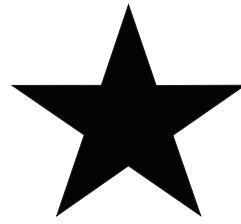
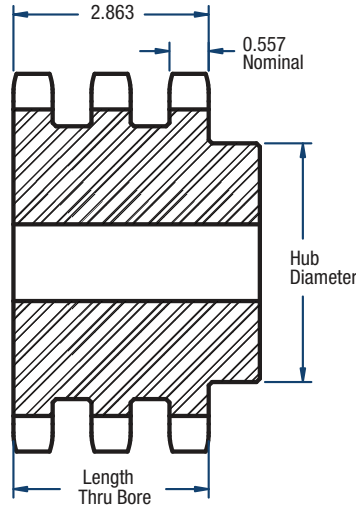


# T80 Sprockets

1" Pitch



BLACKSTAR®



TYPE B

## Triple- Type B

No. of Teeth	Catalog Number	Diameters (in)		Type	Bore (in)		Hub (in)		Approx. Weight (lbs)
		Outside	Pitch		Minimum	Maximum	Diameter	Length Through Bore	
10	T80B10H	3.68	3.236	B	1	1-1/2	2-9/16	3-5/8	5.0
11	T80B11H	4.01	3.550	B	1	1-3/4	2-1/2	3-5/8	5.9
12	T80B12H	4.33	3.864	B	1	1-7/8	2-27/32	3-5/8	7.5
13	T80B13H	4.66	4.179	B	1	2-1/4	3-5/32	3-5/8	9.2
14	T80B14H	4.98	4.494	B	1	2-3/8	3-15/32	3-5/8	11.0
15	T80B15H	5.30	4.810	B	1	2-1/2	3-51/64	3-5/8	13.1
16	T80B16H	5.63	5.126	B	1	2-3/4	4	3-7/8	15.8
17	T80B17H	5.95	5.442	B	1	3	4-27/64	3-7/8	18.6
18	T80B18H	6.27	5.759	B	1	3-1/4	4-47/64	3-7/8	21.2
19	T80B19H	6.59	6.076	B	1	3-5/16	5	3-7/8	23.7
20	T80B20H	6.91	6.392	B	1	3-5/16	5	3-7/8	26.0
21	T80B21H	7.24	6.710	B	1	3-5/16	5	3-7/8	28.4
22	T80B22H	7.56	7.027	B	1	3-5/16	5	3-7/8	31.0
23	T80B23H	7.88	7.344	B	1	3-5/16	5	3-7/8	33.6
24	T80B24H	8.20	7.661	B	1	3-1/2	5-1/4	3-7/8	37.1
25	T80B25H	8.52	7.979	B	1	3-1/2	5-1/4	3-7/8	40.1
26	T80B26H	8.84	8.296	B	1	3-1/2	5-1/4	3-7/8	42.9
30	T80B30H	10.11	9.567	B	1-1/4	3-3/4	5-3/4	4-1/4	54.5
32	T80B32	10.75	10.202	B	1-1/4	3-3/4	5-3/4	4-1/4	66.0
35	T80B35	11.71	11.156	B	1-1/4	3-3/4	5-3/4	4-1/4	79.5
36	T80B36	12.03	11.474	B	1-1/4	3-3/4	5-3/4	4-1/4	83.9

Sprockets with "H" suffix have hardened teeth.

**NOTE:** Maximum bores shown will accommodate a standard keyseat and a setscrew over the keyseat. Slightly larger bores are possible with no keyseat, a shallow keyseat, or a setscrew at an angle to the keyseat.