

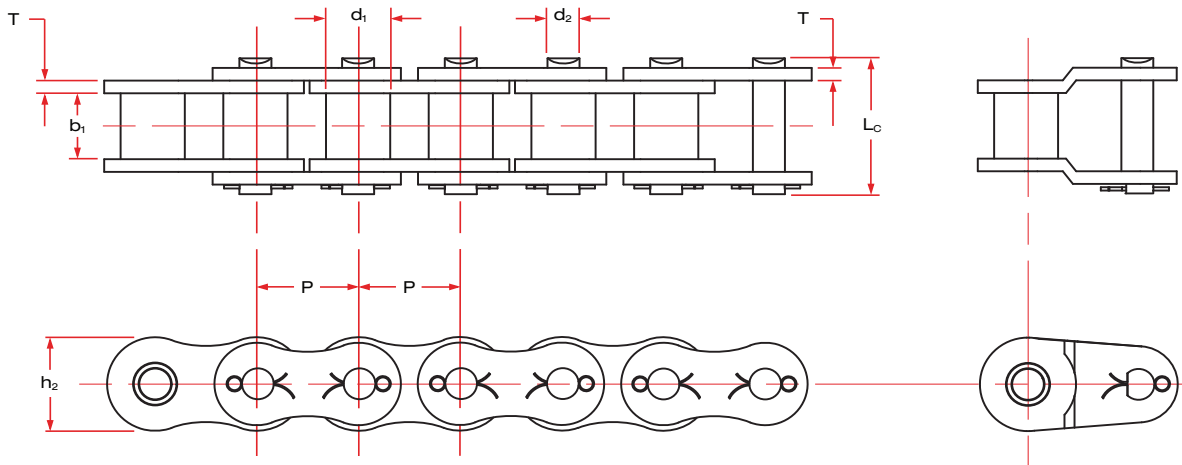


EXTREME DUTY

XD[®]

XD Cottered Single Strand Chain

(All dimensions listed in inches)



Chain Number	Pitch	Roller Diameter	Width Between Inner Plates	Pin Diameter	Pin Length	Inner Plate Height	Plate Thickness	Min. Ultimate Tensile Strength (lbs)	Average Tensile Strength (lbs)	Max Working Load (lbs)	Weight per Foot (lbs/ft)
	P	d ₁ max	b ₁ min	d ₂ max	L _c max	h ₂ max	T max				
XD40 COTT	0.500	0.312	0.312	0.156	0.72	0.47	0.059	3,527	4,290	860	0.4
XD50 COTT	0.625	0.400	0.375	0.200	0.89	0.59	0.079	5,952	7,160	1,389	0.7
XD60 COTT	0.750	0.469	0.500	0.234	1.10	0.71	0.094	8,487	9,920	2,094	1.1
XD80 COTT	1.000	0.625	0.625	0.313	1.49	0.95	0.126	15,872	17,630	3,637	1.9
XD100 COTT	1.250	0.750	0.750	0.375	1.77	1.19	0.157	23,809	26,450	5,511	2.8
XD120 COTT	1.500	0.875	1.007	0.437	2.19	1.43	0.189	33,288	37,030	7,275	4.2
XD140 COTT	1.750	1.000	1.000	0.500	2.40	1.66	0.220	42,988	48,720	9,700	5.2
XD160 COTT	2.000	1.125	1.250	0.563	2.82	1.90	0.252	56,215	60,180	12,125	6.7
XD180 COTT	2.250	1.407	1.407	0.688	3.22	2.14	0.284	70,544	73,630	14,112	9.0
XD200 COTT	2.500	1.562	1.500	0.781	3.50	2.37	0.315	94,794	101,410	15,872	11.1
XD240 COTT	3.000	1.875	1.902	0.937	4.20	2.85	0.374	139,986	149,910	21,825	16.7