

Catalog designation

WA10 DRN63MS4
 SPIROPLAN® gearmotor W..DRN.. (IE3)

Click these icons for further information in Online Support

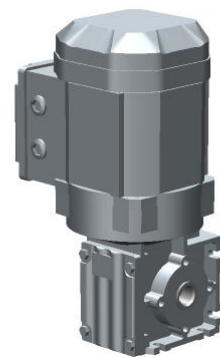


Reference data

Transaction : 425992199
 Item : 100

Product data

Speed [r/min] : 1700 / 166
 Total ratio [i] : 10,25 / finite
 No. of teeth nom./denominator : 41/4
 Ma max [Nm] : 28
 Output torque [Nm] : 6
 Service factor SEW-FB : 4,70
 Mounting position : M4A
 Term.box.pos.[°] / cable entry : 180 (L) / position 2
 Lubricant / -volume [l] : CLP PG-460-NSF-H1 Oil f.Food / 0,16
 Paint coat : Gear unit not painted
 Note: ensure compatibility of top coat with our primer coat



Gear unit : WA10
 Hollow shaft : 16mm
 Design : Hollow shaft
 Safety cover : None
 Documentation no. A : 31978061
 Spare parts list : You can find the SWPL (spare and wearing parts list) under the serial number in the Online Support.

Motor : DRN63MS4
 Motor power [kW] : 0.12
 Motor power [HP] : 0.16
 Motor frequency [Hz] : 60
 Cyclic duration factor S1-S10 : S1
 Motor voltage [V] / conn. type : 230/460 double star/star
 Nominal current [A] : 0,74 / 0,37
 cos phi : 0,58
 Wiring diagram : R76 / 680430706
 Thermal cl.[°C]/Enclosure[IP] : 155(F) / 65
 Service factor motor : 1.15
 International efficiency class : IE3
 Efficiency at 50/75/100% Pn [%] : 57,7 / 63,7 / 66,0
 Design specification : USA (with UR)
 CE mark : No
 EISA identification : Yes, conform to EISA
 K.V.A.code : J
 Selection of NPT adapter : With mounted NPT thread adapter
 Fan guard : Metal fan guard
 CT speed range : 300-1800rpm

Documentation no. A	: 25957066 26857987 30589452
Spare parts list	: You can find the SWPL (spare and wearing parts list) under the serial number in the Online Support.
Nameplate	: German
Nameplate position	: 270°
Nameplate text	: E014919
Opera.instr. A lang./quantity	: German / 0
Parts list/language/quantity	: German / 0
Commodity code	: 85015100
Weight	: 5.83 kg