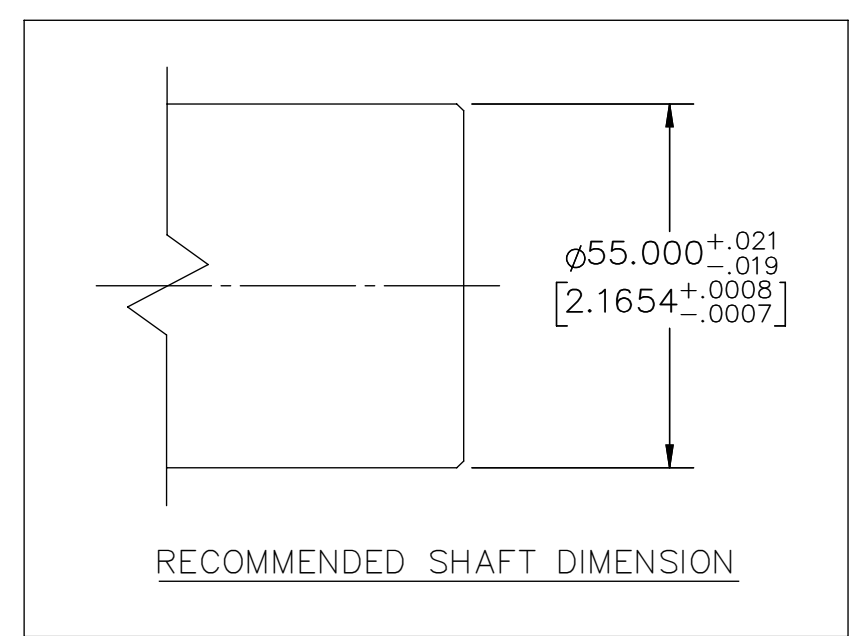


MAX DYNAMIC TORQUE	458.4 NM
AVERAGE TORQUE FOR MAX LIFE	458.4 NM
MAX STATIC TORQUE	916.8 NM
BODY MATERIAL	STEEL
BODY COATING	NICKEL
BEARING LUBRICANT	STANDARD 1
BEARING COATING	HARD CHROME
ROLLER MATERIAL	STEEL
ROLLER COATING	NONE
COUPLING COATING	NICKEL
FASTENER MATERIAL	ZINC PLATED STEEL
RECOMMENDED SCREW TORQUE	25 NM



SEE RACK DRAWING FOR ADDITIONAL DETAIL

GEOMETRIC TOLERANCE VALUES		THIRD ANGLE PROJECTION		SURFACE ROUGHNESS VALUES	
MM	INCH	SURFACE ROUGHNESS VALUES		UNLESS OTHERWISE SPECIFIED	
.013	.0005	6.3	250	1. METRIC TOLERANCES: X ±0.8; .X ±0.5; .XX ±0.13	
.03	.001	3.2	125	INCH TOLERANCES: .XX ±.02; .XXX ±.005	
.05	.002	1.6	63	2. ANGLES ±5°	
.08	.003	0.8	32	3. PRIMARY DIMENSIONS ARE IN MM	
.13	.005	0.4	16	SECONDARY DIMENSIONS ARE IN INCHES	
.20	.008	0.2	8	4. DO NOT SCALE DWG - WORK TO DIMS	
.25	.010			5. PRODUCT MUST CONFORM TO ENGINEERING STANDARD WORK INSTRUCTIONS	
.38	.015				

nexen Nexen Group, Inc.

TITLE GENERAL DIMENSIONS

MODEL RPS40P-B055.00MMP3

DWN	TGH	DATE	9/23/2014	49315	20520	10/1/2014
CHKD	AMT	DATE	9/23/2014	ERO	ECO	DATE
APVD	JWH	DATE	9/23/2014	SCALE: 7:8 <input checked="" type="checkbox"/> SHEET 1 OF 1		

C-966823S

C-966823S