

A full line of lead-free[†] bronze and stainless steel circulators

- Flanged, union and sweat connection models
- Low-watt, energy conserving models
- High starting torque provides dependable start-ups
- B&G Dura-Glide™ Bearing System assures whisper-quiet, maintenance-free operation
- Standard, universal flange-to-flange dimensions

A full line of accessories.

Backed by B&G's nationwide representatives and a great 3-year warranty.

[†] Low Lead Content

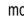



Wet Rotor Circulators

AND ACCESSORIES FOR POTABLE WATER APPLICATIONS

Lead-Free Wet Rotor Circulators for Hot Water Circulation

Description

A residential or light commercial, maintenance-free, in-line, lead-free† bronze, wet rotor circulator for potable water systems and other applications. Flanged, union or sweat models available.  and  listed.

Operating Data

Maximum working pressure150 psi (10 bar)
 Maximum operating temperature
 NBF-25, NBF-33, NBF-36, NBF-45 225°F (107°C)
 All Others 230°F (110°C)
 Shaft Ceramic
 Bearings Double-Sintered Carbon

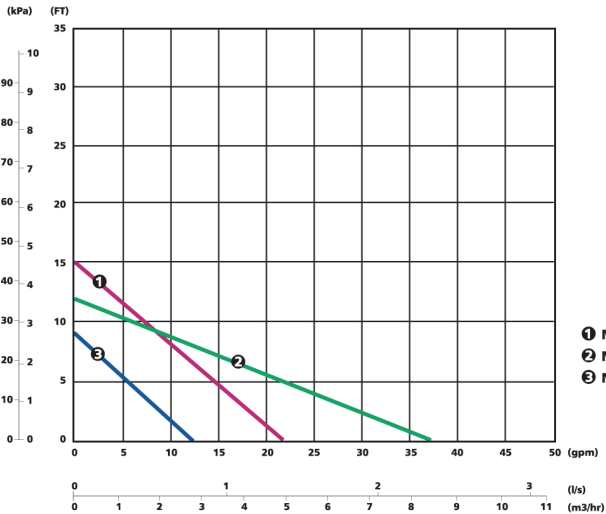
Materials of Construction

Pump Body NBF Lead-Free† Bronze
 SSF Stainless Steel
 Impeller Noryl
 Shaft Ceramic
 Bearings Double-Sintered Carbon

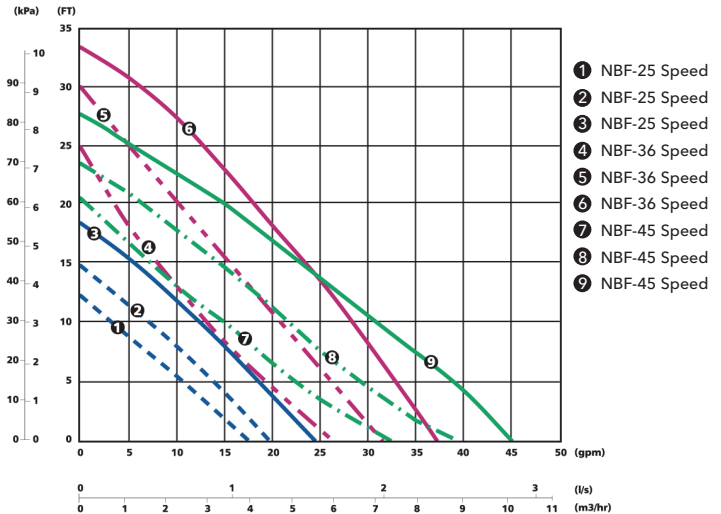
Warranty

Bell & Gossett offers a warranty of three years from date of manufacture or 18 months from date of installation (which ever comes first) against failure as a result of defects in materials and workmanship.

Single Speed—NBF 60 HZ Performance Curve



Three Speed—NBF 60 HZ Performance Curve



Cross Reference

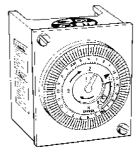
BELL & GOSSETT	GRUNDFOS‡	TACO †
NBF-8S/LW	UM 15-10B5	003B
NBF-9U/LW	UP 15-18SU	006B
NBF-10S/LW	UP 15-18B5	006B
NBF-12U/LW	UP 15-42SU	005B
NBF-12F/LW	UP 15-42SF	005B
NBF-18S	UP 15-42B5	—
NBF-22U	UP 25-64SU	007B
NBF-22	UP 25-64SF	007B
SSF-22	UP25-64SF	007B
NBF-25	UPS15-58	00R-MS
NBF-33	—	0010B
NBF-36	UP26-96BF	0011B
	UP26-99BF	0013B
	UP26-64SF	0014B
NBF-45	UP43-75BF	—

Model Number	Part Number	Connections	Dimensions Inches (mm)			Standard 60 Cycle Motor Characteristics*				Shipping Weight lbs. (Kg)	
			A	B	C	Watts	∅	Volts	F.L. Amps		RPM
NBF-8S/LW	103257LF	1/2" Sweat	5 (127)	5 7/32 (132)	4 7/8 (124)	39	1	115	0.39	2800	9.0 (4.1)
NBF-9U/LW	103258LF	Union**	6 1/8 (156)	5 1/16 (129)	4 7/8 (124)	41		0.40			9.3 (4.2)
NBF-10S/LW	103259LF	1/2" Sweat	5 (127)	5 7/32 (132)	4 7/8 (124)	55		0.46			9.0 (4.1)
NBF-12F/LW	103260LF	Flange 3/4, 1, 1 1/4, 1 1/2	6 3/8 (162)	5 9/16 (141)	4 7/8 (124)	55		0.48			9.5 (4.3)
NBF-12U/LW	103261LF	Union**	6 1/8 (156)	5 1/16 (129)	4 7/8 (124)	55		0.48			9.3 (4.2)
NBF-18S	103316LF	1/2" Sweat	5 (127)	5 7/32 (132)	4 7/8 (124)	90		0.74	3000		9.0 (4.1)
NBF-22	103252LF	Flange 3/4, 1, 1 1/4, 1 1/2	6 3/8 (162)	5 9/16 (141)	4 7/8 (124)	92		0.80			9.5 (4.3)
NBF-22U	103255LF	Union**	6 1/8 (156)	5 1/16 (129)	4 7/8 (124)	92		0.80	2940		9.3 (4.2)
SSF-22	103357LF	Flange 3/4, 1, 1 1/4, 1 1/2	6 3/8 (162)	5 9/16 (141)	4 7/8 (124)	92		0.80			9.5 (4.3)
NBF-33	103351LF	Flange 3/4, 1, 1 1/4, 1 1/2	6 3/8 (162)	6 3/16 (157)	5 1/8 (130)	125		1.10	2950		10.4 (4.7)
NBF-36	103401LF	Flange 3/4, 1, 1 1/4, 1 1/2	6 3/8 (162)	6 7/8 (175)	5 3/4 (146)	270		2.30	3300		13.1 (6.0)
NBF-45	103405LF	Flange 1, 1 1/4, 1 1/2	8 1/2 (216)	7 3/8 (187)	5 3/4 (147)	270					14.5 (6.6)

* 230/60/1 motors available upon request. Impedance protected
 ** Union Connections are available in 3/4" NPT, 1/2" sweat & 3/4" sweat.

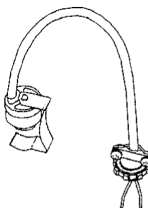
‡ Grundfos is a registered trademark of Grundfos Pumps Corp.
 † Taco is a registered trademark of Taco, Inc.

† Contains less than 0.25% lead content by weight on wetted surfaces.



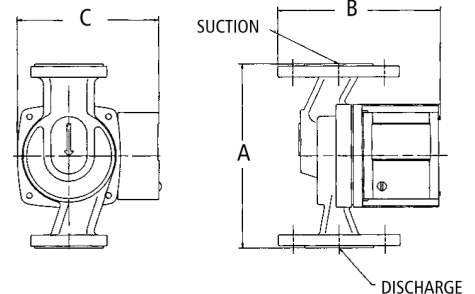
TC-1 Automatic Timer Kit— (Part No. 113210)

To increase the overall efficiency of a hot water recirculation system, the TC-1 timer control kit can be installed for use on any B&G NBF circulator. The TC-1 timer control is programmable to turn the circulator ON and OFF automatically at preset times. This permits the user to have the pump circulate hot water only during those times when high usage can be expected throughout the day.



AQS-1/2 (Part No. 113223) and AQS-3/4 (Part No. 113224)

Aquastat—are designed to thermostatically turn any B&G NBF circulator ON and OFF. The AQ-1/2 or AQ-3/4 will switch the pump OFF at 120°F (48.9°C) and ON at 100°F (37.8°C). The aquastats are available in separate models that will sense the temperature for either 1/2" or 3/4" copper pipe.



Xylem Inc.
 8200 N. Austin Avenue
 Morton Grove, Illinois 60053
 Phone: (847) 966-3700
 Fax: (847) 965-8379
www.xylem.com/brands/bellgossett

Bell & Gossett is a trademark of Xylem Inc. or one of its subsidiaries.
 © 2011 Xylem Inc. A-109H June 2012

