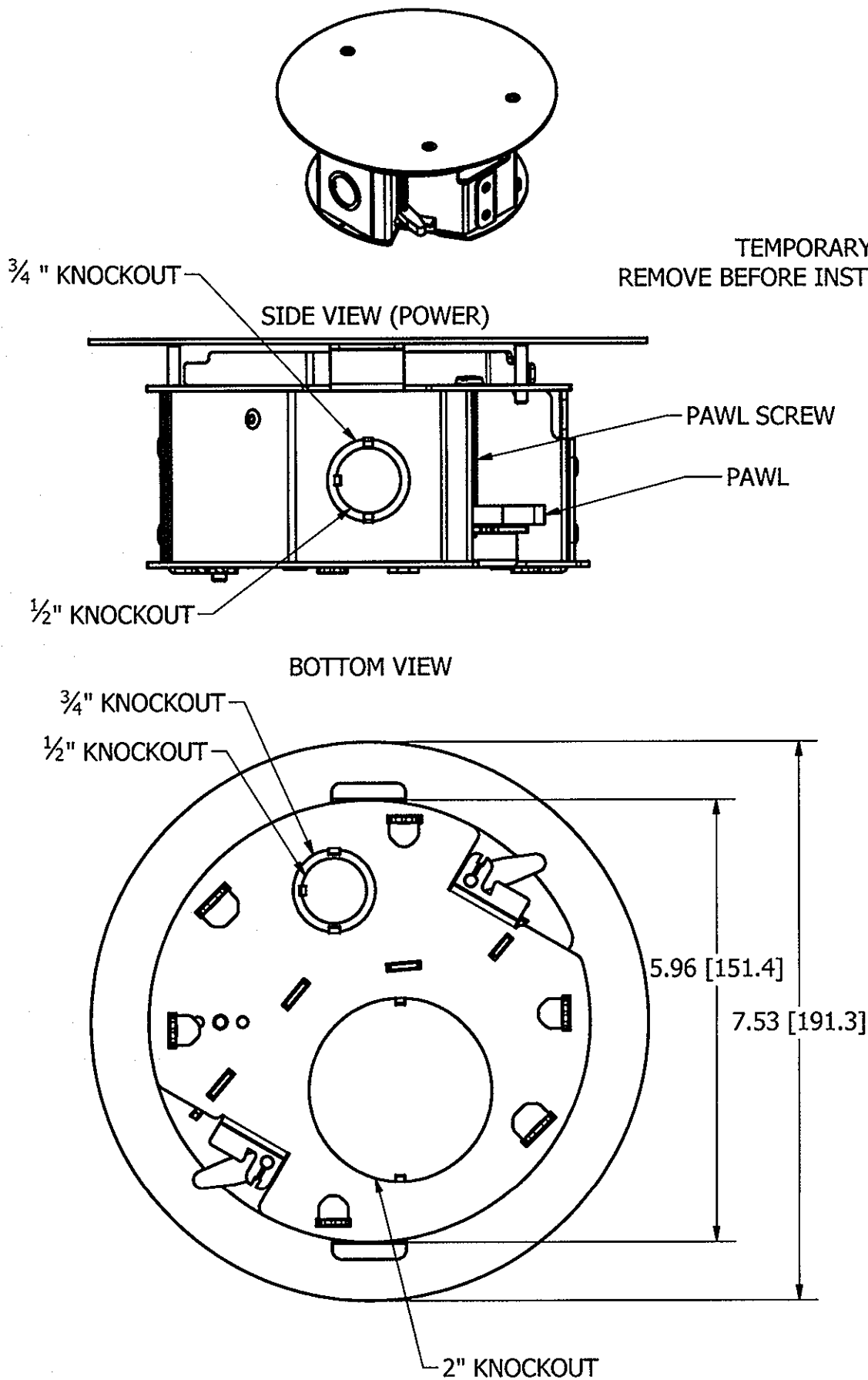


FLOOR BOX WITH TEMPORARY COVER

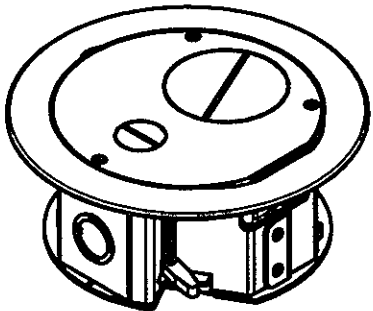
M-12912

3

FLOOR BOX WITH FURNITURE FEED COVER



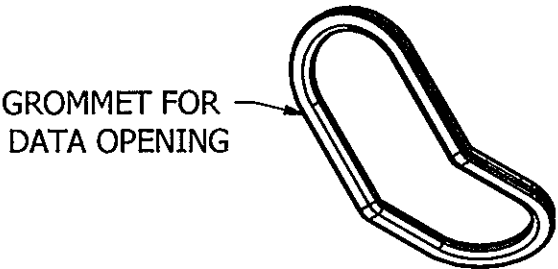
TEMPORARY INSTALLATION COVER
REMOVE BEFORE INSTALLING PROPER COVER



SIDE VIEW (DATA)

REMOVABLE GATE

#8 SCREWS



GROMMET FOR
DATA OPENING

- NOTES:
- 1) ALL DIMENSIONS ARE IN INCHES AND [MILLIMETERS]
 - 2) DESIGNED FOR 1- 2" FLOOR THICKNESS .
 - 3) DESIGNED FOR 6 - 6 1/8" HOLE SIZE.
 - 4) USE WITH HUBBELL AFBS1R6FFCVR SERIES FLOOR BOX COVERS ONLY.

CAT#	DESCRIPTION	FINISH
AFBS1R6BASE	6" FF AFB W TEMPORARY COVER	N/A
AFBS1R6FFALU	6" FF AFB W ALUMINUM COVER	BRUSHED ALUMINUM
AFBS1R6FFBLK	6" FF AFB W BLACK COVER	BLACK POWDER COAT
AFBS1R6FFBRS	6" FF AFB W BRASS COVER	BRASS PLATE
AFBS1R6FFBRZ	6" FF AFB W BRONZE COVER	BRONZE PLATE
AFBS1R6FFNKL	6" FF AFB W NICKEL COVER	NICKEL PLATE
AFBS1R6FFGRY	6" FF AFB W GRAY COVER	GRAY POWDER COAT

LIST OF PARTS

DESCRIPTION	MATERIAL	FINISH
FLOOR BOX	GALV. STEEL G60	-
TEMP INSTALL CVR	GALV. STEEL G60	-
RIVET	STEEL	ZINC
LOW VOLT. DIVIDER	GALV. STEEL G60	-
DATA GATE	GALV. STEEL G60	-
GROMMET	THERMOPLASTIC	-
SCREWS	STEEL	ZINC
GROUND SCREW	STEEL	GREEN COAT
F. FEED COVER	ALUMINUM	SEE TABLE

3	ADDED GRAY POWDER COATED FINISH. PER DCN#21974	EMD	3/18/16
2	CAD MODELS UPDATED, KNOCKOUTS MARKED. PER DCN#21848	EMD	2/25/16
1	RELEASED PER DCN#21144	EMD	7/27/15
SYM	DESCRIPTION	APPRO	DATE

THE DESIGN AND DIMENSIONS OF THE
PRODUCT SHOWN ON THIS DRAWING ARE
SUBJECT TO CHANGE WITHOUT NOTICE

TITLE		RAISED ACCESS FURNITURE FEED FLOOR BOX CUSTOMER DWG	
TOLERANCES UNLESS OTHERWISE SPECIFIED		WIRING DEVICE-KELLEMS HUBBELL INCORPORATED SHELTON, CT	
FRACTIONS	±1/64	DR. BY	EMD
DECIMALS	±.005	TR. BY	SCALE 1/2
ANGLES	±2°	CHK'D BY	DATE 3/18/2015