

**BALDOR® • RELIANCE** 

**Product Information Packet**

**ANFL3504M**

**.5HP, 1725RPM, 1PH, 60HZ, 48YZ, 3421L, TEFC, F1**

| Part Detail |        |             |            |             |                |               |    |
|-------------|--------|-------------|------------|-------------|----------------|---------------|----|
| Revision:   | AA     | Status:     | PRD/A      | Change #:   |                | Proprietary:  | No |
| Type:       | AC     | Elec. Spec: | 34WGW204   | CD Diagram: | CD0008         | Mfg Plant:    |    |
| Mech. Spec: | 34H317 | Layout:     | 34LYH317   | Poles:      | 04             | Created Date: |    |
| Base:       | N      | Eff. Date:  | 07-03-2018 | Leads:      | 6#18,1#16 #4TH |               |    |

| Specs                           |                         |                                |                    |
|---------------------------------|-------------------------|--------------------------------|--------------------|
| Catalog Number:                 | ANFL3504M               | Inverter Code:                 | Not Inverter       |
| Enclosure:                      | TEFC                    | KVA Code:                      | J                  |
| Frame:                          | 48YZ                    | Lifting Lugs:                  | No Lifting Lugs    |
| Frame Material:                 | Steel                   | Locked Bearing Indicator:      | No Locked Bearing  |
| Output @ Frequency:             | .500 HP @ 60 HZ         | Motor Lead Quantity/Wire Size: | 6 @ 18 AWG         |
| Synchronous Speed @ Frequency:  | 1800 RPM @ 60 HZ        | Motor Lead Exit:               | Ko Box             |
| Voltage @ Frequency:            | 230.0 V @ 60 HZ         | Motor Lead Termination:        | Flying Leads       |
|                                 | 115.0 V @ 60 HZ         | Motor Type:                    | 3421L              |
| XP Class and Group:             | None                    | Mounting Arrangement:          | F1                 |
| XP Division:                    | Not Applicable          | Power Factor:                  | 66                 |
| Agency Approvals:               | CSA                     | Product Family:                | General Purpose    |
|                                 | UR                      | Product Type:                  | FARM DUTY          |
| Auxillary Box:                  | No Auxillary Box        | Pulley End Bearing Type:       | Ball               |
| Auxillary Box Lead Termination: | None                    | Pulley Face Code:              | Oil Burner Flange  |
| Base Indicator:                 | No Mounting             | Pulley Shaft Indicator:        | Standard           |
| Bearing Grease Type:            | Polyrex EM (-20F +300F) | Rodent Screen:                 | None               |
| Blower:                         | None                    | Shaft Extension Location:      | Double Shaft       |
| Current @ Voltage:              | 3.700 A @ 230.0 V       | Shaft Ground Indicator:        | No Shaft Grounding |

|                                       |                           |                                    |                         |
|---------------------------------------|---------------------------|------------------------------------|-------------------------|
|                                       | 4.300 A @ 208.0 V         | <b>Shaft Rotation:</b>             | Reversible              |
|                                       | 7.400 A @ 115.0 V         | <b>Shaft Slinger Indicator:</b>    | No Slinger              |
| <b>Design Code:</b>                   | N                         | <b>Speed Code:</b>                 | Single Speed            |
| <b>Drip Cover:</b>                    | No Drip Cover             | <b>Motor Standards:</b>            | NEMA                    |
| <b>Duty Rating:</b>                   | CONT                      | <b>Starting Method:</b>            | Direct on line          |
| <b>Electrically Isolated Bearing:</b> | Not Electrically Isolated | <b>Thermal Device - Bearing:</b>   | None                    |
| <b>Feedback Device:</b>               | NO FEEDBACK               | <b>Thermal Device - Winding:</b>   | None                    |
| <b>Front Face Code:</b>               | Standard                  | <b>Vibration Sensor Indicator:</b> | No Vibration Sensor     |
| <b>Front Shaft Indicator:</b>         | Multiple Flats            | <b>Winding Thermal 1:</b>          | Manual Thermal Overload |
| <b>Heater Indicator:</b>              | No Heater                 | <b>Winding Thermal 1 Location:</b> | KO                      |
| <b>Insulation Class:</b>              | B                         | <b>Winding Thermal 2:</b>          | None                    |

| Nameplate NP1257L |                    |
|-------------------|--------------------|
| CAT.NO.           | ANFL3504M          |
| SPEC.             | 34H317W204         |
| HP                | .5                 |
| VOLTS             | 115/230            |
| AMP               | 7.4/3.7            |
| RPM               | 1725               |
| FRAME             | 48YZ               |
|                   | HZ 60              |
|                   | PH 1               |
| SER.F.            | 1.25               |
|                   | CODE J             |
|                   | DES N              |
|                   | CL B               |
| NEMA-NOM-EFF      | 68                 |
|                   | PF 66              |
| RATING            | 40C AMB-CONT       |
| CC                | USABLE AT 208V 4.3 |
| DE                | 6203               |
|                   | ODE 6203           |
| ENCL              | TEFC               |
|                   | SN                 |
|                   | SFA 8.2/4.1        |

| Parts List    |  |          |
|---------------|--|----------|
| Part Number   | Description                              | Quantity |
| SA010305      | SA 34H317W204                            | 1.000 EA |
| RA006697      | RA 34H317W204                            | 1.000 EA |
| TPMRJ38RBSP   | THERMAL 1PH 0.75 MAN 120C                | 1.000 EA |
| EC1270A02SP   | ELEC CAP, 270-324 MFD, 125V, 1.48D X 3.  | 1.000 EA |
| NS2512A01     | INSULATOR, CONDUIT BOX X                 | 1.000 EA |
| 34GS1013SP    | GASKET, CONDUIT BOX LEXIDE               | 1.000 EA |
| 51XB1016A07   | 10-16 X 7/16 HXWSSLD SERTYB              | 2.000 EA |
| 11XW1032G06   | 10-32 X .38, TAPTITE II, HEX WSHR SLTD U | 1.000 EA |
| HW3001B01     | BRASS CUP WASHER, FOR #10 SCREW          | 1.000 EA |
| RM1014A01SP   | BUTYL RUB.THRM COV. (MENA)               | 1.000 EA |
| HA6001A01     | THERMAL RETAINER (PLATED)                | 1.000 EA |
| 51XB1214A10   | 12-14 X 5/8HX WS SL SR TYBX              | 2.000 EA |
| 51XW0832A07   | 8-32 X .44, TAPTITE II, HEX WSHR SLTD SE | 2.000 EA |
| 34EP3102A01SP | FR ENDPLATE, MACH                        | 1.000 EA |
| NS2500A01     | INSULATOR, AUTO THER PROT                | 1.000 EA |
| 34CB4800SP    | CAPACITOR COVER, STAMPED PRIMED          | 1.000 EA |
| 34GS3000SP    | GASKET, CAPACITOR BOX                    | 1.000 EA |
| 51XB1016A05   | 10-16X5/16HX WA SL SR TYB (F/S)          | 2.000 EA |
| HW5100A03     | WAVY WASHER (W1543-017)                  | 1.000 EA |
| 34EP3500A01   | ENDPLATE, MACH                           | 1.000 EA |
| XY1032A02     | 10-32 HEX NUT DIRECTIONAL SERRATION      | 4.000 EA |
| 34FN3002A01SP | EXTERNAL FAN, PLASTIC, .637/.639 HUB W/  | 1.000 EA |
| 34FH4002A03SP | IEC FH NO GREASER W/.88 DIA SHAFT HOLE,  | 1.000 EA |
| 51XW1032A06   | 10-32 X .38, TAPTITE II, HEX WSHR SLTD S | 3.000 EA |

| Parts List (continued) |  |          |
|------------------------|--|----------|
| Part Number            | Description                              | Quantity |
| 36CB4516               | 36 LIPPED CB LID - GALVANNEAL            | 1.000 EA |
| 37GS1001SP             | GASKET, CONDUIT BOX LID, .06 THICK LEXID | 1.000 EA |
| 51XW0832A07            | 8-32 X .44, TAPTITE II, HEX WSHR SLTD SE | 4.000 EA |
| 34CB3001A39P           | CONDUIT BOX, PRIMER ONLY                 | 1.000 EA |
| MG1025C02              | WILKOFASST SG, 787.105, TAN              | 0.014 GA |
| 85XU0407S04            | 4X1/4 U DRIVE PIN STAINLESS              | 2.000 EA |
| SP5056A24              | 34 TYPE L STATIONARY SWITCH W/ LEADS     | 1.000 EA |
| HA3100A37              | THRUBOLT 10-32 X 8.500                   | 4.000 EA |
| WD4006A01              | WIRE JOINT,T&B RB-4 OR RB-44             | 1.000 EA |
| MN416A01               | TAG-INSTAL-MAINT no wire (1200/bx) 5/18  | 1.000 EA |
| LB1119N                | WARNING LABEL                            | 1.000 EA |
| LB1087                 | LABEL,MANUAL RESET (ROLL LABEL)          | 1.000 EA |
| LC0008                 | CONNECTION LABEL                         | 1.000 EA |
| NP1257L                | ALUM UL CSA CC THERMAL REV MTG           | 1.000 EA |
| 35PA1000               | PKG GRP, PRINT PK1008A06                 | 1.000 EA |
| PK3083T                | STYROFOAM PACKING CRADLE                 | 1.000 EA |
| PK3088                 | MICROFOAM, 8"X"8 PERF. SHEETS 5,400/RL   | 1.000 EA |

**AC Induction Motor Performance Data**  
Record # 6920 - Typical performance - not guaranteed values

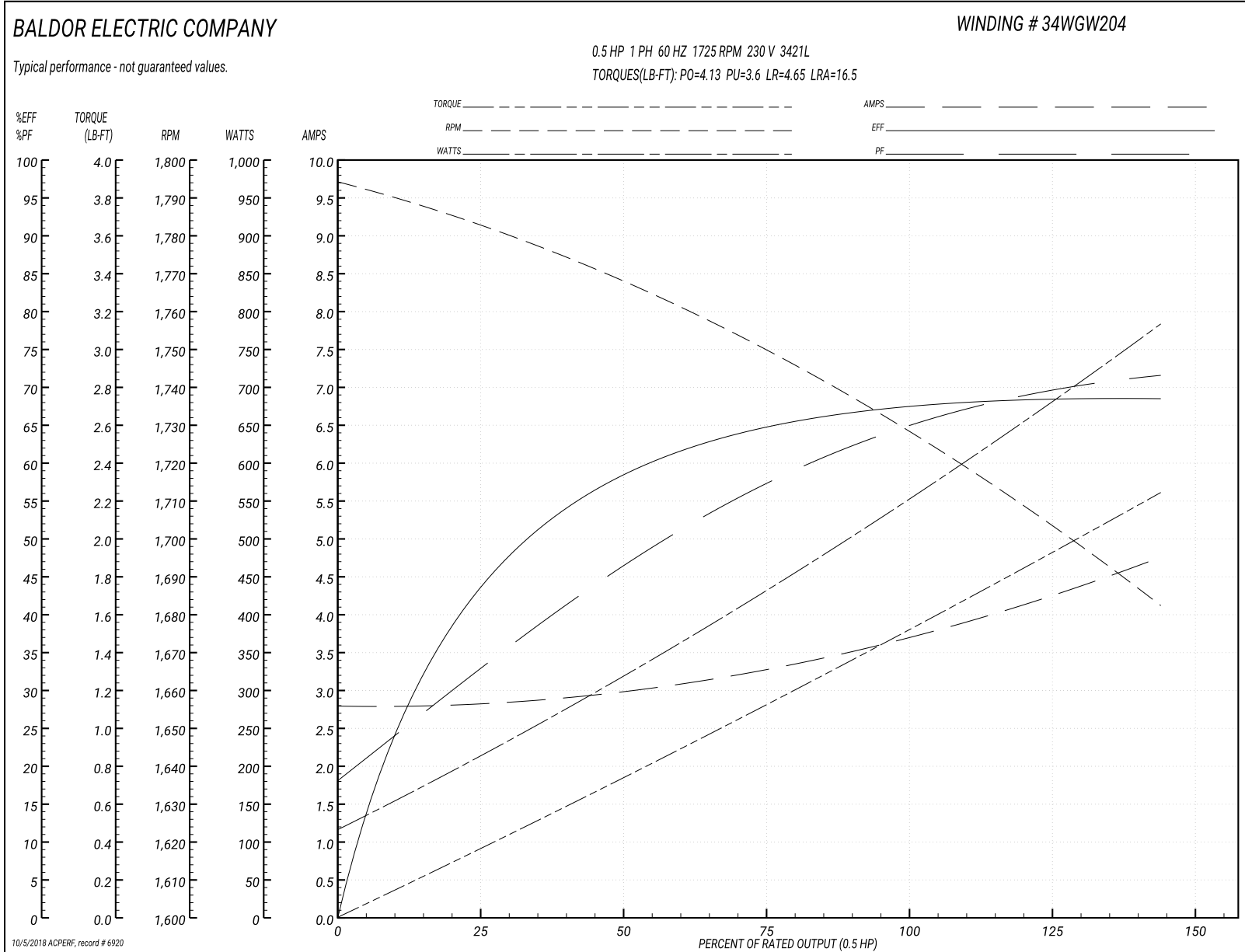
|                          |                    |                        |
|--------------------------|--------------------|------------------------|
| <b>Winding:</b> 34WGW204 | <b>Type:</b> 3421L | <b>Enclosure:</b> TEFC |
|--------------------------|--------------------|------------------------|

| Nameplate Data        |              |              |    | 230 V, 60 Hz:<br>High Voltage Connection |                            |
|-----------------------|--------------|--------------|----|--|----------------------------|
| Rated Output (HP)     | .5           |              |    | Full Load Torque                         | 1.5 LB-FT                  |
| Volts                 | 115/208-230  |              |    | Start Configuration                      | direct on line             |
| Full Load Amps        | 7.4/3.9-3.7  |              |    | Breakdown Torque                         | 4.13 LB-FT                 |
| R.P.M.                | 1725         |              |    | Pull-up Torque                           | 3.6 LB-FT                  |
| Hz                    | 60           | Phase        | 1  | Locked-rotor Torque                      | 4.65 LB-FT                 |
| NEMA Design Code      | N            | KVA Code     | J  | Starting Current                         | 16.5 A                     |
| Service Factor (S.F.) | 1.25         |              |    | No-load Current                          | 2.8 A                      |
| NEMA Nom. Eff.        | 68           | Power Factor | 66 | Line-line Res. @ 25°C                    | 4.44 Ω A Ph<br>3.19 Ω B Ph |
| Rating - Duty         | 40C AMB-CONT |              |    | Temp. Rise @ Rated Load                  | 63°C                       |
| S.F. Amps             | 8.2/4.1-3.9  |              |    | Temp. Rise @ S.F. Load                   | 77°C                       |

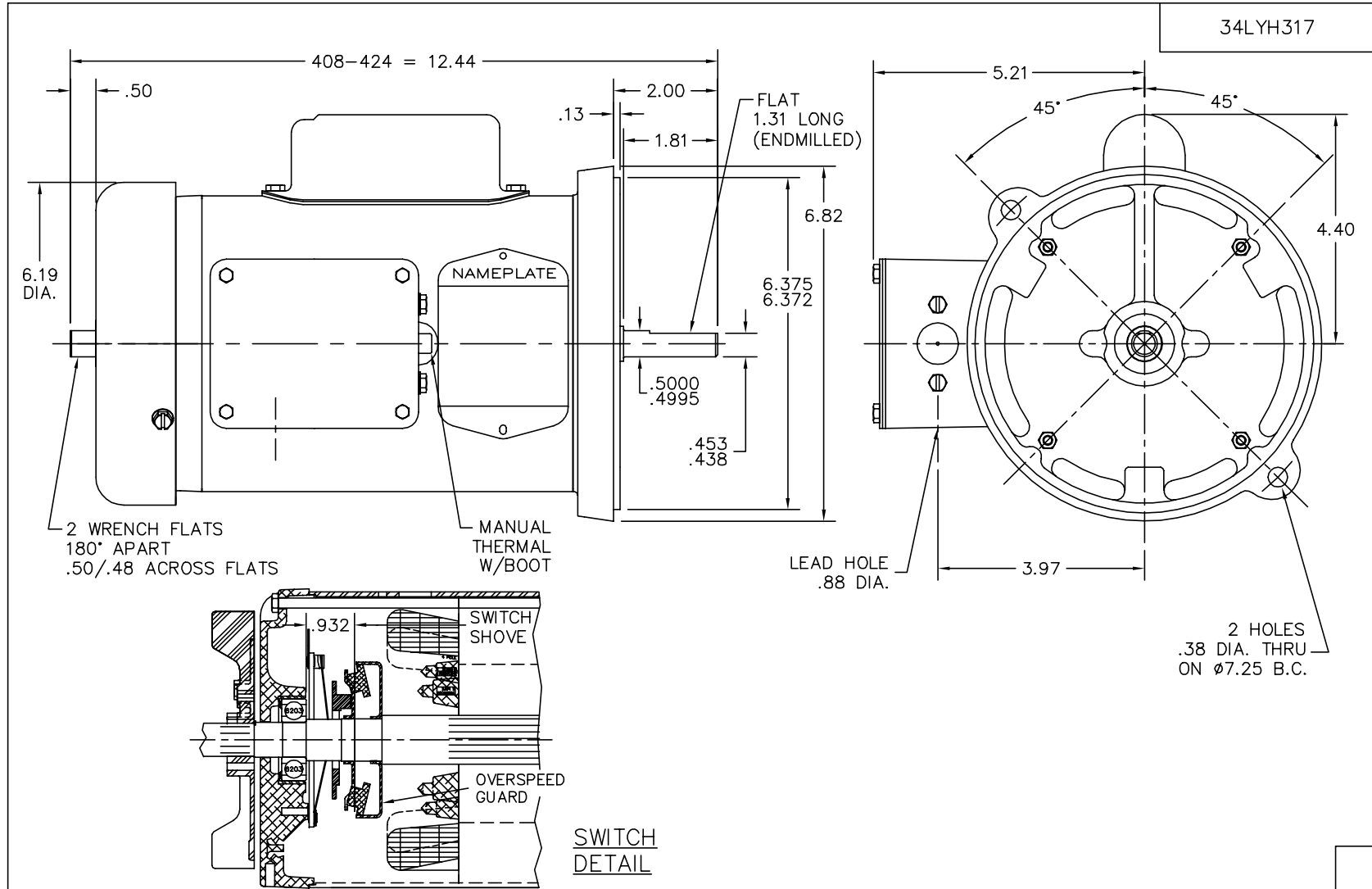
Load Characteristics 230 V, 60 Hz, 0.5 HP

| % of Rated Load | 25   | 50   | 75   | 100  | 125  | 150  | S.F. |
|-----------------|------|------|------|------|------|------|------|
| Power Factor    | 32   | 46   | 59   | 66   | 72   | 80   | 72   |
| Efficiency      | 42   | 58   | 65   | 68   | 69   | 68   | 69   |
| Speed           | 1783 | 1765 | 1750 | 1730 | 1710 | 1680 | 1710 |
| Line amperes    | 2.8  | 3    | 3.3  | 3.7  | 4.1  | 4.8  | 4.1  |

Performance Graph at 230V, 60Hz, 0.5HP Typical performance - Not guaranteed values







CUSTOMER IS RESPONSIBLE FOR DETERMINING THAT MOTOR PERFORMANCE IS SUITABLE IN THE APPLICATION.

REV. DESC: SH WAS 34SH5987,SB WAS 34SB1224,DEL "B" & "C" STK

REV. LTR: C BY: MH REVISED: 14:38:00 09/23/2004 TDR: 344120

FILE: AAA00049720 REF: 34LYH317

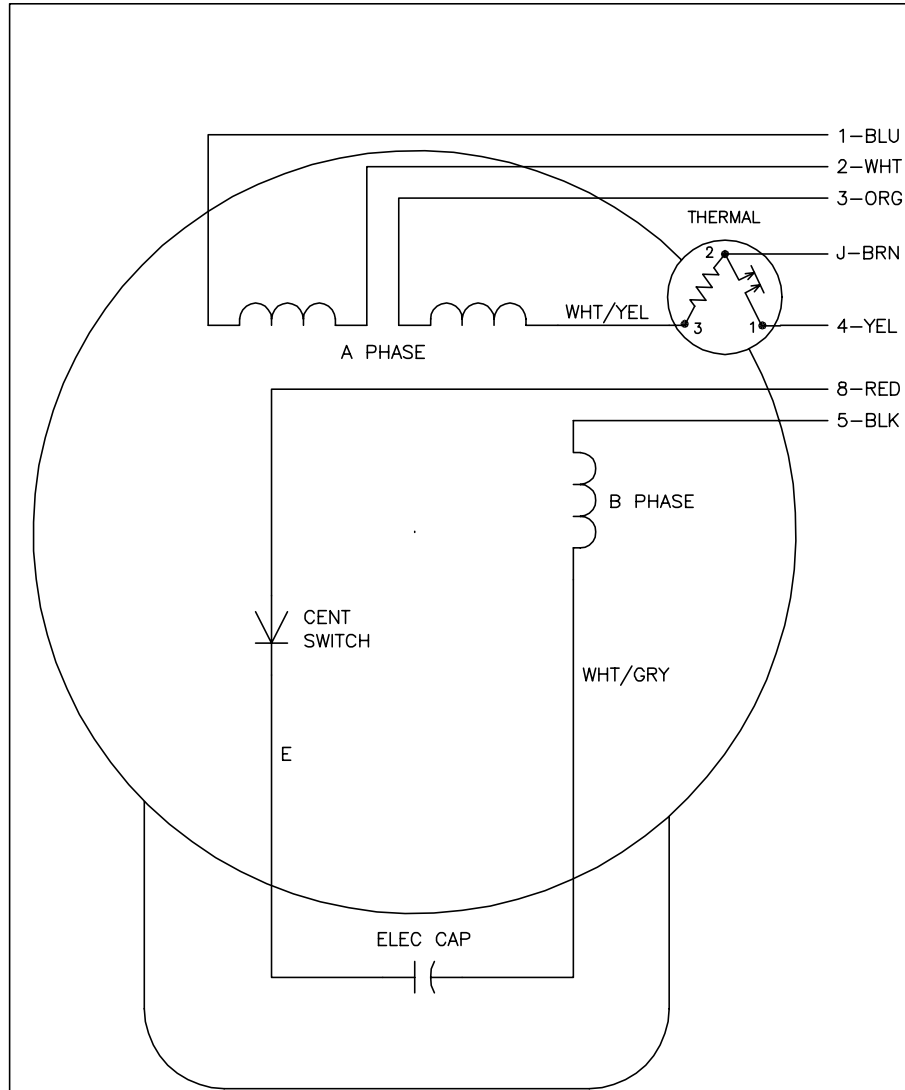
MTL: -

**BALDOR ELECTRIC Co.**

VERT 34L 48YZ TEFC DBL SHAFT W/MTO IN KOBX & OVERSPEED GUARD

34LYH317

CD0008



|          | LINE A | LINE B | JOIN  | JOIN  |
|----------|--------|--------|-------|-------|
| HIGH STD | 1      | 4      | 2,3,8 | J,5   |
| HIGH OPP | 1      | 4      | 2,3,5 | J,8   |
| LOW STD  | 1,3,8  | 4      | -     | 2,J,5 |
| LOW OPP  | 1,3,5  | 4      | -     | 2,J,8 |

NOTES:

1. STANDARD ROTATION IS CCW FACING END OPPOSITE SHAFT EXTENSION.
2. MULTIPLE CAPACITORS ARE CONNECTED IN PARALLEL UNLESS OTHERWISE SPECIFIED.
3. LEAD COLORS ARE OPTIONAL. LEADS MUST ALWAYS BE NUMBERED AS SHOWN.

|  |                      |                              |
|--|----------------------|------------------------------|
| REV. DESC: REMOVE 2-TERMINAL THERMAL DETAIL, SEE CD0008A02 |                      |                              |
| REV. LTR: F  | VERSION: 01          | TDR: 000000360649            |
| 80000  | FILE: \AAA\00007\408 | REVISED: 10:56:54 04/18/2005 |
|  | MTL: -               | BY: ENJOEPO                  |

**BALDOR ELECTRIC Co.**

TYPE L, DV, REV, THERMAL, 7 LEADS

CD0008