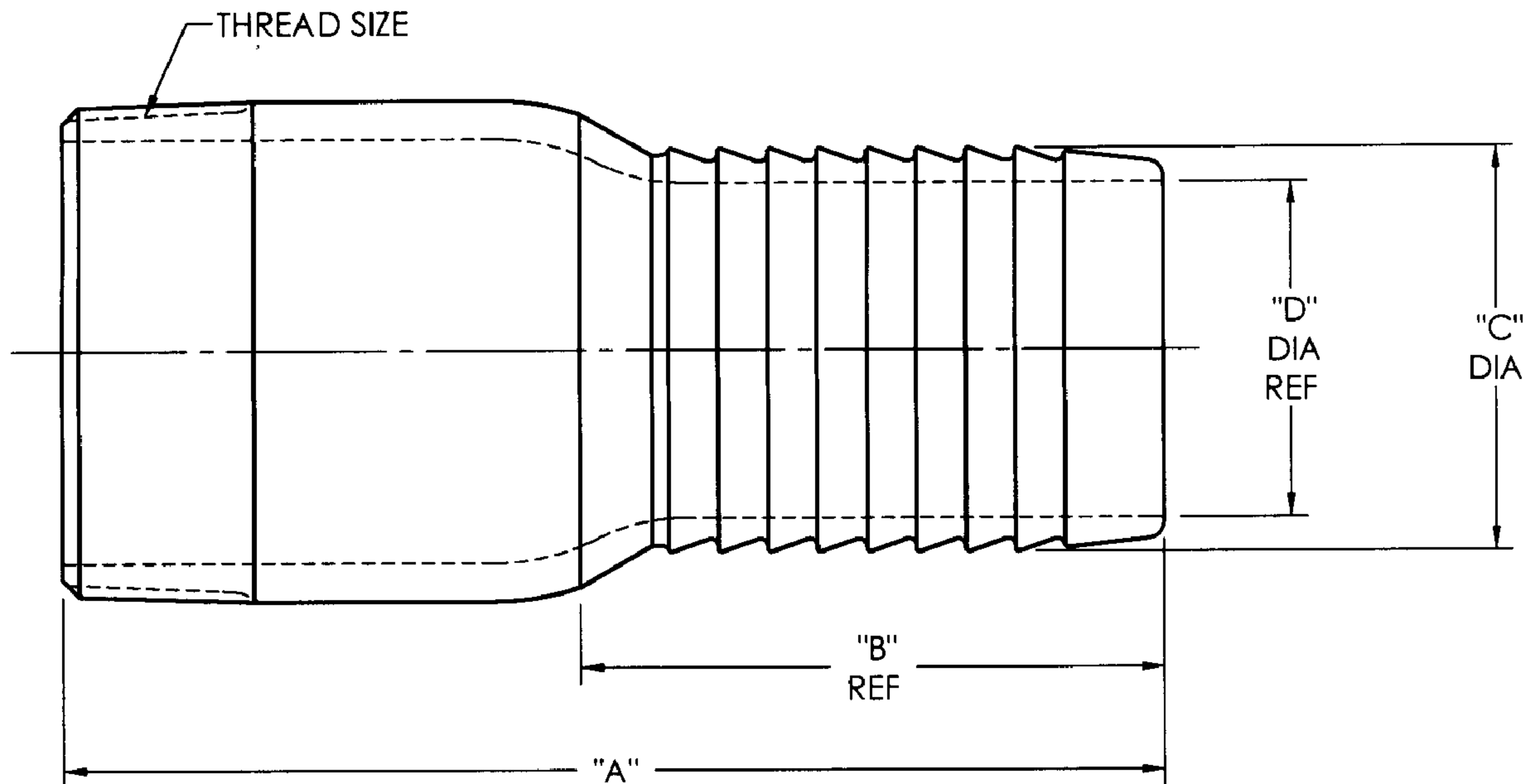


# ASTXX

6/11/09

CUSTOMER DWG

SIZE	PART NO.	A	B	C	D	THREAD SIZE	MATERIAL
1/2	AST1	3-1/8	1-5/8	.531	3/8	1/2 - 14 NPT	13/16 BARSTOCK
3/4	AST5	3-1/8	1-5/8	.781	9/16	3/4 - 14 NPT	1 BARSTOCK
1	AST10	3-3/8	1-5/8	1-1/32	13/16	1 - 11.1/2 NPT	1-1/4 BARSTOCK
1-1/4	AST15	3-15/16	2-1/32	1-9/32	1-1/32	1.1/4 - 11.1/2 NPT	1-1/4 SCHD. 40
1-1/2	AST20	4-5/32	2-7/32	1-17/32	1-9/32	1.1/2 - 11.1/2 NPT	1-1/2 SCHD. 40
2	AST25	4-11/16	2-13/32	2-1/32	1-3/4	2 - 11.1/2 NPT	2 SCHD. 40
2-1/2	AST30	5-9/16	2-25/32	2-17/32	2-5/32	2.1/2 - 8 NPT	2-1/2 SCHD. 40
3	AST35	6	3-3/16	3-1/32	2-11/16	3 - 8 NPT	3 SCHD. 40
4	AST40	7-5/16	4-1/32	4-1/32	3-21/32	4 - 8 NPT	4 SCHD. 40
5	AST50	9	5-5/32	5-1/32	4-5/8	5 - 8 NPT	5 SCHD. 40
6	AST60	11	6-1/4	6-1/16	5-9/16	6 - 8 NPT	6 SCHD. 40
8	AST80	12-1/8	7-5/16	8-1/16	7-9/16	8 - 8 NPT	8 SCHD. 40
10	AST100	13-1/8	8-1/2	10-1/16	9-9/16	10 - 8 NPT	10 SCHD. 40
12	AST120	15	9-7/8	12-1/16	11-15/32	12 - 8 NPT	12 SCHD. 40



CUSTOMER DWG



### AGREEMENT TO MAINTAIN CONFIDENTIALITY

This drawing is owned by Dixon Valve & Coupling Co. and shall be returned upon demand. It is loaned on condition that it shall not be copied or reproduced or submitted to others without the owners consent. In accepting it subject to this condition the recipient further agrees that this drawing or any design detail or concept disclosed herein shall not be used in any way detrimental to or in competition with the owner. If the recipient does not agree to the terms of this agreement they shall return this drawing immediately.

**DIXON VALVE & COUPLING CO.**  
U. S. A.

TITLE

DIMENSIONS FOR  
KING COMBINATION NIPPLES

DRWN BY:

NPC  
08/13/08

CHECKED BY:

*Jay G*  
8/22/08

APPROVAL: *JJB*

8/22/08

MATL:

ALUMINUM

# ASTXX