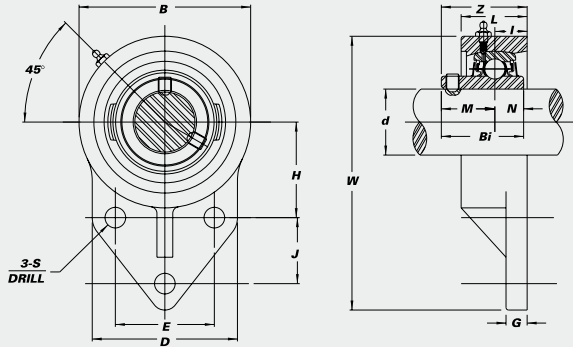


# Thermoplastic 3-Bolt Flanges

With optional bearing inserts:  
**Stainless Steel-SUCTFB**  
**Hard Chrome Coated-CUCTFB**  
**Black Oxide-BUCTFB**



- End Caps Available
- Overview of corrosion resistant products – pg. 52



CORROSION RESISTANT

Unit No.	Shaft Dia.		Dimensions (in.) (mm)											Bolt Used (in.)	Bearing No.	Housing No.	Weight (lbs.)						
	d (in.)	d (mm)	W	B	D	L	S	G	H	J	E	I	Z					Bi	N	M			
<b>SUCTFB with Stainless Steel Bearing Inserts</b>																							
SUCTFB 201-8	1/2		4 1/4	2 1/2	2 7/16	1 1/32	25/64	7/16	1 11/16	7/8	1 1/2	19/32	1 5/16	1.2205	0.5000	0.7205	5/16	SUC 201-8	TFB 204	.6			
202-10	5/8		108	64	62	26	9.9	11	43.3	22.2	38.1	15	33.3	31.0	12.7	18.3		SUC 202-10					
204-12	3/4																	SUC 204-12					
204	20																	SUC 204					
SUCTFB 205-14	7/8		4 3/4	2 3/4	2 1/2	1 11/32	25/64	7/16	1 13/16	1 1/8	1 5/8	27/32	1 41/64	1.3386	0.5630	0.7756	5/16	SUC 205-14	TFB 205	.7			
205	25		121	70	64	34	9.9	11	46.0	28.6	41.3	21	41.6	34.0	14.3	19.7		SUC 205					
205-16	1																	SUC 205-16					
SUCTFB 206-18	1 1/8		5 3/8	3 1/4	3	1 1/4	25/64	17/32	2 1/16	1 1/4	1 7/8	3/4	1 41/64	1.5000	0.6260	0.8740	5/16	SUC 206-18	TFB 206	1.1			
206	30		137	83	76	32	9.9	13	52.4	31.8	47.6	19	41.6	38.1	15.9	22.2		SUC 206					
206-19	1 3/16																	SUC 206-19					
206-20	1 1/4 S																	SUC 206-20					
SUCTFB 207-20	1 1/4		6 1/8	3 3/4	3 1/2	1 7/16	33/64	41/64	2 3/8	1 1/4	2	53/64	1 55/64	1.6890	0.6890	1.0000	7/16	SUC 207-20	TFB 207	1.5			
207-21	1 5/16		156	95	89	37	13.1	16	60.3	31.8	50.8	21	47.0	42.9	17.5	25.4		SUC 207-21					
207-22	1 3/8																	SUC 207-22					
207	35																	SUC 207					
207-23	1 7/16																	SUC 207-23					
<b>CUCTFB with Hard Chrome Coated Bearing Inserts</b>																							
CUCTFB 204-12	3/4		4 1/4	2 1/2	2 7/16	1 1/32	25/64	7/16	1 11/16	7/8	1 1/2	19/32	1 5/16	1.2205	0.5000	0.7205	5/16	CUC 204-12	TFB 204	.6			
204	20		108	64	62	26	9.9	11	43.3	22.2	38.1	15	33.3	31.0	12.7	18.3		CUC 204					
CUCTFB 205-15	7/8		4 3/4	2 3/4	2 1/2	1 11/32	25/64	7/16	1 13/16	1 1/8	1 5/8	27/32	1 41/64	1.3386	0.5630	0.7756		5/16			CUC 205-14	TFB 205	.7
205	25		121	70	64	34	9.9	11	46.0	28.6	41.3	21	41.6	34.0	14.3	19.7					CUC 205		
205-16	1																CUC 205-16						
CUCTFB 206-18	1 1/8		5 3/8	3 1/4	3	1 1/4	25/64	17/32	2 1/16	1 1/4	1 7/8	3/4	1 41/64	1.5000	0.6260	0.8740	5/16	CUC 206-18	TFB 206	1.1			
206	30		137	83	76	32	9.9	13	52.4	31.8	47.6	19	41.6	38.1	15.9	22.2		CUC 206					
206-19	1 3/16																	CUC 206-19					
206-20	1 1/4 S																	CUC 206-20					
CUCTFB 207-20	1 1/4		6 1/8	3 3/4	3 1/2	1 7/16	33/64	41/64	2 3/8	1 1/4	2	53/64	1 55/64	1.6890	0.6890	1.0000	7/16	CUC 207-20	TFB 207	1.5			
207-22	1 3/8		156	95	89	37	13.1	16	60.3	31.8	50.8	21	47.0	42.9	17.5	25.4		CUC 207-22					
207	35																	CUC 207					
207-23	1 7/16																	CUC 207-23					
<b>BUCTFB with Black Oxide Bearing Inserts</b>																							
BUCTFB 201-8	1/2		4 1/4	2 1/2	2 7/16	1 1/32	25/64	7/16	1 11/16	7/8	1 1/2	19/32	1 5/16	1.2205	0.5000	0.7205	5/16	BUC 201-8	TFB 204	.6			
202-10	5/8		108	64	62	26	9.9	11	43.3	22.2	38.1	15	33.3	31.0	12.7	18.3		BUC 202-10					
204-12	3/4																	BUC 204-12					
204	20																	BUC 204					
BUCTFB 205-14	7/8		4 3/4	2 3/4	2 1/2	1 11/32	25/64	7/16	1 13/16	1 1/8	1 5/8	27/32	1 41/64	1.3386	0.5630	0.7756	5/16	BUC 205-14	TFB 205	.7			
205	25		121	70	64	34	9.9	11	46.0	28.6	41.3	21	41.6	34.0	14.3	19.7		BUC 205					
205-16	1																	BUC 205-16					
BUCTFB 206-18	1 1/8		5 3/8	3 1/4	3	1 1/4	25/64	17/32	2 1/16	1 1/4	1 7/8	3/4	1 41/64	1.5000	0.6260	0.8740	5/16	BUC 206-18	TFB 206	1.1			
206	30		137	83	76	32	9.9	13	52.4	31.8	47.6	19	41.6	38.1	15.9	22.2		BUC 206					
206-19	1 3/16																	BUC 206-19					
206-20	1 1/4 S																	BUC 206-20					
BUCTFB 207-20	1 1/4		6 1/8	3 3/4	3 1/2	1 7/16	33/64	41/64	2 3/8	1 1/4	2	53/64	1 55/64	1.6890	0.6890	1.0000	7/16	BUC 207-20	TFB 207	1.5			
207-21	1 5/16		156	95	89	37	13.1	16	60.3	31.8	50.8	21	47.0	42.9	17.5	25.4		BUC 207-21					
207-22	1 3/8																	BUC 207-22					
207	35																	BUC 207					
207-23	1 7/16																	BUC 207-23					