

Pneumatically Actuated 3-Piece Stainless Ball Valves

Valves



Features:

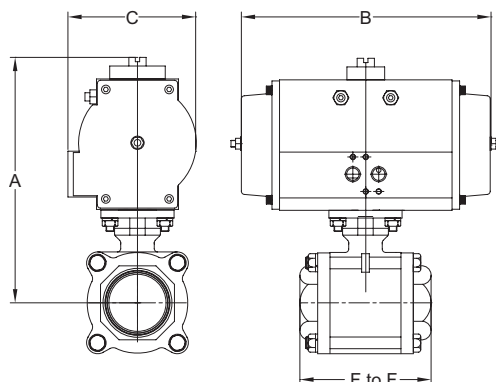
3-Piece Stainless Ball Valve

- 15% glass reinforced RTFE seats
- blow-out proof stainless steel stem
- live-loaded stem packing
- ISO 5211 mounting pad
- swing out in-line easy maintenance
- pressure rating: 1/2" - 2" **1000 PSI WOG**, 3" **800 PSI WOG**
- temperature range: 1/2" to 2" **-40°F to 350°F (-40°C to 177°C)**, 3" to 4": **-40°F to 325°F (-40°C to 163°C)**

Rack and Pinion Actuator

- hard anodized aluminum body
- nickel plated anti-blowout pinion
- Buna-N O-rings
- NAMUR mounting
- bi-directional stops for $\pm 5^\circ$ travel adjustment
- 80 PSI plant air required
- visual position indication
- maximum operating pressure: **120 PSI**
- temperature range: **-40°F to 200°F (-40°C to 93°C)**
- tested to one million cycles

Spring Return (normally closed)

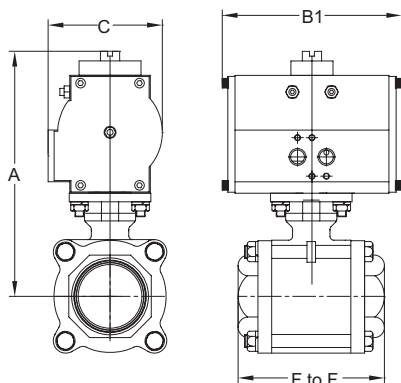


Dimensions are approximate. Engineering dimensions are available upon request. Specifications are subject to change without notice.

Size	Dimensions				316 Stainless Steel	
	F to F	A	B	C	Part #	Price/E
1/2"	2.6"	7.0"	7.7"	3.2"	BV2IG-05011-BBC ¹	\$760.33
3/4"	3.0"	7.2"	7.7"	3.2"	BV2IG-07511-BBC ¹	767.28
1"	3.4"	6.1"	7.7"	3.2"	BV2IG-10011-BBC	813.72
1 1/4"	4.0"	6.3"	7.7"	3.2"	BV2IG-12511-BBC	888.58
1 1/2"	4.7"	7.7"	8.1"	3.7"	BV2IG-15011-BBC	1031.95
2"	5.2"	8.8"	8.1"	3.7"	BV2IG-20011-BBC	1497.59
3"	7.2"	10.2"	9.8"	4.7"	BV2IG-30011-BBC	2938.28
4"	8.9"	12.4"	10.9"	5.5"	BV2IG-40011-BBC	5514.16

¹ bracket and coupler required for 1/2" and 3/4" spring return actuator

Double Acting



Dimensions are approximate. Engineering dimensions are available upon request. Specifications are subject to change without notice.

Size	Dimensions				316 Stainless Steel	
	F to F	A	B1	C	Part #	Price/E
1/2"	2.6"	5.0"	4.7"	2.4"	BV2IG-05011-BCC	\$483.99
3/4"	3.0"	5.2"	4.7"	2.4"	BV2IG-07511-BCC	519.18
1"	3.4"	6.1"	5.7"	3.2"	BV2IG-10011-BCC	672.28
1 1/4"	4.0"	6.3"	5.7"	3.2"	BV2IG-12511-BCC	760.56
1 1/2"	4.7"	7.7"	5.9"	3.7"	BV2IG-15011-BCC	1031.95
2"	5.2"	8.0"	5.9"	3.7"	BV2IG-20011-BCC	1118.24
3"	7.2"	10.2"	7.2"	4.7"	BV2IG-30011-BCC	2380.69
4"	8.9"	13.8"	16.3"	7.2"	BV2IG-40011-BCC	3974.27

A wide variety of switches, solenoids, positioners, etc., are available. Contact Dixon® at 800.789.1718 or visit dixonvalve.com for details.

Caution !

Even though there are torque safety factors built into our automated ball valve packages, actual service conditions must also be considered when selecting the proper product for the appropriate application.

For example: Severe service conditions such as dirty water, dirty air, all slurries, raw sewage water, oils, and other viscous fluids can have a dramatic affect in raising the torque requirements of ball valves as much as 75% and therefore larger actuators may be required. Please consult Dixon® when dealing with these types of applications.

