

**BALDOR® • RELIANCE** 

**Product Information Packet**

**CD2007R-2**

**7.50HP,1750RPM,DC,1812ATCZ,SPG,**

| Part Detail |    |             |       |                |    |               |            |
|-------------|----|-------------|-------|----------------|----|---------------|------------|
| Revision:   | F  | Status:     | PRD/A | Change #:      |    | Proprietary:  | No         |
| Type:       | DC | Prod. Type: |       | Elec. Spec:    |    | CD Diagram:   |            |
| Enclosure:  |    | Mfg Plant:  |       | Mech. Spec:    |    | Layout:       | 609980-023 |
| Frame:      |    | Mounting:   |       | Poles:         | 00 | Created Date: | 02-17-2014 |
| Base:       |    | Rotation:   | R     | Insulation:    |    | Eff. Date:    | 10-28-2016 |
| Field Type: |    | Literature: |       | Elec. Diagram: |    | Replaced By:  |            |

| Specs                     |                         |  |  |
|---------------------------|-------------------------|--|--|
| Frame:                    | C1812ATCZ               |  |  |
| Frame Material:           | Exposed Laminations     |  |  |
| Agency Approvals:         | CCSA US                 |  |  |
| Base Indicator:           | Rigid                   |  |  |
| Bearing Grease Type:      | Polyrex EM (-20F +300F) |  |  |
| Drip Cover:               | No Drip Cover           |  |  |
| Feedback Device:          | NO FEEDBACK             |  |  |
| Frame Prefix:             | C                       |  |  |
| Heater Indicator:         | No Heater               |  |  |
| Insulation Class:         | F                       |  |  |
| Lifting Lugs:             | Standard Lifting Lugs   |  |  |
| Shaft Extension Location: | Pulley End              |  |  |
| Shaft Ground Indicator:   | No Shaft Grounding      |  |  |
| Shaft Slinger Indicator:  | No Slinger              |  |  |
| Motor Standards:          | NEMA                    |  |  |



| <b>Parts List</b>  |  |                 |
|--------------------|--|-----------------|
| <b>Part Number</b> | <b>Description</b>                       | <b>Quantity</b> |
| SA281178           | SA T18R1011                              | 1.000 EA        |
| AA015346           | AA T18R1011                              | 1.000 EA        |
| 000613006HP        | NAMEPLATE - RPM III D-C MOTOR W/CSA LOGO | 1.000 EA        |
| 000692000FP        | NP, WARNING LIFT INSTRUCTIONS            | 1.000 EA        |
| 000692000FS        | WARNING LABEL                            | 1.000 EA        |
| 036170004EA        | ROUND HEAD DRIVE SCREW                   | 6.000 EA        |
| 406770001          | C/D TAG (STAB SHUNT)                     | 1.000 EA        |
| 609831002A         | ENLAM                                    | 2.000 EA        |
| 609844001A         | BALANCE RING                             | 1.000 EA        |
| 705009002AA        | FAN ALUMINUM                             | 1.000 EA        |
| 036170006EA        | USE 33775-6EA PER DWG                    | 2.000 EA        |
| 609844004A         | LEAD SHELF                               | 1.000 EA        |
| 609848010A         | INSUL, LEAD SHELF                        | 1.000 EA        |
| 046001026A         | THERMOSTAT                               | 1.000 EA        |
| 418007020AC        | DC FRAME INSULATION C1812/DC1811/GK1106  | 1.000 EA        |
| 034180008EA        | KEY 5/16X5/16X1 L                        | 1.000 EA        |
| 036100012HA        | HSHCS M6 12MM UNPLATED                   | 2.000 EA        |
| 036610008AB        | METRIC LCKW M6 PLTD-G508                 | 2.000 EA        |
| 417735001A         | SLEEVE                                   | 1.000 EA        |
| 036000060JB        | M8-1.25 X 60MM HXHDCSCR                  | 2.000 EA        |
| 400638001E         | WWSHR                                    | 1.000 EA        |
| 801759054A         | BRKT,DE,C180                             | 1.000 EA        |
| 036000012JB        | M8-1.25 X 12MM HXHDC                     | 1.000 EA        |
| 036000012JB        | M8-1.25 X 12MM HXHDC                     | 4.000 EA        |

| Parts List (continued) |                                   |          |
|------------------------|-----------------------------------|----------|
| Part Number            | Description                       | Quantity |
| 417733001A             | GSK C/ BOX BASE                   | 1.000 EA |
| 418018074A             | GROUND LABEL G100 METRIC 160 D.C. | 1.000 EA |
| 034693001AB            | PPLG - G508- use 034692001AB      | 1.000 EA |
| 034693001AB            | PPLG - G508- use 034692001AB      | 1.000 EA |
| 035000001A             | ALFTG 1/8" 1610-BL                | 1.000 EA |
| 035000001A             | ALFTG 1/8" 1610-BL                | 1.000 EA |
| 036000050HB            | MHHCS M6X50MM PLATED              | 2.000 EA |
| 036500009AB            | METRIC NUTM8-1.25PLTD-360         | 4.000 EA |
| 036500009AB            | METRIC NUTM8-1.25PLTD-360         | 4.000 EA |
| 048977006B             | GRFTG - XP                        | 1.000 EA |
| 048977006B             | GRFTG - XP                        | 1.000 EA |
| 418150003A             | GREASE FITTING CAP                | 2.000 EA |
| 609830005L             | TBOLT METRIC RP609830-            | 4.000 EA |
| 801758052A             | BRKT,ODE,C180                     | 1.000 EA |
| 036000025HB            | HHCS M6-1.0X25L PLTD.             | 4.000 EA |
| 036601008AB            | M6 FLAT WASHER                    | 4.000 EA |
| 036610008AB            | METRIC LCKW M6 PLTD-G508          | 4.000 EA |
| 419904-51AD            | BRUSH C                           | 2.000 EA |
| 032018004CK            | HHCS 3/8-16X1/2L PLATED           | 4.000 EA |
| 036000012HB            | HHCS M6X12MM LONG PLATED          | 2.000 EA |
| 036620009AB            | M8 EXTERNAL LK WASHER             | 1.000 EA |
| 065530000B             | GASK                              | 1.000 EA |
| 075451000A             | COVER, CONDUIT BOX                | 1.000 EA |
| 422919160              | HHCVR KIT,C180,DE,LOUVERED        | 1.000 EA |

Product Information Packet: CD2007R-2 - 7.50HP,1750RPM,DC,1812ATCZ,SPG,

|             |                                       |          |
|-------------|---------------------------------------|----------|
| 422919167   | CVRKT BE                              | 1.000 EA |
| 422919167   | CVRKT BE                              | 1.000 EA |
| 422919172   | HHCVR KIT,C180,ODE,SOLID              | 1.000 EA |
| 422919173   | HHCVR KIT,C180,ODE,LOUVERED           | 1.000 EA |
| 422919174   | CVRKT FE                              | 1.000 EA |
| 422919174   | CVRKT FE                              | 1.000 EA |
| 706305020A  | GUARD, SHAFT                          | 1.000 EA |
| 706320003A  | CONDUIT BOX                           | 1.000 EA |
| 000640000P  | TAG WINDING THERMOST                  | 1.000 EA |
| 000692000NF | NP 2POLE METRIC LABEL                 | 1.000 EA |
| 034180015DA | KEY 1/4X3/16X1-7/8L-BS                | 1.000 EA |
| 036000012HB | HHCS M6X12MM LONG PLATED              | 2.000 EA |
| 032018010AK | HHCS 1/4-20X1-1/4L PLTD.              | 4.000 EA |
| 036501008AB | KPNUT M6-1.0 ZINCPLETED               | 4.000 EA |
| 036600008AB | MFWSH M6 PLATED                       | 4.000 EA |
| 706364051BA | BRHLD METRIC SPRING CHG.              | 2.000 EA |
| 706372003A  | ROCKR                                 | 1.000 EA |
| MG5047      | VARNISH 004824-001HM                  | 0.200 GA |
| MG1025N19   | WILKOFAS, 778.50, RELIANCE BLUE-GREEN | 0.200 GA |
| PA1100      | PACK FOR #1 SKID; CUSTOM              | 1.000 EA |
| LB1171      | LABEL CARTON 6X6 ON LINE BLANK        | 1.000 EA |
| 482413010Y  | #10 SLEEVING (GREEN)                  | 6.000 FT |
| 482413015Y  | #15 SLVG                              | 6.000 FT |
| 482413010Y  | #10 SLEEVING (GREEN)                  | 6.000 FT |
| 041009029D  | 12-10BUTT CONNECTOR 350 J             | 3.000 EA |
| 041009029B  | CONNECTOR, RTD                        | 4.000 EA |

Product Information Packet: CD2007R-2 - 7.50HP,1750RPM,DC,1812ATCZ,SPG,

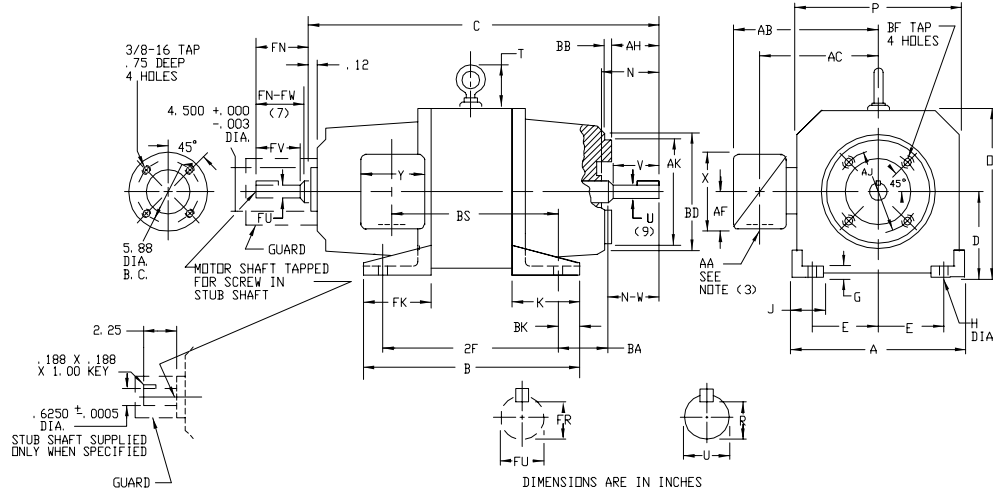
---

|            |  |          |
|------------|--|----------|
| 041009029D | 12-10BUTT CONNECTOR 350 J                | 3.000 EA |
| MN604      | INSTALLATION MANUAL, RPM III DC DC180-DC | 1.000 EA |
| 415000003G | GROUND LUG                               | 1.000 EA |

INDUSTRIAL DIRECT CURRENT MOTORS AND GENERATORS – RPM III

ENCLOSURE: DRIP-PROOF FULLY-GUARDED MOUNTING: FOOT,NEMA AC "C" FACE COOLING: SELF-VENTILATED ACCESSORIES: PROVISION FOR TACHOMETER MOUNTING ONLY WHEN SPECIFIED  
 SPLASHPROOF, TOTALLY ENCLOSED METHOD OF DRIVE:COUPLED OR BELTED NON-VENTILATED

FRAMES C180ATCZ



- (1) "D" DIMENSION WILL NOT BE EXCEEDED. SHIMS UP TO .03 INCHES IN THICKNESS ARE USUALLY REQUIRED FOR COUPLED OR GEARED MACHINES.
- (2) "U" AND "FU" VARY +.0000 - .0005
- (3) TERMINAL BOX CAN BE ROTATED FOR LEAD OUTLET AT TOP, SIDES OR BOTTOM. FOR "X/P" TERMINAL BOX DIMENSIONS SEE 609989-1. FOR MILL TYPE TERMINAL BOX DIMENSIONS SEE 609989-2.
- (4) "R" AND "FR" VARY +.000 - .015
- (5) AA CONDUIT, TERMINAL BOX PROVIDED WITH DOUBLE KNOCKOUT.
- (6) AA PIPE TAP
- (7) OPPOSITE DRIVE END SHAFT SUPPLIED ONLY WHEN SPECIFIED.
- (8) "AK" VARIES +.000, -.003. FACE RUNOUT AND ECCENTRICITY .004 MAX. T. I. R.
- (9) DRIVE END SHAFT DIMENSIONS PER 180T AC MOTOR SHAFT EXTENSION.
- (10) WHEN THE MOTOR APPLICATION DOES NOT REQUIRE THE USE OF DPP, DRIVE END, ADD .25 TO "C" DIM. FOR BRACKET COVER.

TERMINAL BOX LOCATED ON OPPOSITE SIDE WHEN F-2, W-1, W-4, W-5, W-7 OR C-1 MOUNTING IS SPECIFIED. BOX LOCATED ON TOP WHEN SPECIFIED.

MOTOR WEIGHT MAY VARY 15% FOR NON-STANDARD RATINGS AND/OR ACCESSORIES. IF MOUNTING CLEARANCE DETAILS ARE REQUIRED, CONSULT FACTORY.

DIMENSIONS ARE IN INCHES

| FRAME               | A    | DK (1) | E    | G   | H   | J    | D    | P    | T    | BA   | K    | FK   | BK  | BB  | BD   | BF TAP | *DEPTH* | AJ   | AK (8) |
|---------------------|------|--------|------|-----|-----|------|------|------|------|------|------|------|-----|-----|------|--------|---------|------|--------|
| C1811ATCZ-C1812ATCZ | 9.00 | 4.50   | 3.75 | .31 | .44 | 1.50 | 8.88 | 8.75 | 1.88 | 2.75 | 4.38 | 4.38 | .50 | .25 | 8.75 | 1/2-13 | .88     | 7.25 | 8.500  |

| FRAME     | C (10) | B     | BS    | 2F    | DRIVE END SHAFT AND KEY (9) |      |      |        |      |       |      |      |      |       | OPPOSITE DRIVE END SHAFT AND KEY (7) |      |        |      | WT. LBS. |      |
|-----------|--------|-------|-------|-------|-----------------------------|------|------|--------|------|-------|------|------|------|-------|--------------------------------------|------|--------|------|----------|------|
|           |        |       |       |       | AH                          | N    | N-W  | UK (2) | V    | R (4) | SG   | LGTH | FN   | FN-FW | FK (2)                               | FV   | FR (4) | SG   |          | LGTH |
| C1811ATCZ | 24.06  | 14.00 | 11.00 | 12.50 | 2.62                        | 3.12 | 2.88 | 1.1250 | 2.62 | .986  | .250 | 1.75 | 2.44 | 2.25  | 1.1250                               | 2.00 | .986   | .250 | 1.38     | 180  |
| C1812ATCZ | 25.56  | 15.50 | 12.50 | 14.00 | 2.62                        | 3.12 | 2.88 | 1.1250 | 2.62 | .986  | .250 | 1.75 | 2.44 | 2.25  | 1.1250                               | 2.00 | .986   | .250 | 1.38     | 215  |

| FRAME    | MAX. AMPS | STEEL TERMINAL BOX DIMENSIONS |      |      |      |      |                 |            |               |      |      | PART NUMBER |      |      |            |
|----------|-----------|-------------------------------|------|------|------|------|-----------------|------------|---------------|------|------|-------------|------|------|------------|
|          |           | STANDARD SIZE                 |      |      |      |      | ONE SIZE LARGER |            |               |      |      |             |      |      |            |
|          |           | AA(5)                         | AB   | AC   | AF   | X    | Y               | AA(5)      | AB            | AC   | AF   |             | X    | Y    |            |
| C180ATCZ | 40        | 3/4 & 1"                      | 7.31 | 5.75 | 1.94 | 4.38 | 5.00            | 705028-1-R | 1-1/4 & 1-1/2 | 8.31 | 6.31 | 2.50        | 5.50 | 6.12 | 705029-1-R |
|          | 96        | 1-1/4 & 1-1/2                 | 8.31 | 6.31 | 2.50 | 5.50 | 6.12            | 705029-1-R | 2" & 2-1/2"   | 9.44 | 6.69 | 3.19        | 7.00 | 7.62 | 705030-1-R |

| FRAME    | MAX. AMPS | CAST IRON TERMINAL BOX DIMENSIONS |       |      |      |      |                 |            |       |       |      | PART NUMBER |      |      |            |
|----------|-----------|-----------------------------------|-------|------|------|------|-----------------|------------|-------|-------|------|-------------|------|------|------------|
|          |           | STANDARD SIZE                     |       |      |      |      | ONE SIZE LARGER |            |       |       |      |             |      |      |            |
|          |           | AA(6)                             | AB    | AC   | AF   | X    | Y               | AA(6)      | AB    | AC    | AF   |             | X    | Y    |            |
| C180ATCZ | 18        | 3/4                               | 9.38  | 7.38 | 2.50 | 5.00 | 5.75            | 705028-2-S | 1     | 9.38  | 7.38 | 2.50        | 5.00 | 5.75 | 705028-2-T |
|          | 40        | 1                                 | 9.38  | 7.38 | 2.50 | 5.00 | 5.75            | 705028-2-T | 1-1/2 | 10.31 | 7.88 | 3.00        | 6.00 | 7.00 | 705029-2-R |
|          | 96        | 1-1/2                             | 10.31 | 7.88 | 3.00 | 6.00 | 7.00            | 705029-2-R | 2     | 10.31 | 7.88 | 3.00        | 6.00 | 7.00 | 705029-2-S |

CUSTOMER IS RESPONSIBLE FOR DETERMINING THAT BALDOR'S PRODUCT WILL PERFORM SUITABLY IN THE INTENDED APPLICATION.

|                                 |                              |                   |
|---------------------------------|------------------------------|-------------------|
| REV. DESC: REVISE VIEW GEOMETRY | VERSION: 01                  | TDR: 000000960234 |
| REV. LTR: A                     | REvised: 03:11:08 01/20/2016 | BY: USPABLO       |
| FILE: \RSN\00032\057            |                              |                   |
| MTL: -                          |                              |                   |

**BALDOR**

DIMENSION DRAWING,C180ATCZ,TENV,DPP,FOOT MTG.,NEMA AC C-FACE

SH 1 of 1

609980-023

609980-023