

BALDOR® • RELIANCE 

Product Information Packet

CESWDM3554T

1.5HP, 1755RPM, 3PH, 60HZ, 145TC, 3534M, TENV

| Part Detail | | | | | | | |
|-------------|---------|-------------|------------|-------------|--------|---------------|------------|
| Revision: | P | Status: | PRD/A | Change #: | | Proprietary: | No |
| Type: | AC | Elec. Spec: | 35WGM613 | CD Diagram: | CD0005 | Mfg Plant: | |
| Mech. Spec: | 35SS621 | Layout: | 35LYSS621 | Poles: | 04 | Created Date: | 11-16-2011 |
| Base: | RG | Eff. Date: | 08-09-2018 | Leads: | 9#18 | | |

| Specs | | | |
|---------------------------------|-------------------------|--------------------------------|----------------------|
| Catalog Number: | CESWDM3554T | Insulation Class: | F |
| Enclosure: | TENV | Inverter Code: | Inverter Ready |
| Frame: | 145TC | KVA Code: | K |
| Frame Material: | Stainless Steel | Lifting Lugs: | No Lifting Lugs |
| Output @ Frequency: | 1.500 HP @ 60 HZ | Locked Bearing Indicator: | Locked Bearing |
| Synchronous Speed @ Frequency: | 1800 RPM @ 60 HZ | Motor Lead Quantity/Wire Size: | 9 @ 18 AWG |
| Voltage @ Frequency: | 460.0 V @ 60 HZ | Motor Lead Exit: | Ko Box |
| | 230.0 V @ 60 HZ | Motor Lead Termination: | Flying Leads |
| XP Class and Group: | None | Motor Type: | 3534M |
| XP Division: | Not Applicable | Mounting Arrangement: | F1 |
| Agency Approvals: | UR | Power Factor: | 76 |
| | CSA EEV | Product Family: | Wash Down Paint Free |
| | CSA | Pulley End Bearing Type: | Sealed Bearing |
| Auxillary Box: | No Auxillary Box | Pulley Face Code: | C-Face |
| Auxillary Box Lead Termination: | None | Pulley Shaft Indicator: | Standard |
| Base Indicator: | Rigid | Rodent Screen: | None |
| Bearing Grease Type: | Polyrex EM (-20F +300F) | RoHS Status: | ROHS COMPLIANT |
| Blower: | None | Shaft Extension Location: | Pulley End |

| | | | |
|---------------------------------------|---------------------------|------------------------------------|---------------------|
| Current @ Voltage: | 2.100 A @ 460.0 V | Shaft Ground Indicator: | No Shaft Grounding |
| | 4.200 A @ 230.0 V | Shaft Rotation: | Reversible |
| | 4.400 A @ 208.0 V | Shaft Slinger Indicator: | No Slinger |
| Design Code: | B | Speed Code: | Single Speed |
| Drip Cover: | No Drip Cover | Motor Standards: | NEMA |
| Duty Rating: | CONT | Starting Method: | Direct on line |
| Electrically Isolated Bearing: | Not Electrically Isolated | Thermal Device - Bearing: | NONE (OLD) |
| Feedback Device: | NO FEEDBACK | Thermal Device - Winding: | None |
| Front Face Code: | Standard | Vibration Sensor Indicator: | No Vibration Sensor |
| Front Shaft Indicator: | None | Winding Thermal 1: | None |
| Heater Indicator: | No Heater | Winding Thermal 2: | None |

| Nameplate NP1669L | | | | | | | | | | |
|-------------------|---------------|--|------|----|----------------|------|-----|-------|----|---|
| CAT.NO. | CESWDM3554T | | | | | | | | | |
| SPEC. | 35SS621M613G1 | | | | | | | | | |
| HP | 1.5 | | | | | | | | | |
| VOLTS | 230/460 | | | | | | | | | |
| AMP | 4.2/2.1 | | | | | | | | | |
| RPM | 1755 | | | | | | | | | |
| FRAME | 145TC | | | | HZ | 60 | | | PH | 3 |
| SER.F. | 1.15 | | CODE | K | DES | B | | CLASS | F | |
| NEMA-NOM-EFF | 86.5 | | PF | 76 | | | | | | |
| RATING | 40C AMB-CONT | | | | | | | | | |
| CC | 010A | | | | USABLE AT 208V | | 4.4 | | | |
| DE | 6205 | | | | ODE | 6203 | | | | |
| ENCL | TENV | | SN | | | | | | | |
| BLANK | | | | | | | | | | |

| Parts List | | |
|--------------|--|----------|
| Part Number | Description | Quantity |
| SA234436 | SA 35SS621M613G1 | 1.000 EA |
| RA221409 | RA 35SS621M613G1 | 1.000 EA |
| NS2512A01 | INSULATOR, CONDUIT BOX X | 1.000 EA |
| 35CB5001A21 | CONDUIT BOX KIT, FOR SUPER II WASHDOWN | 1.000 EA |
| 11XW1032G06 | 10-32 X .38, TAPTITE II, HEX WSHR SLTD U | 1.000 EA |
| 35EP3122D00U | MASTER ODE,203 BRG,.125NPT DRNS(BALL BUR | 1.000 EA |
| HW4500A33 | 1/8 NPT STAINLESS,HOLO-KROME #13002,PRES | 3.000 EA |
| HW5100A03 | WAVY WASHER (W1543-017) | 1.000 EA |
| 35EP3307E00U | MASTER DE,205 BRG,1.623SH,.125NPT DRNS,C | 1.000 EA |
| HW4500A33 | 1/8 NPT STAINLESS,HOLO-KROME #13002,PRES | 3.000 EA |
| HW4606A02 | JM CLIPPER/SEAL (LWE-0938-1624-AL23) | 1.000 EA |
| 12XN1032S20 | 10-32 X 1-1/4 HEX M.S. , STAINLESS STEEL | 2.000 EA |
| HA1049A01 | DUBO LOK WASHER SIZE 10 (NYLON LOCK SEAL | 2.000 EA |
| HA1049A01 | DUBO LOK WASHER SIZE 10 (NYLON LOCK SEAL | 4.000 EA |
| HW2502D13 | SS KEY, 3/16 SQ X 1.375 | 1.000 EA |
| HA7000A01 | KEY RETAINER 7/8" DIA SHAFT | 1.000 EA |
| MJ5001A02 | 732 CL SEALANT 3 OZ DIXIE BEARING 289100 | 0.001 EA |
| 85XU0407S04 | 4X1/4 U DRIVE PIN STAINLESS | 2.000 EA |
| LB1164 | LABEL,WARNING AND DRAIN | 1.000 EA |
| HA5027A02 | HA4054 T-DRAIN X2 BAGGED WITH LABEL | 1.000 EA |
| MJ1000A02 | GREASE, POLYREX EM EXXON (USe 4824-15A) | 0.050 LB |
| HA3100S25 | THRUBOLT 10-32 X 9.500 SS TDR #23687 | 4.000 EA |
| LC0005 | CONN.DIA.,TY M,9-LD,DUAL VOLT,REVERSING | 1.000 EA |
| NP1669L | SS WD SUPER-E UL CSA-EEV PREM REV MTG | 1.000 EA |

| Parts List (continued) | | |
|-------------------------------|---|-----------------|
| Part Number | Description | Quantity |
| 36PA1000 | PKG GRP, PRINT PK1016A06 | 1.000 EA |
| MN416A01 | TAG-INSTAL-MAINT no wire (1200/bx) 5/18 | 1.000 EA |

AC Induction Motor Performance Data

Record # 52498 - Typical performance - not guaranteed values

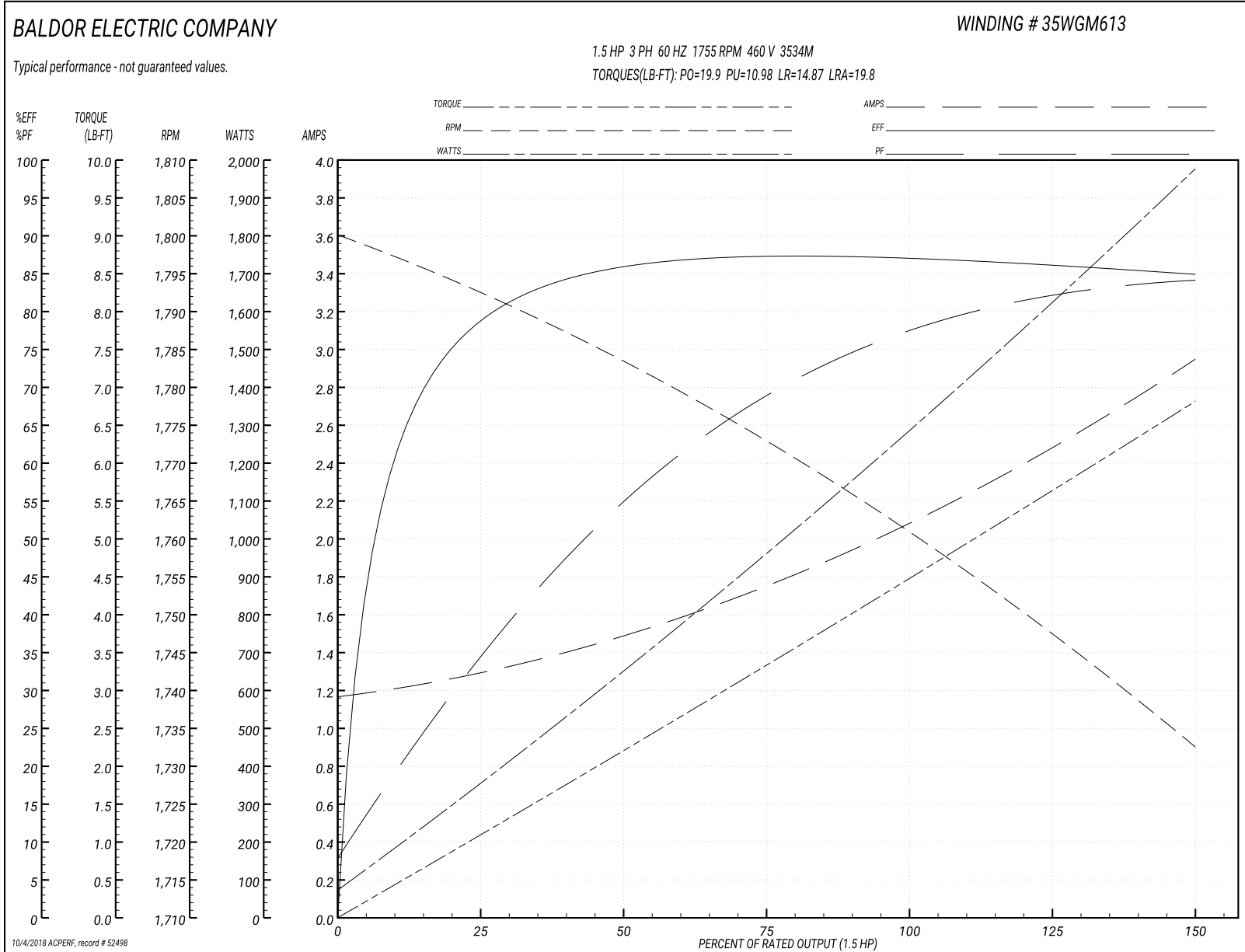
| | | |
|-------------------------------|--------------------|------------------------|
| Winding: 35WGM613-R012 | Type: 3534M | Enclosure: TENV |
|-------------------------------|--------------------|------------------------|

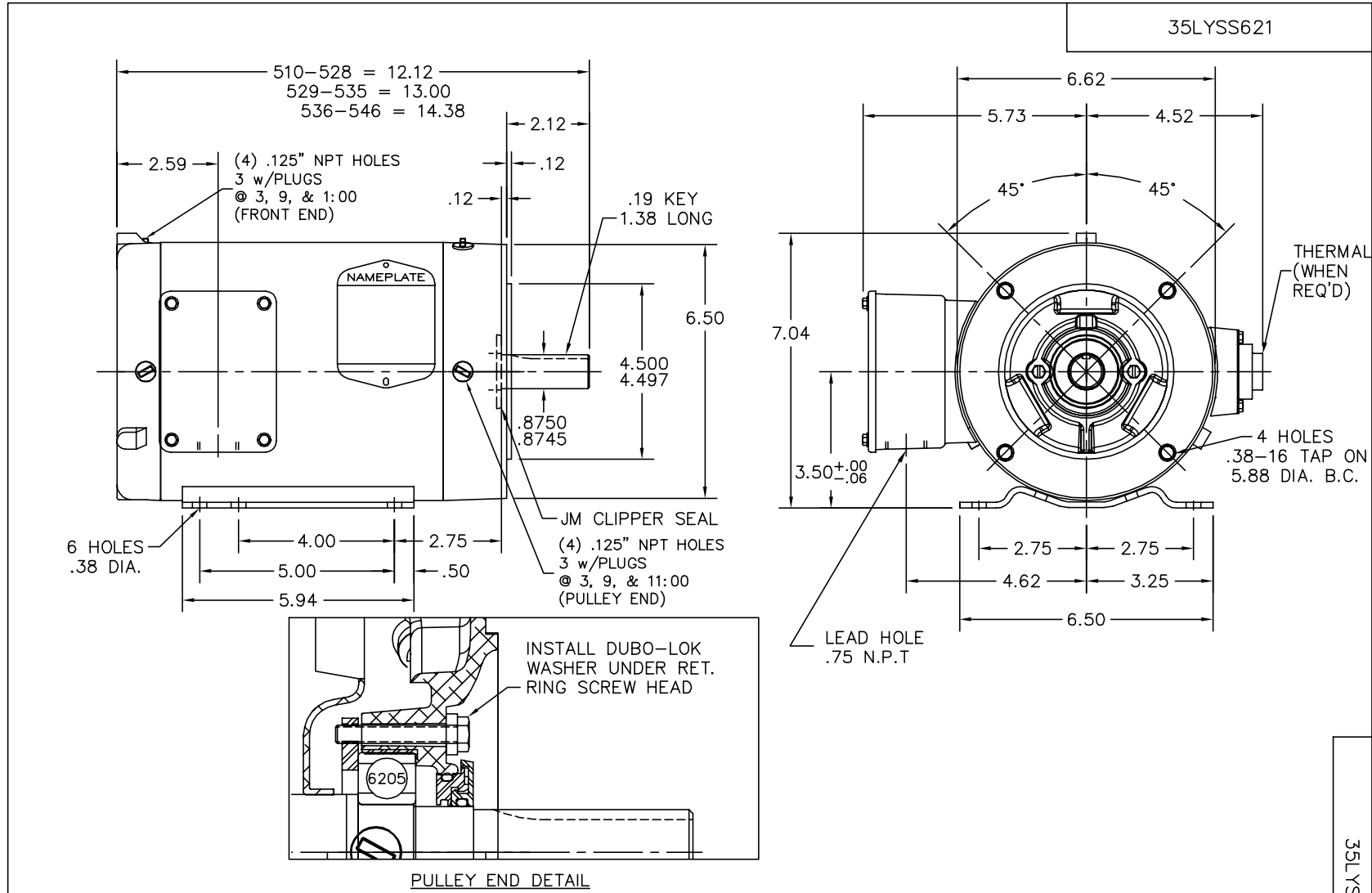
| Nameplate Data | | | | 460 V, 60 Hz: High Voltage Connection | |
|-----------------------|--------------|--------------|----|--|--------------------------|
| Rated Output (HP) | 1.5 | | | Full Load Torque | 4.49 LB-FT |
| Volts | 230/460 | | | Start Configuration | direct on line |
| Full Load Amps | 4.2/2.1 | | | Breakdown Torque | 19.9 LB-FT |
| R.P.M. | 1755 | | | Pull-up Torque | 10.98 LB-FT |
| Hz | 60 | Phase | 3 | Locked-rotor Torque | 14.87 LB-FT |
| NEMA Design Code | B | KVA Code | K | Starting Current | 19.8 A |
| Service Factor (S.F.) | 1.15 | | | No-load Current | 1.18 A |
| NEMA Nom. Eff. | 86.5 | Power Factor | 76 | Line-line Res. @ 25°C | 8.98 Ω |
| Rating - Duty | 40C AMB-CONT | | | Temp. Rise @ Rated Load | 88°C |
| S.F. Amps | | | | Temp. Rise @ S.F. Load | 104°C |
| | | | | Locked-rotor Power Factor | 48.1 |
| | | | | Rotor inertia | 0.201 LB-FT ² |

Load Characteristics 460 V, 60 Hz, 1.5 HP

| % of Rated Load | 25 | 50 | 75 | 100 | 125 | 150 | S.F. |
|-----------------|------|------|------|------|------|------|------|
| Power Factor | 36 | 56 | 69 | 77 | 82 | 85 | 79 |
| Efficiency | 78.6 | 85.5 | 87.4 | 87.1 | 86.3 | 84.8 | 88.5 |
| Speed | 1794 | 1784 | 1772 | 1760 | 1747 | 1733 | 1757 |
| Line amperes | 1.28 | 1.48 | 1.76 | 2.1 | 2.5 | 2.94 | 2.3 |

Performance Graph at 460V, 60Hz, 1.5HP Typical performance - Not guaranteed values





CUSTOMER IS RESPONSIBLE FOR DETERMINING THAT BALDOR'S PRODUCT WILL PERFORM SUITABLY IN THE INTENDED APPLICATION.

| | | |
|---------------------------------------|------------------------------|-------------------|
| REV. DESC: UPDATE ENDPLATES AND NOTES | | |
| REV. LTR: B | VERSION: 02 | TDR: 000001080440 |
| FILE: \AAA\00186\941 | REVISED: 11:42:48 08/03/2018 | BY: FPJFQGO |
| MTL: - | | |

BALDOR - RELIANCE®

HORZ 143-5TC TENV 35M WD2 (PAINT FREE) W/.75 NPT LEAD HOLE

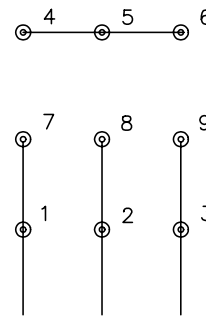
SH 1 of 1

35LYSS621

CD0005

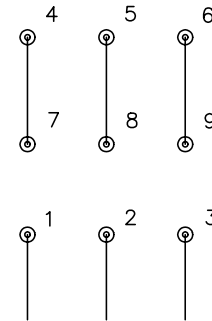


LOW VOLTAGE
(2Y)



LINE

HIGH VOLTAGE
(1Y)



LINE

NOTES:

1. INTERCHANGE ANY TWO LINE LEADS TO REVERSE ROTATION.
2. OPTIONAL THERMOSTATS ARE PROVIDED WHEN SPECIFIED.
3. ACTUAL NUMBER OF INTERNAL PARALLEL CIRCUITS MAY BE A MULTIPLE OF THOSE SHOWN ABOVE.
4. LEAD COLORS ARE OPTIONAL. LEADS MUST ALWAYS BE NUMBERED AS SHOWN.

| | | | |
|---|---------|-------------------------|--------------|
| REV. DESC: REVISE TO SHOW OPTIONAL COLORS | | | |
| REV. LTR: E | BY: JLP | REVISED: 01/19/99 10:15 | TDR: 0171435 |
| 900000 | | FILE: AAA00005140 | MDL: - |
| | | MTL: - | |

BALDOR ELECTRIC Co.

3PH, DV, 9 LEADS

CD0005