

M-12363

2

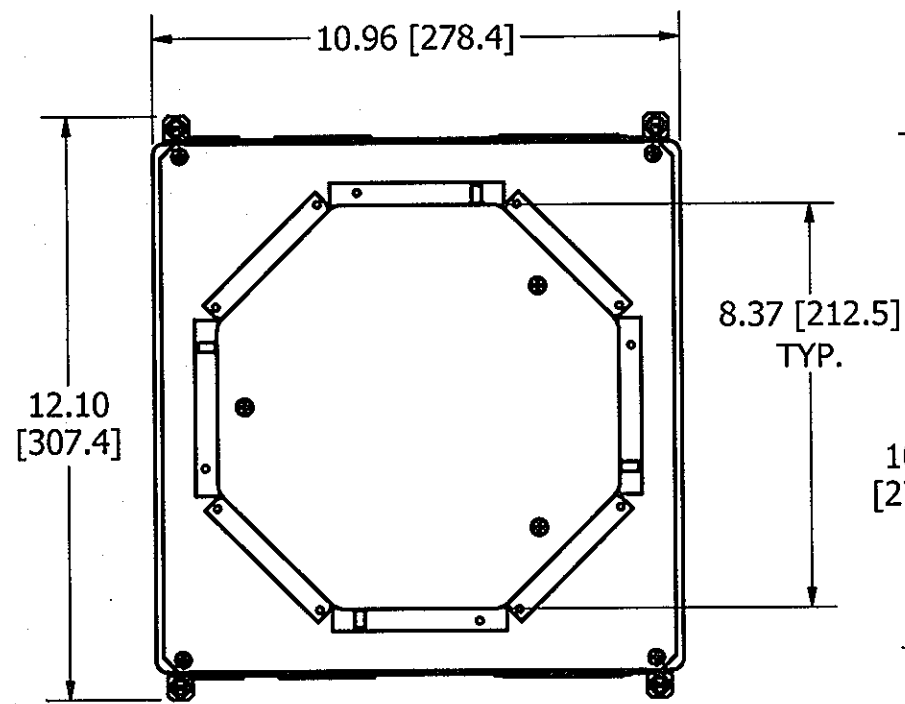
CONCENTRIC KNOCKOUTS

LOCATION	QUANTITY	TRADE SIZE
ENDS	1/END	1/2", 3/4"
ENDS	1/END	3/4", 1", 1-1/4", 1-1/2"
ENDS	1/END	1", 1-1/4", 1-1/2", 2"
SIDES	2/SIDE	3/4", 1", 1-1/4", 1-1/2"
BOTTOM	2	1/2", 3/4"
BOTTOM	4	1/2", 3/4", 1", 1-1/4"

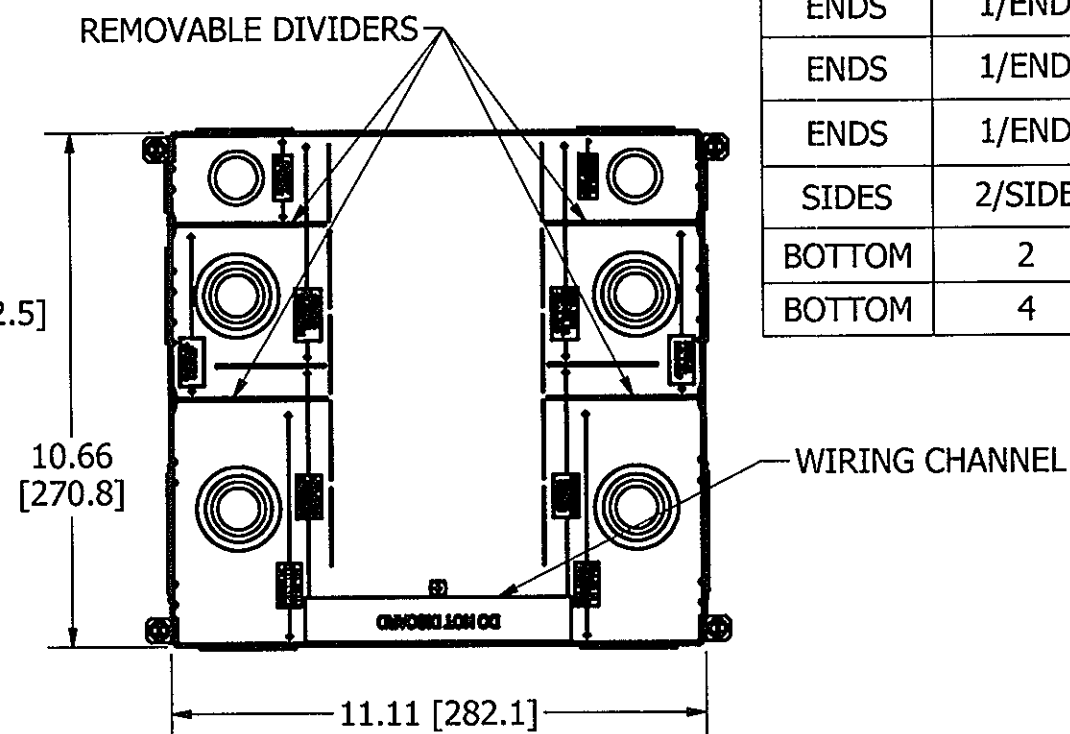
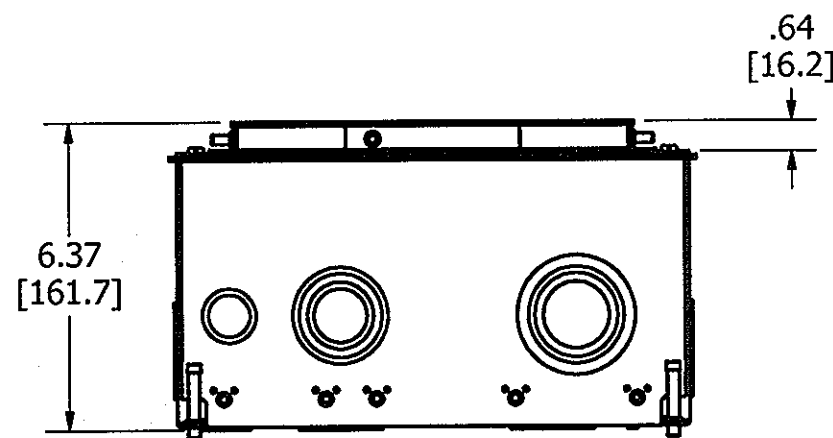
LIST OF PARTS

DESCRIPTION	MATERIAL	FINISH
BOX ASSEMBLY	16 GA. STEEL	ZINC **
DIVIDERS	THERMOPLASTIC	
TOP MOUNTING ASSY	14 GA. STEEL	ZINC
TRANSITION ASSY	14 GA. STEEL	ZINC
GROUND WIRES	COPPER	
WIRING CHANNEL	16 GA. STEEL	ZINC
FASTENERS	STEEL	ZINC
TEMPORARY COVER	14 GA. STEEL	ZINC

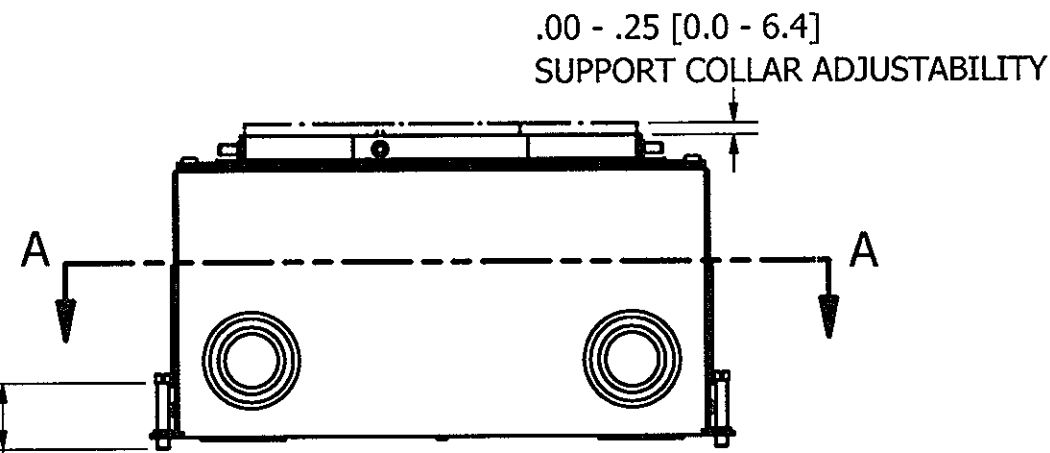
** CATALOG NO. CFB10G55RCR BOX ASSEMBLY IS GALVANIZED AND EPOXY COATED ON EXTERIOR SURFACE.



TOP VIEW

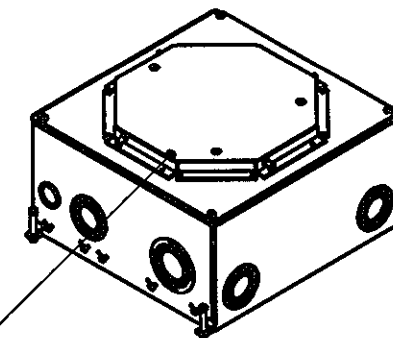
SECTION A-A
VIEW THROUGH BOX BELOW TRANSITION

END VIEW

SIDE VIEW
TEMPORARY COVER NOT SHOWN4X 1.38 [35.1]
LEVELING SCREW

NOTES:

1. ALL DIMENSIONS ARE IN INCHES AND [MILLIMETERS].
2. PRODUCT IS cULus LISTED. COMPLIES WITH UL 514A.
3. EACH GANG SUPPLIED WITH 6" [152.4] 12 GA. AWG GROUND PIGTAIL.
4. MINIMUM CONCRETE POUR: 6.50" [165.1].
5. WIRING CHAMBER VOLUMES : (2) 1 GANG: 25 IN³ [409.7 CM³], (2) 2 GANG: 50 IN³ [819.4 CM³], (2) 3 GANG: 71 IN³ [1163.5 CM³].
6. WIRING CHANNEL AREA: 2.46 IN² [1589 MM²].



TEMPORARY COVER

ISOMETRIC

CODE 74545

DIMENSION SHEET FOR CAT. NO.

CFB10G55RCR, CFB10G55RCR

REPAIRABLE ☐NON-REPAIRABLE ☒

B

M-12363

2

2	REVISED PER DCN20776	SBW	9/11/2014
1	INITIAL RELEASE PER DCN19233	SBW	11/15/2013
SYM	DESCRIPTION	APP	DATE

THE DESIGN AND DIMENSIONS OF THE
PRODUCT SHOWN ON THIS DRAWING ARE
SUBJECT TO CHANGE WITHOUT NOTICE

TITLE
CONCRETE FLOOR BOX, 10 GANG FOR
8" ROUND COVER

TOLERANCES UNLESS
OTHERWISE SPECIFIED

.XX = ± .01
.XXX = ± .005
ANGLES = ± 2°

WIRING DEVICE-KELLEMS
HUBBELL INCORPORATED
SHELTON, CT.

DR. BY	SBW	APP. BY	
TR. BY		SCALE	1/4
CHK'D BY	SM	DATE	9/19/2013