

BALDOR® • RELIANCE 

Product Information Packet

CFM3156A

1HP,1140RPM,3PH,60HZ,56YZ,3522M,OPEN,F1

Part Detail							
Revision:	G	Status:	PRD/A	Change #:		Proprietary:	No
Type:	AC	Elec. Spec:	35WGN681	CD Diagram:	CD0007	Mfg Plant:	
Mech. Spec:	35K306	Layout:	35LYK306	Poles:	06	Created Date:	01-18-2013
Base:	N	Eff. Date:	04-26-2018	Leads:	12#18 SEE NOTES		Y

Specs			
Catalog Number:	CFM3156A	Insulation Class:	F
Enclosure:	OPAO	Inverter Code:	Not Inverter
Frame:	56YZ	KVA Code:	H
Frame Material:	Steel	Lifting Lugs:	No Lifting Lugs
Output @ Frequency:	1.000 HP @ 60 HZ	Locked Bearing Indicator:	No Locked Bearing
Synchronous Speed @ Frequency:	1200 RPM @ 60 HZ	Motor Lead Quantity/Wire Size:	12 @ 18 AWG
Voltage @ Frequency:	208.0 V @ 60 HZ	Motor Lead Exit:	Terminal Panel
	230.0 V @ 60 HZ	Motor Lead Termination:	None
	460.0 V @ 60 HZ	Motor Type:	3522M
XP Class and Group:	None	Mounting Arrangement:	F1
XP Division:	Not Applicable	Power Factor:	68
Agency Approvals:	UR	Product Family:	General Purpose
	CSA	Pulley End Bearing Type:	Sealed Bearing
Auxillary Box:	No Auxillary Box	Pulley Face Code:	Terminal Panel
Auxillary Box Lead Termination:	None	Pulley Shaft Indicator:	Key And Flat
Base Indicator:	No Mounting	Rodent Screen:	None
Bearing Grease Type:	Polyrex EM (-20F +300F)	Shaft Extension Location:	Pulley End
Blower:	None	Shaft Ground Indicator:	No Shaft Grounding

Current @ Voltage:	1.750 A @ 460.0 V	Shaft Rotation:	Reversible
	3.500 A @ 230.0 V	Shaft Slinger Indicator:	No Slinger
	3.600 A @ 208.0 V	Speed Code:	Single Speed
Design Code:	B	Motor Standards:	NEMA
Drip Cover:	No Drip Cover	Starting Method:	Direct on line
Duty Rating:	CONT	Thermal Device - Bearing:	NONE (OLD)
Electrically Isolated Bearing:	Not Electrically Isolated	Thermal Device - Winding:	Do Not Use Eve-Not Valiid
Feedback Device:	NO FEEDBACK	Vibration Sensor Indicator:	No Vibration Sensor
Front Face Code:	Standard	Winding Thermal 1:	Automatic Thermal Overload
Front Shaft Indicator:	None	Winding Thermal 1 Location:	SB
Heater Indicator:	No Heater	Winding Thermal 2:	None

Nameplate NP1257L	
CAT.NO.	CFM3156A
SPEC.	35K306N681G1
HP	1 AIR-OVER
VOLTS	208-230/460
AMP	3.6-3.5/1.75
RPM	1140
FRAME	56YZ
SER.F.	1.15
NEMA-NOM-EFF	75.5
RATING	40C AMB-CONT
CC	
DE	6203
ENCL	OPAO
CODE	H
PF	68
ODE	6205
SN	
HZ	60
DES	B
CL	F
PH	3
	USABLE AT 208V

Parts List		
Part Number	Description	Quantity
SA257032	SA 35K306N681G1	1.000 EA
RA243819	RA 35K306N681G1	1.000 EA
TPMYJ56WM	THERMAL 3PH 0.75 AUT 135C	1.000 EA
RM1001A01	GROMMET "MIDSTATES"	1.000 EA
53XT0832G07	8-32X7/16 PN STD SR TY23G X	1.000 EA
HA6001A01	THERMAL RETAINER (PLATED)	1.000 EA
51XW0832A07	8-32 X .44, TAPTITE II, HEX WSHR SLTD SE	2.000 EA
35EP3210B00	MASTER DE,205 BRG,1.000SH	1.000 EA
51XW0832A07	8-32 X .44, TAPTITE II, HEX WSHR SLTD SE	2.000 EA
MJ5004A05	#242-21 LOCTITE GENERAL PURPOSE MED. STR	0.010 EA
HW5100A03	WAVY WASHER (W1543-017)	1.000 EA
35EP3102B42	PUEP SH THRU HOLE .50 NPT, 2 #26 DRILL F	1.000 EA
XY1032A02	10-32 HEX NUT DIRECTIONAL SERRATION	4.000 EA
35CB4500SP	TERMINAL BOX LID STAMPED	1.000 EA
HA1041A01	CUPPED SLINGER KENCO	1.000 EA
HW2501D40	KEY, 3/16 SQ X 4.750	1.000 EA
HA7000A04	KEY RETAINER 0.625 DIA SHAFTS	1.000 EA
85XU0407S04	4X1/4 U DRIVE PIN STAINLESS	2.000 EA
10XN2520A06	1/4 20X3/8 HX HD CAP	3.000 EA
MJ1000A02	GREASE, POLYREX EM EXXON (USe 4824-15A)	0.050 LB
35GS1002A02	GASKET,1/16 THICK NEOPRE.FT.SMITH MADE	1.000 EA
51XW0832A07	8-32 X .44, TAPTITE II, HEX WSHR SLTD SE	2.000 EA
MG1000G27	MED CHARCOAL METALLIC GREY 400-0096	0.017 GA
SP5079A02	MODEL 35 3PH TERM PANEL CONN 12LD DUAL V	1.000 EA

Parts List (continued)		
Part Number	Description	Quantity
HA3100A19	THRUBOLT 10-32 X 9.625	4.000 EA
LB1118	LABEL,WARNING (ROLL LABEL)	1.000 EA
LC0007A01	CONN LABEL TYPE M,DV,REV,12LD 2Y/1Y TERM	1.000 EA
NP1257L	ALUM UL CSA CC THERMAL REV MTG	1.000 EA
36PA1000	PKG GRP, PRINT PK1016A06	1.000 EA
PK3085X	FOAM SHAFT SUPPORT PRECUT 4-1/4 X 6-3/4	1.000 EA
PK3082	STYROFOAM CRADLE	1.000 EA
MN416A01	TAG-INSTAL-MAINT no wire (1200/bx) 5/18	1.000 EA

AC Induction Motor Performance Data

Record # 41768 - Typical performance - not guaranteed values

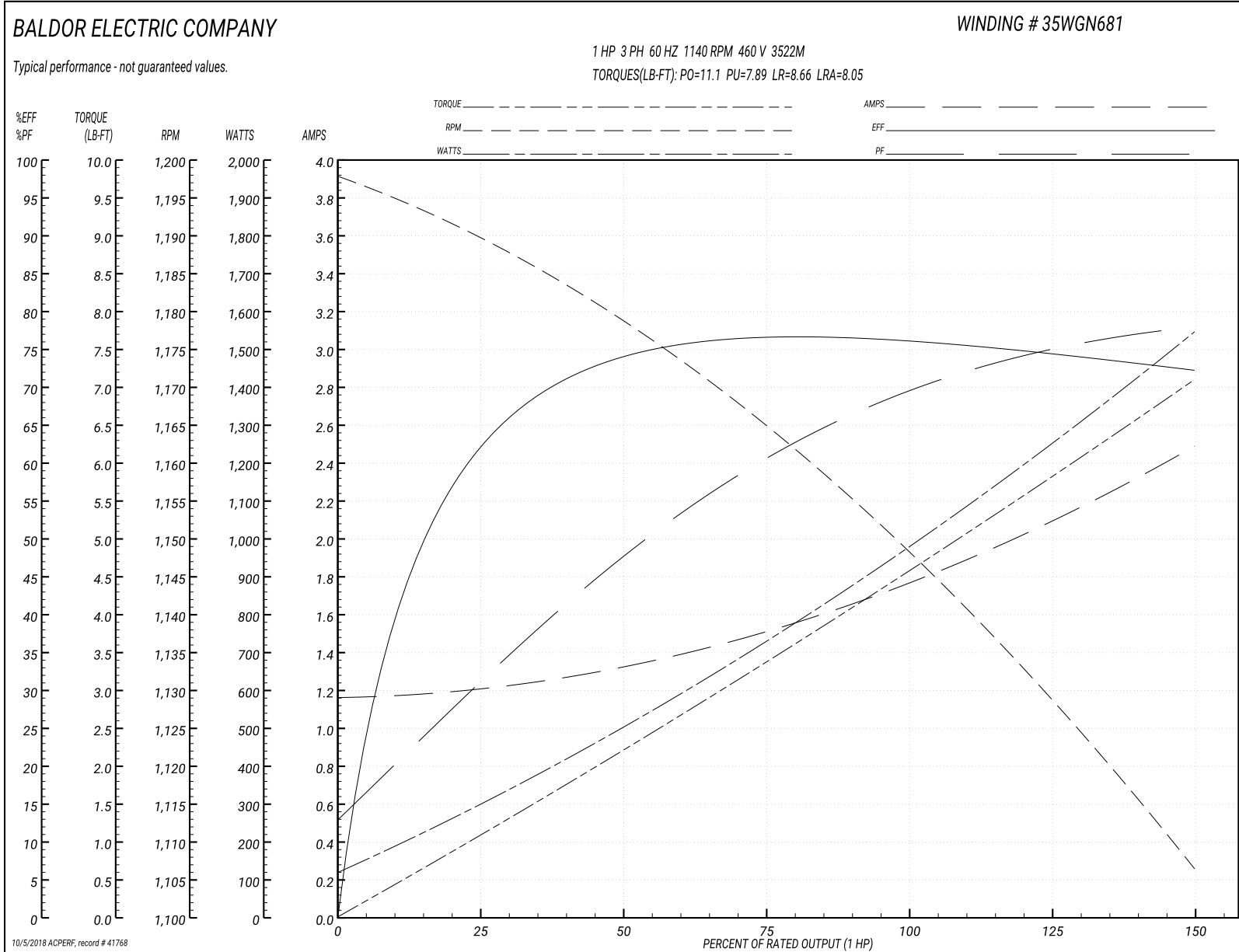
Winding: 35WGN681-R001	Type: 3522M	Enclosure: OPAO
-------------------------------	--------------------	------------------------

Nameplate Data				460 V, 60 Hz: High Voltage Connection	
Rated Output (HP)	1			Full Load Torque	4.57 LB-FT
Volts	208-230/460			Start Configuration	direct on line
Full Load Amps	3.6-3.5/1.75			Breakdown Torque	11.1 LB-FT
R.P.M.	1140			Pull-up Torque	7.89 LB-FT
Hz	60	Phase	3	Locked-rotor Torque	8.66 LB-FT
NEMA Design Code	B	KVA Code	H	Starting Current	8.05 A
Service Factor (S.F.)	1.15			No-load Current	1.16 A
NEMA Nom. Eff.	77	Power Factor	68	Line-line Res. @ 25°C	27.443 Ω
Rating - Duty	40C AMB-CONT			Temp. Rise @ Rated Load	

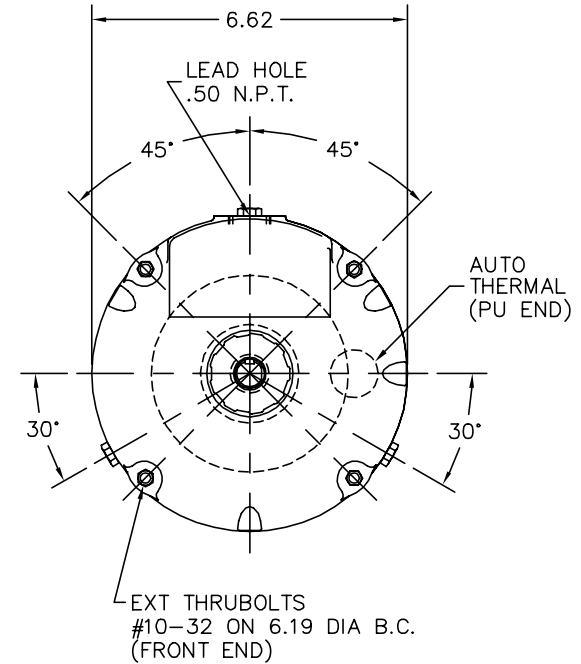
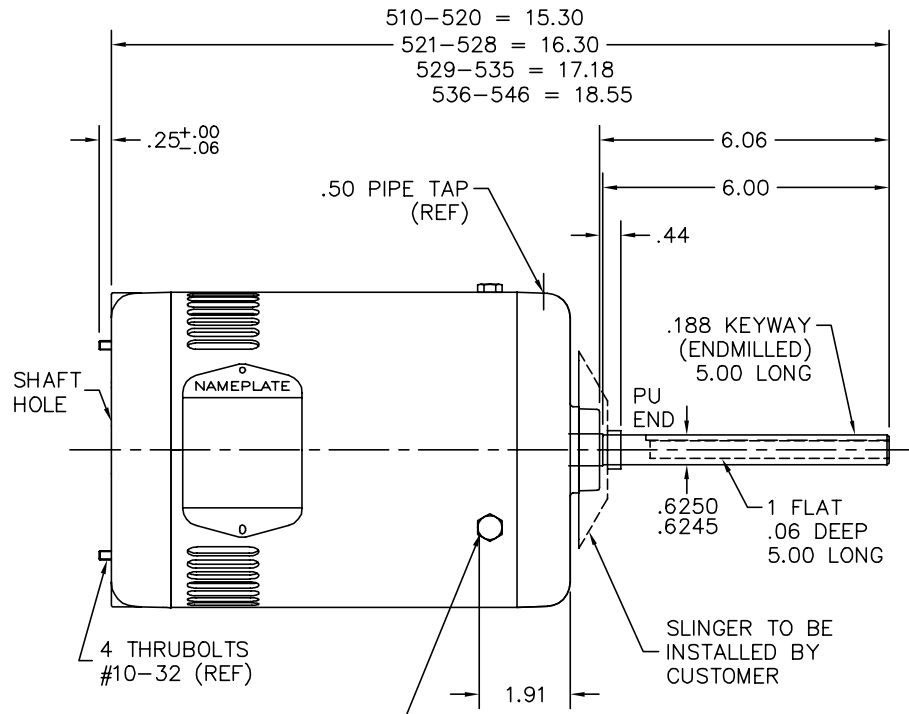
Load Characteristics 460 V, 60 Hz, 1 HP

% of Rated Load	25	50	75	100	125	150	S.F.
Power Factor	32	48	61	68	75	78	72
Efficiency	60.5	73.1	76.6	76.8	74.7	72	75.5
Speed	1188.7	1177.8	1164.4	1149.6	1130.2	1105.1	1138
Line amperes	1.21	1.33	1.51	1.76	2.1	2.49	1.96

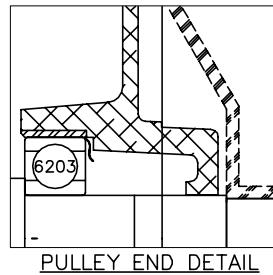
Performance Graph at 460V, 60Hz, 1.0HP Typical performance - Not guaranteed values



35LYK306



3 HEX HEAD SCREWS @ 120° APART



CUSTOMER IS RESPONSIBLE FOR DETERMINING THAT BALDOR'S PRODUCT WILL PERFORM SUITABLY IN THE INTENDED APPLICATION.

REV. DESC: REPLACE ENDPLATES		
REV. LTR: M	VERSION: 02	TDR: 000001041474
FILE: \AAA\00015\695	REVISED: 10:26:02 08/30/2017	BY: USJOBUR22
MTL: -		

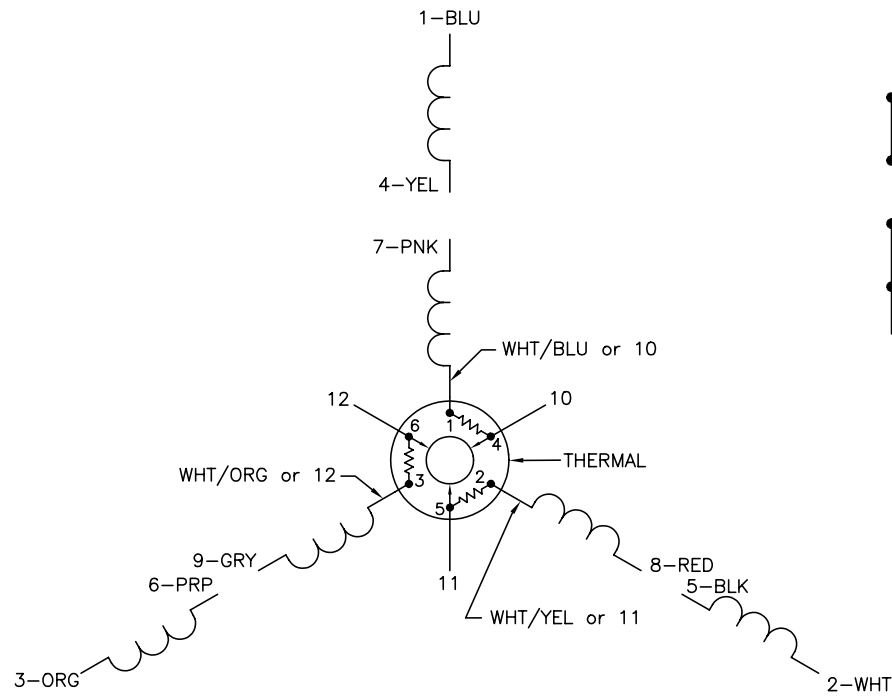
BALDOR

HOR LESS BASE 56YZ OPEN 35M TP. ENCL PUEP

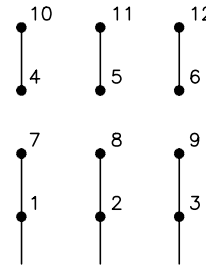
SH 1 of 1

35LYK306

CD0007

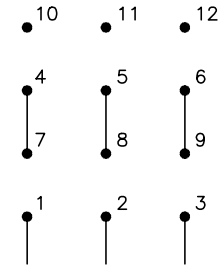


LOW VOLTAGE
(2Y)



LINE

HIGH VOLTAGE
(1Y)



LINE

NOTES:

1. INTERCHANGE ANY TWO LINE LEADS TO REVERSE ROTATION.
2. ACTUAL NUMBER OF INTERNAL PARALLEL CIRCUITS MAY VARY.
3. LEAD COLORS ARE OPTIONAL. LEADS MUST ALWAYS BE NUMBERED AS SHOWN.

REV. DESC: ADDED "CK" PLANT CODE			
REV. LTR: E	BY: EAH	REVISED: 05/06/99 17:1	TDR: 0181040
L00000		FILE: AAA00008370	MDL: -
		MTL: -	

BALDOR ELECTRIC Co.

3PH, DV, THERMAL, 12 LEADS

CD0007