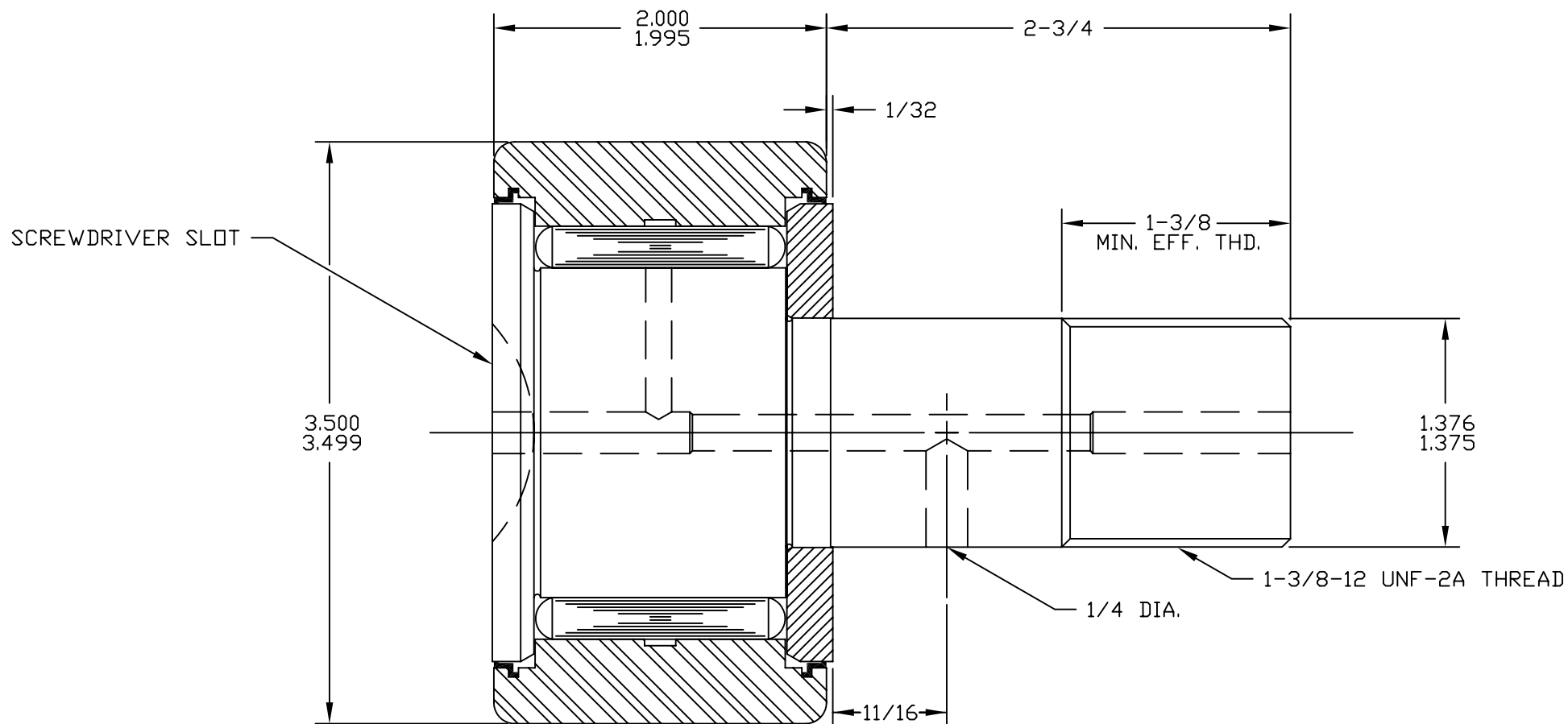


SYM	REVISION	BY	DATE
A	REVISED & REDRAWN	BSK	05/28/96

SCALE: ~



BASIC DYNAMIC CAPACITY - 22050
MAX. ALLOWABLE LOAD - 18700

MAT'L: ST'D BEARING STEELS, SEALS - ACETAL.
BEARING PACKED WITH GENERAL PURPOSE EP GREASE.
RELUBE PROVISIONS WILL ACCEPT 1/4" DRIVE TYPE
FITTINGS, PLUGS SUPPLIED FOR UNUSED HOLES.

TOLERANCES

UNLESS OTHERWISE NOTED
FRACTIONS: ±.010 ANGLES: ±.5
2 PLACE DECIMALS (.00): ±.005
3 PLACE DECIMALS (.000): ±.002

ABC Inc.

ACCURATE BUSHING CO. INC.
Manufacturers of SMITH® Bearing Product
443 NORTH AVENUE
Garwood, NJ 07027

PART NAME	STANDARD CAM FOLLOWER		
PART NO.	CR-3-1/2-X		
DRAWN BY	BSK	DATE	05/28/96
CHECKED BY		FILENAME	CRASSYS/3-1-2-X

CR-3-1/2-X