

FINISHED BORE SLEEVE COUPLINGS



Finished Bore Sleeve Couplings are machined from bar steel. They are fitted with Hollow Head Setscrews.

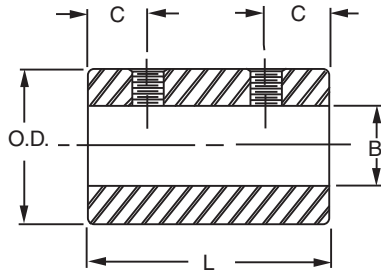


Table No. 1

Specifications

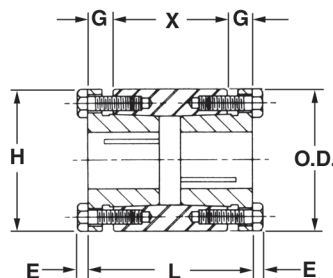
Part No.	O.D.	L	B	C	Wt.
CS-04	1/2"	3/4"	1/4"	3/16"	.06
CS-05	5/8	1	5/16	1/4	.06
CS-06	3/4	1	3/8	1/4	.1
CS-08	1	1 1/2	1/2	3/8	.2
*CS-10	1 1/4	2	5/8	1/2	.5
*CS-12	1 1/2	2	3/4	1/2	.8
*CS-14	1 3/4	2	7/8	1/2	1.0
*CS-16	2	3	1	3/4	1.9
*CS-18	2 1/8	3	1 1/8	3/4	2.1
*CS-20	2 1/4	4	1 1/4	1	3.1
*CS-22	2 1/2	4 1/2	1 3/8	1	4.3

* These sizes are also available with Standard Keyseats. Indicate Keyseat by adding "K" to part number; for example "CS-12K."

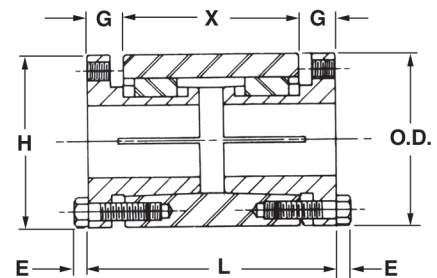
BUSHED TYPE SLEEVE COUPLINGS



Bushed Type Sleeve Couplings are machined from steel for use with BROWNING SPLIT TAPER® Bushings.



Type CSH



Type CSP and CSQ

Table No. 2

Specifications

Part No.	BUSHING		DIMENSIONS						T★	Wt. Lbs.
	Size	Bore Range	O.D.	L	H	G	X	E		
CSH	H	3/8" - 1 1/2"	2 1/2"	2 7/8"	2 1/2"	7/16"	2"	3/16"	1700	1.6
CSP	P1	1/2 - 1 3/4	3	4 1/4	3	5/8	3	1/4	5660	3.4
CSQ	Q1	3/4 - 2 11/16	4 3/8	5 1/2	4 1/8	3/4	4	9/32	14600	9.6

★T = Maximum Recommended Torque in inch pounds for Normal Service. For Shock Loads reduce these ratings by 50%. Maximum Torque shown is based on coupling strength. Smaller shafts in the coupling bore range and short key applications may not transmit this maximum torque, check shaft and key stress.

NOTE—Order two Bushings.