

BALDOR® • RELIANCE 

Product Information Packet

CTM2332T

10 AIR OVERHP,1175RPM,3PH,60HZ,256T,0946

| Part Detail | | | | | | | |
|-------------|--------|-------------|------------|-------------|--------|---------------|------------|
| Revision: | J | Status: | PRD/A | Change #: | | Proprietary: | No |
| Type: | AC | Elec. Spec: | 09WGX829 | CD Diagram: | CD0005 | Mfg Plant: | |
| Mech. Spec: | 09L877 | Layout: | 09LYL877 | Poles: | 06 | Created Date: | 08-14-2015 |
| Base: | RG | Eff. Date: | 10-05-2017 | Leads: | 9#12 | | |

| Specs | | | |
|---------------------------------|-------------------------|--------------------------------|------------------------------|
| Catalog Number: | CTM2332T | Insulation Class: | F |
| Enclosure: | TEAO | Inverter Code: | Not Inverter |
| Frame: | 256T | KVA Code: | H |
| Frame Material: | Iron | Lifting Lugs: | Vertical Lifting Lugs |
| Output @ Frequency: | 10.000 HP @ 60 HZ | Locked Bearing Indicator: | Locked Bearing |
| Synchronous Speed @ Frequency: | 1200 RPM @ 60 HZ | Motor Lead Quantity/Wire Size: | 9 @ 12 AWG |
| Voltage @ Frequency: | 460.0 V @ 60 HZ | Motor Lead Exit: | Ko Box |
| | 230.0 V @ 60 HZ | Motor Lead Termination: | Flying Leads |
| XP Class and Group: | None | Motor Type: | 0946M |
| XP Division: | Not Applicable | Mounting Arrangement: | F1 |
| Agency Approvals: | CSA | Power Factor: | 73 |
| | UR | Product Family: | Chemical Processing (Not DC) |
| Auxillary Box: | No Auxillary Box | Pulley End Bearing Type: | Sealed Bearing |
| Auxillary Box Lead Termination: | None | Pulley Face Code: | Standard |
| Base Indicator: | Rigid | Pulley Shaft Indicator: | Standard |
| Bearing Grease Type: | Polyrex EM (-20F +300F) | Rodent Screen: | None |
| Blower: | None | Shaft Extension Location: | Pulley End |
| Current @ Voltage: | 14.400 A @ 460.0 V | Shaft Ground Indicator: | No Shaft Grounding |

| | | | |
|---------------------------------------|---------------------------|------------------------------------|---------------------|
| | 28.800 A @ 230.0 V | Shaft Rotation: | Reversible |
| | 37.000 A @ 208.0 V | Shaft Slinger Indicator: | Shaft Slinger |
| Design Code: | B | Speed Code: | Single Speed |
| Drip Cover: | No Drip Cover | Motor Standards: | NEMA |
| Duty Rating: | CONT | Starting Method: | Direct on line |
| Electrically Isolated Bearing: | Not Electrically Isolated | Thermal Device - Bearing: | NONE (OLD) |
| Feedback Device: | NO FEEDBACK | Thermal Device - Winding: | None |
| Front Face Code: | Standard | Vibration Sensor Indicator: | No Vibration Sensor |
| Front Shaft Indicator: | None | Winding Thermal 1: | None |
| Heater Indicator: | No Heater | Winding Thermal 2: | None |

| Nameplate NP1258E | | | | |
|-------------------|-------------------|------|----------------|----|
| CAT.NO. | CTM2332T | | | |
| SPEC. | 09L877X829H2 | | | |
| HP | 10 AIR OVER | | | |
| VOLTS | 230/460 | | | |
| AMP | 28.8/14.4 | | | |
| RPM | 1175 | | | |
| FRAME | 256T | HZ | 60 | |
| SER.F. | 1.15 | CODE | H | |
| NEMA-NOM-EFF | 89.5 | DES | B | |
| RATING | 40C AMB-CONT | | PH | 3 |
| CC | | PF | 73 | |
| DE | 6309 | ODE | 6208 | |
| ENCL | TEAO | SN | | |
| | 1800 FPM @ 250CFM | | | |
| | | | CL | F |
| | | | USABLE AT 208V | 37 |

| Parts List | | |
|---------------|--|----------|
| Part Number | Description | Quantity |
| SA306338 | SA 09L877X829H2 | 1.000 EA |
| RA293583 | RA 09L877X829H2 | 1.000 EA |
| 09CB1002A25P | KOBX W/1.25 NPT LEAD HOLE & 2.38 MTG HOL | 1.000 EA |
| 09GS1010 | GASKET, DWG, LEADWIRE SEPERATOR | 1.000 EA |
| 10XN2520K12 | 1/4-20 X.75 GRD 5 | 4.000 EA |
| HW1001A25 | LOCKWASHER 1/4, ZINC PLT .493 OD, .255 I | 4.000 EA |
| 09EP1100C44P | MACH'D PRIMED FREP, SPL DRAINS | 1.000 EA |
| HA4044A00 | PLUG,PIPE 1/8 NPT PLASTIC SQUARE HEAD | 2.000 EA |
| WD1000B16 | T&B CX70TN TERMINAL | 1.000 EA |
| 10XN2520K06 | 1/4-20 X 3/8" HX HD SCREWGRADE 5, ZINC P | 1.000 EA |
| HW1001A25 | LOCKWASHER 1/4, ZINC PLT .493 OD, .255 I | 1.000 EA |
| 10XN3816K28 | 3/8-16 X 1.75 HEX HD CAP SCREW, GRADE 5 | 4.000 EA |
| HW1001A38 | LOCKWASHER 3/8, ZINC PLT .688 OD, .382 I | 4.000 EA |
| HW4600B53 | SEAL 1.688 X 2.275 X 0.312 SINGLE LIP DB | 1.000 EA |
| HA7205 | "L" SHAPE LIFTING LUG FOR 37,39 & 40 FRA | 2.000 EA |
| HW4600B44 | V-RING SLINGER 1.500 X 1.810 X .28 VITON | 1.000 EA |
| HW4600G53 | DOME SLINGER, 5.438 OD X 1.620/1.562 ID | 1.000 EA |
| HW5100A08 | W3118-035 WVY WSHR (WB) | 1.000 EA |
| 09EP1101A162P | SPL PU EP,MODEL 309 - 309 BRG W/EPOXY PR | 1.000 EA |
| 10XN3816K24 | 3/8-16 X 1.50 HEX HD CAP SCREW, GRADE 5 | 4.000 EA |
| HW1001A38 | LOCKWASHER 3/8, ZINC PLT .688 OD, .382 I | 4.000 EA |
| 10XN2520K36 | 1/4-20 X 2.25" HX HD SCRWGRADE 5, ZINC P | 4.000 EA |
| 12CB1503P | CONDUIT BOX LID, CAST W/EPOXY PRIMER | 1.000 EA |
| 12GS1002 | GASKET, CONDUIT BOX LID, NEOP | 1.000 EA |

| Parts List (continued) | | |
|------------------------|---|----------|
| Part Number | Description | Quantity |
| 10XN3118K16 | 5/16-18 X 1' GRADE #5, STL, ZINC PLATE | 2.000 EA |
| HW1001A31 | LOCKWASHER 5/16, ZINC PLT.591 OD, .319 I | 2.000 EA |
| HW2501G25 | KEY, 3/8 SQ X 2.875 | 1.000 EA |
| MJ5001A14 | DYNAPRO SEALANT, CP MTR VC#2508050 (603 | 0.023 EA |
| MJ5001A27 | 32220KN GRAY SEALER *MIN BUY 4 QTS=1GAL | 0.031 QT |
| MJ5002A01 | SILICON RUBBER SEALANT, 732CL 10.3 OZ TU | 0.025 EA |
| LB1115N | LABEL,LIFTING DEVICE (ON ROLLS) | 1.000 EA |
| LB1002N | LABEL,MARINE DUTY (ON ROLLS) | 1.000 EA |
| LB1182 | WARNING LABEL FOR MOTORS WITH EYENUTS | 2.000 EA |
| HA4054 | SHORT T-DRAIN FITTING, .125" N.P.T. | 3.000 EA |
| MG1025G05 | WILKOFASST, 789.227, MED. GRAY CHAR. MET. | 0.050 GA |
| MJ1000A02 | GREASE, POLYREX EM EXXON (USe 4824-15A) | 0.080 LB |
| HA4054 | SHORT T-DRAIN FITTING, .125" N.P.T. | 3.000 EA |
| 85XU0407S04 | 4X1/4 U DRIVE PIN STAINLESS | 2.000 EA |
| LC0005E02 | SPL CONN.DIA./WARN.LABEL(LC0005/LB1119) | 1.000 EA |
| NP1258E | SS CP UL CSA CC | 1.000 EA |
| 40PA1005 | PACKAGING GROUP, 09 STD | 1.000 EA |
| MN416A01 | TAG-INSTAL-MAINT no wire (1200/bx) 5/18 | 1.000 EA |

AC Induction Motor Performance Data

Record # 52111 - Typical performance - not guaranteed values

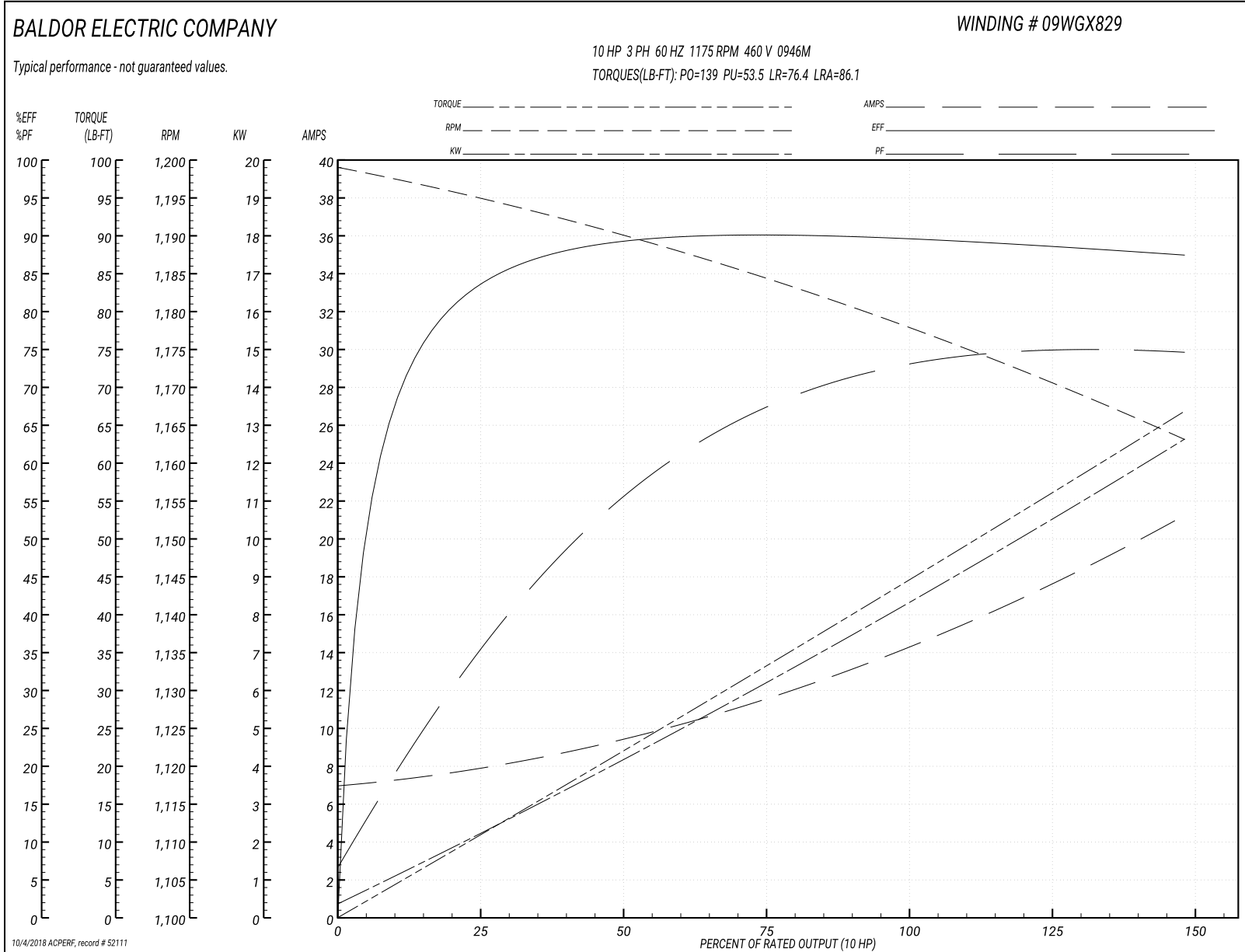
| | | |
|-------------------------------|--------------------|------------------------|
| Winding: 09WGX829-R030 | Type: 0946M | Enclosure: TEAO |
|-------------------------------|--------------------|------------------------|

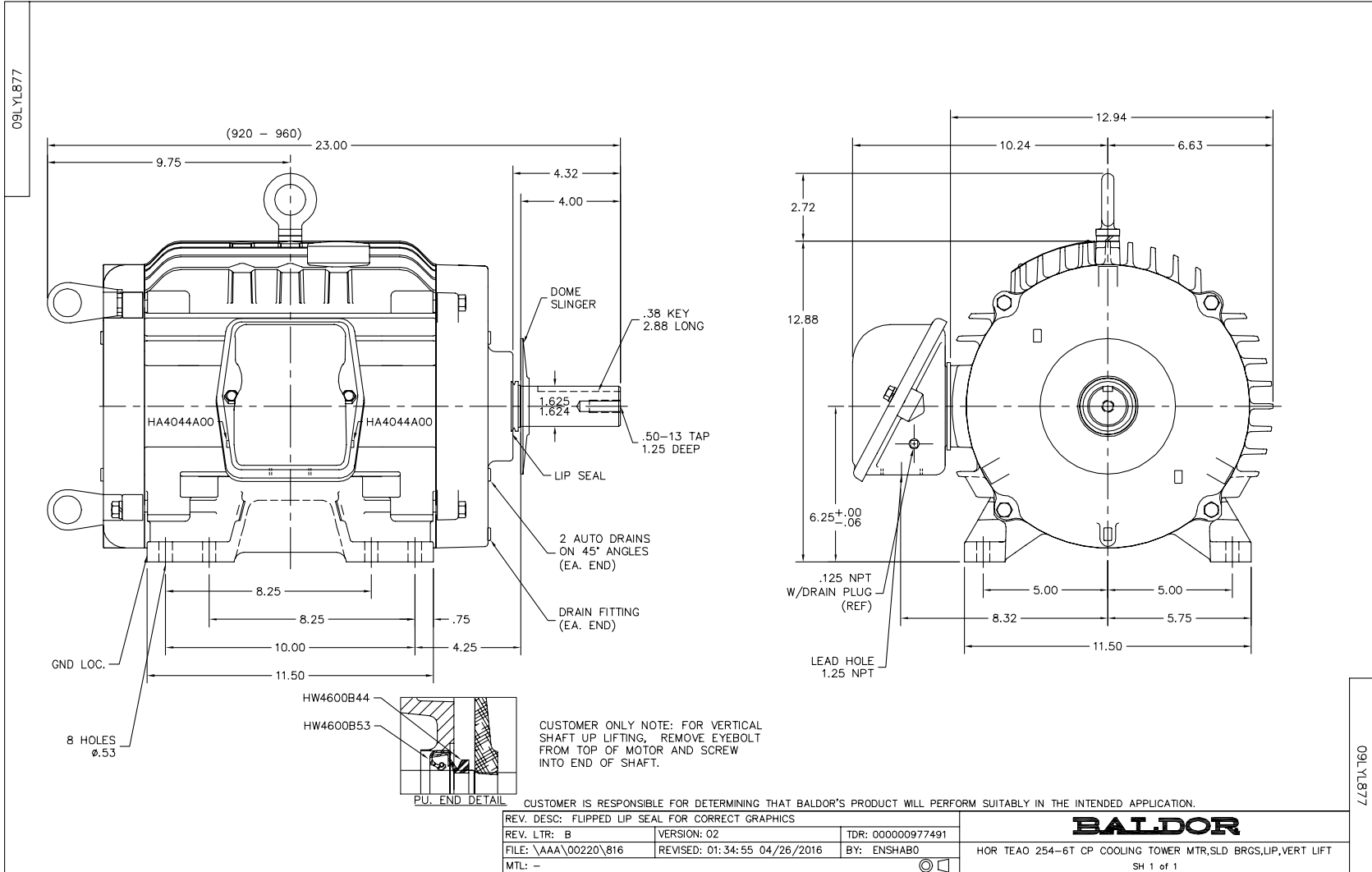
| Nameplate Data | | | | 460 V, 60 Hz: High Voltage Connection | |
|-----------------------|--------------|--------------|----|--|------------------------|
| Rated Output (HP) | 10 AIR OVER | | | Full Load Torque | 44.6 LB-FT |
| Volts | 230/460 | | | Start Configuration | direct on line |
| Full Load Amps | 28.8/14.4 | | | Breakdown Torque | 139 LB-FT |
| R.P.M. | 1175 | | | Pull-up Torque | 53.5 LB-FT |
| Hz | 60 | Phase | 3 | Locked-rotor Torque | 76.4 LB-FT |
| NEMA Design Code | B | KVA Code | H | Starting Current | 86.1 A |
| Service Factor (S.F.) | 1.15 | | | No-load Current | 7.04 A |
| NEMA Nom. Eff. | 89.5 | Power Factor | 73 | Line-line Res. @ 25°C | 0.83 Ω |
| Rating - Duty | 40C AMB-CONT | | | Temp. Rise @ Rated Load | 50°C |
| S.F. Amps | | | | Temp. Rise @ S.F. Load | 67°C |
| | | | | Locked-rotor Power Factor | 26 |
| | | | | Rotor inertia | 3.7 LB-FT ² |

Load Characteristics 460 V, 60 Hz, 10 HP

| % of Rated Load | 25 | 50 | 75 | 100 | 125 | 150 | S.F. |
|-----------------|------|------|-------|-------|-------|------|-------|
| Power Factor | 36 | 56 | 67 | 72 | 75 | 75 | 74 |
| Efficiency | 82.9 | 88.6 | 89.9 | 89.9 | 89.2 | 87.1 | 89.5 |
| Speed | 1195 | 1190 | 1184 | 1178 | 1171 | 1163 | 1174 |
| Line amperes | 7.82 | 9.42 | 11.61 | 14.38 | 17.56 | 21.2 | 16.29 |

Performance Graph at 460V, 60Hz, 10.0HP Typical performance - Not guaranteed values





CD0005



LOW VOLTAGE
(2Y)



LINE

HIGH VOLTAGE
(1Y)



LINE

NOTES:

1. INTERCHANGE ANY TWO LINE LEADS TO REVERSE ROTATION.
2. OPTIONAL THERMOSTATS ARE PROVIDED WHEN SPECIFIED.
3. ACTUAL NUMBER OF INTERNAL PARALLEL CIRCUITS MAY BE A MULTIPLE OF THOSE SHOWN ABOVE.
4. LEAD COLORS ARE OPTIONAL. LEADS MUST ALWAYS BE NUMBERED AS SHOWN.

REV. DESC: REVISE TO SHOW OPTIONAL COLORS

REV. LTR: E BY: JLP

REVISED: 01/19/99 10:15

TDR: 0171435

90000

FILE: AAA00005140

MDL: -

MTL: -

BALDOR ELECTRIC Co.

3PH, DV, 9 LEADS

CD0005

Marketing maintained PDF of MN416:

<http://www.baldor.com/support/Literature/Load.ashx/MN416?ManNumber=MN416>