

**BALDOR® • RELIANCE** 

**Product Information Packet**

**D2025P**

**25HP/1750-2300RPM/DC/NEMA 288AT**

Part Detail							
Revision:	D	Status:	PRD/A	Change #:		Proprietary:	No
Type:	DC	Prod. Type:		Elec. Spec:		CD Diagram:	
Enclosure:		Mfg Plant:		Mech. Spec:		Layout:	876-2
Frame:		Mounting:	F1	Poles:	00	Created Date:	04-09-2015
Base:		Rotation:	R	Insulation:		Eff. Date:	10-28-2016
Field Type:		Literature:		Elec. Diagram:		Replaced By:	

Specs			
Frame:	288AT		
Frame Material:	Steel		
Agency Approvals:	CSA		
Base Indicator:	Rigid		
Bearing Grease Type:	Polyrex EM (-20F +300F)		
Drip Cover:	No Drip Cover		
Feedback Device:	NO FEEDBACK		
Heater Indicator:	No Heater		
Insulation Class:	F		
Lifting Lugs:	Standard Lifting Lugs		
Mounting Arrangement:	F1		
Shaft Extension Location:	Pulley End		
Shaft Ground Indicator:	No Shaft Grounding		
Shaft Slinger Indicator:	No Slinger		
Motor Standards:	NEMA		

Nameplate NP1734											
CAT.NO.	D2025P			MODEL	T28R8001						
HP	25	RPM	1750/ 2300		FRAME	0288AT					
ARM V	240	ARM A	89.20		WOUND	STR. SHUNT					
FLD V	300	FLD A	1.49-1.94/1.26-.97								
CONN		OHMS	129.3		CL	F					
ENCL	DPFG	DUTY	CONT		MX AMB	40					
P CODE	D	CTSR			SER.F.	1.0					
S/N			E/S	K0065A A							
	FLD. DATA FOR HIGH VOLTS										
	FLD. VOLTS 150/300										
O.D.E. BRG.	6209	D.E. BRG.	6210		BRUSH	28610-1				QTY	4

Parts List		
Part Number	Description	Quantity
SA297079	SA T28R8001	1.000 EA
AA016130	AA T28R8001	1.000 EA
NP1734	NPL,BALDOR DC MTR ALUMINUM	1.000 EA
15209	LABEL CONNECTIONS & TERMINAL MARKIN	1.000 EA
435360012	MWIRE 6 GA 004824-004BV	29.000 LB
15555-894	KEY 1/2 SQ	1.000 EA
611954052A	BAND SHL	1.000 EA
HA1085	ROTOR WASHER FOR 280 FRAME	1.000 EA
HA1085	ROTOR WASHER FOR 280 FRAME	1.000 EA
435300026	.0720 (#13) WIRE 004824-004BV	16.000 LB
15094	DISHED LOCKWASHER .332 ID, .865 OD	2.000 EA
28026-1	FAN MACHINED FRAME 280 SERIES	1.000 EA
28347	BALANCE RING, H.R.P&O STL	2.000 EA
609848007A	NOMEX WASHER, ROUND DC 2POLE ODE	1.000 EA
032018016DK	HHCS 1/2-13X2L PLTD.	4.000 EA
032018016DK	HHCS 1/2-13X2L PLTD.	4.000 EA
046001026F	THERMOSTAT	1.000 EA
28037-1	INTERPOLE STACK FRAME 288	2.000 EA
424504011BB	FT MILL 288 SHIM PACKA	1.000 EA
424508201A	ROUND 288 DC FRAME INSUL BM	1.000 EA
032018038CK	HHCS 3/8X4-3/4 PLTD.	4.000 EA
035000001A	ALFTG 1/8" 1610-BL	1.000 EA
28041-1	FE BRKT MACH FR280 FOR LOCKED C.E	1.000 EA
HW4500A17	317400 ALEMITE GREASE RELIEF	1.000 EA

Parts List (continued)		
Part Number	Description	Quantity
HW5100A10	W3519-038 WAVY WASHER, FOR 6308 BRG	1.000 EA
15599-37	DRIVE SCR,#10 X.37 TYPE UPLATED STEEL	6.000 EA
004824015A	GREASE POLYREX EM	0.300 LB
032130010CA	3/8-16 X 1.25 HSHCS	4.000 EA
032130018BA	HSHCS 2-1/4" LG M2	4.000 EA
035000001A	ALFTG 1/8" 1610-BL	1.000 EA
28040-3	CE BRKT MACH FR 280 LOCKED C.E. BR	1.000 EA
HA4048A01	DRIVE-IN PLUG,.50"EXPAN.PLUG,	2.000 EA
HW4500A17	317400 ALEMITE GREASE RELIEF	1.000 EA
032018004BK	HHCS 5/16-18X1/2 PLATED	2.000 EA
15094	DISHED LOCKWASHER .332 ID, .865 OD	2.000 EA
28610-1SP	BRUSH,280/320FR. E-41HELWIG,NEW DESIGN	4.000 EA
BP5228R02	BRUSH ROCKER ASSY, FR 28/32 2 BR/STUD	1.000 EA
032018004AK	HHCS 1/4-20X1/2 PLATED	2.000 EA
032018004BK	HHCS 5/16-18X1/2 PLATED	28.000 EA
032018006DK	HHCS 1/2-13X3/4 PLATED	4.000 EA
032018008BK	HHCS 5/16-18X1L PLATED	4.000 EA
15021-1	ACCESSORY FACE COVER FRAME 180-500 SERIE	1.000 EA
15024-3	TERM.BOX BASE FR-280 DUREX P/N:3CT	1.000 EA
15024-4	TERM.BOX CVR. FR-28,32,36DUREX P/N:D618	1.000 EA
15024-5	GASKET, T.BOX COVER	1.000 EA
15024-7	GASKET,T/BOX FR. 280/3201/8" THK.,MUELL	1.000 EA
150449-31	GRD STUD ARG .312DIA STUD	1.000 EA
15115	TERM BOX HOLE COVER FRAME 280 & 320	1.000 EA

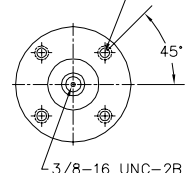
Product Information Packet: D2025P - 25HP/1750-2300RPM/DC/NEMA 288AT

28020-2	ACCESS COVER FRAME 28 SERIES	1.000 EA
28021-1	GASKET,CVR,FAN END,FR.2803/32 THK DC205(	3.000 EA
28021-2	GASKET COVER COM END FRAME 280 SERIES	3.000 EA
28022-1	VENT GUARD,WITH LOUVERS	1.000 EA
28045-1	SIDE VENT CVR W/LOUVERS 280 SERIES	3.000 EA
28045-2	SIDE VENT COVER W/LOUVERSFR.280 SERIES	2.000 EA
MG1025G05	WILKOFAS, 789.227, MED. GRAY CHAR. MET.	0.100 GA
034180020GA	KEY 1/2X1/2X2-1/2 L	1.000 EA
PA1100	PACK FOR #1 SKID; CUSTOM	1.000 EA
MG5047	VARNISH 004824-001HM	0.200 GA
041009038E	INT. LEAD LUG	2.000 EA
041009038A	TERMINAL LUG WIRE 22-16	4.000 EA
482413015Y	#15 SLVG	6.000 FT
482413006Y	#6 SLEEVING (GREEN)	6.000 FT

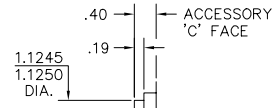
<b>Accessories</b>		
<b>Part Number</b>	<b>Description</b>	<b>Multiplier</b>
93EP5000A02	C-FACE CONVERSION KIT FOR STOCK MTR,FR 2	

876-2

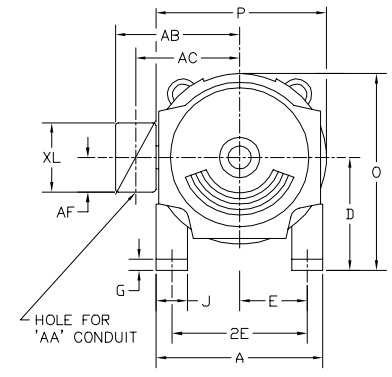
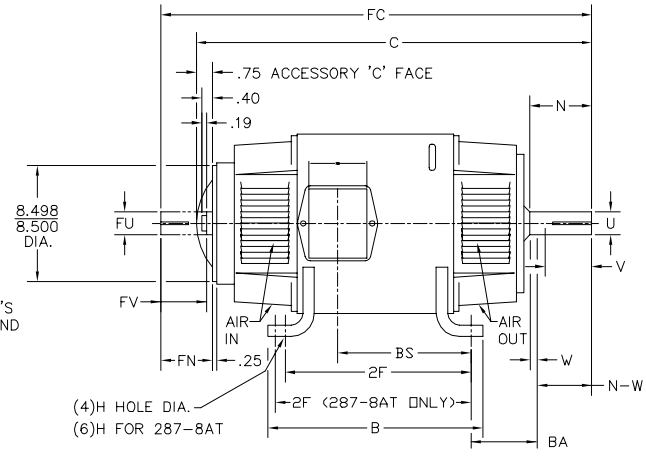
1/2-13UNC-2B THD X 1.00 DEEP  
4-HOLES EQUALLY SPACED  
ON A 7.250 DIA. B.C.



3/8-16 UNC-2B THD'S  
.88 DEEP IN SHAFT END



STANDARD COMM END  
FOR SINGLE SHAFT EXTENSION



FRAME	FOOT MOUNTING				D.E. SHAFT EXTENSION							DRIVE KEY		ACC SHAFT EXTENSION			ACC KEY		FRAME						
	BA	E	2F	G	H	J	N	N-W	U	V	W	KEY-SQ.	KEY-LONG	FN	FU	FV	KEY-SQ.	KEY-LONG	A	B	C	FC	D	O	P
287AT	4.75	5.50	12.50	.69	.531	2.50	3.91	3.75	1.875	3.50 <sup>3</sup>	.16	.500	2.50	3.44	1.625	3.19	.375	2.44	13.81	14.13	31.00	33.71	7.00 <sup>2</sup>	13.88	13.75
287-8AT	4.75	5.50	12.50 & 14.00	.69	.531	2.50	3.91	3.75	1.875	3.50 <sup>3</sup>	.16	.500	2.50	3.44	1.625	3.19	.375	2.44	13.81	15.62	31.00	33.71	7.00 <sup>2</sup>	13.88	13.75
288AT	4.75	5.50	14.00	.69	.531	2.50	3.91	3.75	1.875	3.50 <sup>3</sup>	.16	.500	2.50	3.44	1.625	3.19	.375	2.44	13.81	15.62	32.75	35.46	7.00 <sup>2</sup>	13.88	13.75
2810AT	4.75	5.50	18.00	.69	.531	2.50	3.91	3.75	1.875	3.50 <sup>3</sup>	.16	.500	2.50	3.44	1.625	3.19	.375	2.44	13.81	19.62	36.75	39.46	7.00 <sup>2</sup>	13.88	13.75
2811AT	4.75	5.50	20.00	.69	.531	2.50	3.91	3.75	1.875	3.50 <sup>3</sup>	.16	.500	2.50	3.44	1.625	3.19	.375	2.44	13.81	21.62	40.68	43.84	7.00 <sup>2</sup>	13.88	13.75
2813AT	4.75	5.50	25.00	.69	.531	2.50	3.91	3.75	1.875	3.50 <sup>3</sup>	.16	.500	2.50	3.44	1.625	3.19	.375	2.44	13.81	26.62	44.62	47.84	7.00 <sup>2</sup>	13.88	13.75

FRAME	CONDUIT BOX							ARM APPROX. Wt <sup>2</sup> LBS.FT. <sup>2</sup>	APPROXIMATE WEIGHT
	AA	AB	AC	AF	BS	XL	XN		
287AT	1 1/4	11.88	9.25	5.00	10.89	7.88	5.25	4.67	506 <sup>5</sup>
287-8AT	1 1/4	11.88	9.25	5.00	10.89	7.88	5.25	4.67	506 <sup>5</sup>
288AT	1 1/4	11.88	9.25	5.00	12.64	7.88	5.25	5.36	566 <sup>5</sup>
2810AT	1 1/4	11.88	9.25	5.00	16.64	7.88	5.25	6.80	726 <sup>5</sup>
2811AT	1 1/4	11.88	9.25	5.00	19.14	7.88	5.25	7.62	751 <sup>5</sup>
2813AT	1 1/4	11.88	9.25	5.00	23.64	7.88	5.25	9.40	796 <sup>5</sup>

- 1) SHAFT DIAMETERS TO 1.500 TOLERANCE +.0000 -.0005  
SHAFT DIAMETERS ABOVE 1.500 TOLERANCE +.0000 -.0010  
SHAFT DIAMETERS TO 1.625 RUNOUT .002 T.I.R. MAX.  
SHAFT DIAMETERS ABOVE 1.625 RUNOUT .003 T.I.R. MAX.
- 2) 'D' DIMENSION TOLERANCE +.000 - .060
- 3) 'V' DIMENSION IS MAX. HUB LENGTH ON SHAFT
- 4) CONDUIT BOX CAN BE ROTATED IN 90° STEPS ON ITS OWN AXIS.
- 5) TOTAL WEIGHT OF MOTOR.
- 6) ALL DIMENSIONS NOT NOTED ARE NOMINAL DIMENSIONS CONSULT FACTORY FOR TOLERANCES.

FOR F1 OR F2 CONDUIT BOX LOCATION SEE SALES ORDER

876-2

CUSTOMER IS RESPONSIBLE FOR DETERMINING THAT BALDOR'S PRODUCT WILL PERFORM SUITABLY IN THE INTENDED APPLICATION.

REV. DESC: CHANGE TO LAB OFFICE 015	VERSION: 05	TDR: 000000951746
REV. LTR: G	REvised: 04:29:16 11/03/2015	BY: USPABLO
FILE: \RSN\00031\749		
MTL: -		

**BALDOR**  
DIM SHEET 287AT-2813AT,DPFG  
SH 1 of 1



Marketing maintained PDF of MN605:

<http://www.baldor.com/support/Literature/Load.ashx/MN605?ManNumber=MN605>