

BALDOR® • RELIANCE 

Product Information Packet

D2040P-BV

40HP, 1750/2100RPM, DC, 328AT, DPBV, F1

Part Detail							
Revision:	G	Status:	PRD/A	Change #:		Proprietary:	No
Type:	DC	Prod. Type:		Elec. Spec:		CD Diagram:	
Enclosure:		Mfg Plant:		Mech. Spec:		Layout:	1336-4
Frame:		Mounting:	F1	Poles:	00	Created Date:	04-09-2015
Base:		Rotation:	R	Insulation:		Eff. Date:	10-28-2016
Field Type:		Literature:		Elec. Diagram:		Replaced By:	

Specs			
Frame:	328AT		
Frame Material:	Steel		
Agency Approvals:	CSA		
Base Indicator:	Rigid		
Bearing Grease Type:	Polyrex EM (-20F +300F)		
Drip Cover:	No Drip Cover		
Feedback Device:	NO FEEDBACK		
Heater Indicator:	No Heater		
Insulation Class:	F		
Lifting Lugs:	Standard Lifting Lugs		
Mounting Arrangement:	F1		
Shaft Extension Location:	Pulley End		
Shaft Ground Indicator:	No Shaft Grounding		
Shaft Slinger Indicator:	No Slinger		
Motor Standards:	NEMA		

Nameplate NP1734										
CAT.NO.	D2040P-BV			MODEL	T32R8003					
HP	40	RPM	1750/ 2100		FRAME	0328AT				
ARM V	240	ARM A	138.00		WOUND	STR. SHUNT				
FLD V	300	FLD A	1.32-2.00/2.17-1.00							
CONN		OHMS	145.6		CL	F				
ENCL	DPBV	DUTY	CONT		MX AMB	40				
P CODE	D	CTSR			SER.F.	1.0				
S/N			E/S	K0080A B						
	FLD. DATA FOR HIGH VOLTS									
	FLD. VOLTS 150/300									
O.D.E. BRG.	6210	D.E. BRG.	6211	BRUSH	28610-1				QTY	4

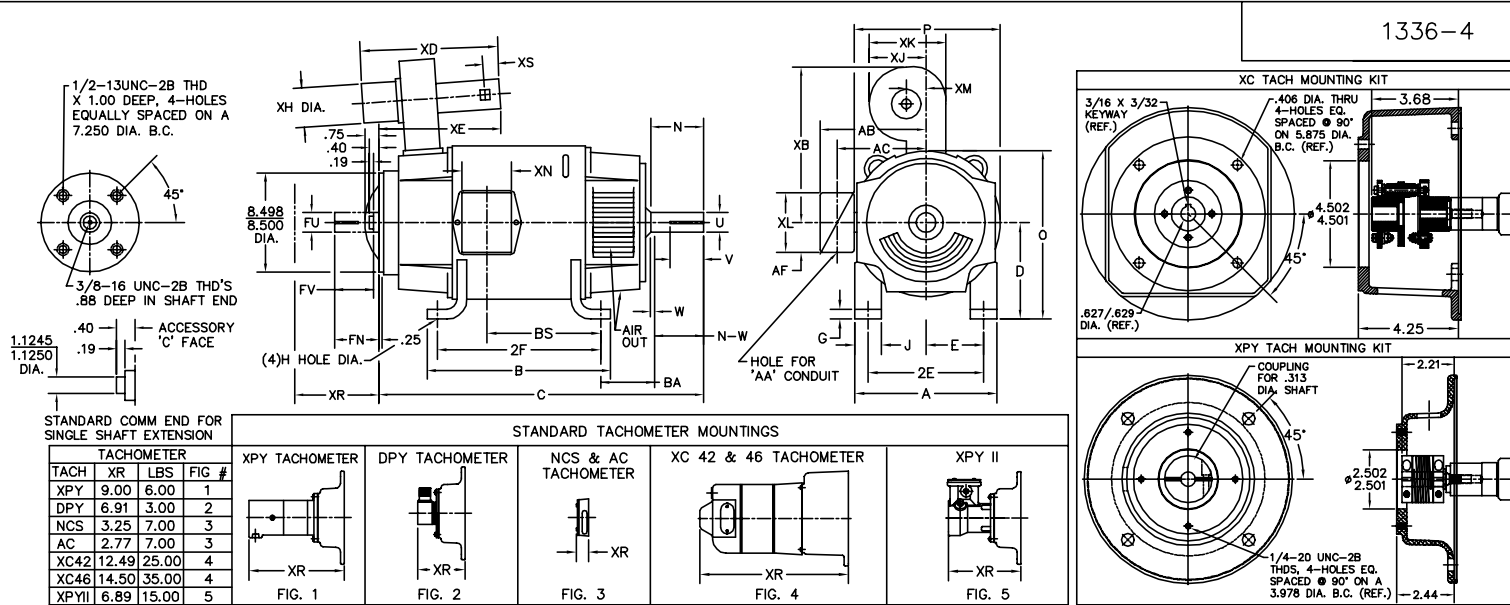
Parts List		
Part Number	Description	Quantity
SA297047	SA T32R8003	1.000 EA
AA016098	AA T32R8003	1.000 EA
150247	CAUTION LABEL,BLWR WHEEL ROTATION,MYLAR	1.000 EA
NP1734	NPL,BALDOR DC MTR ALUMINUM	1.000 EA
15209	LABEL CONNECTIONS & TERMINAL MARKIN	1.000 EA
15555-994	KEY 1/2 SQ	1.000 EA
32016-1	ROTOR WASHER, FR 329, SPL W/409 SLOT LAM	1.000 EA
32016-1	ROTOR WASHER, FR 329, SPL W/409 SLOT LAM	1.000 EA
32659	COMM HUB MACH-FR328, 1 OR 2 BR	1.000 EA
611956007A	(018) BANDSHELF 320	1.000 EA
15094	DISHED LOCKWASHER .332 ID, .865 OD	2.000 EA
32024-1	FAN MACH,STD,320 SERIES INTERNAL FAN	1.000 EA
609848007A	NOMEX WASHER, ROUND DC 2POLE ODE	1.000 EA
HA1086	BALANCING RING FOR 320 FRAME	2.000 EA
032018018DK	HHCS 1/2-13X2-1/4 PLTD.	4.000 EA
032018018DK	HHCS 1/2-13X2-1/4 PLTD.	4.000 EA
046001026F	THERMOSTAT	1.000 EA
32035-1	INTERPOLE STACK	2.000 EA
424504013DD	FT. MILL 320 SHIM PACK	1.000 EA
424508251A	ROUND 328 DC FRAME INSUL BM	1.000 EA
032018040DK	HHCS 1/2-13X5L PLATED	4.000 EA
035000001A	ALFTG 1/8" 1610-BL	1.000 EA
15033-11	WASHER WAVE SPR #042 ASSOC. SPR. #W3917-	1.000 EA
32029-10	FE BRKT,STD. LOCKED C/E 320AT	1.000 EA

Parts List (continued)		
Part Number	Description	Quantity
HW4500A17	317400 ALEMITE GREASE RELIEF	1.000 EA
032018004AK	HHCS 1/4-20X1/2 PLATED	3.000 EA
032018004BK	HHCS 5/16-18X1/2 PLATED	4.000 EA
10052-2	LM6 BLOWER ADAPTER,FR 320	1.000 EA
FLT6320	LM6 FILTER KIT ASSEMBLY	1.000 EA
10162	LM6 BLOWER ASSEMBLY	1.000 EA
15599-37	DRIVE SCR,#10 X.37 TYPE UPLATED STEEL	6.000 EA
XY3118A12	5/16-18 HEX NUT DIRECTIONAL SERRATION	4.000 EA
004824015A	GREASE POLYREX EM	0.400 LB
032130010DA	1/2-13 X 1.25 HSHCS	4.000 EA
032130016BA	HSHCS OUTER CAP LE	4.000 EA
035000001A	ALFTG 1/8" 1610-BL	1.000 EA
32031-5	CE BRKT MACH FR 320 FOR LOCKED C.E	1.000 EA
HA4048A01	DRIVE-IN PLUG,.50"EXPAN.PLUG,	2.000 EA
HW4500A17	317400 ALEMITE GREASE RELIEF	1.000 EA
032018004BK	HHCS 5/16-18X1/2 PLATED	2.000 EA
15094	DISHED LOCKWASHER .332 ID, .865 OD	2.000 EA
28610-1SP	BRUSH,280/320FR. E-41HELWIG,NEW DESIGN	4.000 EA
BP5228R02	BRUSH ROCKER ASSY, FR 28/32 2 BR/STUD	1.000 EA
032018004AK	HHCS 1/4-20X1/2 PLATED	2.000 EA
032018004BK	HHCS 5/16-18X1/2 PLATED	28.000 EA
032018006DK	HHCS 1/2-13X3/4 PLATED	4.000 EA
032018004BK	HHCS 5/16-18X1/2 PLATED	3.000 EA
15021-1	ACCESSORY FACE COVER FRAME 180-500 SERIE	1.000 EA

Product Information Packet: D2040P-BV - 40HP,1750/2100RPM,DC,328AT,DPBV,F1

15024-4	TERM.BOX CVR. FR-28,32,36DUREX P/N:D618	1.000 EA
15024-5	GASKET, T.BOX COVER	1.000 EA
15024-6	TERM.BOX BASE FR-320, DUREX P/N:3SP	1.000 EA
15024-7	GASKET,T/BOX FR. 280/3201/8" THK.,MUELL	2.000 EA
150449-31	GRD STUD ARG .312DIA STUD	1.000 EA
15115	TERM BOX HOLE COVER FRAME 280 & 320	1.000 EA
32019-2	ACCESS COVER FRAME 32 SERIES	1.000 EA
32019-2	ACCESS COVER FRAME 32 SERIES	2.000 EA
32020-1	GASKET, COVER, FAN END	3.000 EA
32020-2	GASKET COVER COM END FRAME 320 SERIES	3.000 EA
32023-1	LOUVERED SMILE COVER, FR 320	1.000 EA
32046-1	VENT COVER FRAME 32 SERIES	3.000 EA
MG1025G05	WILKOFAS, 789.227, MED. GRAY CHAR. MET.	0.200 GA
034180025GA	KEY,DE	1.000 EA
PK5946A12	EXPORT CRATE, 36X48X32-HT, HD/W/TOP	1.000 EA
MG5047	VARNISH 004824-001HM	0.200 GA
041009029A	#2 BUTT CONNECTOR 350 J	2.000 EA
041009029B	CONNECTOR, RTD	4.000 EA
482413015Y	#15 SLVG	6.000 FT
482413004Y	#4 SLEEVING (GREEN) PER FT	6.000 FT

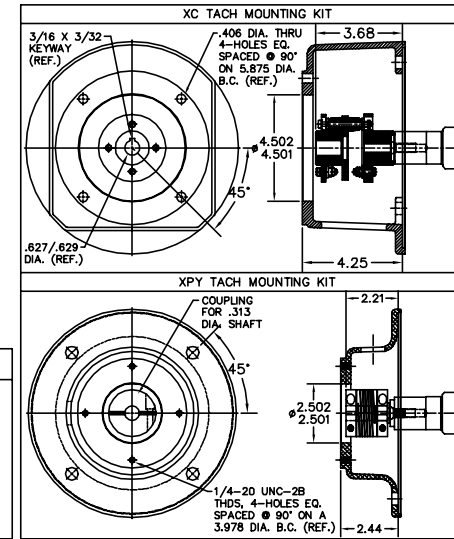
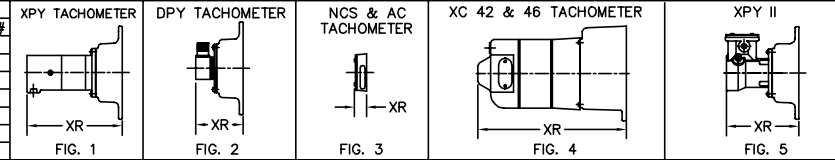
Accessories		
Part Number	Description	Multiplier
94EP5000A02	C-FACE CONVERSION KIT FOR STOCK MTR,FR 3	P1



STANDARD COMM END FOR SINGLE SHAFT EXTENSION

TACHOMETER			
TACH	XR	LBS	FIG #
XPY	9.00	6.00	1
DPY	6.91	3.00	2
NCS	3.25	7.00	3
AC	2.77	7.00	3
XC42	12.49	25.00	4
XC46	14.50	35.00	4
XPYII	6.89	15.00	5

STANDARD TACHOMETER MOUNTINGS



FRAME	FOOT MOUNTING										D.E. SHAFT EXTENSION					DRIVE KEY			ACC SHAFT EXTENSION			ACC KEY		FRAME					
	BA	E	2F	G	H	J	N	N-W	U	V	W	KEY-SQ.	KEY-LONG	FN	FU	FV	KEY-SQ.	KEY-LONG	A	B	C	D	O	P					
327AT	5.25	6.25	14.00	.81	.656	3.00	4.40	4.25	2.125	4.00 ³	.15	.500	3.12	3.94	1.875	3.69	.500	2.81	15.88	15.75	32.75	8.00 ²	15.94	15.88					
328AT	5.25	6.25	16.00	.81	.656	3.00	4.40	4.25	2.125	4.00 ³	.15	.500	3.12	3.94	1.875	3.69	.500	2.81	15.88	17.75	34.63	8.00 ²	15.94	15.88					
329AT	5.25	6.25	18.00	.81	.656	3.00	4.40	4.25	2.125	4.00 ³	.15	.500	3.12	3.94	1.875	3.69	.500	2.81	15.88	19.75	36.63	8.00 ²	15.94	15.88					
365AT	5.88	7.00	12.25	.81	.813	3.25	4.94	4.75	2.375	4.50 ³	.19	.625	3.50	4.62	2.125	4.37	.500	3.13	17.75	13.75	32.94	9.00 ²	17.94	17.88					
366AT	5.88	7.00	14.00	.81	.813	3.25	4.94	4.75	2.375	4.50 ³	.19	.625	3.50	4.62	2.125	4.37	.500	3.13	17.75	15.50	35.13	9.00 ²	17.94	17.88					
368AT	5.88	7.00	18.00	.81	.813	3.25	4.94	4.75	2.375	4.50 ³	.19	.625	3.50	4.62	2.125	4.37	.500	3.13	17.75	19.50	38.13	9.00 ²	17.94	17.88					
3610AT	5.88	7.00	22.00	.81	.813	3.25	4.94	4.75	2.375	4.50 ³	.19	.625	3.50	4.62	2.125	4.37	.500	3.13	17.75	23.50	41.45	9.00 ²	17.94	17.88					
3612AT	5.88	7.00	28.00	.81	.813	3.25	4.94	4.75	2.375	4.50 ³	.19	.625	3.50	4.62	2.125	4.37	.500	3.13	17.75	29.50	45.56	9.00 ²	17.94	17.88					

FRAME	CONDUIT BOX					BLOWER										ARM APPROX. WK ² LBS.FT. ²	APPROXIMATE WEIGHT	
	AA	AB	AC	AF	BS	XL	XN	SIZE	XB	XD	XE	XH	XM	XJ	XK			XS
327AT	2	12.94	10.32	5.00	11.81	7.88	5.25	LM6	19.13	26.38	17.38	10.25	4.19	9.44	11.50	3.75	8.45	738 ⁵
328AT	2	12.94	10.32	5.00	13.68	7.88	5.25	LM6	19.13	26.38	17.38	10.25	4.19	9.44	11.50	3.75	9.67	813 ⁵
329AT	2	12.94	10.32	5.00	15.68	7.88	5.25	LM6	19.13	26.38	17.38	10.25	4.19	9.44	11.50	3.75	10.97	922 ⁵
365AT	2 1/2	14.06	11.38	5.00	9.06	7.88	5.25	LM6	18.88	26.38	18.44	10.25	5.69	10.95	11.50	3.75	15.61	803 ⁵
366AT	2 1/2	14.06	11.38	5.00	11.25	7.88	5.25	LM6	18.88	26.38	18.44	10.25	5.69	10.95	11.50	3.75	18.27	913 ⁵
368AT	2 1/2	14.06	11.38	5.00	14.25	7.88	5.25	LM6	18.88	26.38	18.44	10.25	5.69	10.95	11.50	3.75	22.21	1073 ⁵
3610AT	3	16.86	13.09	6.53	18.25	11.63	7.76	LM9	25.50	28.31	20.94	10.75	5.50	12.38	15.25	3.75	28.00	1109 ⁵
3612AT	3	16.86	13.09	6.53	24.25	11.63	7.76	LM9	25.50	28.31	20.94	10.75	5.50	12.38	15.25	3.75	31.60	1145 ⁵

- 1) SHAFT DIAMETERS TO 1.500 TOLERANCE +.0000 - .0005
SHAFT DIAMETERS ABOVE 1.500 TOLERANCE +.0000 - .0010
SHAFT DIAMETERS TO 1.625 RUNOUT .002 T.I.R. MAX.
SHAFT DIAMETERS ABOVE 1.625 RUNOUT .003 T.I.R. MAX.
- 2) 'D' DIMENSION TOLERANCE +.000 - .060
- 3) 'V' DIMENSION IS MAX. HUB LENGTH ON SHAFT
- 4) CONDUIT BOX CAN BE ROTATED IN 90° STEPS ON ITS OWN AXIS.
- 5) TOTAL WEIGHT OF MOTOR AND BLOWER LESS TACH WEIGHT.
- 6) ALL DIMENSIONS NOT NOTED ARE NOMINAL DIMENSIONS CONSULT FACTORY FOR TOLERANCES.

FOR F1 OR F2 CONDUIT BOX LOCATION SEE SALES ORDER

CUSTOMER IS RESPONSIBLE FOR DETERMINING THAT BALDOR'S PRODUCT WILL PERFORM SUITABLY IN THE INTENDED APPLICATION.

REV. DESC: REV. "D" DIM TO +.000 - .060 ONLY	VERSION: 01	TDR: 000000752448
REV. LTR: G		
FILE: \RGG\00019\490		REVISED: 01:55:17 06/19/2012
MTL: -		BY: RGGNAS

BALDOR

DIM SHEET: 327-3612AT,DPBV,W/TACH

SH 1 of 1

1336-4

Marketing maintained PDF of MN605:

<http://www.baldor.com/support/Literature/Load.ashx/MN605?ManNumber=MN605>