

BALDOR® • RELIANCE 

Product Information Packet

D5007R

7.5 1750 DPG C1811ATZ STRT SHUNT

Part Detail							
Revision:	G	Status:	PRD/A	Change #:		Proprietary:	No
Type:	DC	Prod. Type:		Elec. Spec:		CD Diagram:	
Enclosure:		Mfg Plant:		Mech. Spec:		Layout:	609980-001
Frame:		Mounting:		Poles:	00	Created Date:	02-17-2014
Base:		Rotation:	R	Insulation:		Eff. Date:	10-28-2016
Field Type:		Literature:		Elec. Diagram:		Replaced By:	

Specs			
Frame:	C1811ATZ		
Frame Material:	Exposed Laminations		
Agency Approvals:	CCSA US		
Base Indicator:	Rigid		
Bearing Grease Type:	Polyrex EM (-20F +300F)		
Drip Cover:	No Drip Cover		
Feedback Device:	NO FEEDBACK		
Frame Prefix:	C		
Heater Indicator:	No Heater		
Insulation Class:	F		
Lifting Lugs:	Standard Lifting Lugs		
Shaft Extension Location:	Pulley End		
Shaft Ground Indicator:	No Shaft Grounding		
Shaft Slinger Indicator:	No Slinger		
Motor Standards:	NEMA		

Nameplate 000613006HP			
CAT.NO.	D5007R	SPEC NO.	T18R1335
FR	C1811ATZ	HP	7.5
ENCL.	DP	DUTY	CONT
ENCL MOD		RPM	1750/ 2300
MAX SAFE SPEED		VOLTS	500
		AMPS	13.50
		SER.NO.	
		INSUL	F
		AMB.	40
		POWER CODE	D
		D.E. BRG.	40BC02J30X
		O.D.E. BRG.	30BC02J30X
		MIN. AMB.	
			TYPE

FIELD DATA

WINDING STR SHUNT
 VOLTS 300
 MAX AMPS @ 25 C
 HOT AMPS

Parts List		
Part Number	Description	Quantity
SA281189	SA T18R1335	1.000 EA
AA015357	AA T18R1335	1.000 EA
000613006HP	NAMEPLATE - RPM III D-C MOTOR W/CSA LOGO	1.000 EA
000692000FP	NP, WARNING LIFT INSTRUCTIONS	1.000 EA
000692000FS	WARNING LABEL	1.000 EA
036170004EA	ROUND HEAD DRIVE SCREW	6.000 EA
406770006	C/D TAG STRAIGHT SHUNT	1.000 EA
609831002A	ENLAM	2.000 EA
609844001A	BALANCE RING	1.000 EA
705009002AA	FAN ALUMINUM	1.000 EA
036170006EA	USE 33775-6EA PER DWG	2.000 EA
609844004A	LEAD SHELF	1.000 EA
609848010A	INSUL, LEAD SHELF	1.000 EA
046001026A	THERMOSTAT	1.000 EA
418007020AB	DC FRAME INSULATION C1811/DC1810/GK1104	1.000 EA
034180008EA	KEY 5/16X5/16X1 L	1.000 EA
036100012HA	HSHCS M6 12MM UNPLATED	2.000 EA
036610008AB	METRIC LCKW M6 PLTD-G508	2.000 EA
417735001A	SLEEVE	1.000 EA
036000050JB	M8-1,25 X 50 MHHCS	2.000 EA
400638001E	WWSHR	1.000 EA
801759052A	BRKT,DE,C180	1.000 EA
036000012JB	M8-1.25 X 12MM HXHDC	1.000 EA
036000012JB	M8-1.25 X 12MM HXHDC	4.000 EA

Parts List (continued)		
Part Number	Description	Quantity
417733001A	GSK C/ BOX BASE	1.000 EA
418018074A	GROUND LABEL G100 METRIC 160 D.C.	1.000 EA
034693001AB	PPLG - G508- use 034692001AB	1.000 EA
034693001AB	PPLG - G508- use 034692001AB	1.000 EA
035000001A	ALFTG 1/8" 1610-BL	1.000 EA
035000001A	ALFTG 1/8" 1610-BL	1.000 EA
036000050HB	MHHCS M6X50MM PLATED	2.000 EA
036500009AB	METRIC NUTM8-1.25PLTD-360	4.000 EA
036500009AB	METRIC NUTM8-1.25PLTD-360	4.000 EA
048977006B	GRFTG - XP	1.000 EA
418150003A	GREASE FITTING CAP	2.000 EA
609830005K	TBOLT METRIC RP609830-	4.000 EA
801758052A	BRKT,ODE,C180	1.000 EA
036000025HB	HHCS M6-1.0X25L PLTD.	4.000 EA
036601008AB	M6 FLAT WASHER	4.000 EA
036610008AB	METRIC LCKW M6 PLTD-G508	4.000 EA
419904051F	BRUSH N	2.000 EA
032018004CK	HHCS 3/8-16X1/2L PLATED	4.000 EA
036000012HB	HHCS M6X12MM LONG PLATED	2.000 EA
036620009AB	M8 EXTERNAL LK WASHER	1.000 EA
065530000B	GASK	1.000 EA
075451000A	COVER, CONDUIT BOX	1.000 EA
422919160	HHCVR KIT,C180,DE,LOUVERED	1.000 EA
422919160	HHCVR KIT,C180,DE,LOUVERED	1.000 EA

Product Information Packet: D5007R - 7.5 1750 DPG C1811ATZ STRT SHUNT

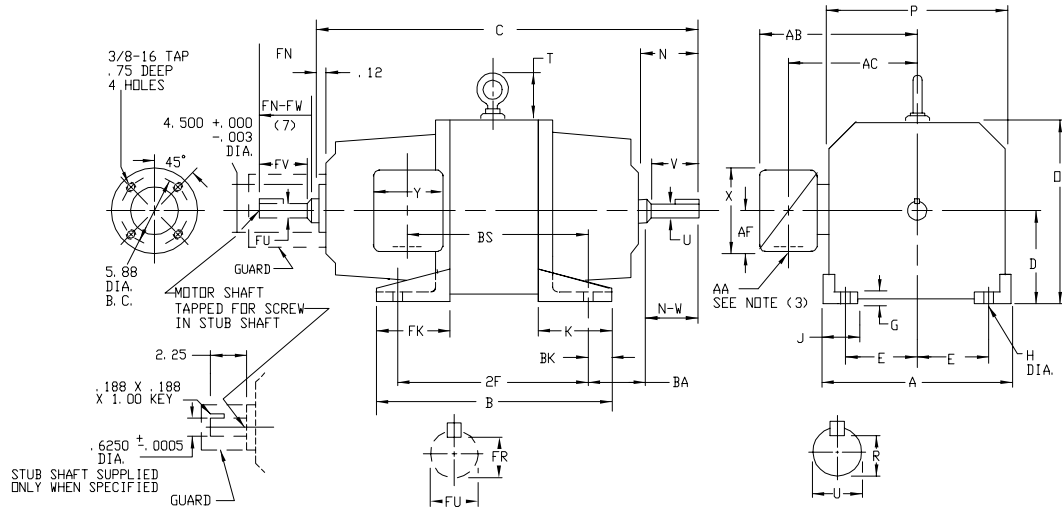
422919160	HHCVR KIT,C180,DE,LOUVERED	1.000 EA
422919172	HHCVR KIT,C180,ODE,SOLID	1.000 EA
422919173	HHCVR KIT,C180,ODE,LOUVERED	1.000 EA
422919173	HHCVR KIT,C180,ODE,LOUVERED	1.000 EA
422919173	HHCVR KIT,C180,ODE,LOUVERED	1.000 EA
706305020A	GUARD, SHAFT	1.000 EA
706320003A	CONDUIT BOX	1.000 EA
000640000P	TAG WINDING THERMOST	1.000 EA
000692000NF	NP 2POLE METRIC LABEL	1.000 EA
034180014EA	KEY 5/16X5/16X1-3/4L	1.000 EA
036000012HB	HHCS M6X12MM LONG PLATED	2.000 EA
032018010AK	HHCS 1/4-20X1-1/4L PLTD.	4.000 EA
036501008AB	KPNUT M6-1.0 ZINCPLETED	4.000 EA
036600008AB	MFWSH M6 PLATED	4.000 EA
706364051BA	BRHLD METRIC SPRING CHG.	2.000 EA
706372003A	ROCKR	1.000 EA
MG5047	VARNISH 004824-001HM	0.200 GA
MG1025N19	WILKOFAS, 778.50, RELIANCE BLUE-GREEN	0.200 GA
PA1100	PACK FOR #1 SKID; CUSTOM	1.000 EA
LB1171	LABEL CARTON 6X6 ON LINE BLANK	1.000 EA
482413015Y	#15 SLVG	6.000 FT
482413010Y	#10 SLEEVING (GREEN)	6.000 FT
041009029B	CONNECTOR, RTD	4.000 EA
041009029D	12-10BUTT CONNECTOR 350 J	3.000 EA
MN604	INSTALLATION MANUAL, RPM III DC DC180-DC	1.000 EA
415000003G	GROUND LUG	1.000 EA

609980-001

INDUSTRIAL DIRECT CURRENT MOTORS AND GENERATORS - RPM III

MOUNTING: FOOT ENCLOSURE: DRIP-PROOF FULLY-GUARDED COOLING: SELF-VENTILATED ACCESSORIES: PROVISION FOR TACHOMETER MOUNTING ONLY WHEN SPECIFIED
 METHOD OF DRIVE: COUPLED OR BELTED SPLASHPROOF, TOTALLY ENCLOSED NON-VENTILATED

FRAMES C180ATZ



- (1) 'D' DIMENSION WILL NOT BE EXCEEDED. SHIMS UP TO .03 INCHES IN THICKNESS ARE USUALLY REQUIRED FOR COUPLED OR GEARED MACHINES.
 - (2) 'U' AND 'FU' VARY +.000 - .0005
 - (3) TERMINAL BOX CAN BE ROTATED FOR LEAD OUTLET AT TOP, SIDES OR BOTTOM.
FOR 'X/P' TERMINAL BOX DIMENSIONS SEE 609989-1.
FOR MILL TYPE TERMINAL BOX DIMENSIONS SEE 609989-2.
 - (4) 'R' AND 'FR' VARY +.000, -.015.
 - (5) AA CONDUIT, TERMINAL BOX PROVIDED WITH DOUBLE KNOCKOUT.
 - (6) AA PIPE TAP.
 - (7) OPPOSITE DRIVE END SHAFT SUPPLIED ONLY WHEN SPECIFIED.
 - (8) WHEN THE MOTOR APPLICATION DOES NOT REQUIRE THE USE OF OPP. DRIVE END, ADD .25 TO 'C' DIM. FOR BRACKET COVER.
- TERMINAL BOX LOCATED ON OPPOSITE SIDE WHEN F-2, W-1, W-4, W-5, W-7 OR C-1 MOUNTING IS SPECIFIED. BOX LOCATED ON TOP WHEN SPECIFIED.
- MOTOR WEIGHT MAY VARY 15% FOR NON-STANDARD RATINGS AND/OR ACCESSORIES.
- IF MOUNTING CLEARANCE DETAILS ARE REQUIRED, CONSULT FACTORY.

DIMENSIONS ARE IN INCHES

FRAME	A	D(1)	E	G	H	J	D	P	T	BA	K	FK	BK
C1811ATZ-C1812ATZ	9.00	4.50	3.75	.31	.44	1.50	8.88	8.75	1.88	2.75	4.38	4.38	.50

FRAME	C(8)	B	BS	2F	DRIVE END SHAFT AND KEY						OPPOSITE DRIVE END SHAFT AND KEY (7)						WT. LBS.		
					N	N-V	U(2)	V	R(4)	SO.	LGTH	FN	FN-FW	FU(2)	FV	FR(4)		SO.	LGTH.
C1811ATZ	23.94	14.00	11.00	12.50	3.00	2.75	1.3750	2.50	1.201	.312	1.75	2.44	2.25	1.1250	2.00	.986	1.250	1.38	175
C1812ATZ	25.44	15.50	12.50	14.00	3.00	2.75	1.3750	2.50	1.201	.312	1.75	2.44	2.25	1.1250	2.00	.986	1.250	1.38	210

STEEL TERMINAL BOX DIMENSIONS

FRAME	MAX. AMPS	STANDARD SIZE						PART NUMBER	ONE SIZE LARGER						PART NUMBER
		AA(5)	AB	AC	AF	X	Y		AA(5)	AB	AC	AF	X	Y	
C180ATZ	40	3/4 & 1"	7.31	5.75	1.94	4.38	5.00	705028-1-R	1-1/4 & 1-1/2	8.31	6.31	2.50	5.50	6.12	705029-1-R
	96	1-1/4 & 1-1/2	8.31	6.31	2.50	5.50	6.12	705029-1-R	2" & 2-1/2	9.44	6.69	3.19	7.00	7.62	705030-1-R

CAST IRON TERMINAL BOX DIMENSIONS

FRAME	MAX AMPS	STANDARD SIZE						PART NUMBER	ONE SIZE LARGER						PART NUMBER
		AA(6)	AB	AC	AF	X	Y		AA(6)	AB	AC	AF	X	Y	
C180ATZ	18	3/4	9.38	7.38	2.50	5.00	5.75	705028-2-S	1	9.38	7.38	2.50	5.00	5.75	705028-2-T
	40	1	9.38	7.38	2.50	5.00	5.75	705028-2-T	1-1/2	10.31	7.88	3.00	6.00	7.00	705029-2-R
	96	1-1/2	10.31	7.88	3.00	6.00	7.00	705029-2-R	2	10.31	7.88	3.00	6.00	7.00	705029-2-S

CUSTOMER IS RESPONSIBLE FOR DETERMINING THAT BALDOR'S PRODUCT WILL PERFORM SUITABLY IN THE INTENDED APPLICATION.

REV. DESC: REVISED DRAWING			TDR: 000000870292		
REV. LTR: A	VERSION: 01				
FILE: \RNSN\00029\768	REVISED: 08:54:53 09/23/2014	BY: RSNPSB			
MTL: -	☐				

BALDOR

DIMENSION DRAWING, C180ATZ, DPP, TENV, FOOT MTG.

SH 1 of 1

609980-001