

**BALDOR® • RELIANCE** 

**Product Information Packet**

**D50150P**

**150HP, 1750/2000RPM, DC, 409AT, DPFG, F1, N**

Part Detail							
Revision:	-	Status:	PRD/A	Change #:		Proprietary:	No
Type:	DC	Prod. Type:		Elec. Spec:	K0108A A	CD Diagram:	15209
Enclosure:	DPFG	Mfg Plant:		Mech. Spec:		Layout:	877-2
Frame:	409AT	Mounting:	F1	Poles:	00	Created Date:	04-09-2015
Base:		Rotation:	R	Insulation:	F	Eff. Date:	04-13-2015
Field Type:		Literature:		Elec. Diagram:		Replaced By:	

Specs			
Enclosure:	DPFG		
Frame:	409AT		
Frame Material:	Steel		
Agency Approvals:	CSA		
Base Indicator:	Rigid		
Bearing Grease Type:	Polyrex EM (-20F +300F)		
Drip Cover:	No Drip Cover		
Duty Rating:	CONT		
Feedback Device:	NO FEEDBACK		
Field Winding Type:	STR. SHUNT		
Heater Indicator:	No Heater		
Insulation Class:	F		
Lifting Lugs:	Standard Lifting Lugs		
Mounting Arrangement:	F1		
Shaft Extension Location:	Pulley End		
Shaft Ground Indicator:	No Shaft Grounding		

<b>Shaft Slinger Indicator:</b>	No Slinger		
<b>Motor Standards:</b>	NEMA		

Nameplate NP1734											
CAT.NO.	D50150P			MODEL	T40R8002						
HP	150	RPM	1750/ 2000		FRAME	0409AT					
ARM V	500	ARM A	237.00		WOUND	STR. SHUNT					
FLD V	150/ 300	FLD A	4.70-3.40/2.35-1.70								
CONN		OHMS				CL	F				
ENCL	DPFG	DUTY	CONT			MX AMB	40				
P CODE	D	CTSR				SER.F.	1.0				
S/N				E/S	K0108A A						
	BRUSH:40019-3										
O.D.E. BRG.	6213	D.E. BRG.	6214	BRUSH						QTY	

Parts List		
Part Number	Description	Quantity
SA297009	SA T40R8002	1.000 EA
AA016060	AA T40R8002	1.000 EA
036170004DA	DRSCW METRIC NAMEPLATE	4.000 EA
NP1734	NPL,BALDOR DC MTR ALUMINUM	1.000 EA
15209	LABEL CONNECTIONS & TERMINAL MARKIN	1.000 EA
032018018CK	HHCS 3/8-16X2-1/4 PLTD.	12.000 EA
424503001BN	ARM INSUL KIT	1.000 EA
032018004BK	HHCS 5/16-18X1/2 PLATED	4.000 EA
15094	DISHED LOCKWASHER .332 ID, .865 OD	4.000 EA
40005-2	DUAL BRUSH ROCKER ASSY	1.000 EA
40019-3	BRUSH,400 FR. SERIES E-77 SGL/CARBON	8.000 EA
004824015A	GREASE POLYREX EM	0.900 LB
032018010BK	HHCS 5/16-18X1-1/4 PLTD.	4.000 EA
032018010DK	HHCS 1/2-13X1-1/4 PLATED	4.000 EA
032018010DK	HHCS 1/2-13X1-1/4 PLATED	4.000 EA
035000001A	ALFTG 1/8" 1610-BL	1.000 EA
035000001A	ALFTG 1/8" 1610-BL	1.000 EA
151132	WAVE SPRING,#SSB-0492, CARB.STL,SMALLEY	1.000 EA
40020-2	FE BRKT MACH FR 400	1.000 EA
40021-2	CE BRKT MACH FR 400 STD L	1.000 EA
HW4500A17	317400 ALEMITE GREASE RELIEF	1.000 EA
HW4500A17	317400 ALEMITE GREASE RELIEF	1.000 EA
032018004BK	HHCS 5/16-18X1/2 PLATED	2.000 EA
032018004BK	HHCS 5/16-18X1/2 PLATED	4.000 EA

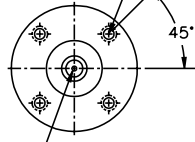
Parts List (continued)		
Part Number	Description	Quantity
032018004BK	HHCS 5/16-18X1/2 PLATED	44.000 EA
032018006DK	HHCS 1/2-13X3/4 PLATED	4.000 EA
034036014AB	EX.TOOTH LCKW 3/8 PLTD.	1.000 EA
15021-1	ACCESSORY FACE COVER FRAME 180-500 SERIE	1.000 EA
15025	TERMINAL BOX BACK FRAME 36 & 40 SERIES #	1.000 EA
15026-1	COVER TERM BOX MACH FR 36 & 40 SERIES	1.000 EA
150906-62	GRDG STUD,HX HD BOLT 3/8-16,W/HD PAINTED	1.000 EA
15599-37	DRIVE SCR,#10 X.37 TYPE UPLATED STEEL	6.000 EA
36018-2	SLD CVR,CE,FR-360 14 GA(.075THK)	1.000 EA
36019-1	GASKET CVR,FE,3/32 THK, ARMSTRONG DC205	4.000 EA
36019-2	GASKET CVR,CE,3/32 THK ARMSTRONG DC205	4.000 EA
36020-1	SMILE CVR,(LOUVERS)FR-36018 GA C.R. STEE	1.000 EA
36057-1	VENT CVR,LVR,FE,FR-360 18 GA(.048THK)	3.000 EA
36057-2	VENT CVR,LUVR,CE,FR-360 18 GA(.048THK)	3.000 EA
36246	GASKET,TERM.BOX,FR.360 1/8 THK ARMSTRONG	1.000 EA
40030-1	FLANGENIPPLEMACH400FRAME3"-8N.P.T40030	1.000 EA
HW4001A15	3.00 NPT RECESSED HEAD PLUG, RIGID (PLG	1.000 EA
004824007BTW	SPECIAL PAINT4824-3BVZ	0.300 EA
034180032HA	KEY 5/8X5/8X4 L bin stocked	1.000 EA
PA3100	PACK FOR #3 SKID; CUSTOM	1.000 EA

<b>Accessories</b>		
<b>Part Number</b>	<b>Description</b>	<b>Multiplier</b>
96EP5000A01	C-FACE CONVERSION KIT FOR STOCK MTR,FR 4	

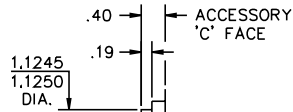
CUSTOMER NAME			MODEL NO.			MTG.		REMARKS:		
CUSTOMER P.O.			FRAME		R.P.M.	PHASE		INSUL		
CERTIFIED BY			H.P.		TYPE	VOLTS		AMB.		
DATE						ENCL		SHEET 2 OF 3		

UNITS: INCH	SCALE: NONE	PROPORTION: NONE	PART NUMBER 877	DWG. SIZE A
-------------	-------------	------------------	-----------------	-------------

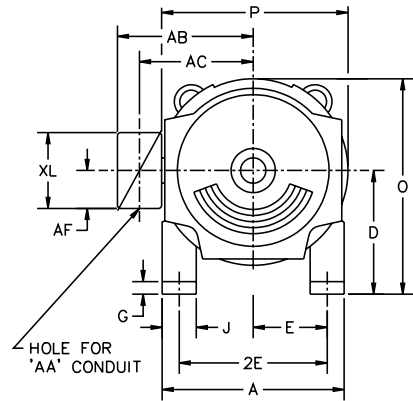
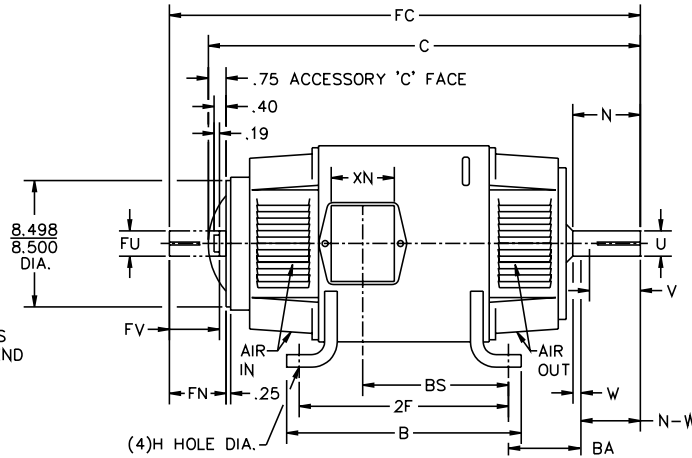
1/2-13UNC-2B THD X 1.00 DEEP  
4-HOLES EQUALLY SPACED  
ON A 7.250 DIA. B.C.



1/2-13 UNC-2B THD'S  
1.00 DEEP IN SHAFT END



STANDARD COMM END  
FOR SINGLE SHAFT EXTENSION



FRAME	FOOT MOUNTING							D.E. SHAFT EXTENSION					DRIVE KEY		ACC SHAFT EXTENSION			ACC KEY		FRAME					
	BA	E	2F	G	H	J	N	N-W	U	V	W	KEY-SQ.	KEY-LONG	FN	FU	FV	KEY-SQ.	KEY-LONG	A	B	C	FC	D	O	P
407AT	6.63	8.00	18.00	.81	.938	4.00	5.44	5.25	2.625	5.00 <sup>3</sup>	.19	.625	4.00	4.95	2.375	4.70	.625	3.50	20.00	20.00	40.13	44.34	10.00 <sup>2</sup>	20.19	20.38
L407AT	6.63	8.00	18.00	.81	.938	4.00	5.44	5.25	2.625	5.00 <sup>3</sup>	.19	.625	4.00	4.95	2.375	4.70	.625	3.50	20.00	20.00	41.25	45.46	10.00 <sup>2</sup>	20.19	20.38
409AT	6.63	8.00	22.00	.81	.938	4.00	5.44	5.25	2.625	5.00 <sup>3</sup>	.19	.625	4.00	4.95	2.375	4.70	.625	3.50	20.00	24.00	44.63	48.84	10.00 <sup>2</sup>	20.19	20.38
L409AT	6.63	8.00	22.00	.81	.938	4.00	5.44	5.25	2.625	5.00 <sup>3</sup>	.19	.625	4.00	4.95	2.375	4.70	.625	3.50	20.00	24.00	45.75	49.96	10.00 <sup>2</sup>	20.19	20.38
L4011AT	6.63	8.00	28.00	.81	.938	4.00	5.44	5.25	2.625	5.00 <sup>3</sup>	.19	.625	4.00	4.95	2.375	4.70	.625	3.50	20.00	30.00	52.75	56.96	10.00 <sup>2</sup>	20.19	20.38

FRAME	CONDUIT BOX							ARM APPROX. WK <sup>2</sup> LBS.FT. <sup>2</sup>	APPROXIMATE WEIGHT
	AA	AB	AC	AF	BS	XL	XN		
407AT	3	18.28	14.45	3.34	14.50	11.63	7.76	35.47	1317 <sup>5</sup>
L407AT	3	18.28	14.45	3.34	15.62	11.63	7.76	35.47	1367 <sup>5</sup>
409AT	3	18.28	14.45	3.34	19.00	11.63	7.76	43.81	1613 <sup>5</sup>
L409AT	3	18.28	14.45	3.34	20.12	11.63	7.76	43.81	1663 <sup>5</sup>
L4011AT	4	19.28	14.63	3.50	27.70	13.40	13.50	55.64	2260 <sup>5</sup>

- 1) SHAFT DIAMETERS TO 1.500 TOLERANCE +.0000 - .0005  
SHAFT DIAMETERS ABOVE 1.500 TOLERANCE +.0000 - .0010  
SHAFT DIAMETERS TO 1.625 RUNOUT .002 T.I.R. MAX.  
SHAFT DIAMETERS ABOVE 1.625 RUNOUT .003 T.I.R. MAX.
- 2) 'D' DIMENSION TOLERANCE +.000 - .060
- 3) 'Y' DIMENSION IS MAX. HUB LENGTH ON SHAFT
- 4) CONDUIT BOX CAN BE ROTATED IN 90° STEPS ON ITS OWN AXIS.
- 5) TOTAL WEIGHT OF MOTOR.
- 6) ALL DIMENSIONS NOT NOTED ARE NOMINAL DIMENSIONS CONSULT FACTORY FOR TOLERANCES.

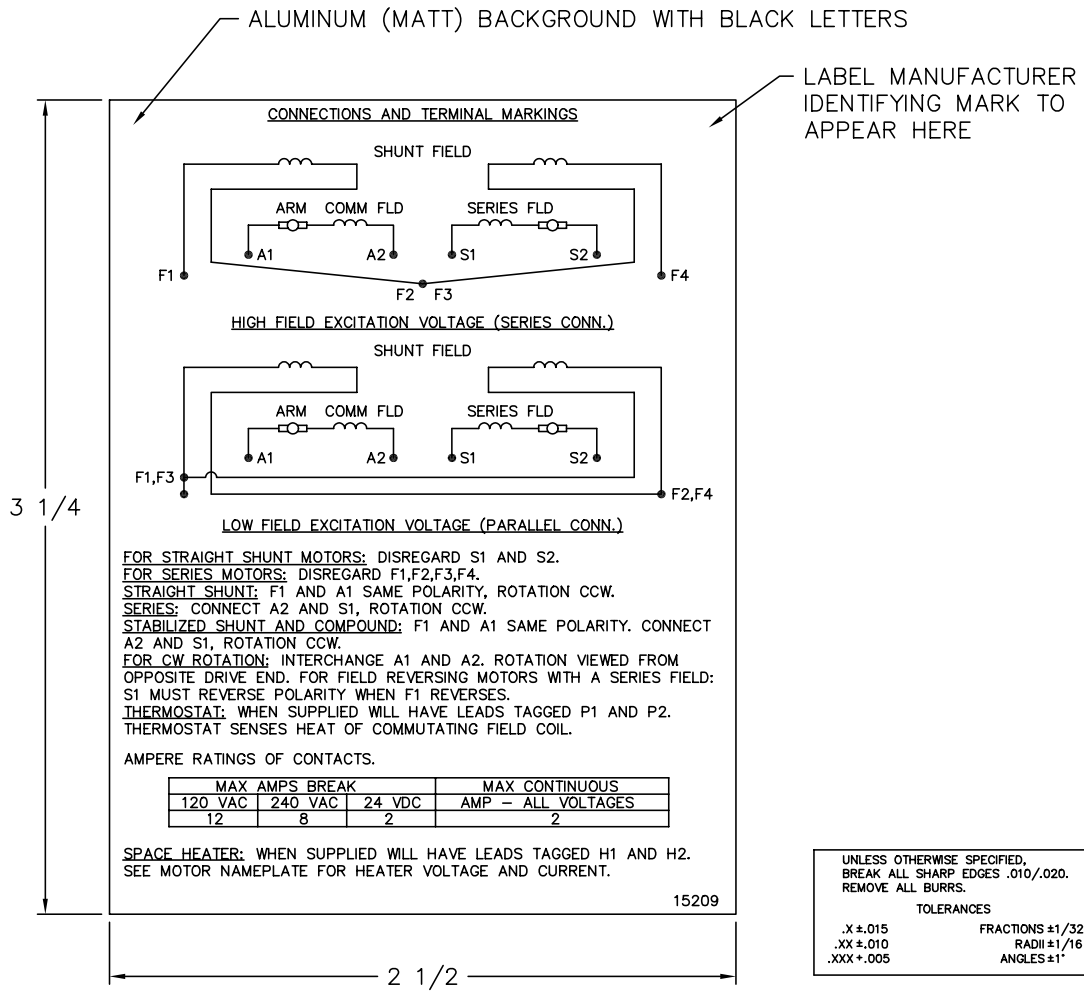
FOR F1 OR F2 CONDUIT BOX  
LOCATION SEE SALES ORDER

DESIGNER CSL 7-19-91	<b>BALDOR</b>					
ENGINEER RFL 7-19-91						
ENGINEER DAG 7-19-91						
MANUF. RWL 7-19-91						
TITLE: DIMENSION SHEET DPFG, STD AT SHEET 2 OF 3						
REV. ECO.	DESCRIPTION	BY	DATE	PART NUMBER 877	DWG. SIZE A	REV. B

B	54100	ADD L4011AT FRAME	CSL	3-16-1994
---	-------	-------------------	-----	-----------



15209



**NOTE:**  
 MATERIAL .005 MINIMUM FULL HARD ALUMINUM DULL FINISH.  
 TEMP. RANGE -20°C TO +125°C MAXIMUM.  
 FOR INDOOR AND OUTDOOR MOUNTING BACK.  
 METAL, PRESSURE SENSITIVE BACK. MUST MEET CSA STANDARD.  
 THE CSA IDENTIFYING MARK OF THE LABEL MANUFACTURER MUST APPEAR IN THE UPPER RIGHT HAND CORNER AS INDICATED.

UNLESS OTHERWISE SPECIFIED, BREAK ALL SHARP EDGES .010/.020. REMOVE ALL BURRS.

TOLERANCES

.X ± .015	FRACTIONS ±1/32
.XX ± .010	RADI ±1/16
.XXX ± .005	ANGLES ±1°

15209

MATL: NOTED			
REV:	G	CHANGE ALL "NAMEPLATE" TEXT TO "LABEL"	
60Z91	SCALE: -	BY: BKW	REVISED: 02/19/97
	FILE: CHB00002485	TDR: 0115147	

**BALDOR ELECTRIC Co.**

LABEL, CONNECTIONS AND TERMINAL MARKINGS DC

Marketing maintained PDF of MN605:

<http://www.baldor.com/support/Literature/Load.ashx/MN605?ManNumber=MN605>