

BALDOR® • RELIANCE 

Product Information Packet

D50300R-BV

300 1750 LC3613ATZ DPFV STR SHNT

Part Detail							
Revision:	-	Status:	PRD/A	Change #:		Proprietary:	No
Type:	DC	Prod. Type:		Elec. Spec:	G8291A B	CD Diagram:	406770-006
Enclosure:	DP	Mfg Plant:		Mech. Spec:		Layout:	616042-001
Frame:	LC361	Mounting:	F2	Poles:	00	Created Date:	04-09-2015
Base:		Rotation:	R	Insulation:	F	Eff. Date:	04-13-2015
Field Type:		Literature:		Elec. Diagram:		Replaced By:	

Specs			
Enclosure:	DP		
Frame:	LC3613ATZ		
Frame Material:	Steel		
Agency Approvals:	CCSA US		
Base Indicator:	Rigid		
Bearing Grease Type:	Polyrex EM (-20F +300F)		
Drip Cover:	No Drip Cover		
Duty Rating:	CONT		
Feedback Device:	NO FEEDBACK		
Field Winding Type:	STR. SHUNT		
Frame Prefix:	LC		
Heater Indicator:	No Heater		
Insulation Class:	F		
Lifting Lugs:	Standard Lifting Lugs		
Mounting Arrangement:	F2		
Shaft Extension Location:	Pulley End		

Shaft Ground Indicator:	No Shaft Grounding		
Shaft Slinger Indicator:	No Slinger		
Motor Standards:	NEMA		

Nameplate 000613006HP			
CAT.NO.	D50300R-BV	SPEC NO.	T36S1319
FR	LC 3613ATZ	HP	300
ENCL.	DP	DUTY	CONT
ENCL MOD	FORCE VENT	RPM	1750/ 2000
MAX SAFE SPEED	3200	VOLTS	500
		AMPS	478.00
		SER.NO.	
		POWER CODE	C
		D.E. BRG.	95BC02J30X
		O.D.E. BRG.	80BC02J30X
		MIN. AMB.	0
		TYPE	TR
		S.F.	1.0
		INSUL	F
		AMB.	40
FIELD DATA			
WINDING	STR. SHUNT		
VOLTS	300		
MAX AMPS @ 25 C	12.57		
HOT AMPS	8.71/ 7.37		
	BRUSH:419904052AB		

Parts List		
Part Number	Description	Quantity
SA297013	SA T36S1319	1.000 EA
AA016064	AA T36S1319	1.000 EA
000613006HP	NAMEPLATE - RPM III D-C MOTOR W/CSA LOGO	1.000 EA
000692000FP	NP, WARNING LIFT INSTRUCTIONS	1.000 EA
000692000FS	WARNING LABEL	1.000 EA
036170004EA	ROUND HEAD DRIVE SCREW	6.000 EA
406770006	C/D TAG STRAIGHT SHUNT	1.000 EA
036000014JB	M8 X 1.25X14MM HXHDCS	4.000 EA
036000020KB	MHHCS M10-1.5X20MM PLTD.	4.000 EA
036501009AB	M8-1.25 X 9MM HEX NUTS	8.000 EA
036600009AB	METRIC FLWASH M8 PLATED	4.000 EA
036610010AB	MHSLW M10 PLATED	4.000 EA
419904-52AB	BRUSH C	12.000 EA
419905003A	FLAT WASHER ROCKER RPM III RGG	4.000 EA
419905004A	HARDWARE	8.000 EA
706364052RH	BRHLD METRIC SPRING CHG.	4.000 EA
706372012RC	ROCKR METRIC	1.000 EA
034693001AB	PPLG - G508- use 034692001AB	1.000 EA
034693001AB	PPLG - G508- use 034692001AB	1.000 EA
035000001A	ALFTG 1/8" 1610-BL	1.000 EA
035000001BB	GREASE FTG,GRS.IN	1.000 EA
036000070KB	HHCS,BLOCKING PLT	4.000 EA
036100080KA	M10-1.50X 80MM HXSOCHDCS	4.000 EA
036500013AB	HX NUT,ODE BRKT	4.000 EA

Parts List (continued)		
Part Number	Description	Quantity
036500013AB	HX NUT,ODE BRKT	4.000 EA
048977006C	GRFTG - XP	1.000 EA
418150003A	GREASE FITTING CAP	2.000 EA
419912001B	W WASHER	1.000 EA
609830005ABA	TBOLT METRIC	4.000 EA
801932104C	BRKT,ODE,C360	1.000 EA
801933102A	BRKT,DE,C360	1.000 EA
000613006NT	NAME PLATE IEC	1.000 EA
032018004CK	HHCS 3/8-16X1/2L PLATED	4.000 EA
032018006CK	HHCS 3/8-16X3/4L PLATED	4.000 EA
034017014AB	LCKW 3/8 STD. PLATED	4.000 EA
036000012JB	M8-1.25 X 12MM HXHDC	3.000 EA
036000020JB	HHCS M8-1.25X20L PLTD-250	6.000 EA
036000045JB	M8-1.25 X 45MM HXHCS	4.000 EA
036620009AB	M8 EXTERNAL LK WASHER	1.000 EA
410978010F	FLANGE, INLET BLOWER HSG	1.000 EA
410978015A	GRILL, INLET FLANGE	1.000 EA
417733004F	GASKT	2.000 EA
418014004A	ADAPT 418014-4WCA	1.000 EA
418018074A	GROUND LABEL G100 METRIC 160 D.C.	1.000 EA
422919105	HHCVR KIT,C360,DE,SOLID	1.000 EA
422919107	HHCVR KIT,C360,DE, LOUVERED	1.000 EA
422919107	HHCVR KIT,C360,DE, LOUVERED	1.000 EA
422919116	HHCVR KIT,C360,ODE,SOLID	1.000 EA

Product Information Packet: D50300R-BV - 300 1750 LC3613ATZ DPFV STR SHNT

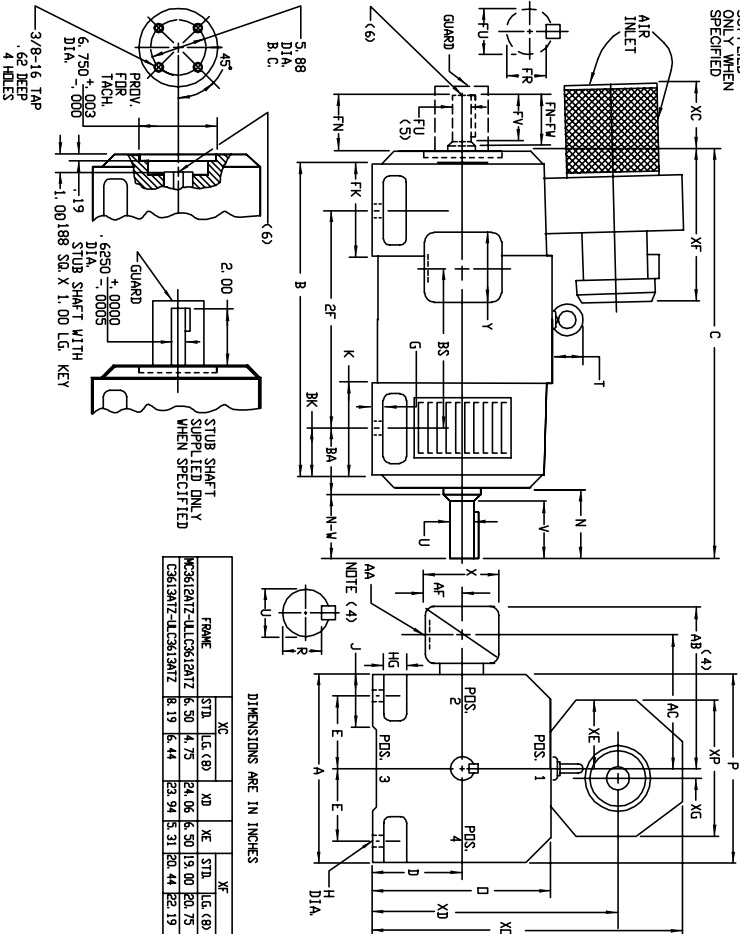
422919116	HHCVR KIT,C360,ODE,SOLID	1.000 EA
610490001BW	3//2.5HP,3450//2850RPM,3PH,60//50HZ,145T	1.000 EA
611917002J	GASKET, NEOPRENE	1.000 EA
611965001E	BLOWER WHEEL	1.000 EA
706305026A	GUARD,SHAFT	1.000 EA
706310004F	CBOX MILL ENG/METRIC	1.000 EA
706313062E	BLOWER HOUSING	1.000 EA
000640000P	TAG WINDING THERMOST	1.000 EA
000692000NG	LABEL ;NP 4POLE METRIC LABEL	1.000 EA
034180034JA	3/4X3/4 X 41/4 L KEY	1.000 EA
418018071	LABEL LABE	1.000 EA

616042-001

INDUSTRIAL DIRECT CURRENT MOTORS AND GENERATORS - RPM III
 ENCLOSURE: DRIP-PROOF FULLY-GUARDED
 COOLING: FORCE VENTILATED WITH INTEGRAL BLOWER AND MOTOR
 MOUNTING: FOOT SPLASHPROOF
 ACCESSORIES: FORCE VENTILATED BLOWER AND MOTOR AIR FILTERED
 PROVISION FOR TACHOMETER MOUNTING ONLY WHEN SPECIFIED

FRAMES MC3612ATZ THRU ULC3613ATZ

FILTERED SUPPLIED SHIM SPECIFIED



DIMENSIONS ARE IN INCHES

FRAME	XC	XD	XE	XF	YG	YD	YD	YP
MC3612ATZ-ULC3612ATZ	6.50	4.75	24.06	6.50	19.00	20.75	(29)	29.75
ULC3613ATZ-ULC3613ATZ	8.19	6.44	23.94	8.31	20.44	22.19	3.28	31.50
								15.12

FRAME	A	B(1)	E	G	H	HG	J	D	P	T	PA	K	STD. LG. (2)	RK
MC3612ATZ-ULC3612ATZ	17.50	9.00	7.00	.88	.81	2.42	3.50	17.81	17.42	3.54	5.88	7.25	8.56	10.31
														4.42

FRAME	METHOD	CC2	STD. LG. (2)	STD. LG. (3)	BS	2F	N	N-H	U(2)	V	R(2)	SD	LGTH	FN	FN-FM	FL(2)	FV	FR(2)	SD	LGTH	LS	
MC3612ATZ-ULC3612ATZ	CUPLED	42.88	44.42	34.44	36.19	18.12	88.00	6.00	5.75	2.875	5.50	4.25	6.00	5.75	2.875	5.50	2.450	7.50	4.25	7.50	4.25	1.685
ULC3612ATZ-ULC3612ATZ	BELTED	43.62	45.38	34.44	36.19	18.12	88.00	6.75	5.50	2.875	5.25	6.25	6.831	7.50	5.00	5.75	2.875	5.50	2.450	7.50	4.25	1.695
ULC3612ATZ-ULC3612ATZ	CUPLED	46.62	48.38	34.19	35.94	21.88	88.00	6.00	5.75	2.875	5.50	4.25	6.00	5.75	2.875	5.50	2.450	7.50	4.25	7.50	4.25	1.690
ULC3612ATZ-ULC3612ATZ	BELTED	47.38	49.12	34.19	35.94	21.88	88.00	6.75	5.50	2.875	5.25	6.25	6.831	7.50	5.00	5.75	2.875	5.50	2.450	7.50	4.25	1.660
MC3613ATZ-ULC3613ATZ	CUPLED	50.12	51.88	41.69	43.44	25.38	92.00	6.00	5.75	2.875	5.50	4.25	6.00	5.75	2.875	5.50	2.450	7.50	4.25	7.50	4.25	1.810
ULC3613ATZ-ULC3613ATZ	BELTED	50.88	52.62	41.69	43.44	25.38	92.00	6.75	5.50	2.875	5.25	6.25	6.831	7.50	5.00	5.75	2.875	5.50	2.450	7.50	4.25	1.820

- (1) "P" DIMENSION WILL NOT BE EXCEEDED. SHIMS UP TO .06 INCHES IN THICKNESS ARE ALLOWED FOR CUPLED OR GEARED MACHINES.
- (2) "R" AND "FR" VARY FROM +.000 TO -.015
- (3) "A" AND "B" VARY FROM +.000 TO -.015
- (4) TERMINAL BOX VARIES WITH H.P. FOR DIMENSIONS "AA", "AB", "AC", "AD", "AE", "AF", "AG", "AH", "AI", "AJ", "AK", "AL", "AM", "AN", "AO", "AP", "AQ", "AR", "AS", "AT", "AU", "AV", "AW", "AX", "AY", "AZ", "BA", "BB", "BC", "BD", "BE", "BF", "BG", "BH", "BI", "BJ", "BK", "BL", "BM", "BN", "BO", "BP", "BQ", "BR", "BS", "BT", "BU", "BV", "BW", "BX", "BY", "BZ", "CA", "CB", "CC", "CD", "CE", "CF", "CG", "CH", "CI", "CJ", "CK", "CL", "CM", "CN", "CO", "CP", "CQ", "CR", "CS", "CT", "CU", "CV", "CW", "CX", "CY", "CZ", "DA", "DB", "DC", "DD", "DE", "DF", "DG", "DH", "DI", "DJ", "DK", "DL", "DM", "DN", "DO", "DP", "DQ", "DR", "DS", "DT", "DU", "DV", "DW", "DX", "DY", "DZ", "EA", "EB", "EC", "ED", "EE", "EF", "EG", "EH", "EI", "EJ", "EK", "EL", "EM", "EN", "EO", "EP", "EQ", "ER", "ES", "ET", "EU", "EV", "EW", "EX", "EY", "EZ", "FA", "FB", "FC", "FD", "FE", "FF", "FG", "FH", "FI", "FJ", "FK", "FL", "FM", "FN", "FO", "FP", "FQ", "FR", "FS", "FT", "FU", "FV", "FW", "FX", "FY", "FZ", "GA", "GB", "GC", "GD", "GE", "GF", "GG", "GH", "GI", "GJ", "GK", "GL", "GM", "GN", "GO", "GP", "GQ", "GR", "GS", "GT", "GU", "GV", "GW", "GX", "GY", "GZ", "HA", "HB", "HC", "HD", "HE", "HF", "HG", "HH", "HI", "HJ", "HK", "HL", "HM", "HN", "HO", "HP", "HQ", "HR", "HS", "HT", "HU", "HV", "HW", "HX", "HY", "HZ", "IA", "IB", "IC", "ID", "IE", "IF", "IG", "IH", "II", "IJ", "IK", "IL", "IM", "IN", "IO", "IP", "IQ", "IR", "IS", "IT", "IU", "IV", "IW", "IX", "IY", "IZ", "JA", "JB", "JC", "JD", "JE", "JF", "JG", "JH", "JI", "JJ", "JK", "JL", "JM", "JN", "JO", "JP", "JQ", "JR", "JS", "JT", "JU", "JV", "JW", "JX", "JY", "JZ", "KA", "KB", "KC", "KD", "KE", "KF", "KG", "KH", "KI", "KJ", "KK", "KL", "KM", "KN", "KO", "KP", "KQ", "KR", "KS", "KT", "KU", "KV", "KW", "KX", "KY", "KZ", "LA", "LB", "LC", "LD", "LE", "LF", "LG", "LH", "LI", "LJ", "LK", "LL", "LM", "LN", "LO", "LP", "LQ", "LR", "LS", "LT", "LU", "LV", "LW", "LX", "LY", "LZ", "MA", "MB", "MC", "MD", "ME", "MF", "MG", "MH", "MI", "MJ", "MK", "ML", "MN", "MO", "MP", "MQ", "MR", "MS", "MT", "MU", "MV", "MW", "MX", "MY", "MZ", "NA", "NB", "NC", "ND", "NE", "NF", "NG", "NH", "NI", "NJ", "NK", "NL", "NM", "NO", "NP", "NQ", "NR", "NS", "NT", "NU", "NV", "NW", "NX", "NY", "NZ", "OA", "OB", "OC", "OD", "OE", "OF", "OG", "OH", "OI", "OJ", "OK", "OL", "OM", "ON", "OO", "OP", "OQ", "OR", "OS", "OT", "OU", "OV", "OW", "OX", "OY", "OZ", "PA", "PB", "PC", "PD", "PE", "PF", "PG", "PH", "PI", "PJ", "PK", "PL", "PM", "PN", "PO", "PP", "PQ", "PR", "PS", "PT", "PU", "PV", "PW", "PX", "PY", "PZ", "QA", "QB", "QC", "QD", "QE", "QF", "QG", "QH", "QI", "QJ", "QK", "QL", "QM", "QN", "QO", "QP", "QQ", "QR", "QS", "QT", "QU", "QV", "QW", "QX", "QY", "QZ", "RA", "RB", "RC", "RD", "RE", "RF", "RG", "RH", "RI", "RJ", "RK", "RL", "RM", "RN", "RO", "RP", "RQ", "RR", "RS", "RT", "RU", "RV", "RW", "RX", "RY", "RZ", "SA", "SB", "SC", "SD", "SE", "SF", "SG", "SH", "SI", "SJ", "SK", "SL", "SM", "SN", "SO", "SP", "SQ", "SR", "SS", "ST", "SU", "SV", "SW", "SX", "SY", "SZ", "TA", "TB", "TC", "TD", "TE", "TF", "TG", "TH", "TI", "TJ", "TK", "TL", "TM", "TN", "TO", "TP", "TQ", "TR", "TS", "TT", "TU", "TV", "TW", "TX", "TY", "TZ", "UA", "UB", "UC", "UD", "UE", "UF", "UG", "UH", "UI", "UJ", "UK", "UL", "UM", "UN", "UO", "UP", "UQ", "UR", "US", "UT", "UU", "UV", "UW", "UX", "UY", "UZ", "VA", "VB", "VC", "VD", "VE", "VF", "VG", "VH", "VI", "VJ", "VK", "VL", "VM", "VN", "VO", "VP", "VQ", "VR", "VS", "VT", "VU", "VV", "VW", "VX", "VY", "VZ", "WA", "WB", "WC", "WD", "WE", "WF", "WG", "WH", "WI", "WJ", "WK", "WL", "WM", "WN", "WO", "WP", "WQ", "WR", "WS", "WT", "WU", "WV", "WW", "WX", "WY", "WZ", "XA", "XB", "XC", "XD", "XE", "XF", "XG", "XH", "XI", "XJ", "XK", "XL", "XM", "XN", "XO", "XP", "XQ", "XR", "XS", "XT", "XU", "XV", "XW", "XZ", "YA", "YB", "YC", "YD", "YE", "YF", "YG", "YH", "YI", "YJ", "YK", "YL", "YM", "YN", "YO", "YP", "YQ", "YR", "YS", "YT", "YU", "YV", "YW", "YZ", "ZA", "ZB", "ZC", "ZD", "ZE", "ZF", "ZG", "ZH", "ZI", "ZJ", "ZK", "ZL", "ZM", "ZN", "ZO", "ZP", "ZQ", "ZR", "ZS", "ZT", "ZU", "ZV", "ZW", "ZX", "ZY", "ZZ"

CUSTOMER IS RESPONSIBLE FOR DETERMINING THAT BALDOR'S PRODUCT WILL PERFORM SUITABLY IN THE INTENDED APPLICATION.

REV. DESC: ENLARGE SO PRINT IS MORE LEGIBLE	VERSION: 01	TDR: 000000762335
REV. LTR: A		
FILE: \RGG\00016\063		REVISED: 01:30:17 08/27/2012
MTL: -		BY: RGGWT

BALDOR

DIMENSION DRAWING, MC3612ATZ - ULC3613ATZ, DPP, FOOT MTG

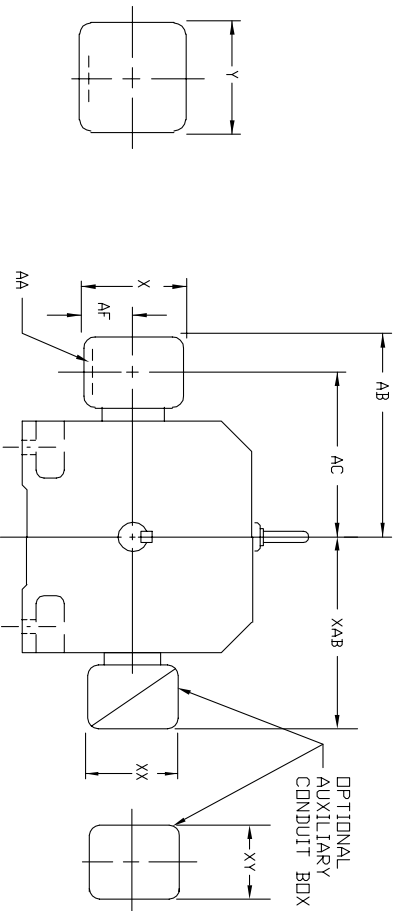
SH 1 of 1

616042-001

INDUSTRIAL DIRECT CURRENT MOTORS AND GENERATORS – RPM III

609979-003

HOFFMAN TERMINAL BOX – MILL TYPE
FRAMES C3210ATZ THRU C3612ATZ



DIMENSIONS ARE IN INCHES

TERMINAL BOX DIMENSIONS				F1 MOUNTING			
FRAME SIZE	MAX. AMPS	AA	AB	AC	AF	X	Y
C3210ATZ	128	2	15.47	12.06	6.00	16.00	16.00
C3212ATZ	185	3	15.47	12.06	6.00	16.00	16.00
C3214ATZ	269	4	15.47	12.06	6.00	16.00	16.00
(1)	500	(2)	15.47	12.06	6.00	16.00	16.00
C3612ATZ	128	2	16.47	13.06	6.00	16.00	16.00
C3613ATZ	185	3	16.47	13.06	6.00	16.00	16.00
C3613ATZ	269	4	16.47	13.06	6.00	16.00	16.00
(1)	500	(2)	16.47	13.06	6.00	16.00	16.00

TERMINAL BOX DIMENSIONS				F2 MOUNTING			
FRAME SIZE	MAX. AMPS	AA	AB	AC	AF	X	Y
C3210ATZ	128	2	15.47	12.06	6.00	16.00	16.00
C3212ATZ	185	3	15.47	12.06	6.00	16.00	16.00
C3214ATZ	269	4	15.47	12.06	6.00	16.00	16.00
(1)	500	(2)	15.47	12.06	6.00	16.00	16.00
C3612ATZ	128	2	16.47	13.06	6.00	16.00	16.00
C3613ATZ	185	3	16.47	13.06	6.00	16.00	16.00
C3613ATZ	269	4	16.47	13.06	6.00	16.00	16.00
(1)	500	(2)	16.47	13.06	6.00	16.00	16.00

OPTIONAL AUXILIARY CONDUIT BOX DIMENSIONS (MAXIMUM)							
FRAME SIZE	XAB	XX	XY	PART NUMBER	FRAME SIZE	XAB	XX
C320	10.00	4.25	4.25	602007-26-A	C320	13.50	8.00
C360	11.00	4.25	4.25	602007-26-A	C360	14.50	8.00
						8.00	8.00
							706310-3-B

(1) SUBTRACT 4.50 FROM 'BS' DIMENSION SHOWN ON MOTOR DIMENSION SHEET.
(2) TERMINAL BOX LOCATED ON OPPOSITE SIDE OR ON TOP WHEN SPECIFIED.
BOX FOR CONDUIT AS REQUIRED.

600-66909

CUSTOMER IS RESPONSIBLE FOR DETERMINING THAT BALDOR'S PRODUCT WILL PERFORM SUITABLY IN THE INTENDED APPLICATION.

REV. DESC: LOAD TO BUS	VERSION: 00	TDR: 000000958120
REV. LTR: -	REVISED: 03:12:59 12/17/2015	BY: RGGWT
FILE: \RGG\00026\326		
MTL: -		

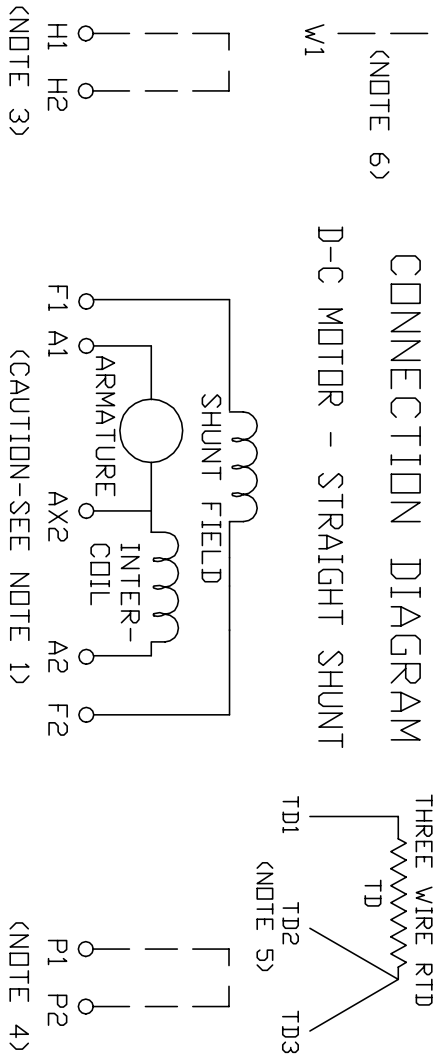
BALDOR

DIM SHT,C3210ATX THRU C3612ATZ,MILL TYPE TERMINAL BOX

SH 1 of 1

406770-006

406770-006



1. **CAUTION** — ARMATURE MAY HAVE MULTIPLE LEADS. CONNECT ALL LUGS WITH THE SAME MARKING TOGETHER.
2. OPTIONAL CONTROL SIGNAL LEAD IS MARKED AX2. ALWAYS TAKE INTERPOLE DROP BETWEEN A2 AND AX2. NOTE: NEMA DESIGNATION FOR AX2 IS LETTER C.
3. SPACE HEATERS, WHEN PROVIDED, WILL HAVE LEADS MARKED H1 AND H2, H3, H4, ETC.
4. THERMAL PROTECTOR, WHEN PROVIDED, WILL HAVE LEADS MARKED P1 AND P2, P3, P4, ETC.
5. WINDING RTD'S, WHEN PROVIDED, WILL HAVE LEADS MARKED TD1, TD2, & TD3.
6. BRUSH WEAR SENSOR, WHEN PROVIDED, WILL HAVE LEAD MARKED W1.
7. **WARNING** — MOTOR MUST BE GROUNDED TO PREVENT SERIOUS INJURIES TO PERSONNEL. GROUND THE MOTOR PER IEC, NATIONAL ELECTRICAL CODE AND ANY APPLICABLE LOCAL ELECTRICAL CODES. A TAPPED HOLE IS PROVIDED IN THE CONDUIT BOX, ON THE FOOT. FRAME BRACE OR OPPOSITE OPPOSITE DRIVE END BRACKET, ADJACENT TO THE TERMINAL BOX FOR FOR MOTOR GROUNDING. GROUND LEAD, WHEN PROVIDED, WILL BE GREEN.

CUSTOMER _____ RELIANCE _____
ORDER NO. _____ S.D. NO. _____

REV. DESC: UPDATE LOGO AND TITLEBLOCK: LOADED TO BUS		
REV. LTR: -	VERSION: 00	TDR: 000000781086
FILE: \RSN\00026\515	REVISED: 02: 41: 08 02/01/2013	
MTL: -	BY: MGHPC	

BALDOR

D-C MOTOR CONNECTION DIAGRAM, STRAIGHT SHUNT
SH 1 of 1