

**BALDOR® • RELIANCE** 

**Product Information Packet**

**D5060P**

**60HP/1750-2100RPM/DC/366AT**

Part Detail							
Revision:	B	Status:	PRD/A	Change #:		Proprietary:	No
Type:	DC	Prod. Type:		Elec. Spec:	K0068A A	CD Diagram:	15209
Enclosure:	DPFG	Mfg Plant:		Mech. Spec:		Layout:	877-1
Frame:	365-6	Mounting:		Poles:	00	Created Date:	04-09-2015
Base:		Rotation:		Insulation:	F	Eff. Date:	12-06-2017
Field Type:		Literature:		Elec. Diagram:		Replaced By:	

Specs			
Enclosure:	DPFG		
Frame:	365-6AT		
Agency Approvals:	CSA		
Base Indicator:	Rigid		
Duty Rating:	CONT		
Field Winding Type:	STAB SHUNT		
Insulation Class:	F		
Mounting Arrangement:	F1		
Motor Standards:	NEMA		

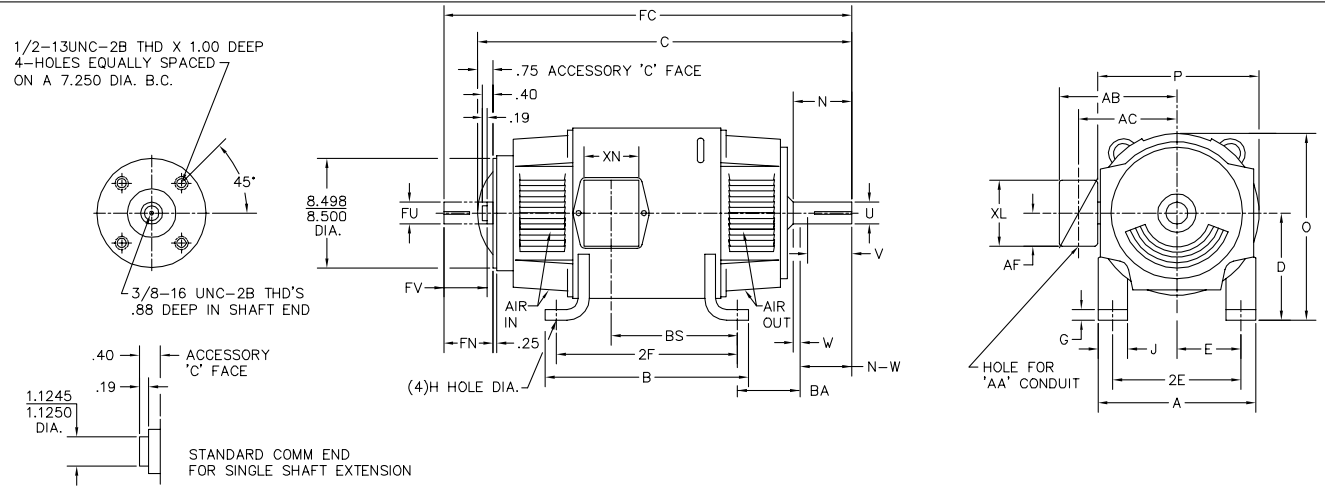
Nameplate NP1734											
CAT.NO.	D5060P			MODEL	T36R8001						
HP	60	RPM	1750/2100		FRAME	365-6AT					
ARM V	500	ARM A	98.60		WOUND	STAB SHUNT					
FLD V	150/300	FLD A	3.50								
CONN		OHMS				CL	F				
ENCL	DPFG	DUTY	CONT			MX AMB	40				
P CODE	C	CTSR				SER.F.	1.0				
S/N				E/S	K0068A A						
	BRUSH:36024-3										
O.D.E. BRG.	6211	D.E. BRG.	6213	BRUSH	36024-3					QTY	

Parts List		
Part Number	Description	Quantity
SA297025	SA T36R8001	1.000 EA
AA016076	AA T36R8001	1.000 EA
036170004DA	DRSCW METRIC NAMEPLATE	4.000 EA
NP1734	NPL,BALDOR DC MTR ALUMINUM	1.000 EA
15209	LABEL CONNECTIONS & TERMINAL MARKIN	1.000 EA
032018004BK	HHCS 5/16-18X1/2 PLATED	4.000 EA
15094	DISHED LOCKWASHER .332 ID, .865 OD	4.000 EA
36004-1	BRUSH ROCKER ASSY	1.000 EA
36024-3SP	BRUSH,360 FR. SERIES E-77 HE	4.000 EA
004824015A	GREASE POLYREX EM	0.600 LB
032018012DK	HHCS 1/2-13X1-1/2 PLTD.	4.000 EA
032018012DK	HHCS 1/2-13X1-1/2 PLTD.	4.000 EA
032130018BA	HSRCS 2-1/4" LG M2	4.000 EA
035000001A	ALFTG 1/8" 1610-BL	1.000 EA
035000001A	ALFTG 1/8" 1610-BL	1.000 EA
36038-14	BRKT, DE, 360DC	1.000 EA
36039-14	BRKT, ODE, 360DC	1.000 EA
HW4500A17	317400 ALEMITE GREASE RELIEF	1.000 EA
HW4500A17	317400 ALEMITE GREASE RELIEF	1.000 EA
HW5100A13	W4627-047 WVY WSHER	1.000 EA
032018004AK	HHCS 1/4-20X1/2 PLATED	2.000 EA
032018004AK	HHCS 1/4-20X1/2 PLATED	4.000 EA
032018004BK	HHCS 5/16-18X1/2 PLATED	4.000 EA
032018004BK	HHCS 5/16-18X1/2 PLATED	44.000 EA

Parts List (continued)		
Part Number	Description	Quantity
032018006DK	HHCS 1/2-13X3/4 PLATED	4.000 EA
15021-1	ACCESSORY FACE COVER FRAME 180-500 SERIE	1.000 EA
15024-4	TERM.BOX CVR. FR-28,32,36DUREX P/N:D618	1.000 EA
15024-5	GASKET, T.BOX COVER	1.000 EA
150449-31	GRD STUD ARG .312DIA STUD	1.000 EA
15599-37	DRIVE SCR,#10 X.37 TYPE UPLATED STEEL	6.000 EA
36018-2	SLD CVR,CE,FR-360 14 GA(.075THK)	1.000 EA
36019-1	GASKET CVR,FE,3/32 THK, ARMSTRONG DC205	3.000 EA
36019-2	GASKET CVR,CE,3/32 THK ARMSTRONG DC205	4.000 EA
36020-1	SMILE CVR,(LOUVERS)FR-36018 GA C.R. STEE	1.000 EA
36057-1	VENT CVR,LVR,FE,FR-360 18 GA(.048THK)	3.000 EA
36057-2	VENT CVR,LUVR,CE,FR-360 18 GA(.048THK)	3.000 EA
36113	TERM BOX HOLE COVER FR 36 SERIES #16 GA	1.000 EA
36116-1	TERM.BOX BASE FR-360 DUREX P/N:3BR	1.000 EA
36246	GASKET,TERM.BOX,FR.360 1/8 THK ARMSTRONG	1.000 EA
36246	GASKET,TERM.BOX,FR.360 1/8 THK ARMSTRONG	1.000 EA
004824007BTW	SPECIAL PAINT4824-3BVZ	0.300 EA
034180028HA	KEY 5/8X5/8X3-1/2L-445	1.000 EA
PA3100	PACK FOR #3 SKID; CUSTOM	1.000 EA

<b>Accessories</b>		
<b>Part Number</b>	<b>Description</b>	<b>Multiplier</b>
D5060P	60HP/1750-2100RPM/DC/366AT	N2

877-1



FRAME	FOOT MOUNTING						D.E. SHAFT EXTENSION						DRIVE KEY			ACC SHAFT EXTENSION			ACC KEY		FRAME						
	BA	E	2F	G	H	J	N	N-W	U	V	W	KEY-SQ.	KEY-LONG	FN	FU	FV	KEY-SQ.	KEY-LONG	A	B	C	FC	D	O	P		
327AT	5.25	6.25	14.00	.81	.656	3.00	4.40	4.25	2.125	4.00 <sup>3</sup>	.15	.500	3.12	3.94	1.875	3.69	.500	2.81	15.88	15.75	33.50	36.71	8.00 <sup>2</sup>	15.94	15.88		
328AT	5.25	6.25	16.00	.81	.656	3.00	4.40	4.25	2.125	4.00 <sup>3</sup>	.15	.500	3.12	3.94	1.875	3.69	.500	2.81	15.88	17.75	35.38	38.58	8.00 <sup>2</sup>	15.94	15.88		
329AT	5.25	6.25	18.00	.81	.656	3.00	4.40	4.25	2.125	4.00 <sup>3</sup>	.15	.500	3.12	3.94	1.875	3.69	.500	2.81	15.88	19.75	37.38	40.58	8.00 <sup>2</sup>	15.94	15.88		
365AT	5.88	7.00	12.25	.81	.813	3.25	4.94	4.75	2.375	4.50 <sup>3</sup>	.19	.625	3.50	4.62	2.125	4.37	.500	3.13	17.75	13.75	33.69	37.56	9.00 <sup>2</sup>	17.94	17.88		
366AT	5.88	7.00	14.00	.81	.813	3.25	4.94	4.75	2.375	4.50 <sup>3</sup>	.19	.625	3.50	4.62	2.125	4.37	.500	3.13	17.75	15.50	35.88	39.75	9.00 <sup>2</sup>	17.94	17.88		
368AT	5.88	7.00	18.00	.81	.813	3.25	4.94	4.75	2.375	4.50 <sup>3</sup>	.19	.625	3.50	4.62	2.125	4.37	.500	3.13	17.75	19.50	38.88	42.75	9.00 <sup>2</sup>	17.94	17.88		
3610AT	5.88	7.00	22.00	.81	.813	3.25	4.94	4.75	2.375	4.50 <sup>3</sup>	.19	.625	3.50	4.62	2.125	4.37	.500	3.13	17.75	23.50	42.20	46.10	9.00 <sup>2</sup>	17.94	17.88		
3612AT	5.88	7.00	28.00	.81	.813	3.25	4.94	4.75	2.375	4.50 <sup>3</sup>	.19	.625	3.50	4.62	2.125	4.37	.500	3.13	17.75	29.50	46.31	49.10	9.00 <sup>2</sup>	17.94	17.88		

FRAME	CONDUIT BOX							ARM APPROX. WK <sup>2</sup> LBS.FT. <sup>2</sup>	APPROXIMATE WEIGHT
	AA	AB	AC	AF	BS	XL	XN		
327AT	2	12.94	10.32	5.00	11.81	7.88	5.25	8.45	700 <sup>5</sup>
328AT	2	12.94	10.32	5.00	13.68	7.88	5.25	9.67	775 <sup>5</sup>
329AT	2	12.94	10.32	5.00	15.68	7.88	5.25	10.97	884 <sup>5</sup>
365AT	2 1/2	14.06	11.38	5.00	9.06	7.88	5.25	15.61	765 <sup>5</sup>
366AT	2 1/2	14.06	11.38	5.00	11.25	7.88	5.25	18.27	875 <sup>5</sup>
368AT	2 1/2	14.06	11.38	5.00	14.25	7.88	5.25	22.21	1035 <sup>5</sup>
3610AT	3	16.86	13.09	6.53	18.25	11.63	7.76	28.00	1070 <sup>5</sup>
3612AT	3	16.86	13.09	6.53	24.25	11.63	7.76	31.60	1136 <sup>5</sup>

- 1) SHAFT DIAMETERS TO 1.500 TOLERANCE +.0000 - .0005
- SHAFT DIAMETERS ABOVE 1.500 TOLERANCE +.0000 - .0010
- SHAFT DIAMETERS TO 1.625 RUNOUT .002 T.I.R. MAX.
- SHAFT DIAMETERS ABOVE 1.625 RUNOUT .003 T.I.R. MAX.
- 2) 'D' DIMENSION TOLERANCE +.000 - .060
- 3) 'V' DIMENSION IS MAX. HUB LENGTH ON SHAFT
- 4) CONDUIT BOX CAN BE ROTATED IN 90° STEPS ON ITS OWN AXIS.
- 5) TOTAL WEIGHT OF MOTOR.
- 6) ALL DIMENSIONS NOT NOTED ARE NOMINAL DIMENSIONS CONSULT FACTORY FOR TOLERANCES.

FOR F1 OR F2 CONDUIT BOX LOCATION SEE SALES ORDER

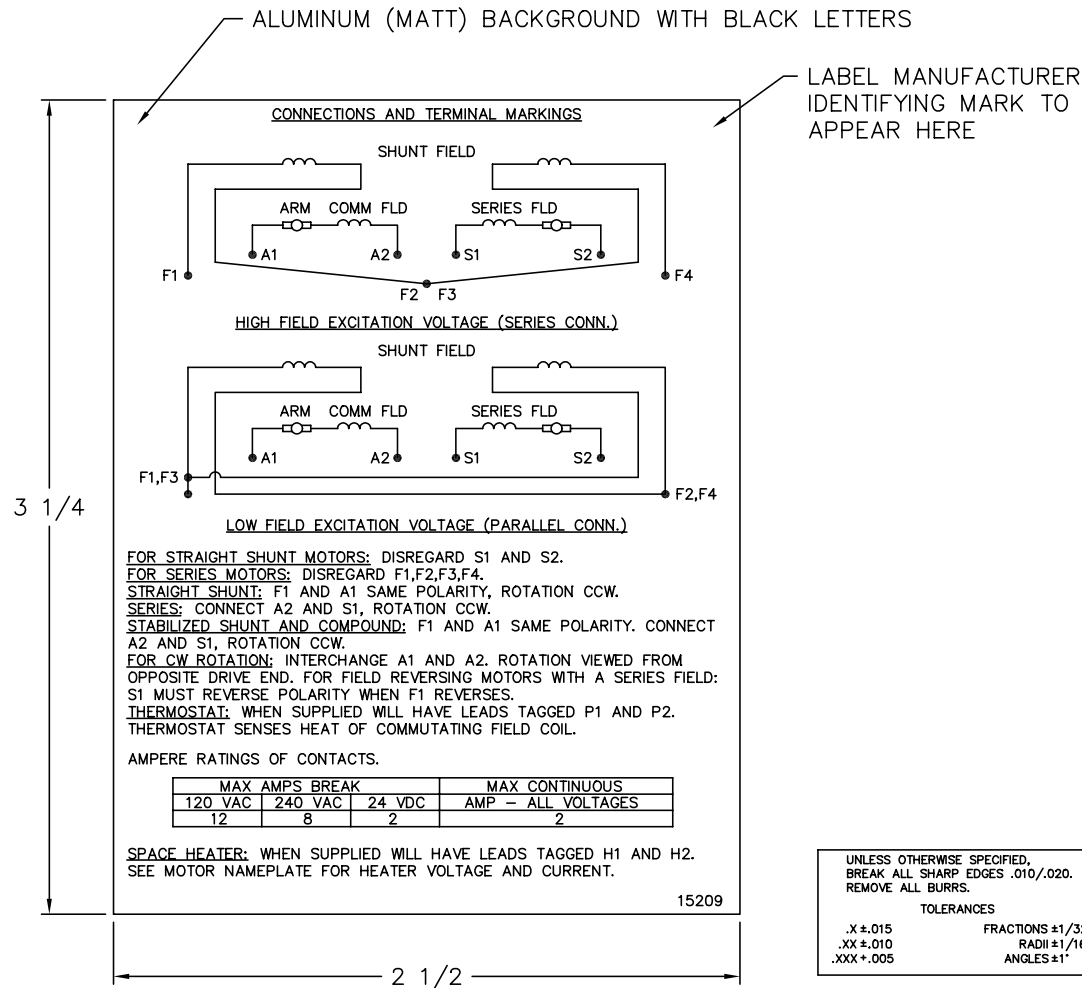
CUSTOMER IS RESPONSIBLE FOR DETERMINING THAT BALDOR'S PRODUCT WILL PERFORM SUITABLY IN THE INTENDED APPLICATION.

REV. DESC: RELOAD TO BUS	VERSION: 02	TDR: 000000773327
REV. LTR: C	REVISED: 10:43:23 11/09/2012	BY: RGGWT
FILE: \RGG\00019\101		
MTL: -		

**BALDOR**  
DIM SHEET  
SH 1 of 1

877-1

15209



**NOTE:**  
 MATERIAL .005 MINIMUM FULL HARD ALUMINUM DULL FINISH.  
 TEMP. RANGE -20°C TO +125°C MAXIMUM.  
 FOR INDOOR AND OUTDOOR MOUNTING BACK.  
 METAL, PRESSURE SENSITIVE BACK. MUST MEET CSA STANDARD.  
 THE CSA IDENTIFYING MARK OF THE LABEL MANUFACTURER MUST APPEAR IN THE UPPER RIGHT HAND CORNER AS INDICATED.

MATL: NOTED

REV: G CHANGE ALL "NAMEPLATE" TEXT TO "LABEL"

60Z91

SCALE: -

BY: BKW

REVISED: 02/19/97

FILE: CHB00002485

TDR: 0115147

**BALDOR ELECTRIC Co.**

LABEL, CONNECTIONS AND TERMINAL MARKINGS DC

15209



Marketing maintained PDF of MN605:

<http://www.baldor.com/support/Literature/Load.ashx/MN605?ManNumber=MN605>