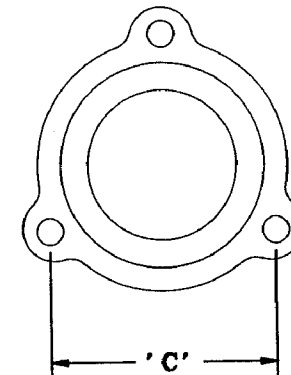
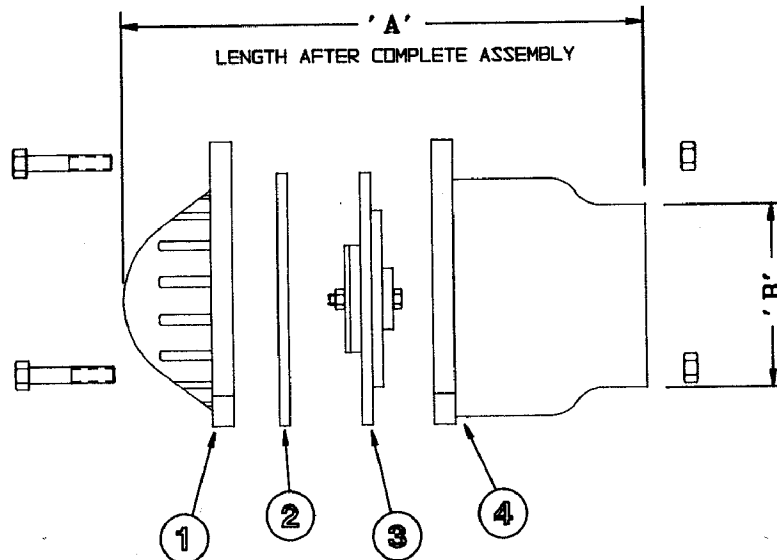
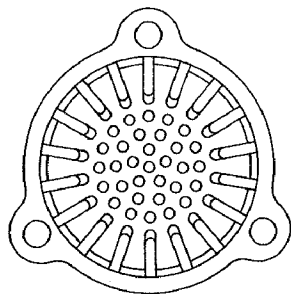


FOOT VALVES



The Right Connection™



2.) THE LEATHER VALVE LOCATED IN THE FLAPPER VALVE ASSEMBLY MAY BE PURCHASED AS A SINGLE REPLACEMENT PART.
1.) 3 BOLTS SECURES THE COMPLETED ASSEMBLY.

NOTES:

ITEM	DESCRIPTION	MATERIAL	QTY
4	THREADED END	IRON	1
3	FLAPPER VALVE ASSY (5 COMPONENTS)	2 IRON PLATES; 1 LEATHER WASHER; 1 LEATHER VALVE; 1 BOLT SECURING ASSY	1
2	SEAT PLATE	IRON	1
1	STRAINER	IRON	1

BILL OF MATERIALS

SIZE	PAINTED	GALVANIZED	'A'	'B'	'C'
8"	DFVS80	GFV80	15.3/4	9.3/4	13.5/8
6"	DFVS60	GFV60	10.1/8	7.31/32	10.11/32
4"	DFVS40	GFV40	8.19/32	5.3/4	8.7/8
3"	DFVS35	GFV35	9.1/8	4.1/4	7.1/16
2.1/2"	DFVS30	GFV30	5.7/8	3.5/8	5.5/8
2"	DFVS25	GFV25	5.5/16	3.1/4	5.5/8
1.1/2"	DFVS20	GFV20	4.1/16	2.17/32	4.1/8
	ASSEMBLY PART NUMBER				

TABULATION OF DIMENSIONS

AGREEMENT TO MAINTAIN CONFIDENTIALITY

This drawing is owned by Dixon Valve & Coupling Co. and shall be returned upon demand. It is loaned on condition that it shall not be copied or reproduced or submitted to others without the owners consent. In accepting it subject to this condition the recipient further agrees that this drawing or any design detail or concept disclosed herein shall not be used in any way detrimental to or in competition with the Owner. If the recipient does not agree to the terms of this agreement, they shall return this drawing immediately.

DIXON VALVE & COUPLING CO. U. S. A.

TITLE			
FOOT VALVES			
SCALE:	DRAWN BY:	ENG CHECK:	APPROVAL:
NONE	Dixon		<i>[Signature]</i>
DATE:			FOOT VALVES
SEE B/M			