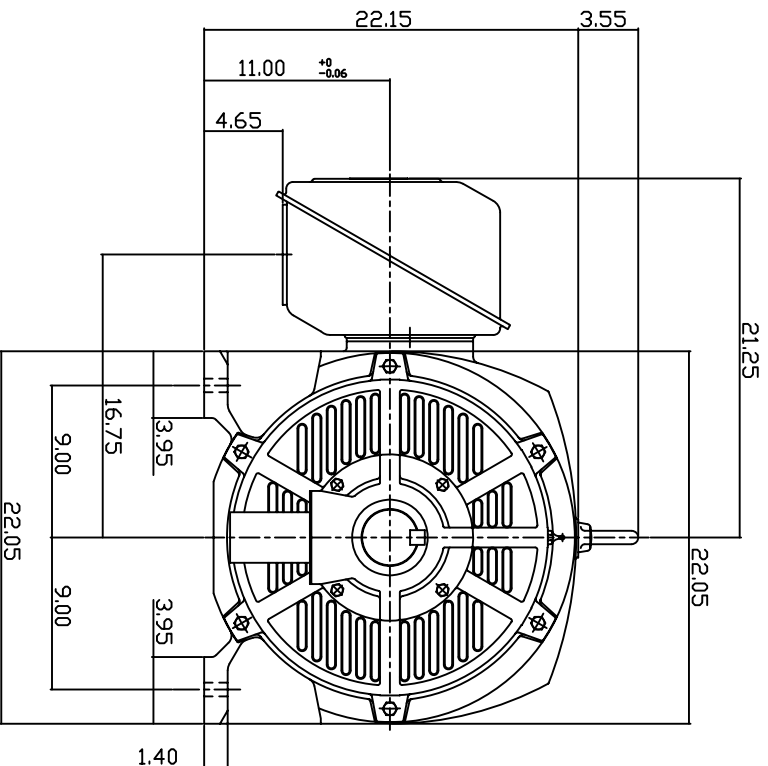
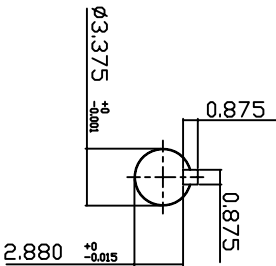
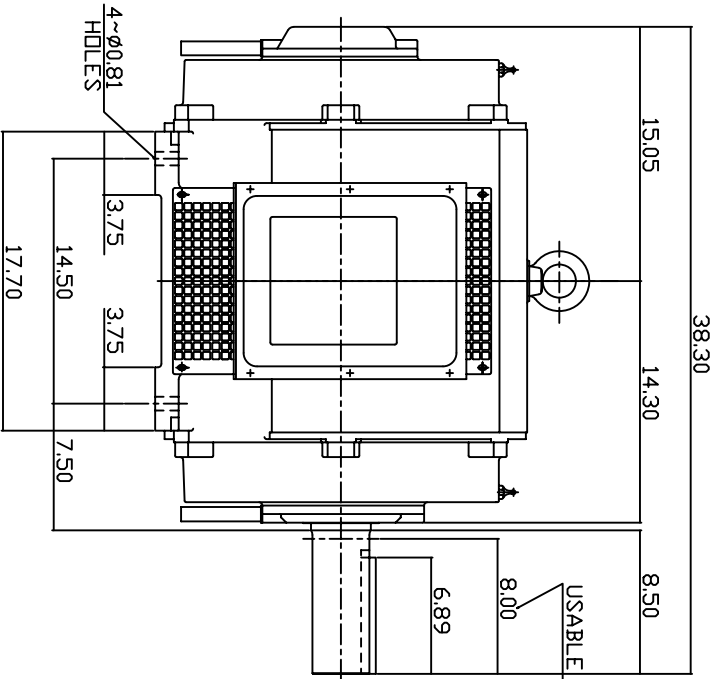


TYPE	OUTPUT		POLE	TIME RATING	VOLTAGE	Hz	SYN/SPEED R.P.M
	HP.	KW.					
ASHH	100	75	6	CDNT.	<b>190/380</b>	<b>50</b>	<b>1000</b>

DRIP PROOF TYPE, SQUIRREL-CAGE ROTOR



NOTE:

1. DIMENSIONS IN INCH.
2. FRAME ND444T
3. F CLASS INSULATION, S.F.1.0
4. FOR BELT DRIVE APPLICATIONS
5. BEARING SIZE: DRIVE END: NU318  
NON-DRIVE END: 6316
6. MOTOR APPROX. WEIGHT: 1170 LBS

TB-56SC

DVN.	W.LLIN	MAR. 26. 2003
CHKD.	W.LLIN	MAR. 26. 2003
APPD.	C.WANG	MAR. 26. 2003

DATE  
February 24, 2007  
CATALOG NO.  
DHPI006R-50

OUTLINE DIMENSIONS  
3-PHASE INDUCTION MOTOR



DWG NO. 3A040T259  
REV: 00