

BALDOR® • RELIANCE 

Product Information Packet

ECTM4314T

60HP, 1780RPM, 3PH, 60HZ, 364T, 1462M, TEAO, F1

Part Detail							
Revision:	N	Status:	PRD/A	Change #:		Proprietary:	No
Type:	AC	Elec. Spec:	A36WG0762	CD Diagram:	416820-002	Mfg Plant:	
Mech. Spec:		Layout:	617431-836	Poles:	04	Created Date:	10-19-2010
Base:		Eff. Date:	08-10-2017	Leads:	3#4,6#6		Y

Specs			
Catalog Number:	ECTM4314T	Feedback Device:	NO FEEDBACK
Enclosure:	TEAO	Heater Indicator:	No Heater
Frame:	364T	Insulation Class:	F
Frame Material:	Iron	Inverter Code:	Not Inverter
Output @ Frequency:	60.000 HP @ 60 HZ	KVA Code:	G
Synchronous Speed @ Frequency:	1800 RPM @ 60 HZ	Lifting Lugs:	Standard Lifting Lugs
Voltage @ Frequency:	460.0 V @ 60 HZ	Motor Lead Quantity/Wire Size:	3 @ 4 AWG
	230.0 V @ 60 HZ	Motor Type:	A36062M
XP Class and Group:	None	Mounting Arrangement:	F1
XP Division:	Not Applicable	Power Factor:	87
Agency Approvals:	CSA EEV	Pulley End Bearing Type:	Ball
Auxillary Box:	No Auxillary Box	Pulley Face Code:	Standard
Base Indicator:	Rigid	Shaft Ground Indicator:	No Shaft Grounding
Bearing Grease Type:	Polyrex EM (-20F +300F)	Shaft Rotation:	Reversible
Current @ Voltage:	136.000 A @ 230.0 V	Shaft Slinger Indicator:	No Slinger
	68.000 A @ 460.0 V	Speed Code:	Single Speed
Design Code:	B	Motor Standards:	NEMA
Drip Cover:	No Drip Cover	Starting Method:	Direct on line

Duty Rating:	CONT	Thermal Device - Bearing:	NONE (OLD)
		Thermal Device - Winding:	None

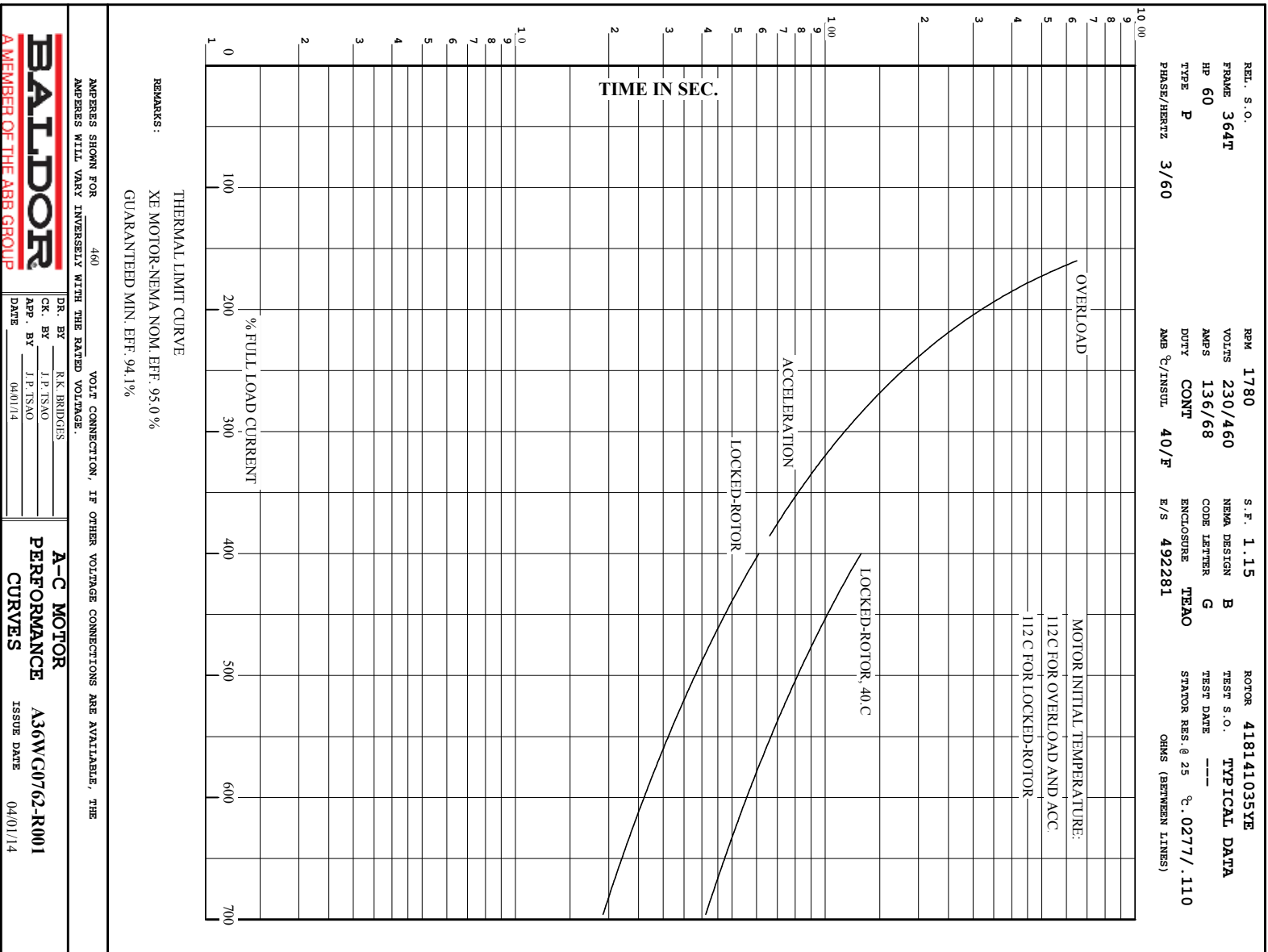
Nameplate 000613007EW										
CAT.NO.	ECTM4314T			SPEC NO.	P36G3418					
HP	60	AMPS	136/68		VOLTS	230/460		DESIGN	B	
FRAME	364T	RPM	1780		HZ	60	AMB	40	SF	1.15
DRIVE END BEARING	65BC03JGG30A			PH	3	DUTY	CONT		INSUL.CLASS	F
OPP D.E. BEARING	65BC03JGG30A			TYPE	P	ENCL	TEAO		CODE	G
D.E.BRG.DATA	6313			POWER FACTOR	87		NEMA NOM EFFICIENCY	95		
O.D.E.BRG.DATA	6313			MAX CORR KVAR	10.0		GUARANTEED EFFICIENCY	94.5		
3/4 LOAD EFF.	95.3			NEMA NOM/CSA QUOTED EFF			MOTOR WEIGHT			
SER.NO.										

Nameplate 000901002AAA	
SUIT FOR 208 V @ 149 FLA	
1000 MIN FPM @ RATED HP AND S F	

Parts List		
Part Number	Description	Quantity
SA207169	SA P36G3418	1.000 EA
RA194436	RA P36G3418	1.000 EA
000613006PU	N/P (RELEASE QTY 10,000) UL CSA LABEL	1.000 EA
000613007EW	N/P BALDOR	1.000 EA
000692000VD	LABEL WARNING	1.000 EA
000901002AAA	N/P BLANK (RELEASE QTY 1,500)	1.000 EA
421948032	LABEL, MYLAR	1.000 EA
004824015A	GREASE POLYREX EM	0.544 LB
032018012DK	HHCS 1/2-13X1-1/2 PLTD.	2.000 EA
032018016DK	HHCS 1/2-13X2L PLTD.	2.000 EA
032018024CK	HHCS 3/8-16X3 PLTD.	3.000 EA
609013022A	LUG,LIFTING	2.000 EA
032018024CK	HHCS 3/8-16X3 PLTD.	3.000 EA
034017016AE	LCKW 1/2 304 S.S.	2.000 EA
034690002AB	PPLG 1/4" PLTD.	1.000 EA
034690001AB	1/8" NPT SQHDPLG	1.000 EA
034690001AB	1/8" NPT SQHDPLG	2.000 EA
085922073P	BRKT 360 085922072WCC KB	1.000 EA
410700004F	WSHR	1.000 EA
412118006A	DRAIN	1.000 EA
032018012DK	HHCS 1/2-13X1-1/2 PLTD.	4.000 EA
034690002AB	PPLG 1/4" PLTD.	1.000 EA
034690001AB	1/8" NPT SQHDPLG	1.000 EA
085922073X	BRKT 360 SPECIAL DRAIN & LIP SEAL	1.000 EA

Parts List (continued)		
Part Number	Description	Quantity
034690001AB	1/8" NPT SQHDPLG	2.000 EA
415028001AH	SEAL 360/400	1.000 EA
415045002E	SLGR	1.000 EA
HW4600G56	DOME SLINGER, 7.875 OD X 2.370/2.300 ID	1.000 EA
412118006A	DRAIN	1.000 EA
423709011C	WASHER	3.000 EA
032018010CK	HHCS 3/8-16X1-1/4 PLTD.	4.000 EA
033512008LB	HHTTS 1/4-20X1 PLATED	4.000 EA
034000014AB	WSH ID.406 OD.812 TH.065	4.000 EA
034600035AA	BUSH 3 TO 2-1/2 BLACK	1.000 EA
034690001AB	1/8" NPT SQHDPLG	2.000 EA
048897010DG	PLUG,ODE BRKT - 360	1.000 EA
065776000C	TERBD 320-400	1.000 EA
067053000B	GASK 320-400	1.000 EA
076708164	CBOX E360/400 CAST IRON 076708000BB	1.000 EA
076709000A	C/B Cover - 360	1.000 EA
415000103H	415000103H	1.000 EA
MG1025G05	WILKOFASST, 789.227, MED. GRAY CHAR. MET.	0.250 GA
033775004EA	DRSCR #6-1/4 304 S.S.	4.000 EA
034180034HA	KEY 5/8X5/8X4-1/4 L	1.000 EA
MG1500G03-5	LACQUER PRIMER, GRAY	0.063 GA
L482401016	SPRAY AC-29-7S	0.025 GA
032509020C	CARRIAGE BOLT - 360	3.000 EA
000692000FF	N/P	1.000 EA

14PA1000	PACKAGING 314 GROUP COMBINED PRINT	1.000 EA
032018005DL	1/2-13 X 5/8 SILICON BRONZE HHCS	1.000 EA



REL. S.O.	FRAME	HP	TYPE	PHASE/ HERTZ	RPM	VOLTS
	364T	60	P	3/60	1780	230/460
AMPS	DUTY	AMB °C/ INSUL.	S.F.	NEMA DESIGN	CODE LETTER	ENCL.
136/68	CONT	40/F	1.15	B	G	TEAO
E/S	ROTOR	TEST S.O.	TEST DATE	STATOR RES (25 °C OHMS (BETWEEN LINES))		
492281	418141035YE	---	---	.0277/.110		

PERFORMANCE


LOAD	HP	AMPERES	RPM	POWER FACTOR %	EFFICIENCY %
NO LOAD	0	20.1	1800	4.67	0
1/4	15.0	25.8	1795	58.6	93.0
2/4	30.0	37.5	1791	78.7	95.2
3/4	45.0	51.9	1786	85.0	95.3
4/4	60.0	68.0	1781	87.0	95.0
5/4	75.0	85.1	1775	87.5	94.3

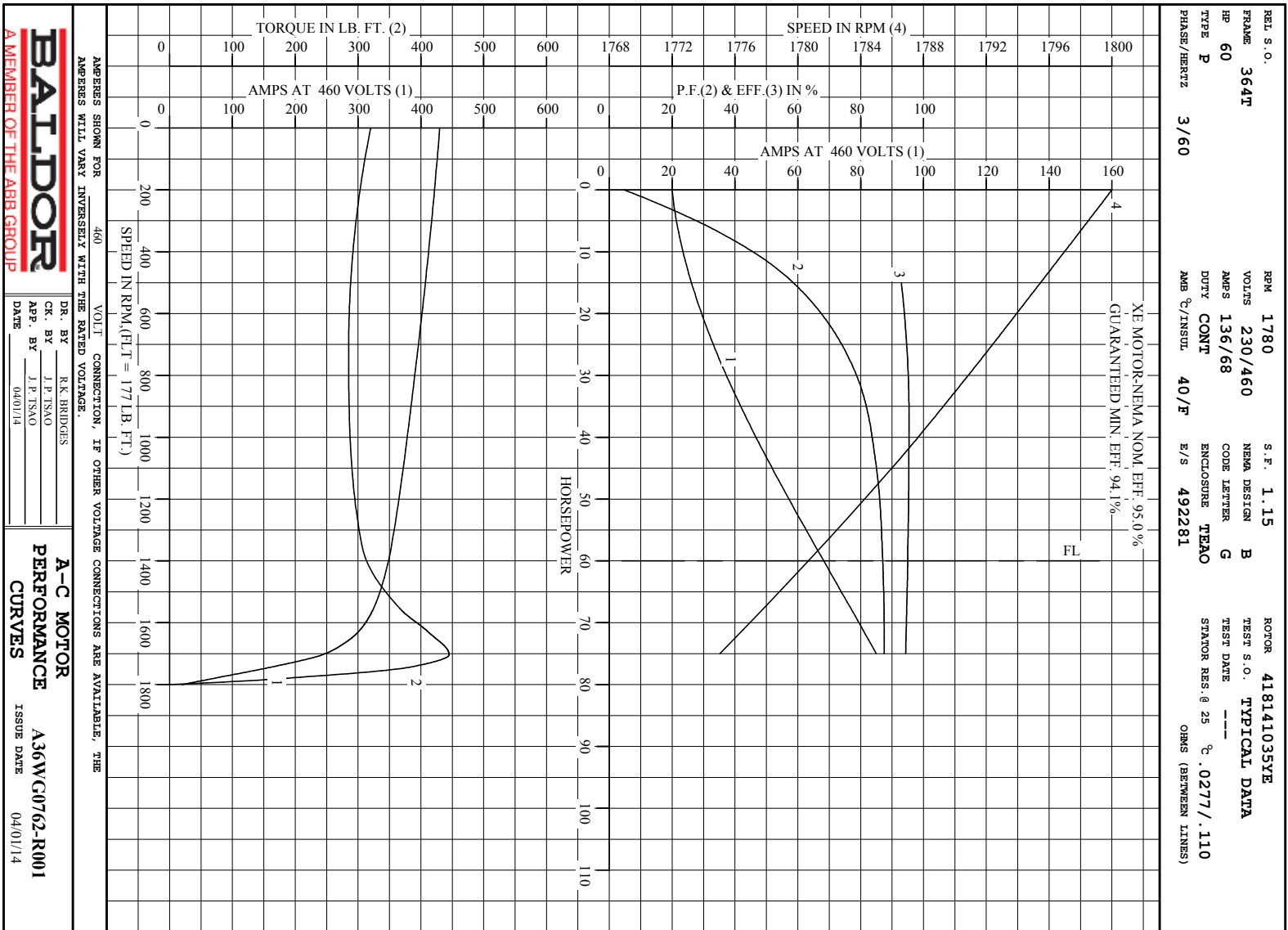
SPEED TORQUE

	RPM	TORQUE % FULL LOAD	TORQUE LB.-FT.	AMPERES
LOCKED ROTOR	0	181	320	430
PULL UP	720	161	285	395
BREAKDOWN	1703	251	445	244
FULL LOAD	1781	100	177	68.0

AMPERES SHOWN FOR 460. VOLT CONNECTION. IF OTHER VOLTAGE CONNECTIONS ARE AVAILABLE, THE AMPERES WILL VARY INVERSELY WITH THE RATED VOLTAGE

REMARKS: TYPICAL DATA
 XE MOTOR-NEMA NOM. EFF. 95.0 %
 GUARANTEED MIN. EFF. 94.1%

 A MEMBER OF THE ABB GROUP	DR. BY R.K. BRIDGES CR. BY J.P. TSN0 APP. BY J.P. TSN0 DATE 04/01/14	A-C MOTOR PERFORMANCE DATA A36MG0762-R001 ISSUE DATE 04/01/14
--	---	--

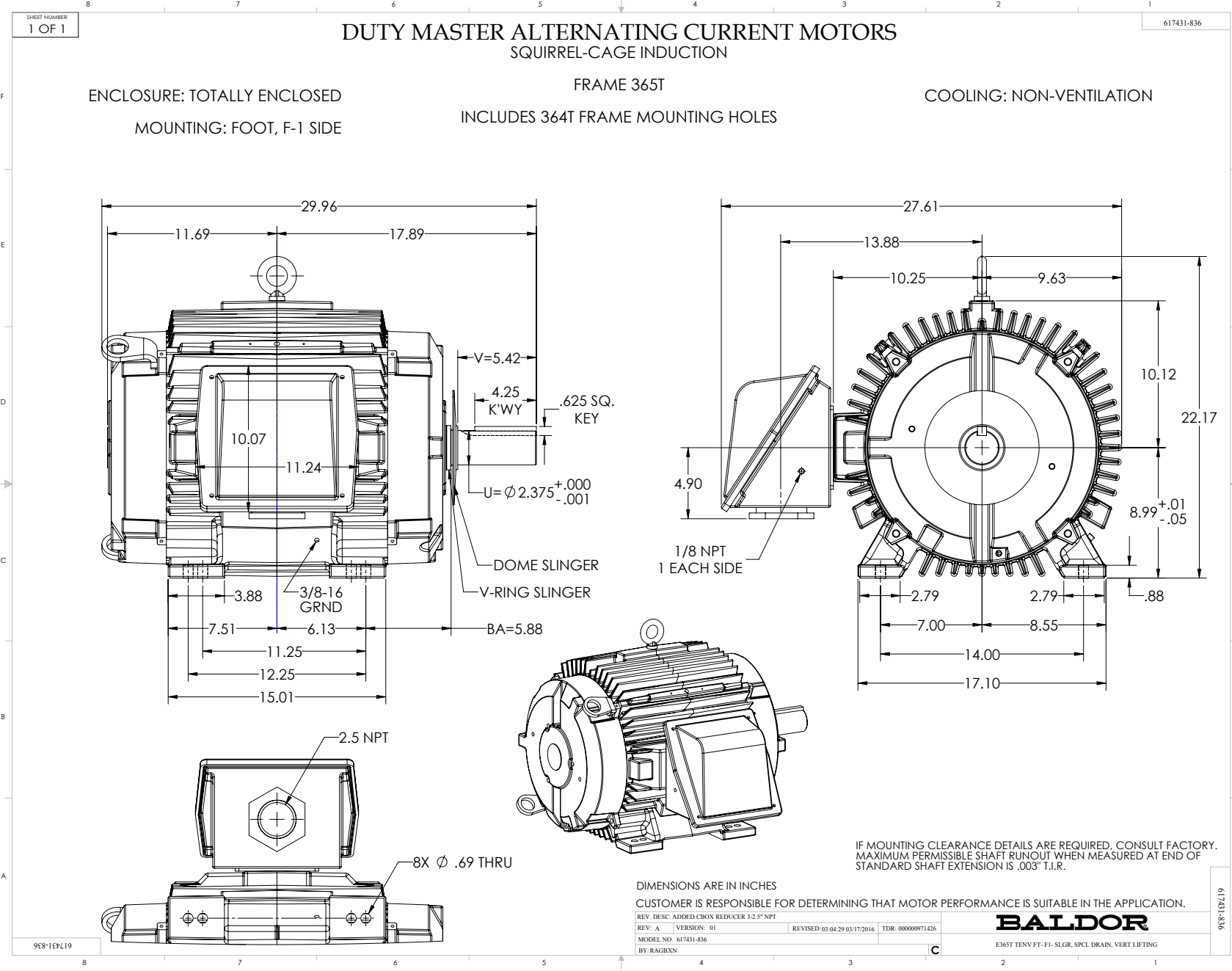


BALDOR
A MEMBER OF THE ABB GROUP

DR. BY R. K. BRIDGES
CK. BY J. P. TSAO
APP. BY J. P. TSAO
DATE 04/01/14

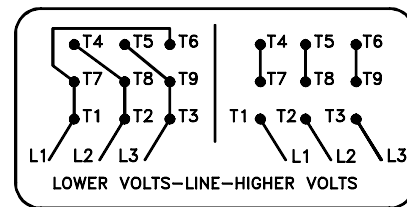
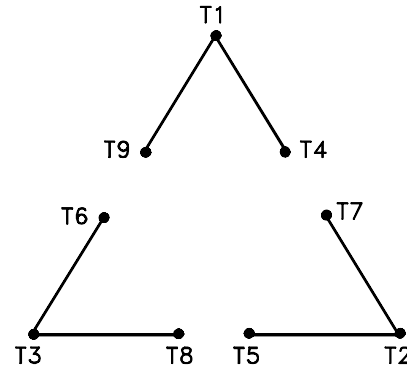
A-C MOTOR
PERFORMANCE A36W0762-R001
CURVES ISSUE DATE 04/01/14

Printed on 4/1/14 14:05 @ zagsun



416820-002

A-C MOTOR
 CONNECTION DIAGRAM
 STANDARD 9 LEAD DELTA-CONNECTED



(N.P. 1575-B)

416820-002

REV. DESC: LOADED TO BUS, C/R 335225		
REV. LTR: -	VERSION: 00	TDR: 000000538207
FILE: \MGA\00000\661	REVISED: 10: 47: 51 04/30/2010	
MTL: -	BY: RAGRA	

BALDOR

CONN DIAG - STANDARD 9 LEAD, DELTA-CONNECTED

SH 1 of 1

Marketing maintained PDF of MN408:

<http://www.baldor.com/support/Literature/Load.ashx/MN408?ManNumber=MN408>

Marketing maintained PDF of MN416:

<http://www.baldor.com/support/Literature/Load.ashx/MN416?ManNumber=MN416>