

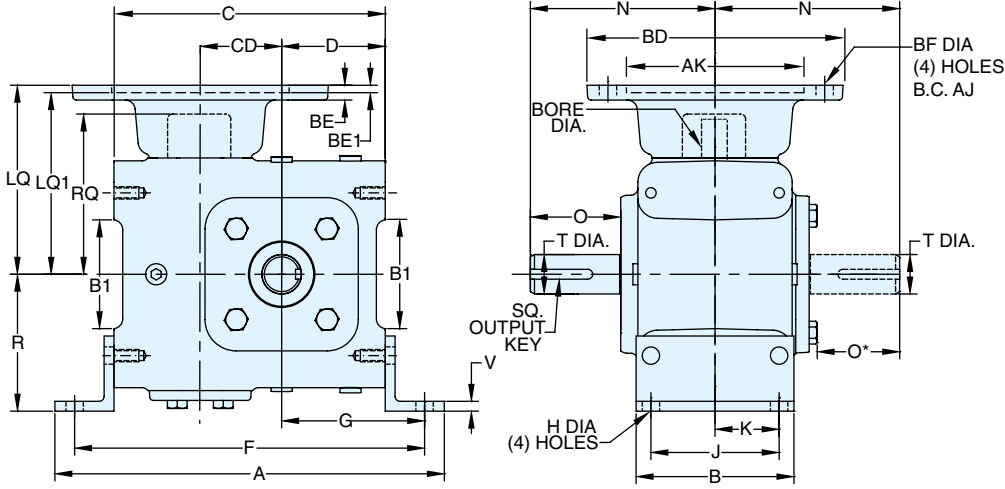
# ELECTRA-GEAR

## EL SERIES

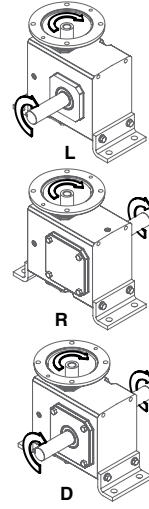
### DIMENSIONS

STYLES: JMQ, JM, J

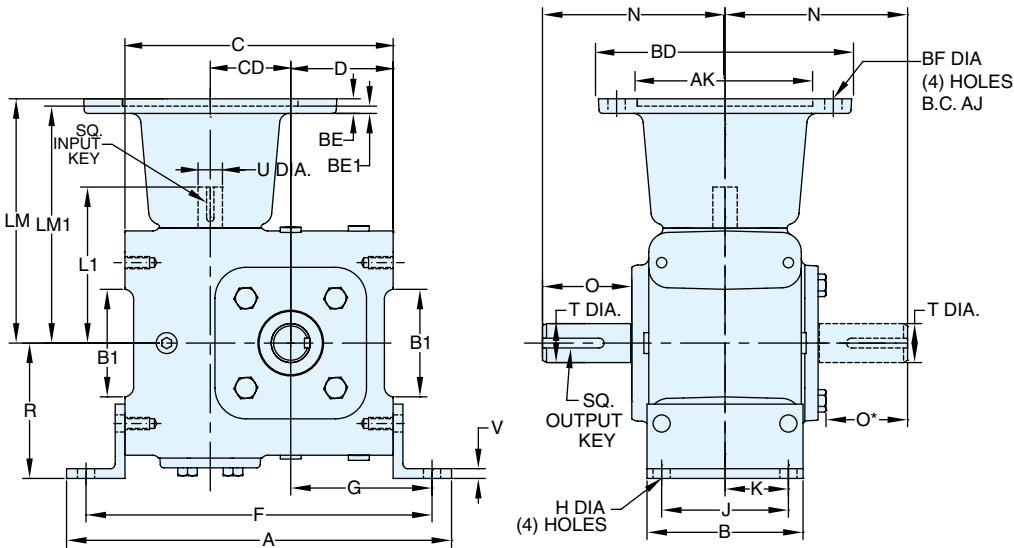
#### STYLE JMQ



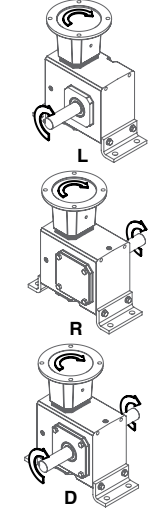
#### ASSEMBLIES



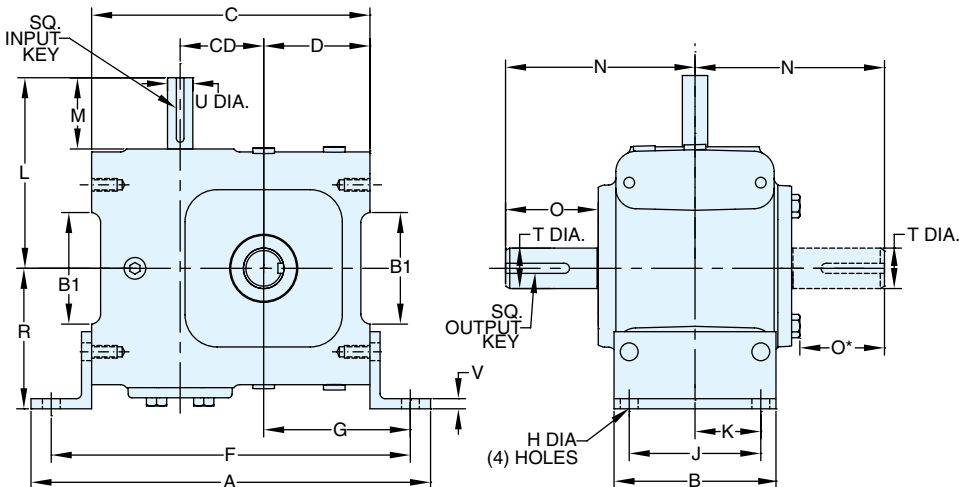
#### STYLE JM



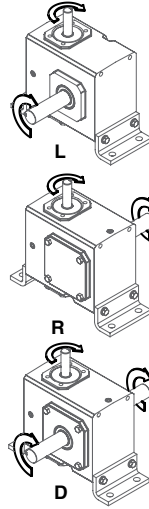
#### ASSEMBLIES



#### STYLE J



#### ASSEMBLIES



REVERSE ALL ARROWS FOR OPPOSITE INPUT SHAFT ROTATION. CONTACT FACTORY FOR OTHER MOUNTINGS OR ASSEMBLY POSITIONS.

**STYLE JMQ, JM, J DIMENSIONS (Inches)**

Size	A	B	B1	C	CD	D	F	G	H	J	K	L	M	N	O	O*	R	V	T +0.000 -0.0015	U +0.000 -0.0015	Input Key (Style J only)*	Input Key (Style JM only)*	Output Key
EL813	7.16	2.91	--	4.66	1.33	1.72	6.41	2.60	0.34	2.00	1.00	3.82	1.87	4.00	2.16	1.96	2.94	0.19	0.625	0.500	1/8 x 1.00	1/8 x 1.00	3/16 x 1.38
EL818	8.88	3.56	2.48	5.86	1.75	2.31	7.88	3.32	0.38	2.94	1.47	4.35	1.78	4.39	2.05	1.85	2.97	0.38	0.750	0.625	3/16 x 1.38	3/16 x .500	3/16 X 1.38
EL821	9.87	4.00	2.76	6.88	2.06	2.63	8.87	3.62	0.44	3.25	1.63	4.71	1.76	4.68	2.29	2.09	3.47	0.25	1.000	0.625	3/16 X 1.38	3/16 x .500	1/4 x 1.44
EL824	10.31	4.00	--	6.94	2.38	2.50	9.19	3.63	0.69	2.88	1.44	5.51	2.45	5.14	2.66	2.46	4.06	0.38	1.125	0.750	3/16 X 1.63	3/16 x .500	1/4 X 1.62
EL826	12.00	4.38	4.21	8.00	2.63	3.25	10.50	4.50	0.50	3.38	1.69	6.07	2.45	5.63	2.73	2.53	4.03	0.31	1.250	0.750	3/16 x 1.63	3/16 x .500	1/4 X 1.62
EL830	12.94	5.13	4.50	8.94	3.00	3.50	11.44	4.75	0.56	4.13	2.06	6.56	2.31	6.62	3.60	3.37	4.81	0.80	1.500	0.875	3/16 x 1.63	3/16 x .500	3/8 X 2.25
EL832	14.50	5.13	4.53	10.50	3.25	4.00	13.00	5.25	0.56	4.13	2.06	6.75	2.31	6.62	3.60	3.37	5.25	0.38	1.625	0.875	3/16 x 1.63	3/16 x .500	3/8 X 2.25
EL842	17.50	5.13	5.71	11.69	4.25	4.50	14.50	5.91	0.81	3.75	1.88	8.72	3.47	8.12	4.50	4.22	5.63	0.50	1.750	1.250	1/4 x 2.50	1/4 x 2.50	1/2 x 2.50
EL852	20.25	6.50	7.82	12.25	5.25	4.25	16.75	6.50	0.81	5.25	2.63	10.03	3.38	9.06	4.78	4.50	7.63	0.50	2.000	1.250	1/4 X 3.00	1/4 x 3.00	1/2 x 2.50
EL860	22.25	7.00	--	14.25	6.00	5.00	18.75	7.63	0.94	5.38	2.69	10.99	3.00	10.75	5.25	5.25	8.38	0.50	2.250	1.500	3/8 x 3.00	3/8 x 2.75	5/8 X 4.00

**MOTOR MOUNTING DIMENSIONS**

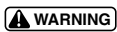
**NEMA DIMENSIONS (Inches)**

Size	LM 56C/140TC	LM1 180TC / 210TC	L1 56C/140TC	L1 180TC / 210TC	LQ 56C/140TC	LQ1 180TC / 210TC	RQ 56C/140TC	RQ 180TC / 210TC
EL813	6.07	--	3.82	--	3.79	--	3.09	--
EL818	5.89	--	3.64	--	4.42	--	3.59	--
EL821	6.26	--	4.00	--	4.79	--	4.06	--
EL824	6.48	7.30	4.29	4.29	4.77	4.77	4.09	4.09
EL826	7.04	7.86	4.88	4.88	5.33	5.33	4.82	4.82
EL830	7.67	8.31	5.38	5.38	5.97	5.97	5.32	5.32
EL832	7.86	8.50	5.56	5.56	6.16	6.16	5.51	5.51
EL842	11.25	12.53	9.57	9.57	6.45	6.45	6.04	6.04
EL852	12.65	13.93	10.88	10.88	7.85	7.85	7.35	7.35
EL860	--	11.94	10.99	10.99	--	--	--	--

**NEMA DIMENSIONS (Inches)**

Frame	AJ	AK	BD	BE	BE1	Bore Dia.	Keyway♦	BF
56C	5.88	4.50	6.50	0.38	N/A	.625	3/16 X 3/32	0.41
140TC	5.88	4.50	6.50	0.38	N/A	.875	3/16 X 3/32	0.41
180TC	7.25	8.50	9.00	N/A	0.50	1.125	1/4 X 1/8	0.53
210TC	7.25	8.50	9.00	N/A	0.50	1.375	5/16 X 5/32	0.53

- \* Applies to double output shaft
- ♦ Keyway width by depth
- \* Solid input shaft and C-faced coupling input reducers have different input shaft length and key.



For safety, purchaser or user should provide protective guards over shaft extensions and any couplings, sheaves and belts, sprockets and chains, etc., mounted thereon.

**INTEGRAL GEARMOTOR INPUTS AVAILABLE**

— Contact Factory for price and availability.

**EL SERIES MOUNTING DIMENSIONS**

- EL Series mounting dimensions are the same as the original ELECTRA-GEAR product with an option to match the industry standard dimensions of GR Series.
- See page 52 for GR Series dimensions.

**ELECTRA-GEAR INTERCHANGE GUIDE**

Original Style	New Style
JBSC or JBLSC	JMQ
JBC or JBLC	JM
JB or JBL	J
JB + "KV" Kit	J + "KV" Kit

Convert Style J to motorized coupling input using kits shown on page 290.

All dimensions shown are for reference only. Contact Factory for certified dimensions.