

**BALDOR® • RELIANCE** 

**Product Information Packet**

**FDL3737TM**

**10HP,1730RPM,1PH,60HZ,215T,3752LC,TEFC,F**

Part Detail							
Revision:	K	Status:	PRD/A	Change #:		Proprietary:	No
Type:	AC	Elec. Spec:	37WGT913	CD Diagram:	CD1336A02	Mfg Plant:	
Mech. Spec:	37N370	Layout:	37LYN370	Poles:	04	Created Date:	12-10-2013
Base:	RG	Eff. Date:	09-07-2016	Leads:	2#10 A PH,3#14 B PH		

Specs			
Catalog Number:	FDL3737TM	KVA Code:	H
Enclosure:	TEFC	Lifting Lugs:	Standard Lifting Lugs
Frame:	215T	Locked Bearing Indicator:	No Locked Bearing
Frame Material:	Steel	Motor Lead Quantity/Wire Size:	2 @ 10 AWG, A PH
Output @ Frequency:	10.000 HP @ 60 HZ	Motor Lead Exit:	Cap Box
Synchronous Speed @ Frequency:	1800 RPM @ 60 HZ	Motor Lead Termination:	Flying Leads
Voltage @ Frequency:	230.0 V @ 60 HZ	Motor Type:	3752LC
XP Class and Group:	None	Mounting Arrangement:	F1
XP Division:	Not Applicable	Power Factor:	96
Agency Approvals:	UR	Product Family:	General Purpose
	CSA	Product Type:	FARM DUTY
Auxillary Box:	No Auxillary Box	Pulley End Bearing Type:	Sealed Bearing
Auxillary Box Lead Termination:	None	Pulley Face Code:	Standard
Base Indicator:	Rigid	Pulley Shaft Indicator:	Standard
Bearing Grease Type:	Polyrex EM (-20F +300F)	Rodent Screen:	None
Blower:	None	Shaft Extension Location:	Pulley End
Current @ Voltage:	39.000 A @ 230.0 V	Shaft Ground Indicator:	No Shaft Grounding
Design Code:	L	Shaft Rotation:	Reversible

<b>Drip Cover:</b>	No Drip Cover	<b>Shaft Slinger Indicator:</b>	Shaft Slinger
<b>Duty Rating:</b>	CONT	<b>Speed Code:</b>	Single Speed
<b>Electrically Isolated Bearing:</b>	Not Electrically Isolated	<b>Motor Standards:</b>	NEMA
<b>Feedback Device:</b>	NO FEEDBACK	<b>Starting Method:</b>	Direct on line
<b>Front Face Code:</b>	Standard	<b>Thermal Device - Bearing:</b>	None
<b>Front Shaft Indicator:</b>	None	<b>Thermal Device - Winding:</b>	None
<b>Heater Indicator:</b>	No Heater	<b>Vibration Sensor Indicator:</b>	No Vibration Sensor
<b>Insulation Class:</b>	F	<b>Winding Thermal 1:</b>	Manual Thermal Overload
<b>Inverter Code:</b>	Not Inverter	<b>Winding Thermal 1 Location:</b>	KO
		<b>Winding Thermal 2:</b>	None

<b>Nameplate NP1280L</b>											
<b>CAT.NO.</b>	FDL3737TM										
<b>SPEC.</b>	37N370T913G1										
<b>HP</b>	10										
<b>VOLTS</b>	230										
<b>AMP</b>	39										
<b>RPM</b>	1730										
<b>FRAME</b>	215T				<b>HZ</b>	60		<b>PH</b>	1		
<b>SER.F.</b>	1.00			<b>CODE</b>	H		<b>DES</b>	L		<b>CL</b>	F
<b>NEMA-NOM-EFF</b>	86.5			<b>PF</b>	96						
<b>RATING</b>	40C AMB-CONT										
<b>CC</b>								<b>USABLE AT 208V</b>			
<b>DE</b>	6307				<b>ODE</b>	6206					
<b>ENCL</b>	TEFC			<b>SN</b>							

Parts List		
Part Number	Description	Quantity
SA274239	SA 37N370T913G1	1.000 EA
RA260826	RA 37N370T913G1	1.000 EA
OC3050F09SP	CAPACITOR 50 MFD 370 VAC	2.000 EA
RE5029	MARS 91423 DOUBLE POLE 230-240V CONTACTO	1.000 EA
TPLED1024SP	THERMAL 1PH 1.5 MAN REF LED945 TDR #5817	1.000 EA
EC1216C06SP	ELEC CAP, 216-259 MFD, 250V, 2.06D X 4.	4.000 EA
37FN3002A01SP	EXFN, PLASTIC, 9.00 OD, 1.155 ID	1.000 EA
HW3200A01	3/8-16X3/4 I-BLT WELDED F/S	1.000 EA
37CB3804A35	37 CPBX W/ 1.38 DIA, MAN THERM, & RELAY	1.000 EA
37GS3015	GASKET, CAPAC BOX	1.000 EA
51XW2520A12	.25-20 X .75, TAPTITE II, HEX WSHR SLTD	4.000 EA
37CB4509	CAPAC BOX LID, STAMPED	1.000 EA
37GS3016	GASKET, CAPAC BOX LID	1.000 EA
51XW0832A07	8-32 X .44, TAPTITE II, HEX WSHR SLTD SE	6.000 EA
HA6003A47	CAPAC CLAMP	1.000 EA
HA6003A45	CAPAC CLAMP - CLIP (WHITE ZINC PLATED)	2.000 EA
51XB1016A07	10-16 X 7/16 HXWSSLD SERTYB	4.000 EA
HA2001A09	SPACER, .218 ID X .937 LG	2.000 EA
RM1015	BOOT FOR MANUAL THERMALS	1.000 EA
51XN1032A28	10-32 X 1 3/4 HX WS SL SR	2.000 EA
XY1032A02	10-32 HEX NUT DIRECTIONAL SERRATION	2.000 EA
51XF2520A08	SCREW, HEX SER SLT HD, ZN 1/4-20 X .50 L	2.000 EA
11XW1032G06	10-32 X .38, TAPTITE II, HEX WSHR SLTD U	1.000 EA
HW3001B01	BRASS CUP WASHER, FOR #10 SCREW	1.000 EA

Parts List (continued)		
Part Number	Description	Quantity
37EP3101A04	FR ENDPLATE, MACH	1.000 EA
13XF0832A08	8-32 X.50 PAN HD,SLTD, TYPE F SCREW, ZIN	6.000 EA
NS2539	INSULATOR FOR 37 FRAMESWITCH (MH1011A10)	1.000 EA
HW5100A06	W2420-025 WVY WSHR (WB)	1.000 EA
37PE3100B33	PUEP ASSEMBLY - ROUTING PUPROSES	1.000 EA
HW4600B51	SEAL 1.375 X 2.125 X 0.313 SINGLE LIP DB	1.000 EA
XY3118A12	5/16-18 HEX NUT DIRECTIONAL SERRATION	4.000 EA
36FN3004A02	EXFN XP PULLEY, ALUM, 7.38 OD, 1.379 ID	1.000 EA
80XN2520A06	1/4-20 X 3/8 SET SCREW	2.000 EA
51XB1214A20	12-14X1.25 HXWSSLD SERTYB	1.000 EA
07FH4007A52	IEC FAN CVR W/NOTCH FOR 37CB3804 CAPAC B	1.000 EA
51XW1032A06	10-32 X .38, TAPTITE II, HEX WSHR SLTD S	3.000 EA
HA1005A02	SLINGER, OD 2.00, ID 1.14, 206 BRG,	1.000 EA
HA1005A07	SLINGER, OD 2.25, ID 1.344, 307 BRG	1.000 EA
37FH4001A06	WASHDOWN IEC FH	1.000 EA
51XW1032A06	10-32 X .38, TAPTITE II, HEX WSHR SLTD S	3.000 EA
HW2501F21	KEY, 5/16 SQ X 2.375	1.000 EA
HA7000A02	KEY RETAINER RING, 1 1/8 DIA, 1 3/8 DIA	1.000 EA
85XU0407S04	4X1/4 U DRIVE PIN STAINLESS	2.000 EA
LB1115N	LABEL,LIFTING DEVICE (ON ROLLS)	1.000 EA
LB1087	LABEL,MANUAL RESET (ROLL LABEL)	1.000 EA
MJ5001A27	32220KN GRAY SEALER *MIN BUY 4 QTS=1GAL	0.001 QT
MJ1000A02	GREASE, POLYREX EM EXXON (USe 4824-15A)	0.050 LB
MG1025C02	WILKOFASG SG, 787.105, TAN	0.028 GA

Product Information Packet: FDL3737TM - 10HP,1730RPM,1PH,60HZ,215T,3752LC,TEFC,F

HA3104A25T	THRUBOLT .31-18 X 14.75 W/SHRINK TUBING	4.000 EA
TP5059	GENERIC THERMAL KIT	1.000 EA
SP5172A65	37 TYPE L TORQ STAT SWITCH CD1336A02 F1	1.000 EA
LD5000A24	LEAD ASSY, ML1400DF10 W/#10 RING 12"	1.000 EA
LC0002	CONNECTION LABEL	1.000 EA
LB1119N	WARNING LABEL	1.000 EA
MN416A01	TAG-INSTAL-MAINT no wire (1200/bx) 5/18	1.000 EA
NP1280L	ALUM FARM DUTY UL CSA CC THERMAL	1.000 EA
37PA1039	PALLET PACK GRP, PRINT PK1026A06	1.000 EA
FE-0000001	ZRTG FE ASSEMBLY	1.000 EA

**AC Induction Motor Performance Data**

Record # 21642 - Typical performance - not guaranteed values

<b>Winding:</b> 37WGT913-R001	<b>Type:</b> 3752LC	<b>Enclosure:</b> TEFC
-------------------------------	---------------------	------------------------

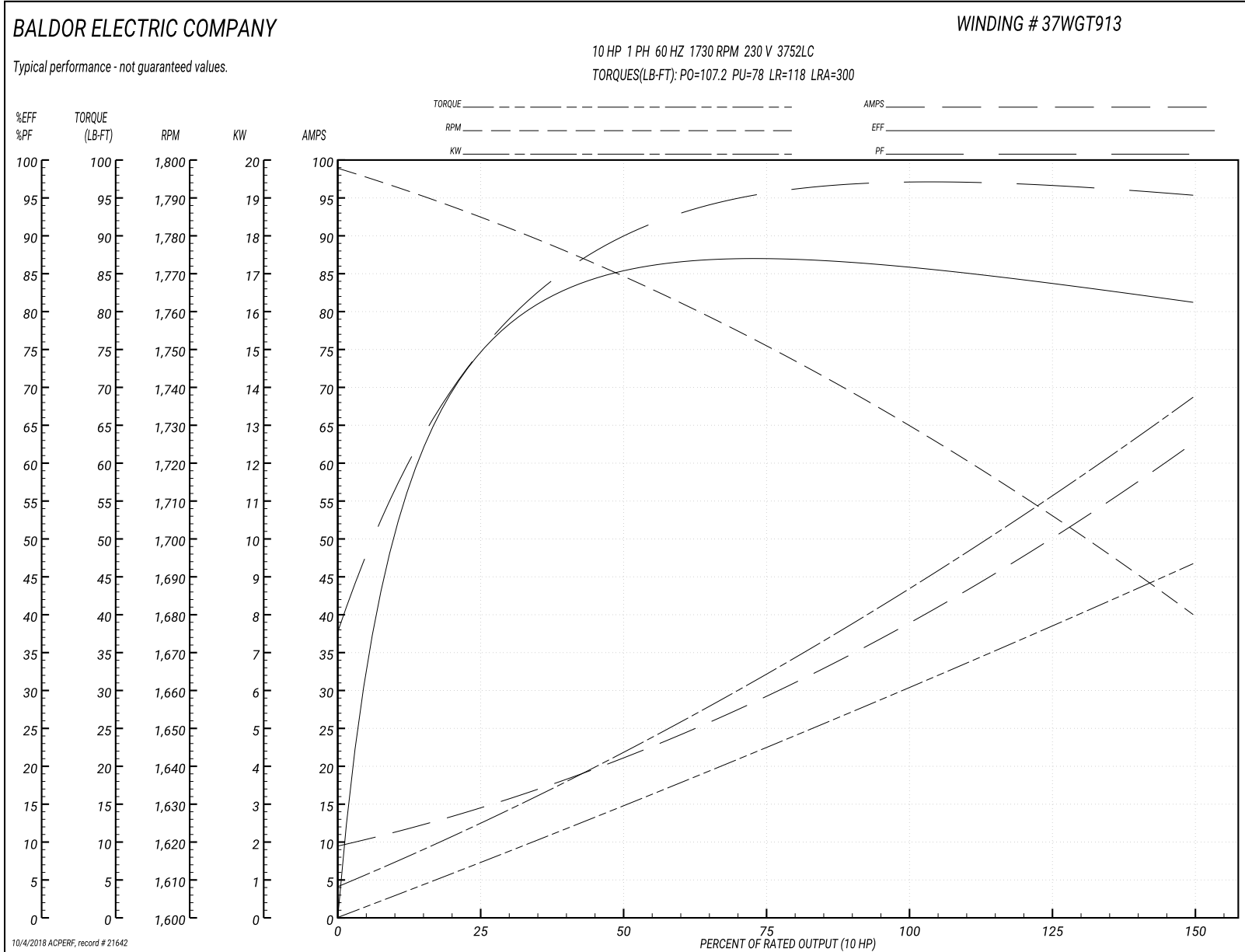
Nameplate Data				230 V, 60 Hz: Single Voltage Motor	
Rated Output (HP)	10			Full Load Torque	30.2 LB-FT
Volts	230			Start Configuration	direct on line
Full Load Amps	39			Breakdown Torque	107.2 LB-FT
R.P.M.	1730			Pull-up Torque	78 LB-FT
Hz	60	Phase	1	Locked-rotor Torque	118 LB-FT
NEMA Design Code	L	KVA Code	H	Starting Current	300 A
Service Factor (S.F.)	1			No-load Current	10 A
NEMA Nom. Eff.	86.5	Power Factor	96	Line-line Res. @ 25°C	0.131 Ω A Ph 0.388 Ω B Ph
Rating - Duty	40C AMB-CONT			Temp. Rise @ Rated Load	93°C

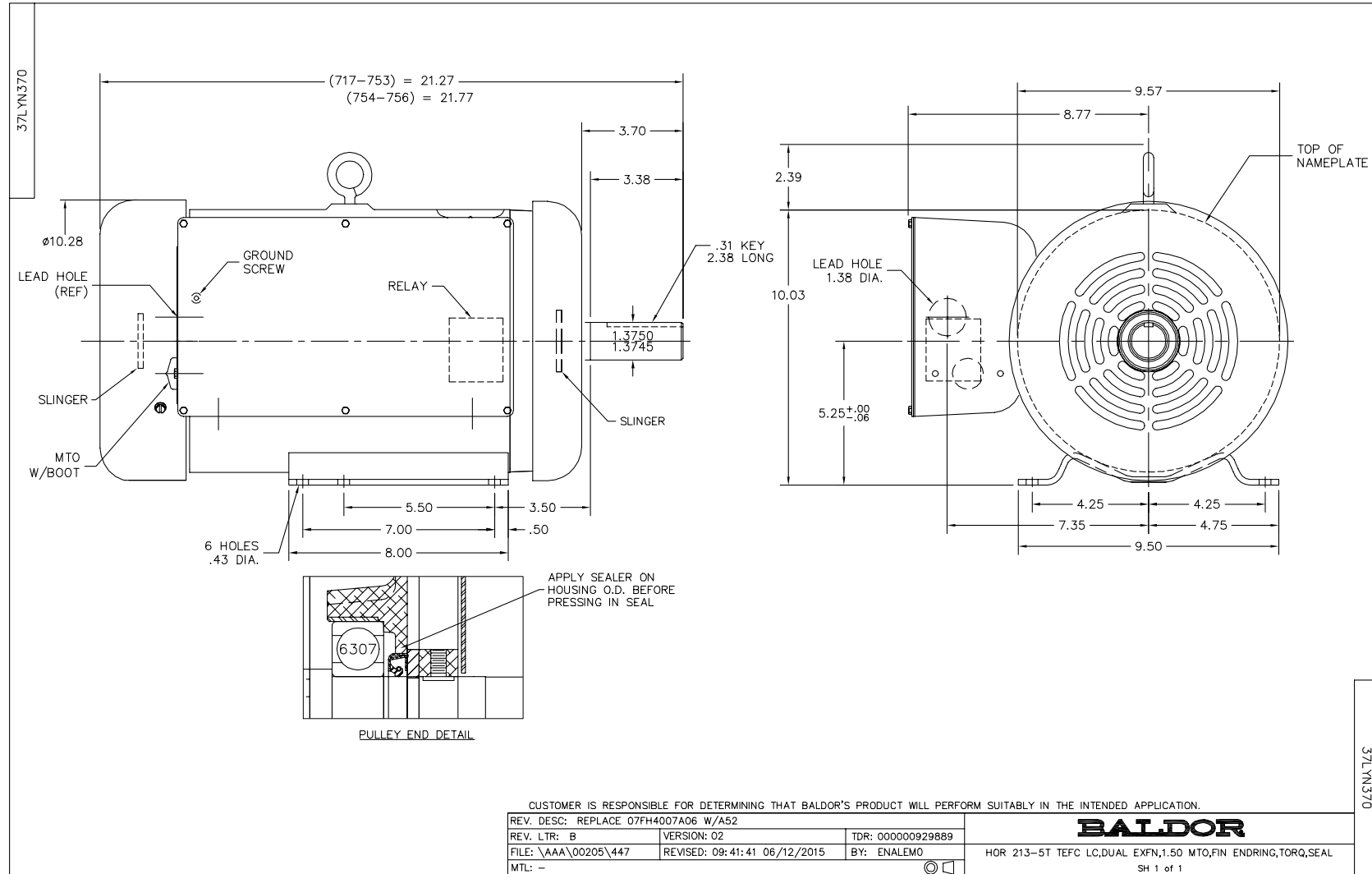
Load Characteristics 230 V, 60 Hz, 10 HP

% of Rated Load	25	50	75	100	125	150
Power Factor	79	91	94	96	96	96
Efficiency	73.9	84.5	86.8	86.4	84.1	81
Speed	1784	1768	1751	1732	1707	1679
Line amperes	13.6	21	29.5	39	50	62.5



Performance Graph at 230V, 60Hz, 10.0HP Typical performance - Not guaranteed values





CUSTOMER IS RESPONSIBLE FOR DETERMINING THAT BALDOR'S PRODUCT WILL PERFORM SUITABLY IN THE INTENDED APPLICATION.

REV. DESC: REPLACE 07FH4007A06 W/A52	VERSION: 02	TDR: 000000929889
REV. LTR: B		
FILE: \AAA\00205\447	REVISED: 09:41:41 06/12/2015	BY: ENALEMO
MTL: -		

**BALDOR**

HOR 213-5T TEFC LC,DUAL EXFN,1.50 MTO,FIN ENDRING,TORQ,SEAL

SH 1 of 1

