

Brass Female to Male Hex Nipples

Feature:

- other configurations are also available, consult Dixon for information

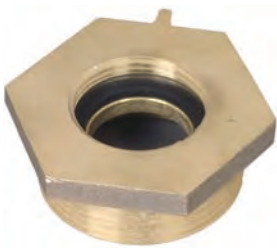
Female Thread	Male Thread	Cast Brass Part #	Price	Wt. Lbs.
¾" GHT	1" NPT	FM7610T	\$53.35	0.3
1" NPSH	¾" GHT	FM10S76	23.40	0.2
1" NPT	¾" GHT	FM1076	20.55	0.4
1" NPT	1" NPSH	FM1010	36.60	0.5
1" NPT	1" NST (NH)	FM1010F	33.50	0.5
1" NST (NH)	1" NPT	FM10F10T	33.50	0.5
1" NPT	1½" NPSH	FM1015	65.00	0.6
1" NPT	1½" NST (NH)	FM1015F	41.75	0.6
1" NPSH	1½" NPT	FM10S15T	65.00	0.5
1½" NPT	1½" NPSH	FM1515	21.25	0.6
1½" NPT	1½" NST (NH)	FM1515F	20.60	0.7
1½" NST (NH)	1½" NPSH	FM15F15S	26.05	0.7
1½" NST (NH)	1½" NPT	FM15F15T	18.40	0.5
1½" NST (NH)	1½" NPT	FM15S15F	22.85	0.5
1½" NST (NH)	1½" NST (NH)	FM15F15F	26.05	0.5
1½" NPSH	1½" NPT	FM15S15T	22.85	0.5
1½" NPSH	2" NPT	FM15S20T	33.75	0.6
1½" NST (NH)	2" NPT	FM15F20T	37.50	0.7
1½" NPT	2½" NST (NH)	FM1525F	67.75	1.9
1½" NST (NH)	2½" NPT	FM15F25T	64.15	1.9
1½" NST (NH)	2½" NST (NH)	FM15F25F	64.15	1.8
1½" NPSH	2½" CT	FM15S25 ¹	POR	1.9
1½" NPT	2½" CT	FM15T25 ¹	POR	1.9
1½" NST (NH)	2½" CT	FM15F25 ¹	POR	1.9
1½" NST (NH)	3" NST (NH)	FM15F30F	122.60	2.9
1½" NPT	3" NST (NH)	FM1530F	80.00	2.9
2" NPSH	1½" NPSH	FM20S15	64.40	1.0
2" NPT	1½" NPSH	FM2015	89.25	0.6
2" NPSH	1½" NST	FM20S15F	64.40	1.1
2" NPT	1½" NST (NH)	FM2015F	28.15	0.6
2" NPSH	1½" NPT	FM20S15T	30.60	0.6
2" NPSH	2" NPT	FM20S20T	140.00	1.0
2" NPT	2" NPSH	FM2020	140.00	1.2
2" NPSH	2½" NPT	FM20S25T	55.70	1.5
2" NPSH	2½" CT	FM20S25 ¹	POR	1.5
2" NPSH	2½" NST (NH)	FM20S25F	91.10	1.8
2" NPT	2½" CT	FM20T25 ¹	POR	1.5
2" NPT	2½" NST (NH)	FM2025F	81.40	1.5
2½" CT	¾" NPSH	FM25 ¹ _76	POR	1.3
2½" CT	¾" NPT	FM25 ¹ _75T	POR	1.3
2½" NST (NH)	¾" NPT	FM25F75T	144.55	1.8
2½" CT	1" NPT	FM25 ¹ _10T	POR	1.4
2½" NST (NH)	1" NPT	FM25F10T	138.05	1.6
2½" NPT	1½" NST (NH)	FM2515F	139.00	1.9
2½" NST (NH)	1½" NST (NH)	FM25F15F	80.05	1.7
2½" NST (NH)	1½" NPT	FM25F15T	80.05	1.7
2½" CT	1½" NPSH	FM25 ¹ _15S	POR	1.9
2½" CT	1½" NPT	FM25 ¹ _15T	POR	1.9
2½" NST (NH)	2" NPT	FM25F20T	52.05	1.7
2½" CT	2" NPT	FM25 ¹ _20T	POR	1.9
2½" NPT	2½" NPSH	FM2525	63.15	1.4
2½" NPT	2½" NST (NH)	FM2525F	52.65	1.6



reducer



same size



increaser

P

• table continued on next page

¹ Customer Thread (must specify) refer to legend on page 566

• All adapters are made to approved Dixon specifications.