

Brass Female to Male Hex Nipples

Table continued from previous page

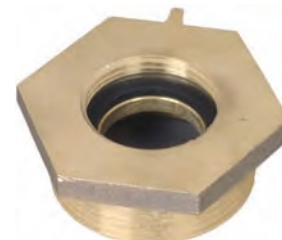
Female Thread	Male Thread	Cast Brass Part #	Price	Wt. Lbs.
2½" NST (NH)	2½" NST (NH)	FM25F25F	\$62.15	1.9
2½" NST (NH)	2½" NPT	FM25F25T	53.80	1.7
2½" NPT	2½" NPT	FM2525T	100.00	1.4
2½" NST (NH)	2½" NPSH	FM25F25S	144.55	1.4
2½" NPSH	2½" CT	FM25S25 ¹	POR	1.4
2½" NPT	2½" CT	FM25T25 ¹	POR	1.4
2½" CT	2½" NPSH	FM25 25S ¹	POR	1.4
2½" CT	2½" NPT	FM25 25T ¹	POR	1.4
2½" NPSH	2½" NST (NH)	FM25S25F	62.15	1.4
2½" NPSH	2½" NPT	FM25S25T	62.15	1.6
2½" CT	3" NPT	FM25 30T ¹	POR	1.9
2½" NST (NH)	3" NST (NH)	FM25F30F	89.80	1.6
2½" NST (NH)	3" NPT	FM25F30T	89.80	1.7
3" NPT	2½" NST (NH)	FM3025F	86.05	2.3
3" NST (NH)	2½" NST (NH)	FM30F25F	98.85	1.6
3" NST (NH)	2½" NPT	FM30F25T	98.85	2.2
3" NPT	2½" NPT	FM3025T	98.85	2.1
3" NPSH	2½"	FM30S25F	201.20	1.9
3" NPSH	2½" CT	FM30S25 ¹	POR	2.3
3" NPT	2½" CT	FM30T25 ¹	POR	2.3
3" NPT	2½" CT	FM30F25 ¹	POR	2.3
3" NST (NH)	3" NPT	FM30F30T	144.65	3.4
3" NPT	3" NST (NH)	FM3030F	144.65	2.5
4" NPT	2½" NST (NH)	FM4025F	387.30	6.6
4" NPT	2½" CT	FM40T25 ¹	POR	6.7
4" NPSH	2½" CT	FM40S25 ¹	POR	6.7
4" NPT	2½" CT	FM40F25 ¹	POR	6.7
4" NPT	4" NST (NH)	FM4040F	366.40	6.9
4" NST (NH)	4" NPT	FM40F40T	287.40	6.5
4" NPT	4½" NST (NH)	FM4045F	273.55	7.6
4½" NST (NH)	4" NPT	FM45F40T	454.25	6.1
6" NPT	6" NST (NH)	FM6060F	618.00	10.6
6" NST (NH)	6" NPT	FM60F60T	618.00	10.6



reducer



same size



increaser

¹ Customer Thread (*must specify*) refer to legend on page 566

- All adapters are made to approved Dixon specifications.