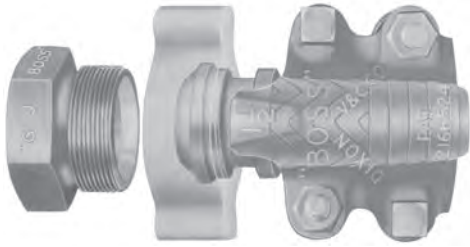


GJ Boss™ Ground Joint Seal

E



Features:

- positive metal-to-polymer seal
- leakproof seal forms when the metal head of the stem makes contact with the patented polymer seat in the spud
- non-metallic polymer seat resists most chemicals found in manufacturing facilities (reference corrosion resistance chart on pages 802-807)
- recommended for steam service up to **450°F**
- easy to seal
- works with existing fittings
- *plated steel and / or iron*
- use with Boss clamps found on pages 111 and 112.



complete female



stem



wing nut



knurled nut

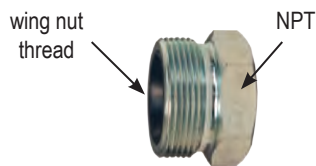
Hose Shank x NPT	Part #	Price/E	Part #	Price/E	Opt Qty	Part #	Price/E	Opt Qty	Part #	Price/E	Opt Qty
1/4"	GF1 ¹	\$49.30	GBA	\$18.75	100	SLS4	\$12.10	100	---	---	--
3/8"	GF3 ¹	42.45	GCA	8.90	100	CB	11.80	100	---	---	--
1/2"	GF6	33.25	GB1	7.40	100	B2	7.60	100	---	---	--
1/2" x 3/4"	GF26-1	43.10	GB6-1	17.20	50	B12	10.00	25	---	---	--
3/4"	GF26	40.40	GB6	14.50	50	B12	10.00	25	KB12	\$15.45	25
1"	GF36	41.70	GB11	15.20	50	B12	10.00	25	KB12	15.45	25
1 1/4"	GF51	77.25	GB16	23.60	25	B17	18.45	25	---	---	--
1 1/2"	GF61	73.85	GB21	21.80	25	B17	18.45	25	---	---	--
2"	GF81 ²	88.60	GB26 ²	24.30	10	B27	29.45	10	---	---	--
2 1/2"	GF96	215.50	GB31	56.85	5	B32	68.80	5	---	---	--
3"	GF111	225.20	GB36 ³	80.00	5	B37	59.30	5	---	---	--
4"	GF141	500.00	GB46	160.60	5	B47	168.00	5	---	---	--
6"	GF201 ¹	1183.25	GB66	365.00	2	B67	248.25	2	---	---	--



¹ 1/4", 3/8" and 6" available only with copper seat spuds

² not to be used with #250, #275 or #306 Boss clamps

³ GB36 will be replaced with GB36CR, this replacement part will have a machined hose shank to accommodate a Boss clamp, King Crimp sleeve or ferrule



female spud



male spud



double spud

Thread	Part #	Price/E	Opt Qty	Part #	Price/E	Part #	Price/E
1/4"	GBC ¹	\$18.65	100	---	---	---	---
3/8"	GCC ¹	21.95	100	GMC ¹	\$20.00	---	---
1/2"	GB3	18.25	100	GM3	22.90	GDB3	\$35.15
3/4"	GB8	15.90	50	GM8	21.70	GDB13	35.40
1"	GB13	16.50	50	GM13	22.90	GDB13	35.40
1 1/4"	GB18	36.20	25	GM18	51.85	GDB23	61.50
1 1/2"	GB23	33.60	25	GM23	50.00	GDB23	61.50
2"	GB28	34.85	10	GM28	54.00	GDB28	66.25
2 1/2"	GB33	89.85	5	GM33	128.10	GDB33	131.35
3"	GB38	97.10	5	GM38	134.70	GDB38	137.70
4"	GB48	171.40	5	---	---	---	---
6"	GB68 ¹	570.00	2	---	---	---	---

¹ 1/4", 3/8" and 6" available only with copper seat spuds



A list of products recommended for steam service can be found on page 103.