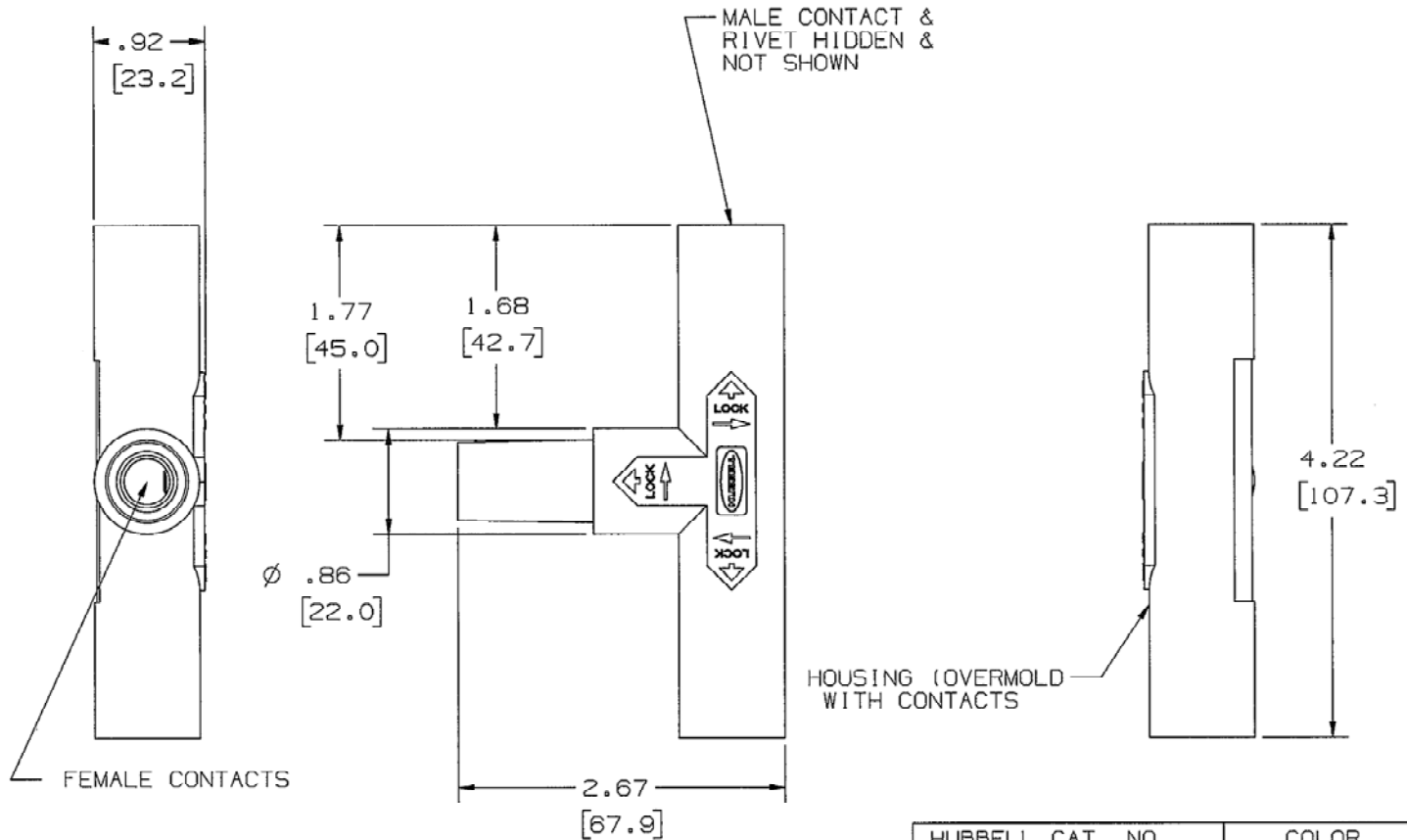


M-9737 3



MALE CONTACT &
RIVET HIDDEN &
NOT SHOWN

HOUSING (OVERMOLD
WITH CONTACTS

- NOTES:
1. DIMENSIONS ARE INCHES $\pm .02$
[mm] $\pm .5$
 2. RATING: 600VAC/250VDC 150 AMP
 3. UL/c-UL ENCLOSURE TYPES 3R, 4X, 12.

HUBBELL CAT. NO.	COLOR
HBL15PTBK	BLACK
HBL15PTW	WHITE
HBL15PTGN	GREEN
HBL15PTR	RED
HBL15PTBL	BLUE

LIST OF PARTS		
DESCRIPTION	MATERIAL	FINISH
HOUSING	TPE	SEE TABLE
FEMALE CONTACT	BRASS	
RIVET	BRASS	
MALE CONTACT	BRASS	

SYM	REVISIONS	APP	DATE
3	CHANGED CATALOG NO.'S FROM HBLPTXX15 TO HBL15PTXX. ADD DIM 4.22 PER DCN 19979 CAC	<i>Cal</i>	7/24/13
2	UPDATED REMOVE OR, BR, Y PER DCN 19081 CAC		8/29/12
1	RELEASED FOR PRODUCTION PER DCN 12733 PJT		1/10/08

THE DESIGN AND DIMENSIONS OF THE PRODUCT SHOWN ON THIS DRAWING ARE SUBJECT TO CHANGE WITHOUT NOTICE

TITLE
150A SINGLE POLE
PARALLING T
FEMALE/MALE/MALE

TOLERANCES UNLESS OTHERWISE SPECIFIED	WIRING DEVICE-KELLEMS HUBBELL INCORPORATED BRIDGEPORT, CT	
FRACTIONS $\pm 1/64$	DR. BY PJT	APP. BY
DECIMALS $\pm .005$	TR. BY	SCALE 1:1
ANGLES $\pm 2^\circ$	CHK'D BY	DATE 1/10/08

DIMENSION SHEET FOR CAT. NO. M-9737
 REPAIRABLE NON-REPAIRABLE