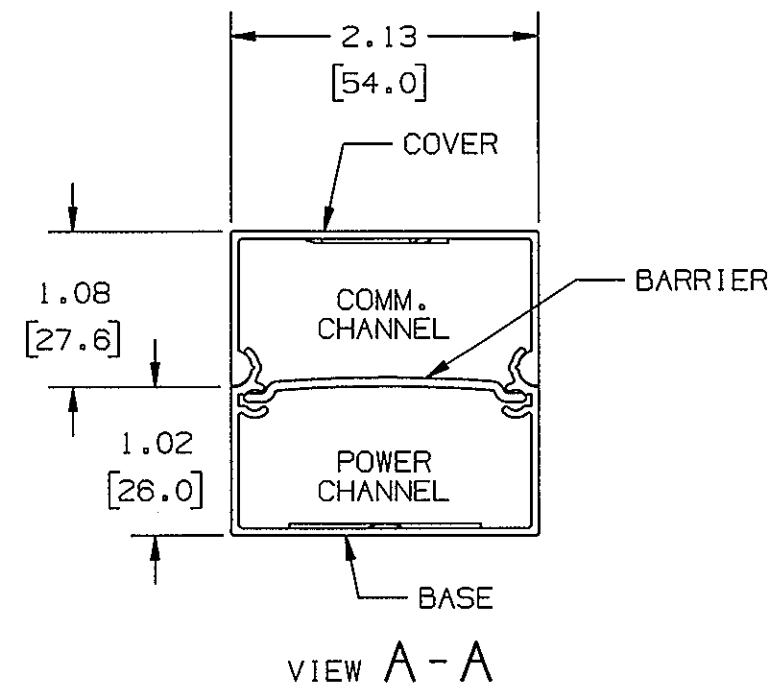
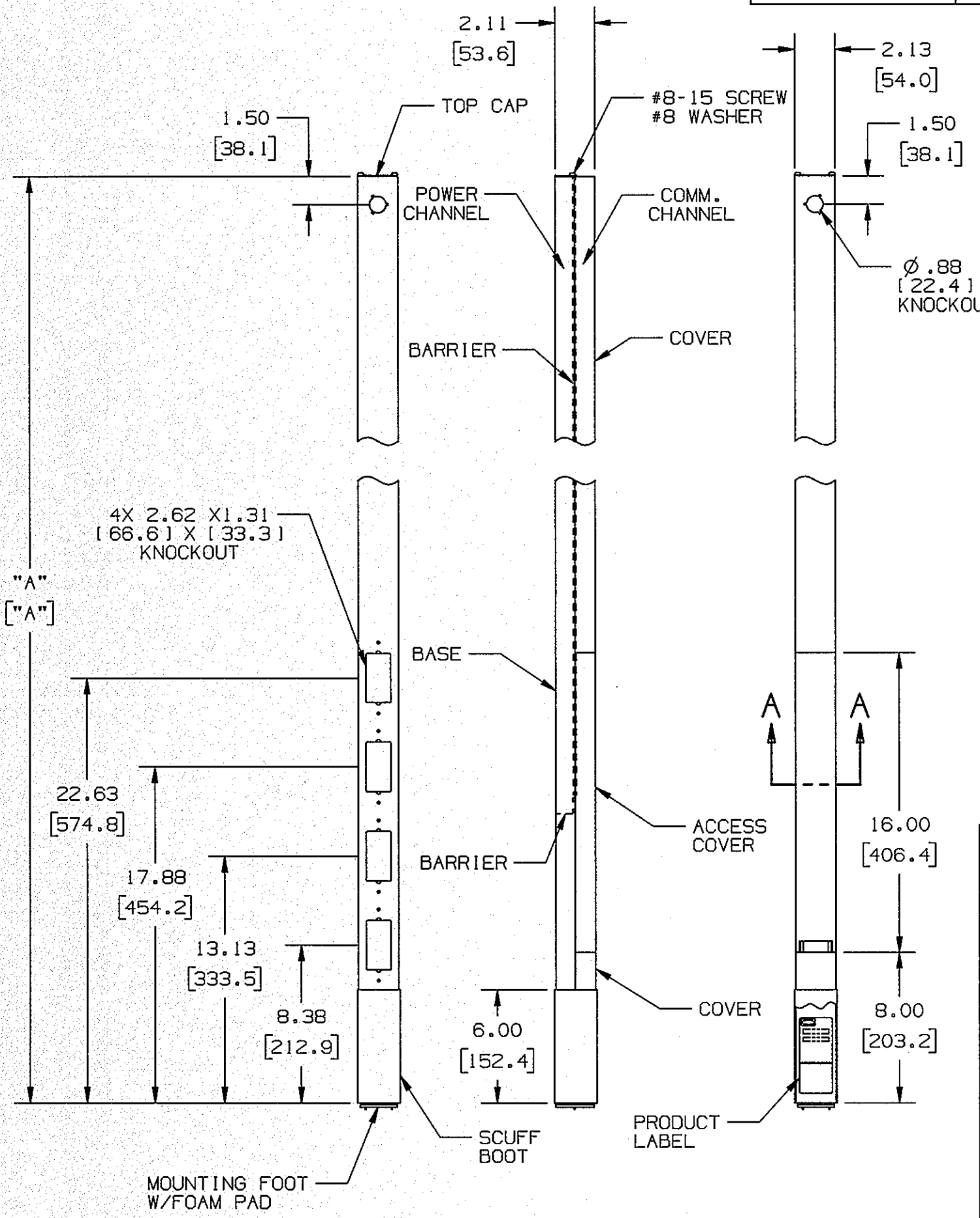


M-7831 6



NOTES:
1. DIMS. ARE IN INCHES. [mm]
2. COMES WITH TRIM KIT.

CATALOG NO.	COLOR	DIM. "A"
HBLPPOA	GRAY	122.00 [3098.8]
HBLPPOAI	IVORY	
HBLPPOAAL	SATIN FINISH ALUM	
HBLPPOBK	BLACK	
HBLPPOW	WHITE	146.00 [3708.4]
HBLPPOOW	OFFICE WHITE	
HBLPPO12A	GRAY	
HBLPPO12AI	IVORY	
HBLPPO12AAL	SATIN FINISH ALUM	182.00 [4622.8]
HBLPPO12BK	BLACK	
HBLPPO12W	WHITE	
HBLPPO12OW	OFFICE WHITE	
HBLPPO15A	GRAY	
HBLPPO15AI	IVORY	
HBLPPO15AAL	SATIN FINISH ALUM	182.00 [4622.8]
HBLPPO15BK	BLACK	
HBLPPO15W	WHITE	
HBLPPO15OW	OFFICE WHITE	

LIST OF PARTS		
DESCRIPTION	MATERIAL	FINISH

6	ADDED CAT NOS.; HBLPPOBK, HBLPPOW, HBLPPOOW, HBLPPO12BK, HBLPPO12W, HBLPPO12OW, HBLPPO15BK, HBLPPO15W, HBLPPO15OW AND SPECS. TO TABLE. PER DCN 21632	DDL	09/01/15
5	IN TABLE, REACTIVATED HBLPPOAAL PER DCN 13794 RCM	CZH	4/12/07
4	IN TABLE, CROSSHATCHED HBLPPOAAL TO INDICATE CAT. IS OBSOLETE. HBLPPO12AAL AND HBLPPO115AAL SATIN FINISH ALUM WAS ANODIZED ALUM. IN TITLE, ADDED STANDARD PER DCN 13579 SPN	CZH	1/8/07
3	"A" WAS 122.00; ADDED HBLPPOAAL, HBLPPO12A, HBLPPO12AI, HBLPPO12AAL, HBLPPO15A, HBLPPO15AI, HBLPPO15AAL; ADDED NOTES 1&2 PER DCN 13044 RCM	CZH	4/7/06
SYM	REVISIONS	APP	DATE

THE DESIGN AND DIMENSIONS OF THE PRODUCT SHOWN ON THIS DRAWING ARE SUBJECT TO CHANGE WITHOUT NOTICE

TITLE
STANDARD SERVICE POLES

TOLERANCES UNLESS OTHERWISE SPECIFIED .XX = ±.01 .XXX = ±.005 ANGLES = ±2°	WIRING DEVICE-KELLEMS HUBBELL INCORPORATED SHELTON, CT	
	DR. BY RCM	APP. BY CZH
	TR. BY	SCALE NONE
	CHK. BY CZH	DATE 11/19/97

DIMENSION SHEET FOR CAT. NO. **M-7831**
REPAIRABLE NON-REPAIRABLE