

BALDOR® • RELIANCE 

Product Information Packet

IDVSNM3546

1HP,RPM,0PH,HZ,56C,TENV,F1

Part Detail							
Revision:	G	Status:	PRD/A	Change #:		Proprietary:	No
Type:	AC	Elec. Spec:	35WGM302	CD Diagram:	CD0005	Mfg Plant:	
Mech. Spec:	35T995	Layout:	35LYT995	Poles:	04	Created Date:	08-24-2012
Base:	RG	Eff. Date:	05-16-2018	Leads:	9#18		

Specs			
Catalog Number:	IDVSNM3546	Inverter Code:	Inverter Duty
Enclosure:	TENV	KVA Code:	N
Frame:	56C	Lifting Lugs:	No Lifting Lugs
Frame Material:	Steel	Locked Bearing Indicator:	Locked Bearing
Output @ Frequency:	1.000 HP @ 60 HZ	Motor Lead Quantity/Wire Size:	9 @ 18 AWG
Synchronous Speed @ Frequency:	1800 RPM @ 60 HZ	Motor Lead Exit:	Ko Box
Voltage @ Frequency:	230.0 V @ 60 HZ	Motor Lead Termination:	Flying Leads
	460.0 V @ 60 HZ	Motor Type:	3524M
XP Class and Group:	None	Mounting Arrangement:	F1
XP Division:	Not Applicable	Power Factor:	72
Agency Approvals:	UR	Product Family:	General Purpose
	CSA	Pulley End Bearing Type:	Ball
Auxillary Box:	No Auxillary Box	Pulley Face Code:	C-Face
Auxillary Box Lead Termination:	None	Pulley Shaft Indicator:	Standard
Base Indicator:	Rigid	Rodent Screen:	None
Bearing Grease Type:	Polyrex EM (-20F +300F)	RoHS Status:	ROHS COMPLIANT
Blower:	None	Shaft Extension Location:	Pulley End
Current @ Voltage:	1.500 A @ 460.0 V	Shaft Ground Indicator:	No Shaft Grounding

	3.000 A @ 230.0 V	Shaft Rotation:	Reversible
Design Code:	B	Shaft Slinger Indicator:	No Slinger
Drip Cover:	No Drip Cover	Speed Code:	Single Speed
Duty Rating:	CONT	Motor Standards:	NEMA
Electrically Isolated Bearing:	Not Electrically Isolated	Starting Method:	Direct on line
Feedback Device:	NO FEEDBACK	Thermal Device - Bearing:	None
Front Face Code:	Encoder/Feedback Device	Thermal Device - Winding:	Normally Closed Thermostat
Front Shaft Indicator:	None	Vibration Sensor Indicator:	No Vibration Sensor
Heater Indicator:	No Heater	Winding Thermal 1:	None
Insulation Class:	F	Winding Thermal 2:	None

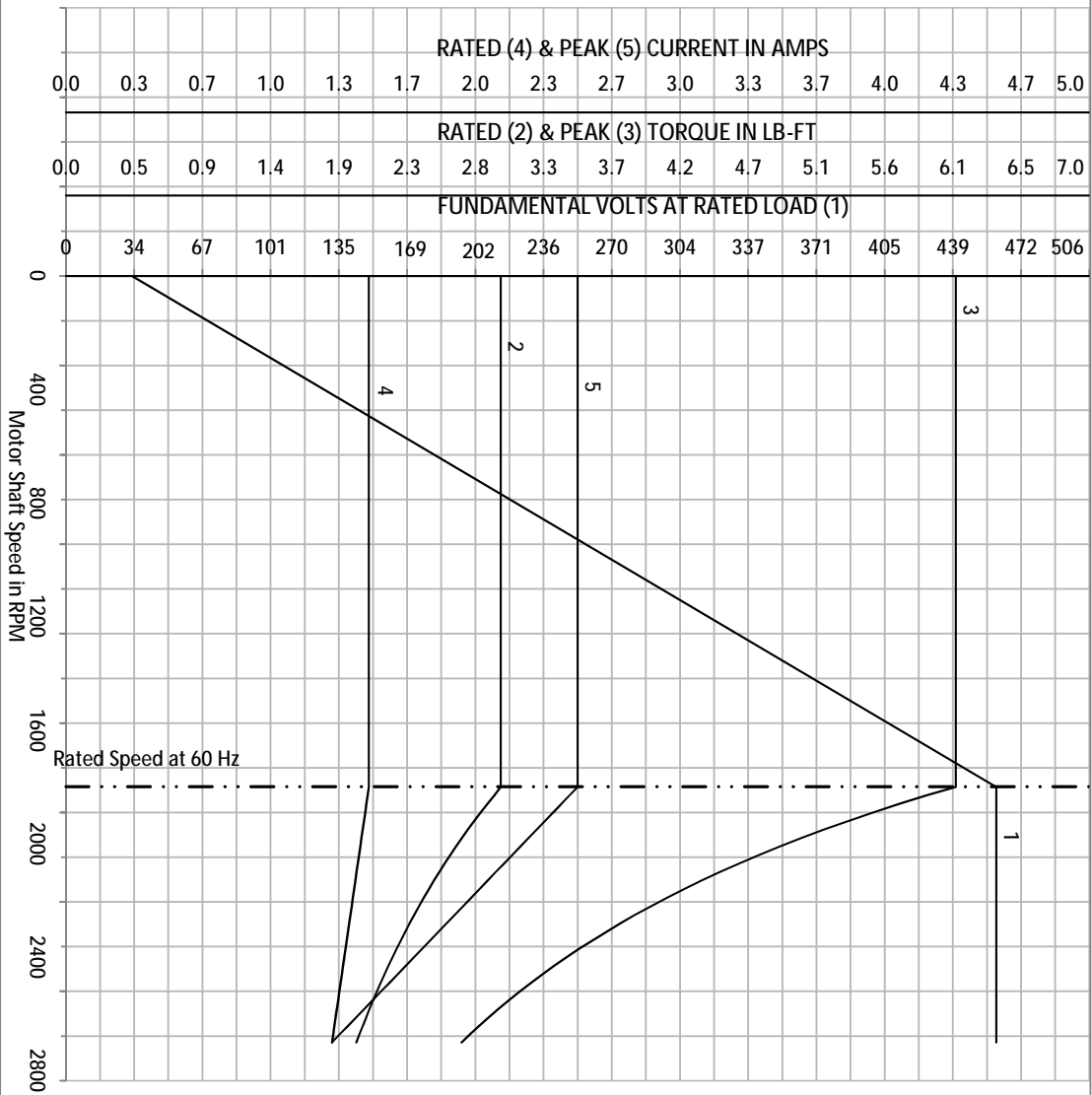
Nameplate NP3301L	
CAT NO	IDVSNM3546
SPEC.	35T995M302G1
FRAME	56C HP 1 TE
VOLTS	230/460
MAG CUR	2/1 FLA 3/1.5
RPM	1760 RPM MAX 6000
HZ	60 PH 3 CLASS F
SER.F.	1.00 SL HZ 1.3
NEMA-NOM-EFF	87.5 WK2 0.14
RATING	40C AMB-CONT
DE BRG	6205 ODE BRG 6203
CC	010A SN

Parts List		
Part Number	Description	Quantity
SA250101	SA 35T995M302G1	1.000 EA
RA236961	RA 35T995M302G1	1.000 EA
NS2512A01	INSULATOR, CONDUIT BOX X	1.000 EA
35CB3007	35 CB CASTING W/.88 DIA. LEAD HOLE	1.000 EA
36GS1000SP	GASKET-CONDUIT BOX, .06 THICK #SV-330 LE	1.000 EA
51XB1016A07	10-16 X 7/16 HXWSSLD SERTYB	2.000 EA
11XW1032G06	10-32 X .38, TAPTITE II, HEX WSHR SLTD U	1.000 EA
35EP3122K01	K00 W/SH ENC CVR	1.000 EA
HW5100A03	WAVY WASHER (W1543-017)	1.000 EA
35EP3307F00	MASTER DE,205 BRG,.998SH,#26 DRN	1.000 EA
51XN1032A20	10-32 X 1 1/4 HX WS SL SR	2.000 EA
35FH4801G	THRU-SHAFT ENCODER COVER INV/VECTOR F1 &	1.000 EA
WD4129	1.50 X 1.50 GRAY SNAP IN PLUG PROMOULD #	2.000 EA
10XN2520A08	1/4-20X1/2 HEX HEAD CAP	4.000 EA
10XN2520A08	1/4-20X1/2 HEX HEAD CAP	1.000 EA
35CB4521GX	CONDUIT BOX LID KIT **ORDER INDIV PARTS	1.000 EA
51XW0832A07	8-32 X .44, TAPTITE II, HEX WSHR SLTD SE	4.000 EA
HW2501D13	KEY, 3/16 SQ X 1.375	1.000 EA
HA7000A04	KEY RETAINER 0.625 DIA SHAFTS	1.000 EA
MJ5004A05	#242-21 LOCTITE GENERAL PURPOSE MED. STR	0.005 EA
85XU0407S04	4X1/4 U DRIVE PIN STAINLESS	2.000 EA
MJ1000A02	GREASE, POLYREX EM EXXON (USe 4824-15A)	0.050 LB
MG1025N19	MUNSELL 8.5BG 3.57/2.0, GLOSS 30, B/G,	0.017 GA
HA3100A15	THRUBOLT 10-32 X 8.375	4.000 EA

Parts List (continued)		
Part Number	Description	Quantity
LB1119N	WARNING LABEL	1.000 EA
LC0145B01	CONNECTION LABEL	1.000 EA
NP3301L	SS INV UL CSA CC (W/OUT DESIGN FIELD)	1.000 EA
36PA1000	PKG GRP, PRINT PK1016A06	1.000 EA
MN416A01	TAG-INSTAL-MAINT no wire (1200/bx) 5/18	1.000 EA
PE-0000001	ZRTG PE ASSEMBLY	1.000 EA
FE-0000001	ZRTG FE ASSEMBLY	1.000 EA

Catalog	IDVSNM3546	VOLTS	230/460	ENCLOSURE	TEFC	WYE CONN E.O. CKT OHMS PER PHASE (AT BASE RATING, 25°C)
FRAME	56C	AMPS	3/1.5	MAX SAFE RPM	2700	
HP	1	DUTY	Cont	In (AMPS)	0.951	R1 5.9830 X1 11.2970
BASE SPEED	1760	S.F.	1.15	P.F. @NL/FL	0/72	R2 3.8520 X2 9.5260
PHASE/HZ	3/60	AMB °C/INSI	40/F	WK ² (lb-ft ²)	0.148	XM 263.5580

Vector PWM Inverter Duty
Variable Speed AC Motor Curves



Calculated Data

Data Valid For Nameplate Speed Range only

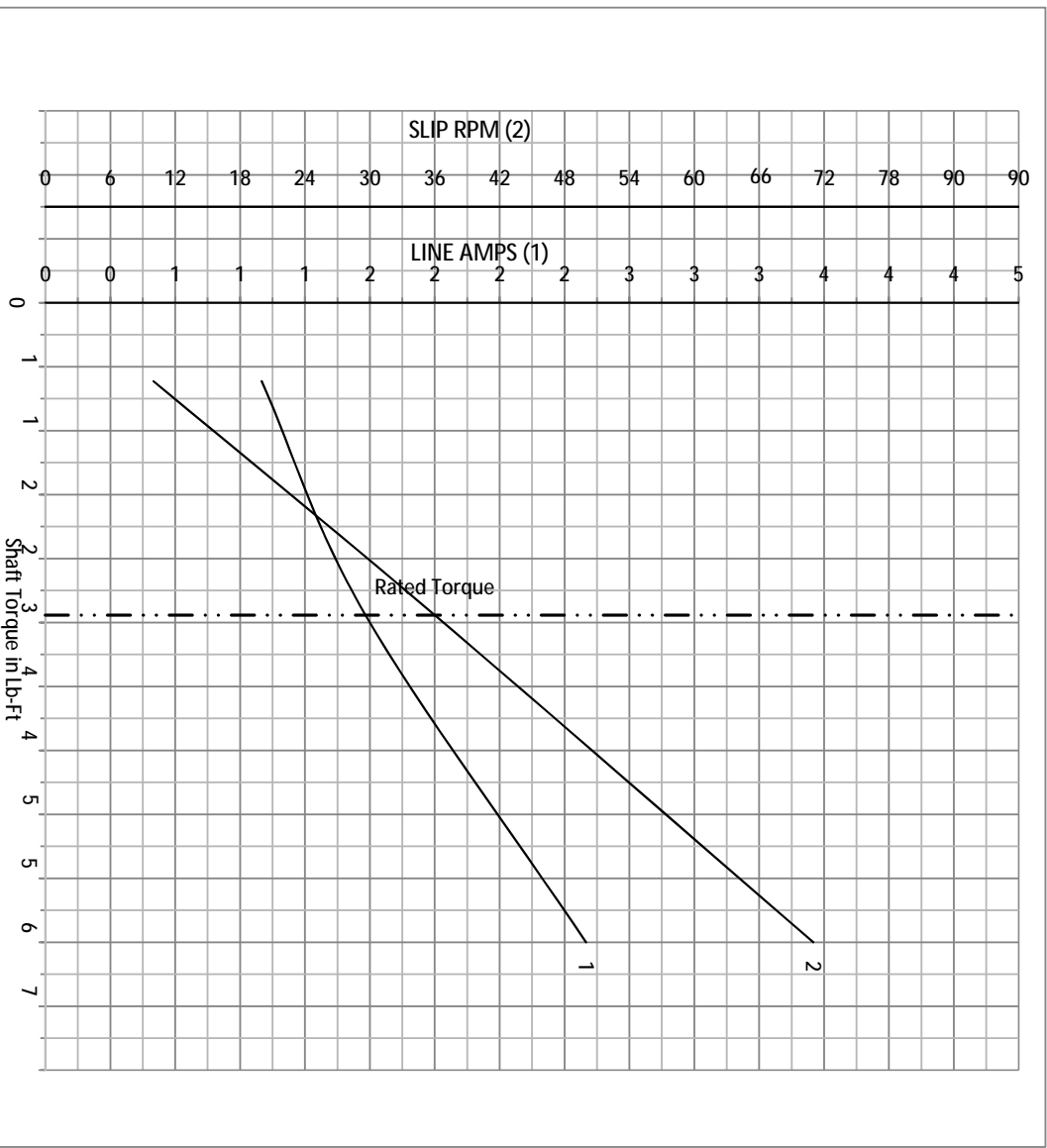


DR BY JJ
 CK BY JJ
 APP BY JJ
 DATE 3/6/2015

A-C MOTOR PERFORMANCE CURVES
 35T995M302G1
 ISSUE DATE: 3/6/2015

Catalog	IDVSNM3546	NP VOLTS	230/460	ENCLOSURE	TEFC	WYE CONN EO OKT OHMS PER PHASE (AT BASE RATING, 25°C)
FRAME	56C	NP AMPS	3/1.5	MAX SAFE RPM	2700	R1 5.983 X1 11.297
HP	1	DUTY	Cont	NL AMPS	0.951	R2 3.852 X2 9.526
BASE SPEED	1760	S.F.	1.15	P.F. @NL/FL	0/72	
PHASE/HZ	3/60	AMB ³ /C/NS/UL	40/F	WK ² (lb-ft ²)	0.148	XM 263.558

Vector PWM Inverter Duty
Variable Speed AC Motor Curves

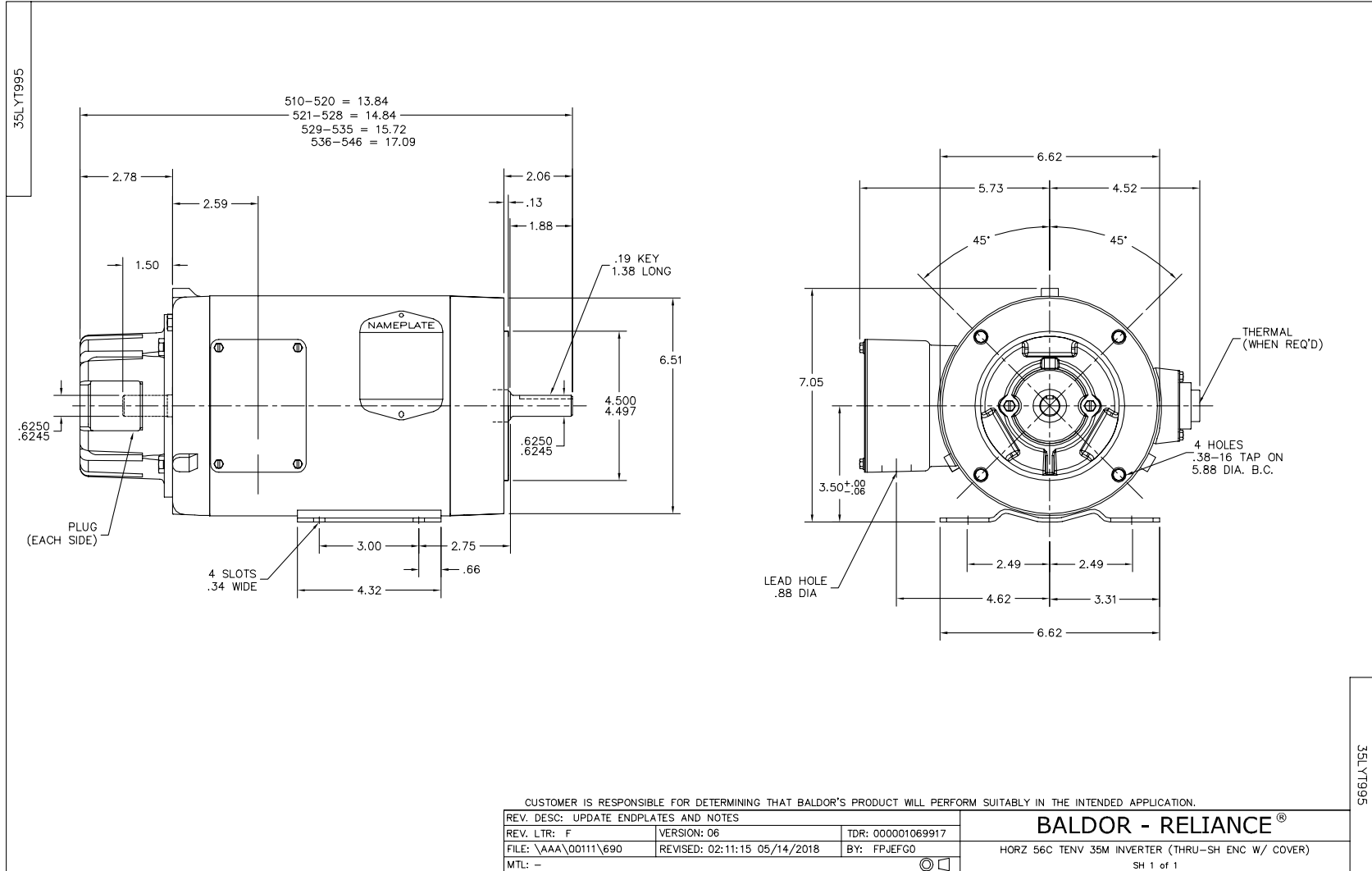


Calculated Data

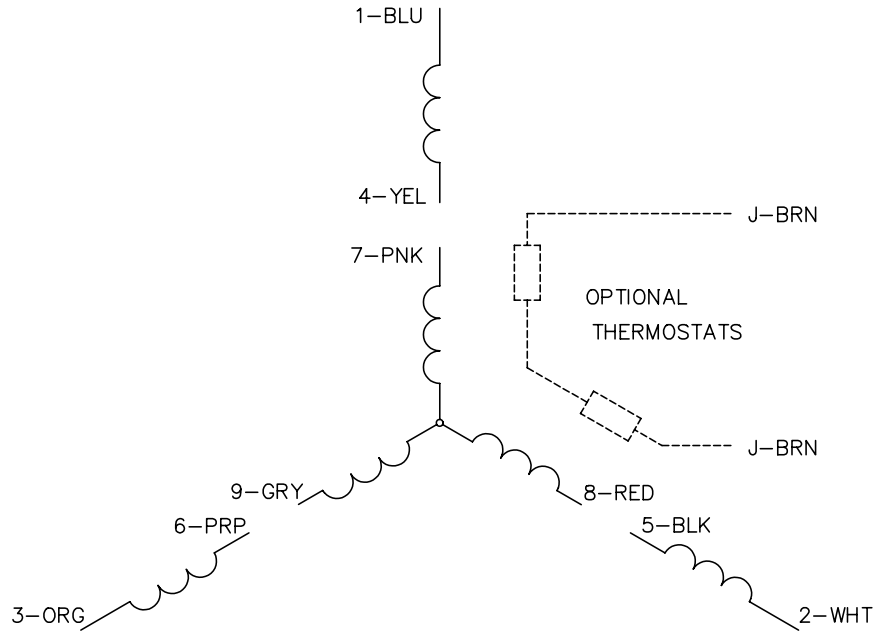
Data Valid For Nameplate Speed Range only

BALDOR
A MEMBER OF THE ABB GROUP

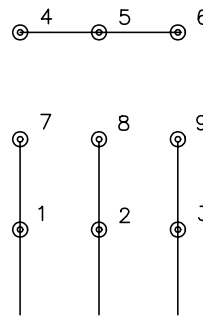
DR BY	JJ	A-C MOTOR	35T995M302G1
CK BY	JJ	PERFORMANCE	
APP BY	JJ	CURVES	
DATE	3/6/2015	ISSUE DATE	3/6/2015



CD0005

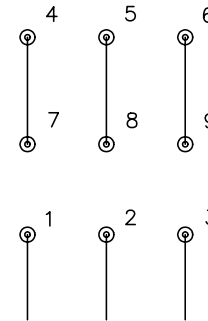


LOW VOLTAGE
(2Y)



LINE

HIGH VOLTAGE
(1Y)



LINE

NOTES:

1. INTERCHANGE ANY TWO LINE LEADS TO REVERSE ROTATION.
2. OPTIONAL THERMOSTATS ARE PROVIDED WHEN SPECIFIED.
3. ACTUAL NUMBER OF INTERNAL PARALLEL CIRCUITS MAY BE A MULTIPLE OF THOSE SHOWN ABOVE.
4. LEAD COLORS ARE OPTIONAL. LEADS MUST ALWAYS BE NUMBERED AS SHOWN.

REV. DESC: REVISE TO SHOW OPTIONAL COLORS			
REV. LTR: E	BY: JLP	REVISED: 01/19/99 10:15	TDR: 0171435
90000		FILE: AAA00005140	MDL: -
		MTL: -	

BALDOR ELECTRIC Co.

3PH, DV, 9 LEADS

CD0005