

**BALDOR® • RELIANCE** 

**Product Information Packet**

**IDXM7010**

**.75HP,1750RPM,3PH,60HZ,56C,3516M,XPFC,F1**

Part Detail							
Revision:	U	Status:	PRD/A	Change #:		Proprietary:	No
Type:	AC	Elec. Spec:	35WGP667	CD Diagram:	CD0005	Mfg Plant:	
Mech. Spec:	35M998	Layout:	35LYM998	Poles:	04	Created Date:	01-14-2008
Base:	RG	Eff. Date:	06-08-2018	Leads:	9#18		

Specs			
Catalog Number:	IDXM7010	Insulation Class:	F
Enclosure:	XPFC	Inverter Code:	Inverter Duty
Frame:	56C	KVA Code:	M
Frame Material:	Steel	Lifting Lugs:	No Lifting Lugs
Output @ Frequency:	.750 HP @ 60 HZ	Locked Bearing Indicator:	Locked Bearing
Synchronous Speed @ Frequency:	1800 RPM @ 60 HZ	Motor Lead Quantity/Wire Size:	9 @ 18 AWG
Voltage @ Frequency:	460.0 V @ 60 HZ	Motor Lead Exit:	Ko Box
	230.0 V @ 60 HZ	Motor Lead Termination:	Flying Leads
XP Class and Group:	CLI GP D; CLII GP F,G	Motor Type:	3516M
XP Division:	Division I	Mounting Arrangement:	F1
Agency Approvals:	CSA	Power Factor:	73
	UL	Product Family:	General Purpose
	UR	Pulley End Bearing Type:	Ball
Auxillary Box:	No Auxillary Box	Pulley Face Code:	C-Face
Auxillary Box Lead Termination:	None	Pulley Shaft Indicator:	Standard
Base Indicator:	Rigid	Rodent Screen:	None
Bearing Grease Type:	Polyrex EM (-20F +300F)	RoHS Status:	ROHS COMPLIANT
Blower:	None	Shaft Extension Location:	Pulley End

<b>Constant Torque Speed Range:</b>	6	<b>Shaft Ground Indicator:</b>	No Shaft Grounding
<b>Current @ Voltage:</b>	1.100 A @ 460.0 V	<b>Shaft Rotation:</b>	Reversible
	2.200 A @ 230.0 V	<b>Shaft Slinger Indicator:</b>	No Slinger
<b>Design Code:</b>	B	<b>Speed Code:</b>	Single Speed
<b>Drip Cover:</b>	No Drip Cover	<b>Motor Standards:</b>	NEMA
<b>Duty Rating:</b>	CONT	<b>Starting Method:</b>	Direct on line
<b>Electrically Isolated Bearing:</b>	Not Electrically Isolated	<b>Thermal Device - Bearing:</b>	None
<b>Feedback Device:</b>	NO FEEDBACK	<b>Thermal Device - Winding:</b>	Normally Closed Thermostat
<b>Front Face Code:</b>	Standard	<b>Vibration Sensor Indicator:</b>	No Vibration Sensor
<b>Front Shaft Indicator:</b>	None	<b>Winding Thermal 1:</b>	None
<b>Heater Indicator:</b>	No Heater	<b>Winding Thermal 2:</b>	None
		<b>XP Temp Code:</b>	T3C

Nameplate NP0887XPSL									
NO.					CC				
S/N					TEMP CODE	T3C			
SPEC.	35M998P667G1				INV.TYPE	PWM			
CAT.NO.	IDXM7010				C HP FR	60	C HP TO	90	
HP	.75				CT HZ FROM	6	CT HZ TO	60	
VOLTS	230/460				VT HZ FROM	6	VT HZ TO	60	
AMPS	2.2/1.1				MAG CUR	1.5/.75			
RPM	1750				MX RPM	2700			
HZ	60	PH	3	CL	F	NOM.EFF.	84		
SER.F.	1.00	DES	B	SL HZ	2	WK2	0.946		
FRAME	56C	RATING	40C AMB-CONT						

Parts List		
Part Number	Description	Quantity
SA167076	SA 35M998P667G1	1.000 EA
RA155425	RA 35M998P667G1	1.000 EA
34FN3002B01	EXTERNAL FAN, PLASTIC, .637/.639 HUB W/	1.000 EA
35CB3001A01SP	EXPL CONDUIT BOX, MACH, 1/2" PIPE TAP LE	1.000 EA
11XW0832G06	#8-32 X 3/8, TAPTITE II, HEX WSHR SLTD	1.000 EA
HW3001B01	BRASS CUP WASHER, FOR #10 SCREW	1.000 EA
35EP3700A01SP	FR ENDPLATE, XPFC	1.000 EA
HW5100A03	WAVY WASHER (W1543-017)	1.000 EA
35EP3702A01SP	PU EP-205 BRG-35X-56C-143-5TC	1.000 EA
51XN1032A20	10-32 X 1 1/4 HX WS SL SR	2.000 EA
HA3013A01	1/2-20X5/8 SPL.HX BOLT	2.000 EA
HW3021C06	3/32 DI X .625 PIN (F/S)	2.000 EA
XY3118A12	5/16-18 HEX NUT DIRECTIONAL SERRATION	4.000 EA
51XB1214A16	12-14X1.00 HXWSSLD SERTYB	1.000 EA
35FH4005A01SP	IEC FH NO GREASER W/PRIMED	1.000 EA
51XW1032A06	10-32 X .38, TAPTITE II, HEX WSHR SLTD S	3.000 EA
35CB3500A01SP	CONDUIT BOX LID, MACH	1.000 EA
51XN2520A16	SCREW, HEX WS SLT, ZN, 1/4-20 X 1.00	4.000 EA
HW2501D13	KEY, 3/16 SQ X 1.375	1.000 EA
HA7000A04	KEY RETAINER 0.625 DIA SHAFTS	1.000 EA
HA7000A04	KEY RETAINER 0.625 DIA SHAFTS	1.000 EA
85XU0407S04	4X1/4 U DRIVE PIN STAINLESS	8.000 EA
NP0018F	ALUM UL XP CONDUIT BOX NAMEPLATE	1.000 EA
MJ1000A02	GREASE, POLYREX EM EXXON (USe 4824-15A)	0.050 LB

<b>Parts List (continued)</b>		
<b>Part Number</b>	<b>Description</b>	<b>Quantity</b>
MG1025G29	WILKOFEST, 789.229, DARK CHARCOAL GRAY	0.017 GA
HW2501D13	KEY, 3/16 SQ X 1.375	1.000 EA
HA3104A06	THRUBOLT 5/16-18 X 8.50 OHIO ROD	4.000 EA
LB1119N	WARNING LABEL	1.000 EA
LC0145B01	CONNECTION LABEL	1.000 EA
NP0887XPSL	SS XP INV UL CSA CC CL-I GP-D CL-II GP-F	1.000 EA
36PA1000	PKG GRP, PRINT PK1016A06	1.000 EA
MN416A01	TAG-INSTAL-MAINT no wire (1200/bx) 5/18	1.000 EA

AC Induction Motor Performance Data

Page 1 of 1



**AC Induction Motor Performance Data**

Record # 31850

Typical performance - not guaranteed values

<b>Winding:</b> 35WGP667	<b>Type:</b> 3517M	<b>Enclosure:</b> XPFC
--------------------------	--------------------	------------------------

Nameplate Data			General Characteristics at 460 V, 60 Hz: High Volt Connection		
Rated Output (HP)	.75		Full Load Torque	2.22 LB-FT	
Volts	230/460		Start Configuration	DOL	
Full Load Amps	2.2/1.1		Break Down Torque	10.5 LB-FT	
R.P.M.	1750		Pull-Up Torque	6.26 LB-FT	
Hz	60	Phase	Locked-rotor Torque	7.48 LB-FT	
NEMA Design Code	B	KVA Code	Starting Current	9.7 Amps	
Service Factor	1		No-load Current	0.752 Amps	
NEMA Nom. Eff.	84	P.F.	Line-line Res. @ 25°C.	23.3 Ohms	
Rating - Duty	40C AMB-CONT		Temp. Rise @ Rated Load	30°C	
S.F. Amps			Temp. Rise @ S.F. Load		

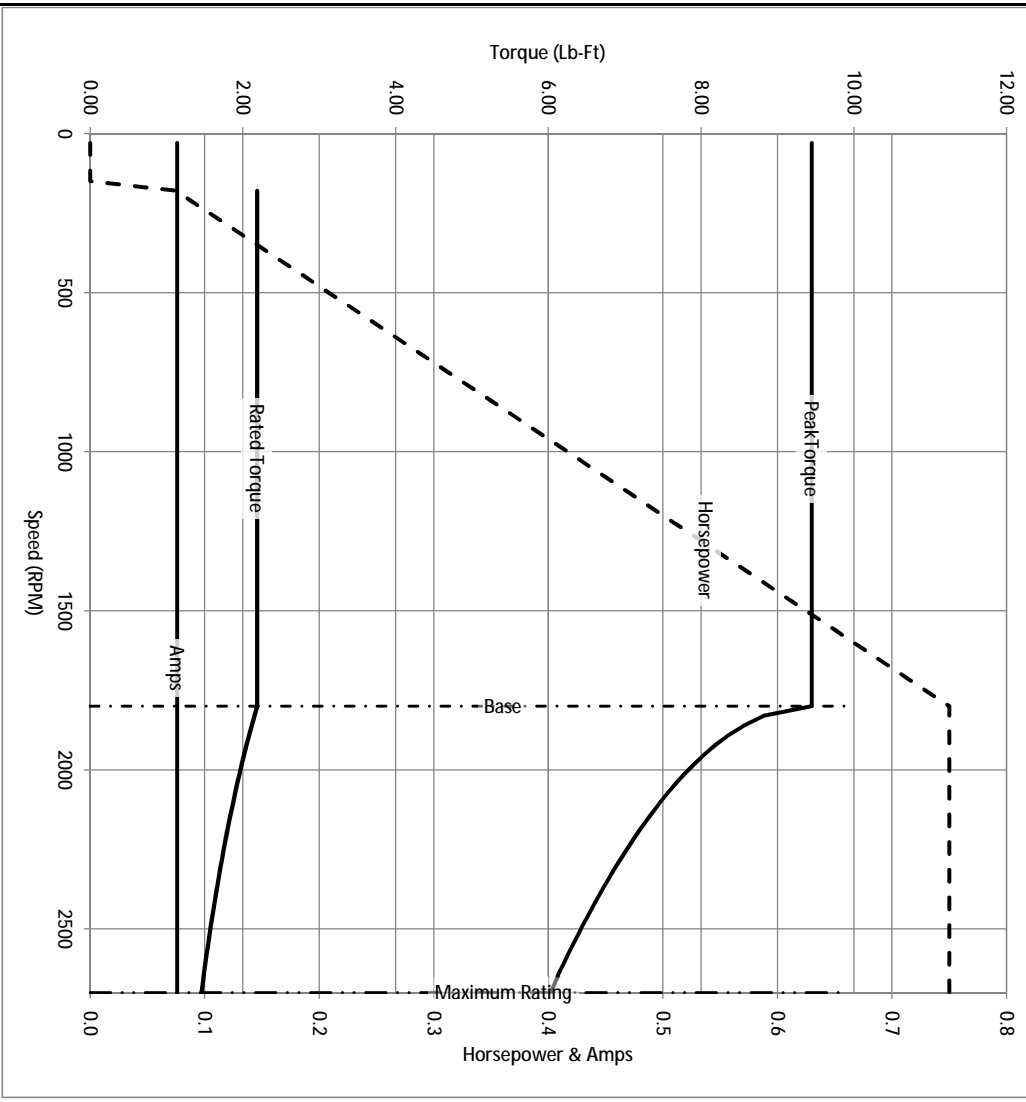
Load Characteristics at 460 Volts, 60 Hz, 0.75 HP

% of Rated Load	25	50	75	100	125	150	S.F.
Power Factor	32	50	64	73	80	83	
Efficiency	71.4	80.9	83.8	84.4	84	82.7	
Speed	1790	1778	1765	1752	1738	1721	
Line Amperes	0.787	0.87	0.992	1.14	1.32	1.54	

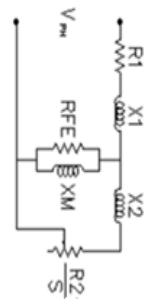
Baldor Electric Company Fort Smith, Arkansas



Catalog	IDXMT010	NP VOLTS	230/460	ENCLOSURE	XPFC	WVE CONN EQ CRT OHMS PER PHASE (BASE RATING, 20C)
FRAME	56C	NP AMPS	2.2/1.1	Base Volts	460	R1 11.500 X1 13.830
HP	0.75 HP	DUTY	Cont	Base AMPS	1.14	R2 6.690 X2 8.807
BASE SPEED	1800	MAX SAFE RPM	2700	Slip Hz	1.60	XM1 333.381
PHASE/HZ	3/60	AMB <sup>0</sup> /INSUL	40/F	WK <sup>2</sup> (lb-ft <sup>2</sup> )	0.1	



Remarks: Calculated Data



**BALDOR** DR BY ENR  
 CK BY  
 APP BY ENR  
 DATE 3/6/2013

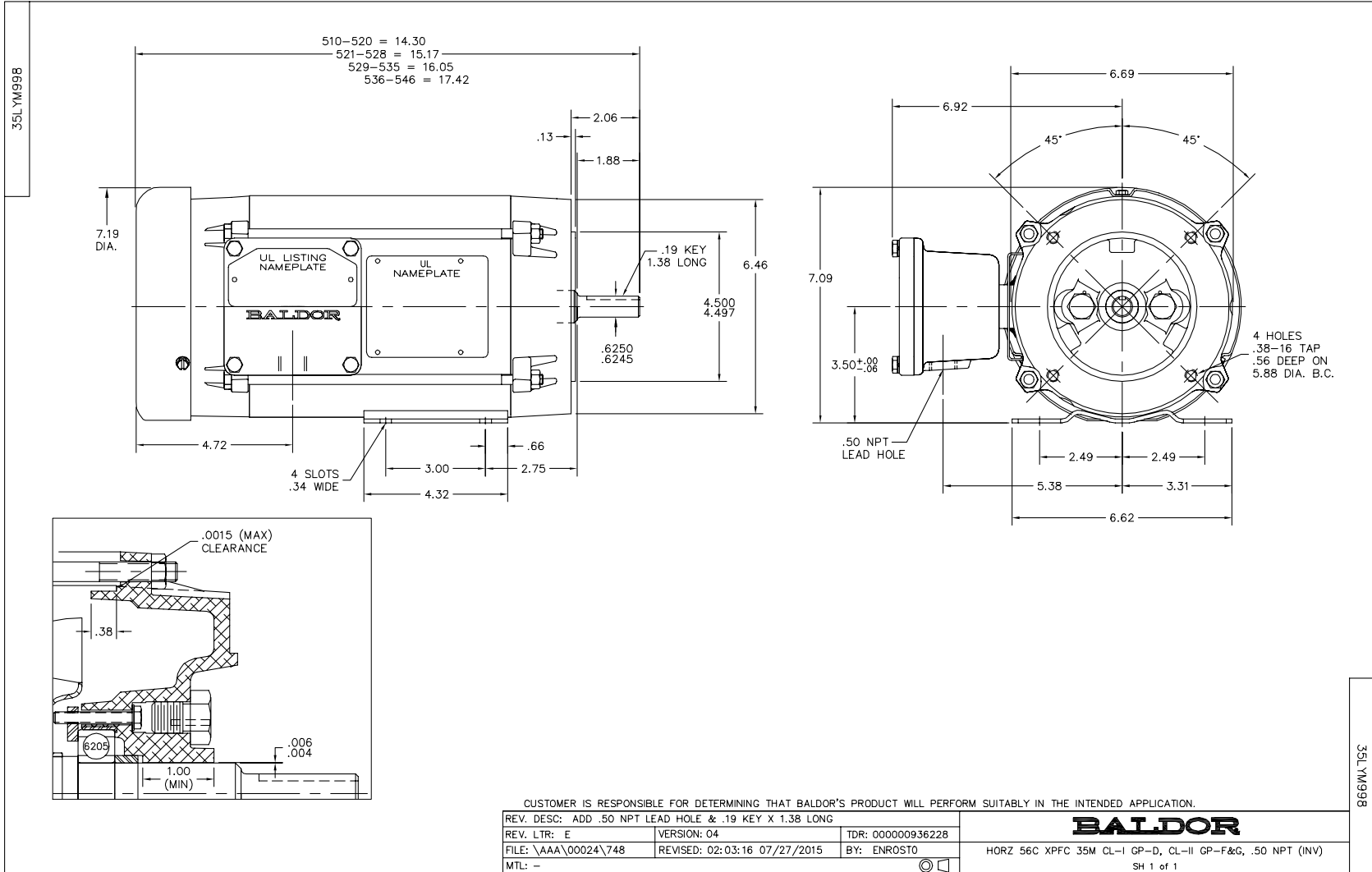
**35M998P67G1**

A-C MOTOR  
 PERFORMANCE CURVES

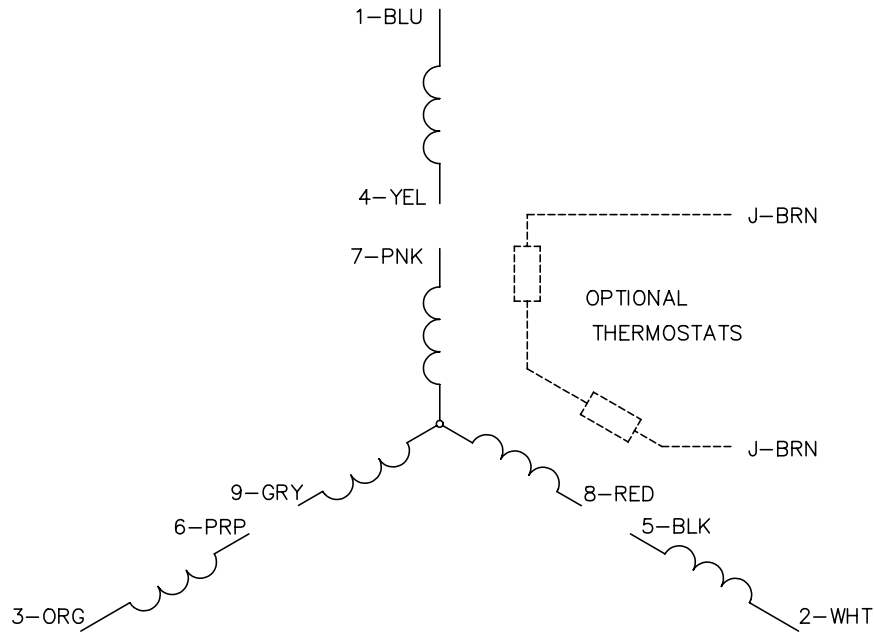
ISSUE DATE 3/6/2013

A MEMBER OF THE ABB GROUP





CD0005



LOW VOLTAGE  
(2Y)



LINE

HIGH VOLTAGE  
(1Y)



LINE

NOTES:

1. INTERCHANGE ANY TWO LINE LEADS TO REVERSE ROTATION.
2. OPTIONAL THERMOSTATS ARE PROVIDED WHEN SPECIFIED.
3. ACTUAL NUMBER OF INTERNAL PARALLEL CIRCUITS MAY BE A MULTIPLE OF THOSE SHOWN ABOVE.
4. LEAD COLORS ARE OPTIONAL. LEADS MUST ALWAYS BE NUMBERED AS SHOWN.

REV. DESC: REVISE TO SHOW OPTIONAL COLORS

REV. LTR: E BY: JLP

REVISED: 01/19/99 10:15

TDR: 0171435

90000

FILE: AAA00005140

MDL: -

MTL: -

**BALDOR ELECTRIC Co.**

3PH, DV, 9 LEADS

CD0005