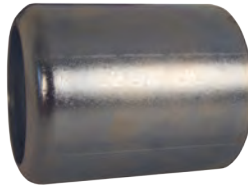


# Internal Expansion Ferrules



Hose ID	Hose OD		Ferrule ID	Plated Carbon Steel		Hose ID	Hose OD		Ferrule ID	Plated Carbon Steel	
	From:	To:		Part #	Price/E		From:	To:		Part #	Price/E
1"	1-24/64"	1-28/64"	1-7/16"	<b>IXF16-1</b>	<b>\$40.50</b>	3"	3-32/64"	3-36/64"	3-9/16"	<b>IXF48-T</b>	<b>\$75.30</b>
	1-28/64"	1-32/64"	1-1/2"	<b>IXF16-2</b>	<b>40.50</b>		3-36/64"	3-40/64"	3-5/8"	<b>IXF48-U</b>	<b>75.30</b>
	1-32/64"	1-36/64"	1-9/16"	<b>IXF16-3</b>	<b>40.50</b>		3-40/64"	3-44/64"	3-11/16"	<b>IXF48-V</b>	<b>75.30</b>
1 1/4"	1-40/64"	1-44/64"	1-11/16"	<b>IXF20-Z</b>	<b>38.00</b>	3-44/64"	3-48/64"	3-3/4"	<b>IXF48-W</b>	<b>75.30</b>	
	1-44/64"	1-48/64"	1-3/4"	<b>IXF20-1</b>	<b>38.00</b>	3-48/64"	3-52/64"	3-13/16"	<b>IXF48-X</b>	<b>75.30</b>	
	1-48/64"	1-52/64"	1-13/16"	<b>IXF20-2</b>	<b>38.00</b>	3-52/64"	3-56/64"	3-7/8"	<b>IXF48-Y</b>	<b>75.30</b>	
	1-52/64"	1-56/64"	1-7/8"	<b>IXF20-3</b>	<b>38.00</b>	3-56/64"	3-60/64"	3-15/16"	<b>IXF48-Z</b>	<b>75.30</b>	
	1-56/64"	1-60/64"	1-15/16"	<b>IXF20-4</b>	<b>38.00</b>	3-60/64"	4"	4"	<b>IXF48-1</b>	<b>81.25</b>	
	1-60/64"	2"	2"	<b>IXF20-5</b>	<b>38.00</b>	4"	4-4/64"	4-1/16"	<b>IXF48-2</b>	<b>81.25</b>	
1 1/2"	2"	2-4/64"	2-1/16"	<b>IXF20-6</b>	<b>38.00</b>	4-4/64"	4-8/64"	4-1/8"	<b>IXF48-3<sup>1</sup></b>	<b>81.25</b>	
	1-56/64"	1-60/64"	1-15/16"	<b>IXF24-Z</b>	<b>37.65</b>	4-8/64"	4-12/64"	4-3/16"	<b>IXF48-4<sup>1</sup></b>	<b>81.25</b>	
	1-60/64"	2"	2"	<b>IXF24-1</b>	<b>37.65</b>	4-12/64"	4-16/64"	4-1/4"	<b>IXF48-5<sup>1</sup></b>	<b>81.25</b>	
	2"	2-4/64"	2-1/16"	<b>IXF24-2</b>	<b>37.65</b>	4-36/64"	4-40/64"	4-5/8"	<b>IXF64-T</b>	<b>107.35</b>	
	2-4/64"	2-8/64"	2-1/8"	<b>IXF24-3</b>	<b>37.65</b>	4-40/64"	4-44/64"	4-11/16"	<b>IXF64-U</b>	<b>107.35</b>	
	2-8/64"	2-12/64"	2-3/16"	<b>IXF24-4</b>	<b>37.65</b>	4-44/64"	4-48/64"	4-3/4"	<b>IXF64-V</b>	<b>107.35</b>	
	2-12/64"	2-16/64"	2-1/4"	<b>IXF24-5</b>	<b>37.65</b>	4-48/64"	4-52/64"	4-13/16"	<b>IXF64-W</b>	<b>107.35</b>	
2"	2-16/64"	2-20/64"	2-5/16"	<b>IXF24-6</b>	<b>37.65</b>	4-52/64"	4-56/64"	4-7/8"	<b>IXF64-X</b>	<b>107.35</b>	
	2-20/64"	2-24/64"	2-3/8"	<b>IXF24-7</b>	<b>37.65</b>	4-56/64"	4-60/64"	4-15/16"	<b>IXF64-Y</b>	<b>107.35</b>	
	2-32/64"	2-36/64"	2-9/16"	<b>IXF32-Y</b>	<b>40.15</b>	4-60/64"	5"	5"	<b>IXF64-Z</b>	<b>107.35</b>	
	2-36/64"	2-40/64"	2-5/8"	<b>IXF32-Z</b>	<b>40.15</b>	5"	5-4/64"	5-1/16"	<b>IXF64-1</b>	<b>107.35</b>	
	2-40/64"	2-44/64"	2-11/16"	<b>IXF32-1</b>	<b>40.15</b>	5-4/64"	5-8/64"	5-1/8"	<b>IXF64-2<sup>1</sup></b>	<b>107.35</b>	
	2-44/64"	2-48/64"	2-3/4"	<b>IXF32-2</b>	<b>40.15</b>	5-8/64"	5-12/64"	5-3/16"	<b>IXF64-3<sup>1</sup></b>	<b>107.35</b>	
	2-48/64"	2-52/64"	2-13/16"	<b>IXF32-3</b>	<b>40.15</b>	5-12/64"	5-16/64"	5-1/4"	<b>IXF64-4<sup>1</sup></b>	<b>107.35</b>	
2 1/2"	2-52/64"	2-56/64"	2-7/8"	<b>IXF32-4</b>	<b>40.15</b>	5-16/64"	5-20/64"	5-5/16"	<b>IXF64-5<sup>1</sup></b>	<b>107.35</b>	
	2-56/64"	2-60/64"	2-15/16"	<b>IXF32-5</b>	<b>40.15</b>	6-40/64"	6-44/64"	6-11/16"	<b>IXF96-1</b>	<b>POR</b>	
	2-60/64"	3"	3"	<b>IXF32-6</b>	<b>40.15</b>	6-44/64"	6-48/64"	6-3/4"	<b>IXF96-2</b>	<b>POR</b>	
	3"	3-4/64"	3-1/16"	<b>IXF32-7</b>	<b>40.15</b>	6-46/64"	6-50/64"	6-25/32"	<b>IXF96-3</b>	<b>POR</b>	
	3"	3-4/64"	3-1/16"	<b>IXF40-1</b>	<b>59.50</b>	6-48/64"	6-52/64"	6-13/16"	<b>IXF96-4</b>	<b>POR</b>	
	3-4/64"	3-8/64"	3-1/8"	<b>IXF40-2</b>	<b>59.50</b>	6-52/64"	6-56/64"	6-7/8"	<b>IXF96-5</b>	<b>POR</b>	
	3-8/64"	3-12/64"	3-3/16"	<b>IXF40-3</b>	<b>59.50</b>	6-56/64"	6-60/64"	6-15/16"	<b>IXF96-6</b>	<b>POR</b>	
3"	3-12/64"	3-16/64"	3-1/4"	<b>IXF40-4</b>	<b>59.50</b>	6-60/64"	7"	7"	<b>IXF96-7</b>	<b>POR</b>	
	3-16/64"	3-20/64"	3-5/16"	<b>IXF40-5</b>	<b>59.50</b>	7"	7-4/64"	7-1/16"	<b>IXF96-8</b>	<b>POR</b>	
	3-20/64"	3-24/64"	3-3/8"	<b>IXF40-6</b>	<b>59.50</b>	7-4/64"	7-8/64"	7-1/8"	<b>IXF96-9</b>	<b>POR</b>	
	3-24/64"	3-28/64"	3-7/16"	<b>IXF40-7</b>	<b>59.50</b>	7-8/64"	7-12/64"	7-3/16"	<b>IXF96-10</b>	<b>POR</b>	
	3-28/64"	3-32/64"	3-1/2"	<b>IXF40-8</b>	<b>59.50</b>	7-12/64"	7-16/64"	7-1/4"	<b>IXF96-11</b>	<b>POR</b>	
						7-16/64"	7-20/64"	7-5/16"	<b>IXF96-12</b>	<b>POR</b>	
						7-18/64"	7-22/64"	7-11/32"	<b>IXF96-13</b>	<b>POR</b>	
						7-20/64"	7-24/64"	7-3/8"	<b>IXF96-14</b>	<b>POR</b>	

**M**

<sup>1</sup> for hoses using ferrule sizes IXF48-3 thru IXF48-5 and IXF64-2 thru IXF64-5, consult Dixon for working pressures