

**BALDOR® • RELIANCE** 

**Product Information Packet**

**JL1317A**

**2HP,3450RPM,1PH,60HZ,56J,3528L,OPEN,F1**

Part Detail							
Revision:	BJ	Status:	PRD/A	Change #:		Proprietary:	No
Type:	AC	Elec. Spec:	35WGW183	CD Diagram:	CD0307	Mfg Plant:	
Mech. Spec:	35E522	Layout:	35LYE522	Poles:	02	Created Date:	06-21-2007
Base:	N	Eff. Date:	06-08-2018	Leads:	4#14 A&J,1#18 B PH,1#10 #1TH		

Specs			
Catalog Number:	JL1317A	Inverter Code:	Not Inverter
Enclosure:	OPEN	KVA Code:	G
Frame:	56J	Lifting Lugs:	No Lifting Lugs
Frame Material:	Steel	Locked Bearing Indicator:	Locked Bearing
Output @ Frequency:	2.000 HP @ 60 HZ	Motor Lead Quantity/Wire Size:	4 @ 14 AWG, A&J
Synchronous Speed @ Frequency:	3600 RPM @ 60 HZ	Motor Lead Exit:	Terminal Panel
Voltage @ Frequency:	115.0 V @ 60 HZ	Motor Lead Termination:	None
	230.0 V @ 60 HZ	Motor Type:	3528L
XP Class and Group:	None	Mounting Arrangement:	F1
XP Division:	Not Applicable	Power Factor:	69
Agency Approvals:	UR	Product Family:	General Purpose
	CSA	Pulley End Bearing Type:	Ball
Auxillary Box:	No Auxillary Box	Pulley Face Code:	C-Face
Auxillary Box Lead Termination:	None	Pulley Shaft Indicator:	Ext Thread
Base Indicator:	No Mounting	Rodent Screen:	None
Bearing Grease Type:	Polyrex EM (-20F +300F)	RoHS Status:	ROHS COMPLIANT
Blower:	None	Shaft Extension Location:	Pulley End
Current @ Voltage:	13.000 A @ 230.0 V	Shaft Ground Indicator:	No Shaft Grounding

	26.000 A @ 115.0 V	<b>Shaft Rotation:</b>	Fixed Opposite Standard
<b>Design Code:</b>	L	<b>Shaft Slinger Indicator:</b>	No Slinger
<b>Drip Cover:</b>	Drip Cover	<b>Speed Code:</b>	Single Speed
<b>Duty Rating:</b>	CONT	<b>Motor Standards:</b>	NEMA
<b>Electrically Isolated Bearing:</b>	Not Electrically Isolated	<b>Starting Method:</b>	Direct on line
<b>Feedback Device:</b>	NO FEEDBACK	<b>Thermal Device - Bearing:</b>	None
<b>Front Face Code:</b>	Terminal Panel	<b>Thermal Device - Winding:</b>	Do Not Use Eve-Not Valid
<b>Front Shaft Indicator:</b>	None	<b>Vibration Sensor Indicator:</b>	No Vibration Sensor
<b>Heater Indicator:</b>	No Heater	<b>Winding Thermal 1:</b>	Automatic Thermal Overload
<b>Insulation Class:</b>	B	<b>Winding Thermal 1 Location:</b>	SB
		<b>Winding Thermal 2:</b>	None

<b>Nameplate NP1257L</b>	
<b>CAT.NO.</b>	JL1317A
<b>SPEC.</b>	35E522W183
<b>HP</b>	2
<b>VOLTS</b>	115/230
<b>AMP</b>	26/13
<b>RPM</b>	3450
<b>FRAME</b>	56J
<b>SER.F.</b>	1.20
<b>NEMA-NOM-EFF</b>	70
<b>RATING</b>	40C AMB-CONT
<b>CC</b>	
<b>DE</b>	6205
<b>ENCL</b>	OPEN
<b>SFA</b>	27.6/13.8
<b>CODE</b>	G
<b>PF</b>	69
<b>ODE</b>	6203
<b>HZ</b>	60
<b>DES</b>	L
<b>CL</b>	B
<b>PH</b>	1
<b>USABLE AT 208V</b>	13
<b>SN</b>	

Parts List		
Part Number	Description	Quantity
SA024304	SA 35E522W183	1.000 EA
RA020354	RA 35E522W183	1.000 EA
EC1645A06SP	ELEC CAP, 645-774 MFD, 125V, 2.06D X 4.	1.000 EA
WD3006A01	RSS-2-103JT 2W 10K RES. METAL OXIDE 5%	1.000 EA
RM1001A01	GROMMET "MIDSTATES"	1.000 EA
11XW0832G06	#8-32 X 3/8, TAPTITE II, HEX WSHR SLTD	1.000 EA
35EP3202A02SP	FR ENDPLATE, MACH	1.000 EA
SP1033A01	INSULATOR MODEL 35 TERM PANEL	1.000 EA
51XW0832A07	8-32 X .44, TAPTITE II, HEX WSHR SLTD SE	2.000 EA
85XU0407S04	4X1/4 U DRIVE PIN STAINLESS	2.000 EA
51XB1016A05	10-16X5/16HX WA SL SR TYB (F/S)	2.000 EA
HW5100A03	WAVY WASHER (W1543-017)	1.000 EA
35AD2000	AIR BAFFLE - GALVANNEAL	1.000 EA
60XW0632A06	6-32 X 3/8 TORX HEAD SCREW TAPTITE II	4.000 EA
51XN1032A20	10-32 X 1 1/4 HX WS SL SR	2.000 EA
35FH4500A02	DRIP COVER, STAMPED (W/ PRIMER	1.000 EA
51XW0832A07	8-32 X .44, TAPTITE II, HEX WSHR SLTD SE	2.000 EA
35CB4500SP	TERMINAL BOX LID STAMPED	1.000 EA
51XW0832A07	8-32 X .44, TAPTITE II, HEX WSHR SLTD SE	2.000 EA
LB1009N	LABEL,ROTATION DIRECTION (ON ROLLS)	1.000 EA
MJ1000A02	GREASE, POLYREX EM EXXON (USe 4824-15A)	0.050 LB
MG1000G27	MED CHARCOAL METALLIC GREY 400-0096	0.017 GA
WD1000D90	T&B RC2577FM,90 DEG INSUL. FLAG TERMINAL	1.000 EA
HA3100A15	THRUBOLT 10-32 X 8.375	4.000 EA

<b>Parts List (continued)</b>		
<b>Part Number</b>	<b>Description</b>	<b>Quantity</b>
WD1000A15	3-520132-2 AMP FLAG (4M/RL NON-CANC/NON-	2.000 EA
35CB4802A02SP	CAPACITOR COVER, STAMPED X	1.000 EA
35EP3402A00	MASTER DE,205 BRG,OPEN,W/TIGHTSLEEVE	1.000 EA
SP5066A01	35 TERM PANEL SWITCH W/E-BLK, 8-RED	1.000 EA
LB1118	LABEL,WARNING (ROLL LABEL)	1.000 EA
LC0307	1PH, DV, FIX, W & W/O THERM, TERM PLATE,	1.000 EA
NP1257L	ALUM UL CSA CC THERMAL REV MTG	1.000 EA
36PA1000	PKG GRP, PRINT PK1016A06	1.000 EA
PK3083T	STYROFOAM PACKING CRADLE	1.000 EA
PK3088	MICROFOAM, 8"X"8 PERF. SHEETS 5,400/RL	1.000 EA
PE-0000001	ZRTG PE ASSEMBLY	1.000 EA

**AC Induction Motor Performance Data**

Record # 9776 - Typical performance - not guaranteed values

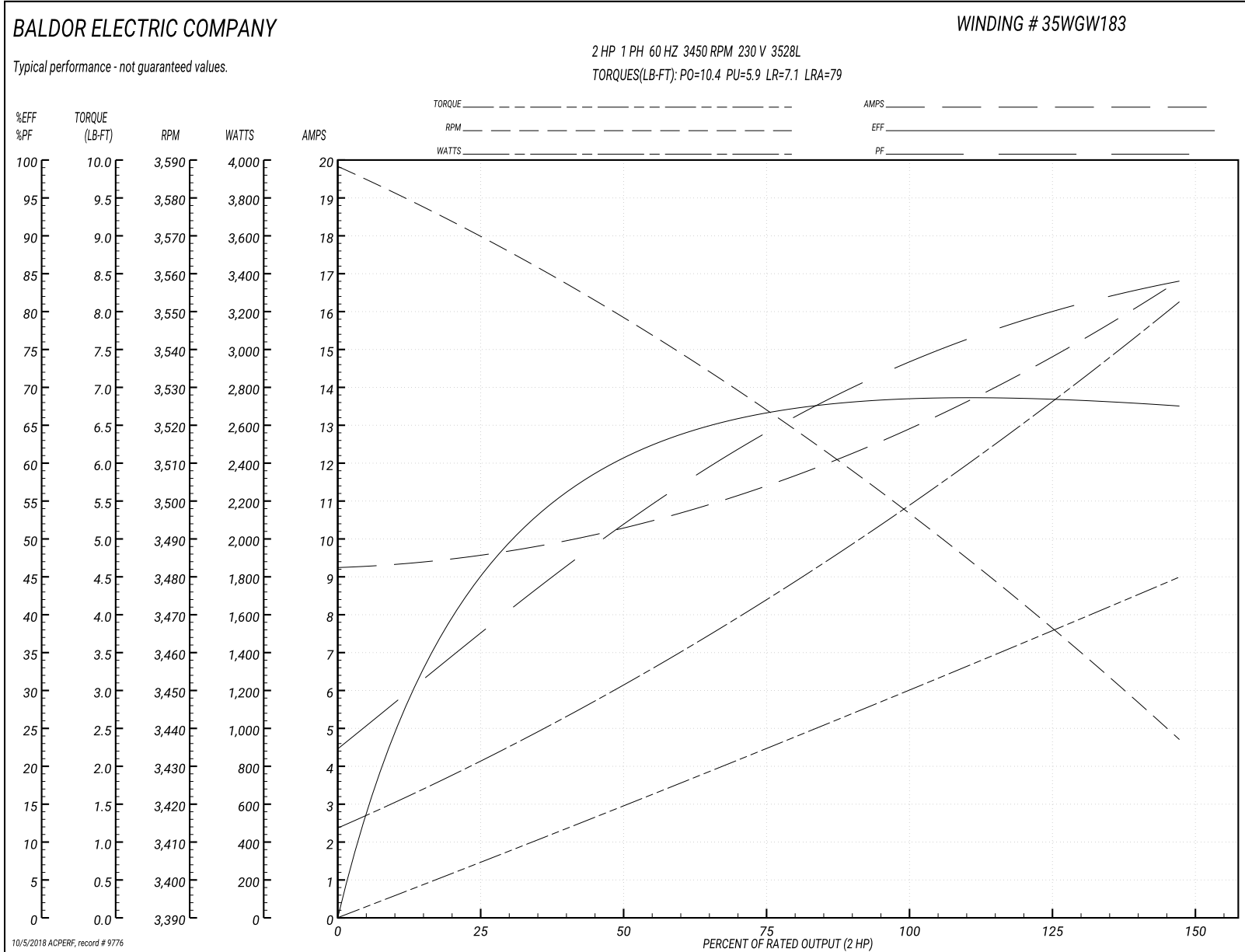
<b>Winding:</b> 35WGW183-R001	<b>Type:</b> 3528L	<b>Enclosure:</b> OPEN
-------------------------------	--------------------	------------------------

Nameplate Data				230 V, 60 Hz: High Voltage Connection	
Rated Output (HP)	2			Full Load Torque	3 LB-FT
Volts	115/230			Start Configuration	direct on line
Full Load Amps	26/13			Breakdown Torque	10.4 LB-FT
R.P.M.	3450			Pull-up Torque	5.9 LB-FT
Hz	60	Phase	1	Locked-rotor Torque	7.1 LB-FT
NEMA Design Code	L	KVA Code	G	Starting Current	79 A
Service Factor (S.F.)	1.2			No-load Current	9.3 A
NEMA Nom. Eff.	70	Power Factor	69	Line-line Res. @ 25°C	0.842 Ω A Ph 0.843 Ω B Ph
Rating - Duty	40C AMB-CONT			Temp. Rise @ Rated Load	77°C
S.F. Amps	27.6/13.8			Temp. Rise @ S.F. Load	87°C

Load Characteristics 230 V, 60 Hz, 2 HP

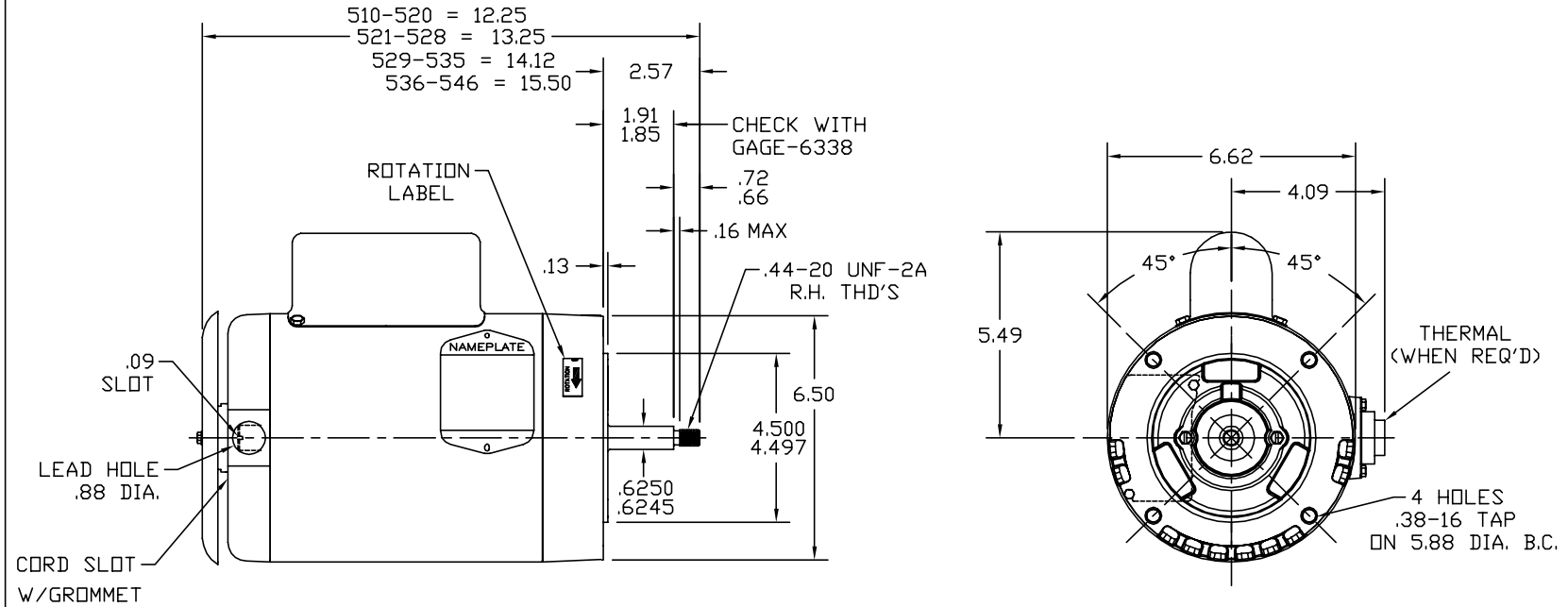
% of Rated Load	25	50	75	100	125	150	S.F.
Power Factor	38	53	65	71	80	84	78
Efficiency	46	60	66	70	68	67.5	68.4
Speed	3569	3547	3523	3498	3469	3436	3475
Line amperes	9.5	10.3	11.4	13	14.7	16.8	13.8

Performance Graph at 230V, 60Hz, 2.0HP Typical performance - Not guaranteed values





35LYE522



CUSTOMER IS RESPONSIBLE FOR DETERMINING THAT BALDOR'S PRODUCT WILL PERFORM SUITABLY IN THE INTENDED APPLICATION.

REV. DESC: REPLACE ENDPLATES		
REV. LTR: R	VERSION: 01	TDR: 000001041474
FILE: \AAA\00014\203	REVISED: 10:13:04 09/08/2017	BY: USJOBUR22
MTL: -	☉ □	

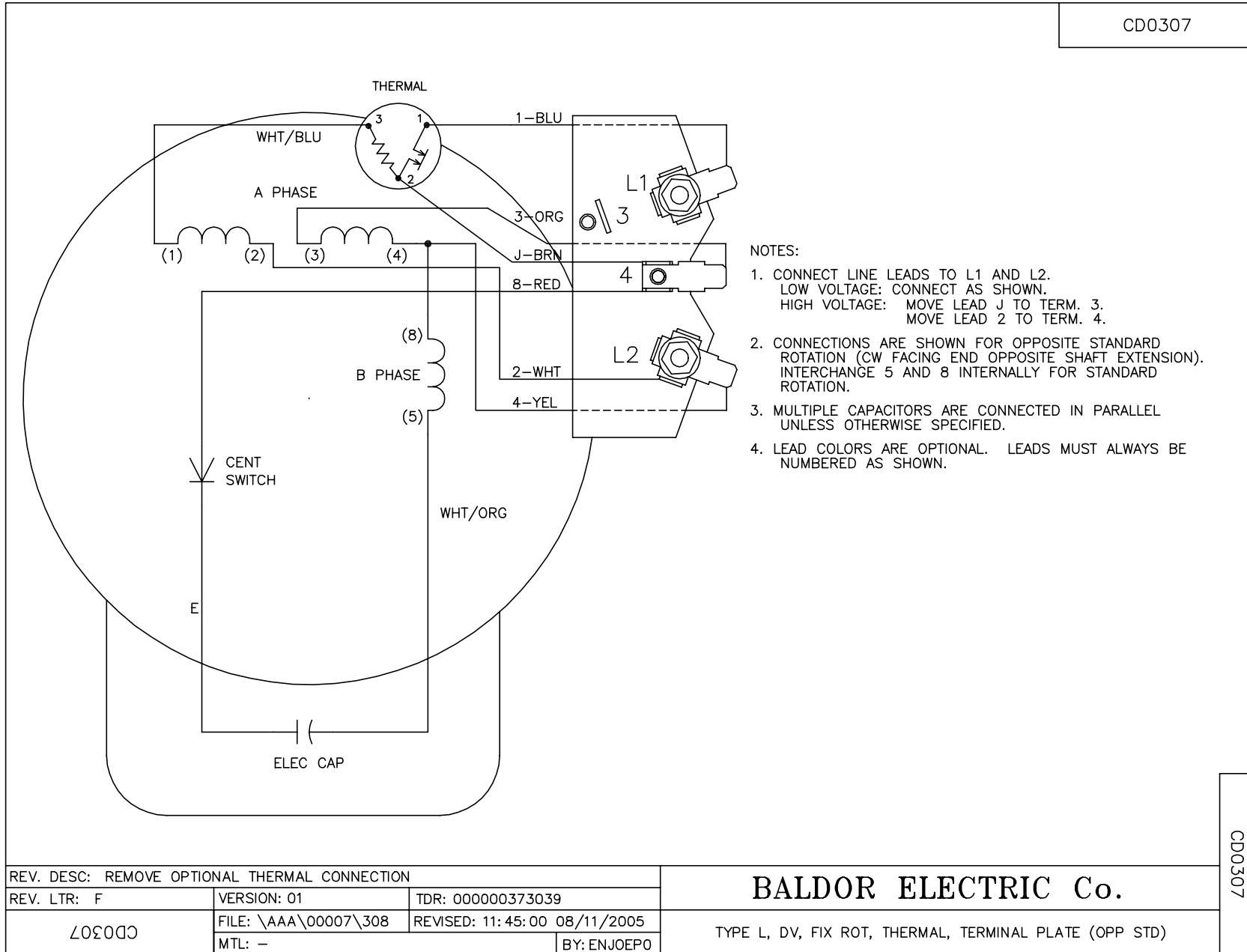
**BALDOR**

STD VERT 56J OPEN 35L W/DRIP COVER

SH 1 of 1

35LYE522

CD0307



CD0307