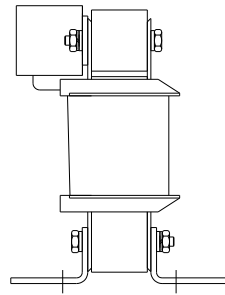
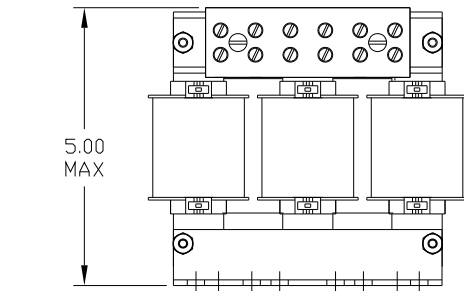


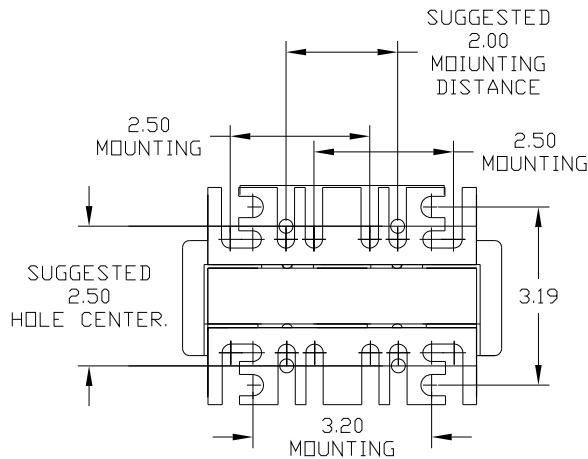
CATALOG NO	VOLTAGE	NEC MOTOR HP	NEC MOTOR CURRENT	WATTS LOSS	APPROX. WEIGHT-LBS	TORQUE (LB-IN)
KDRUL B2L	480	15	21	65	8	20
KDRUL B1L	480	20	27	79	8	20
KDRUL B2H	480	15	21	133	7	20
KDRUL B1P	480	10	14	NOTE: 1	7	20
KDRUL B22L	208/240	5.0	16.7	38	8	20
KDRUL B23L	208/240	7.5	24.2	48	8	20
KDRUL B25H	208/240	5.0	16.7	53.1	8	20
KDRUL B26H	208/240	7.5	24.2	66.5	8	20
KDRUL B45L	575/600	15	17	66.2	8	20
KDRUL B44L	575/600	20	22	71.2	8	20
KDRUL B43L	575/600	25	27	76.7	8	20
KDRUL B42H	575/600	7.5	9	61	8	20
KDRUL B43H	575/600	10	11	71	8	20
KDRUL B44H	575/600	15	17	73	8	20



NOTE: A1, A2, B1, B2, C1, C2, MARKINGS ON COIL AND TERMINAL BLOCK FOR REFERENCE ONLY.

NOTE 1: WATTS LOSS WILL VARY DUE TO FUNDAMENTAL FREQUENCY, CARRIER FREQUENCY AND OTHER SYSTEM CHARACTERISTICS. KDR DRIVE REACTORS COMPLY WITH THE THERMAL AND ALTITUDE STANDARDS SET FORTH BY NEMA ST20-1992..

NEC MOTOR CURRENTS SHOWN IN THE 208/240 VOLT CHART ARE BASED ON HORSEPOWER AT 208 VOLT. 575/600 VOLT CHART USE THE 575 VOLT CURRENT RATING.



				TOLERANCES (EXCEPT AS NOTED):		7878 N. 86th STREET MILWAUKEE, WI 53224	
				DECIMAL			
				.XX ± .03 .XXX ± .01			
				FRACTIONAL ± 1/32			
				ANGULAR ± 1/2°		DRN BY DSW DATE 04/26/04 DWG. NO. DKDRULOPEN-2DG SCALE 1:2 APRVD. SHT. 1 OF 1	
NO	REVISION	DATE	BY				