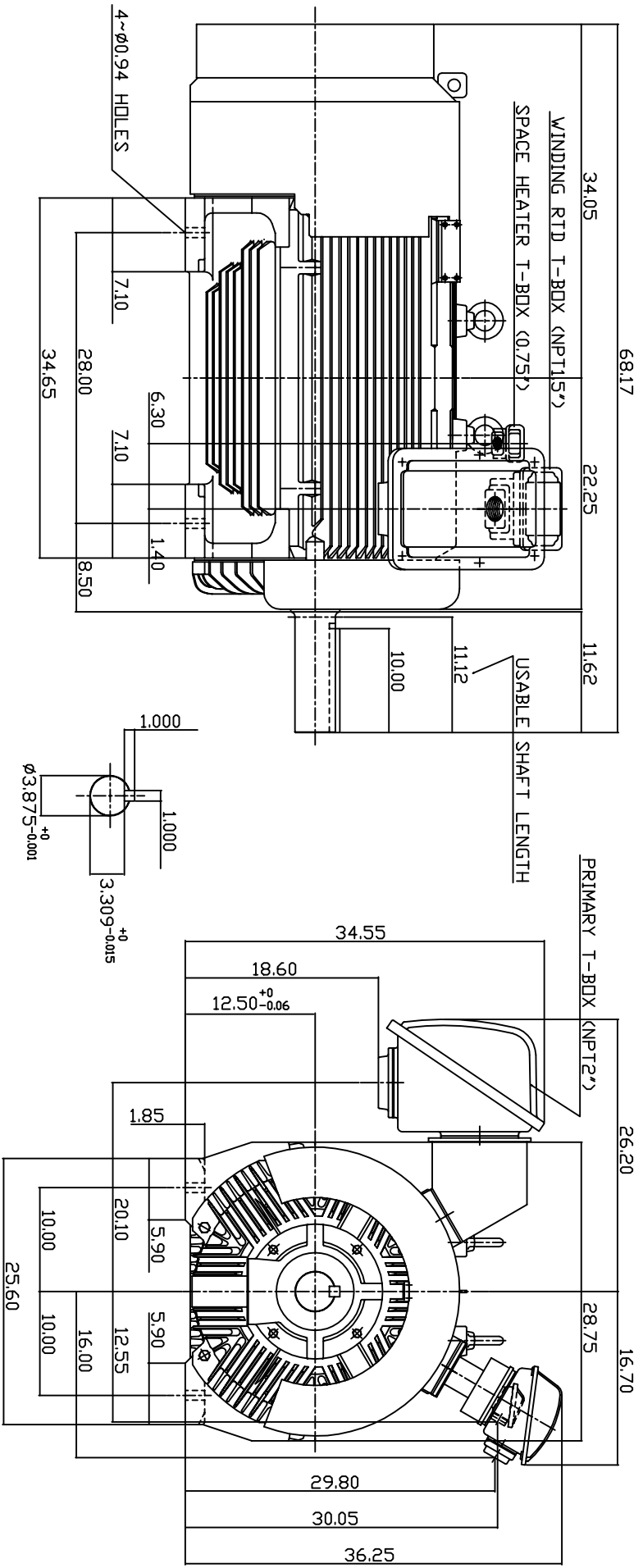


TYPE	OUTPUT		POLE	TIME RATING	VOLTAGE V	Hz	SYN SPEED R.P.M
	HP.	KW.					
AEHGTK	300	224	4	COND.	2300/4160	60	1800

TOTALLY ENCLOSED FAN-COOLED TYPE. SQUIRREL-CAGE ROTOR



- NOTE:
1. DIMENSIONS IN INCH.
 2. FRAME NO. 5009B
 3. F CLASS INSULATION, S.F.115
 4. FOR DIRECT FLEXIBLE COUPLING
 5. WITH SPACE HEATER 120 VOLT SINGLE PHASE 200 WATTS
 6. WITH 100 OHM PLATINUM WINDING RTD'S 2/PHASE
 7. BEARING SIZE: DRIVE END: 6324
NON-DRIVE END: 6320
 8. MOTOR APPROX. WEIGHT: 4000 LBS

DWN.	W.LLIN	APR -08 -2003	DATE	MAY 5, 2004
CHKD.	W.LLIN	APR -08 -2003	CATALOG NO.	KG3004
APPD.	C.WANG	APR -08 -2003	OUTLINE DIMENSIONS	
			3-PHASE INDUCTION MOTOR	
			DWG NO.	3A040T4484
			REV.	00

TW-56C

6 5 4 3 2 1