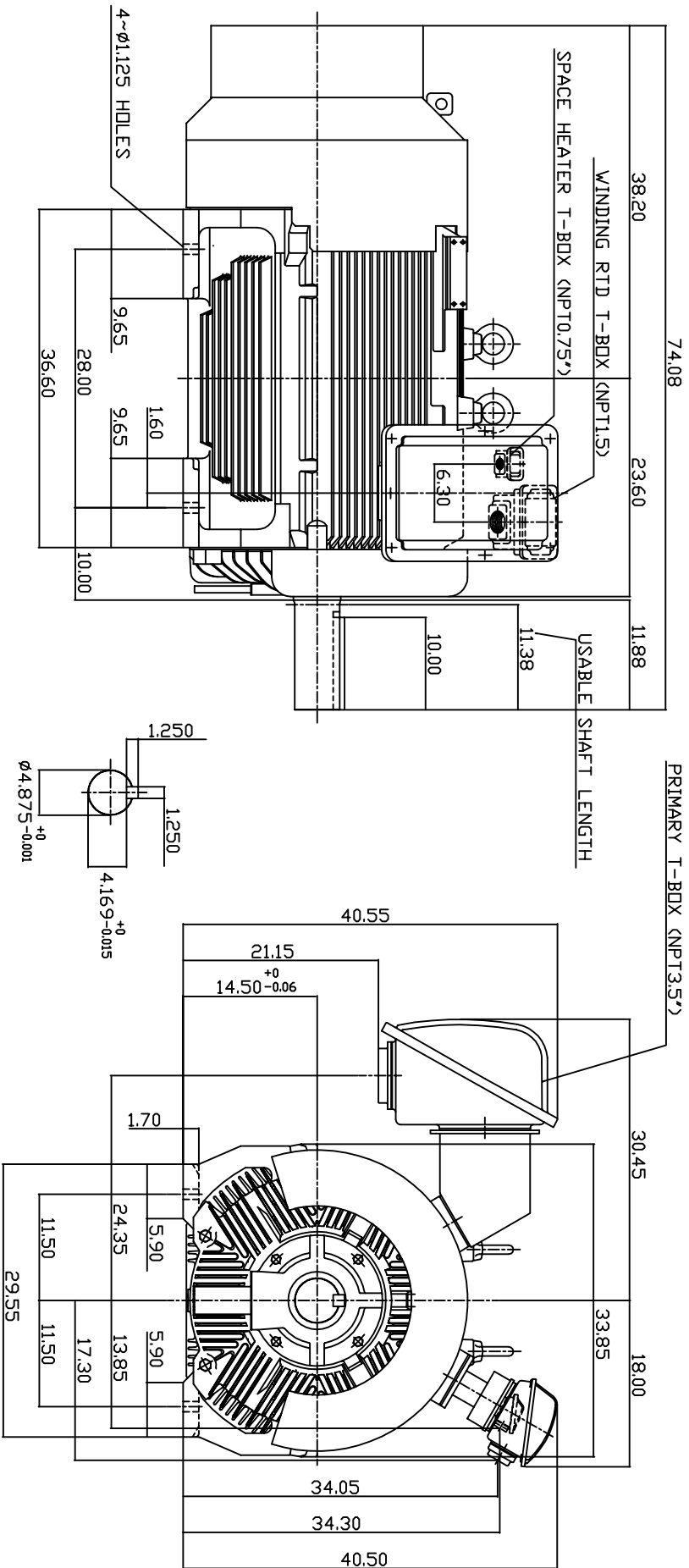


TYPE	OUTPUT		POLE	TIME RATING	VOLTAGE	HZ	SYNSPEED R.P.M
	HP.	K.W.					
AEHGTK	500	373	4	CONT.	2300/4160	60	1800

TOTALLY ENCLOSED FAN-COOLED TYPE. SQUIRREL-CAGE ROTOR



NOTE: 1. DIMENSIONS IN INCH.

2. FRAME NO. 5808B
3. F CLASS INSULATION, S.F.1.15
4. FOR DIRECT FLEXIBLE COUPLING
5. WITH SPACE HEATER 120 VOLT SINGLE PHASE 200 WATTS
6. WITH 100 OHM PLATINUM WINDING RTD'S 2/PHASE
7. BEARING SIZE: DRIVE END: 6326 NON-DRIVE END: 6322
8. MOTOR APPROX. WEIGHT: 5000 LBS

TW-66C

DWN.	V.LLIN	DATE
CHKD.	V.LLIN	MAY-03-2003
APPD.	C.VANG	MAY-03-2003

DATE	DESCRIPTION
MAY 6, 2004	OUTLINE DIMENSIONS
CATALOG NO. KG5004	3-PHASE INDUCTION MOTOR

TEC Westinghouse

DWG NO. 3A040T4583 REV: 00