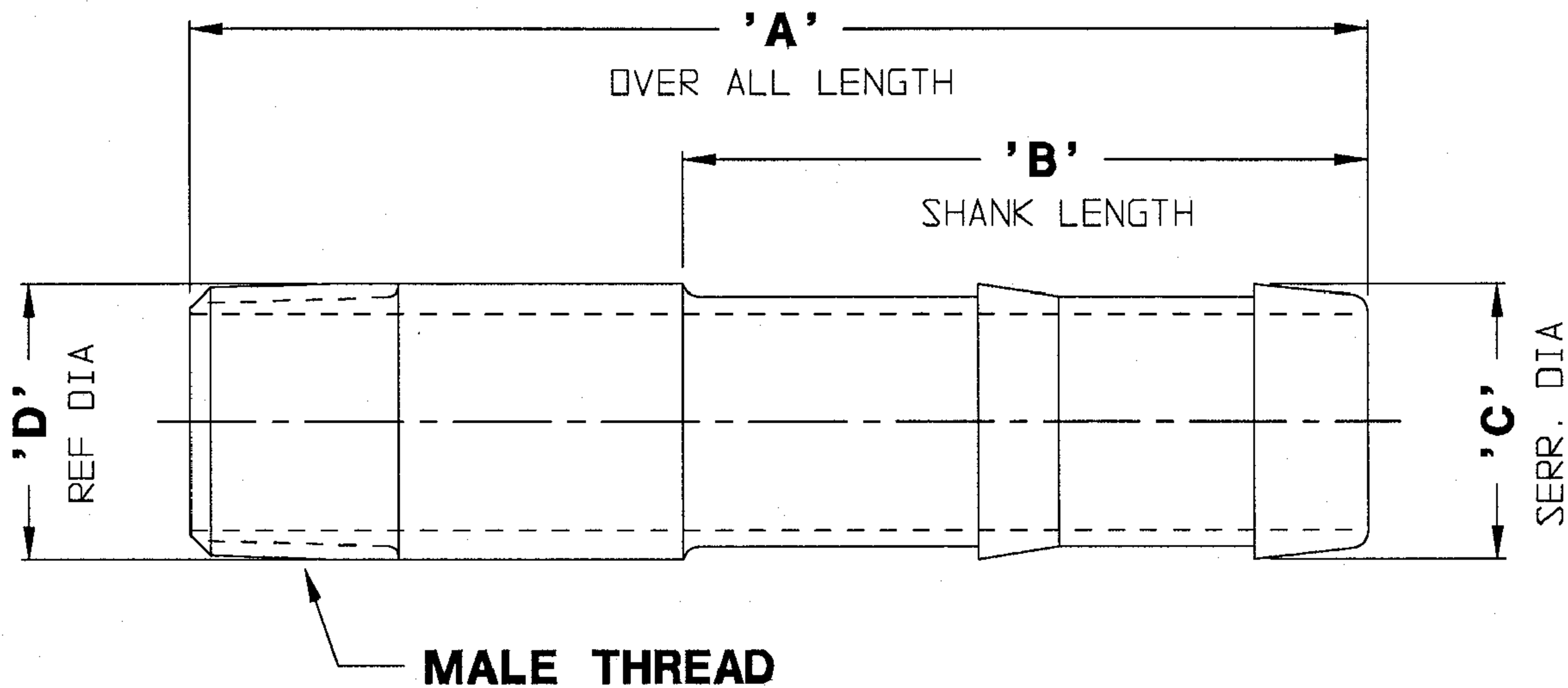


KRNXX2

8-14-08

CUSTOMER DWG



KRN1612	5	2.3/4	2.1/8	2.125	1.1/2 NPT
KRN1210	4.7/8	2.3/4	1.5/8	1.660	1.1/4 NPT
KRN1082	4.3/4	2.3/4	1.5/16	1.315	1 NPT
KRN882	4.5/8	2.5/8	1.3/32	1.315	1 NPT
KRN862	4.1/2	2.5/8	1.1/16	1.050	3/4 NPT
KRN662	4.1/4	2.3/8	27/32	1.050	3/4 NPT
KRN642	4.1/8	2.3/8	27/32	.840	1/2 NPT
KRN542	4.1/8	2.3/8	23/32	.840	1/2 NPT
KRN432	4	2.3/8	19/32	.675	3/8 NPT
KRN422	4	2.3/8	17/32	.540	1/4 NPT
<b>PART NO.</b>	<b>'A'</b>	<b>'B'</b>	<b>'C'</b>	<b>'D'</b>	<b>MALE THREAD</b>

**AGREEMENT TO MAINTAIN CONFIDENTIALITY**

This drawing is owned by Dixon Valve & Coupling Co. and shall be returned upon demand. It is loaned on condition that it shall not be copied or reproduced or submitted to others without the owners consent. In accepting it subject to this condition the recipient further agrees that this drawing or any design detail or concept disclosed herein shall not be used in any way detrimental to or in competition with the Owner. If the recipient does not agree to the terms of this agreement, they shall return this drawing immediately.



The Right Connection™

CUSTOMER DWG

DIXON VALVE & COUPLING CO.  
U. S. A.

TITLE

"KING" STEEL NIPPLES  
FOR TWO CLAMPS

DRAWN BY:

*Diane* 10/19/95

CHECKED BY:

*GW* 10-19-95

APPROVAL:

*[Signature]*  
10-19-95

MAT'L

CARBON STEEL PIPE

KRNXX2