

**BALDOR® • RELIANCE** 

**Product Information Packet**

**L5022**

**.75HP, 1140RPM, 1PH, 60HZ, 56, 3540L, XPFC, F1**

Part Detail							
Revision:	F	Status:	PRD/A	Change #:		Proprietary:	No
Type:	AC	Elec. Spec:	35WGN636	CD Diagram:	CD0001	Mfg Plant:	
Mech. Spec:	35E351	Layout:	35LYE351	Poles:	06	Created Date:	11-30-2012
Base:	RG	Eff. Date:	07-22-2015	Leads:	6#18		

Specs			
Catalog Number:	L5022	Insulation Class:	B
Enclosure:	XPFC	Inverter Code:	Not Inverter
Frame:	56	KVA Code:	K
Frame Material:	Steel	Lifting Lugs:	No Lifting Lugs
Output @ Frequency:	.750 HP @ 60 HZ	Locked Bearing Indicator:	No Locked Bearing
Synchronous Speed @ Frequency:	1200 RPM @ 60 HZ	Motor Lead Quantity/Wire Size:	6 @ 18 AWG
Voltage @ Frequency:	115.0 V @ 60 HZ	Motor Lead Exit:	Ko Box
	208.0 V @ 60 HZ	Motor Lead Termination:	Flying Leads
	230.0 V @ 60 HZ	Motor Type:	3540L
XP Class and Group:	CLI GP D	Mounting Arrangement:	F1
XP Division:	Division I	Power Factor:	65
Agency Approvals:	UL	Product Family:	General Purpose
	CSA	Pulley End Bearing Type:	Ball
Auxillary Box:	No Auxillary Box	Pulley Face Code:	Standard
Auxillary Box Lead Termination:	None	Pulley Shaft Indicator:	Standard
Base Indicator:	Rigid	Rodent Screen:	None
Bearing Grease Type:	Polyrex EM (-20F +300F)	Shaft Extension Location:	Pulley End
Blower:	None	Shaft Ground Indicator:	No Shaft Grounding

<b>Current @ Voltage:</b>	10.800 A @ 115.0 V	<b>Shaft Rotation:</b>	Reversible
	5.400 A @ 230.0 V	<b>Shaft Slinger Indicator:</b>	No Slinger
	5.700 A @ 208.0 V	<b>Speed Code:</b>	Single Speed
<b>Design Code:</b>	L	<b>Motor Standards:</b>	NEMA
<b>Drip Cover:</b>	No Drip Cover	<b>Starting Method:</b>	Direct on line
<b>Duty Rating:</b>	CONT	<b>Thermal Device - Bearing:</b>	NONE (OLD)
<b>Electrically Isolated Bearing:</b>	Not Electrically Isolated	<b>Thermal Device - Winding:</b>	Normally Closed Thermostat
<b>Feedback Device:</b>	NO FEEDBACK	<b>Vibration Sensor Indicator:</b>	No Vibration Sensor
<b>Front Face Code:</b>	Standard	<b>Winding Thermal 1:</b>	None
<b>Front Shaft Indicator:</b>	None	<b>Winding Thermal 2:</b>	None
<b>Heater Indicator:</b>	No Heater	<b>XP Temp Code:</b>	T2C

Nameplate NP0015XPSL	
NO.	[ ] CC [ ]
SER.	[ ]
SPEC.	35E351N636G1
CAT.NO.	L5022
HP	.75 T. CODE T2C
VOLTS	115/208-230
AMPS	10.8/5.7-5.4
RPM	1140
HZ	60 PH 1 CL B
SER.F.	1.00 DES L CODE K
RATING	40C AMB-CONT
FRAME	56 NEMA-NOM-EFF 68
USABLE AT 208V	PF 65
BLANK	[ ]

Parts List		
Part Number	Description	Quantity
SA255032	SA 35E351N636G1	1.000 EA
RA241836	RA 35E351N636G1	1.000 EA
EC1189A02SP	61B2D120189NNBA ELEC CAP, 189-227MFD, 12	1.000 EA
EC1270A02SP	ELEC CAP, 270-324 MFD, 125V, 1.48D X 3.	1.000 EA
35CB3001A01SP	EXPL CONDUIT BOX, MACH, 1/2" PIPE TAP LE	1.000 EA
11XW1032G06	10-32 X .38, TAPTITE II, HEX WSHR SLTD U	1.000 EA
HW3001B01	BRASS CUP WASHER, FOR #10 SCREW	1.000 EA
35EP3700A01SP	FR ENDPLATE, XPFC	1.000 EA
51XW0832A07	8-32 X .44, TAPTITE II, HEX WSHR SLTD SE	2.000 EA
SP5051A64	MODEL 35 TORQ STATIONARY SWITCH FOR XP	1.000 EA
HW5100A03	WAVY WASHER (W1543-017)	1.000 EA
35EP3701A01	PU ENDPLATE, XPFC - 205 BRG	1.000 EA
XY3118A12	5/16-18 HEX NUT DIRECTIONAL SERRATION	4.000 EA
51XB1214A16	12-14X1.00 HXWSSLD SERTYB	1.000 EA
35FH4005A01SP	IEC FH NO GREASER W/PRIMED	1.000 EA
51XW1032A06	10-32 X .38, TAPTITE II, HEX WSHR SLTD S	3.000 EA
35CB3500A01SP	CONDUIT BOX LID, MACH	1.000 EA
51XN2520A16	SCREW, HEX WS SLT, ZN, 1/4-20 X 1.00	4.000 EA
HW2501D13	KEY, 3/16 SQ X 1.375	1.000 EA
HA7000A04	KEY RETAINER 0.625 DIA SHAFTS	1.000 EA
85XU0407S04	4X1/4 U DRIVE PIN STAINLESS	6.000 EA
NP0018F	ALUM UL XP CONDUIT BOX NAMEPLATE	1.000 EA
MJ1000A02	GREASE, POLYREX EM EXXON (USe 4824-15A)	0.050 LB
MG1025G29	WILKOFAS, 789.229, DARK CHARCOAL GRAY	0.017 GA

<b>Parts List (continued)</b>		
<b>Part Number</b>	<b>Description</b>	<b>Quantity</b>
35FN3002A05SP	EXFN, PLASTIC, 6.376 OD, .638 ID	1.000 EA
HA3104A34	THRUBOLT .31-18 X 11.625	4.000 EA
HA6003A52	CLAMP, CAPACITOR, WHITE ZINC PLATED	1.000 EA
51XW0832A07	8-32 X .44, TAPTITE II, HEX WSHR SLTD SE	1.000 EA
LB1119N	WARNING LABEL	1.000 EA
LC0081	CONNECTION LABEL X	1.000 EA
NP0015XPSL	SS XP UL CSA CC CL-I GP-D	1.000 EA
36PA1000	PKG GRP, PRINT PK1016A06	1.000 EA
MN416A01	TAG-INSTAL-MAINT no wire (1200/bx) 5/18	1.000 EA

**AC Induction Motor Performance Data**

Record # 40729 - Typical performance - not guaranteed values

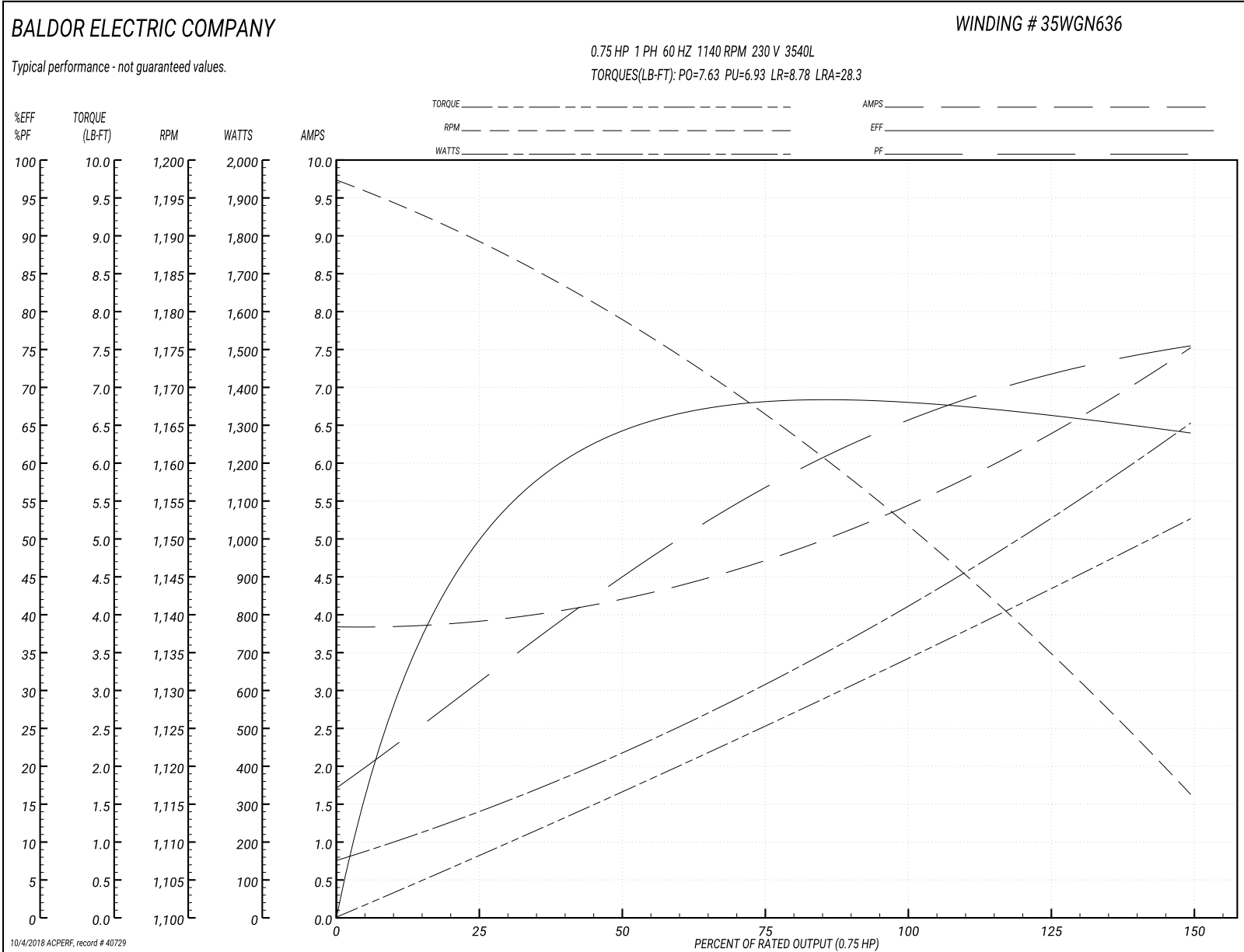
<b>Winding:</b> 35WGN636-R001	<b>Type:</b> 3540L	<b>Enclosure:</b> XPFC
-------------------------------	--------------------	------------------------

Nameplate Data				230 V, 60 Hz: High Voltage Connection	
Rated Output (HP)	.75			Full Load Torque	3.42 LB-FT
Volts	115/208-230			Start Configuration	direct on line
Full Load Amps	10.8/5.7-5.4			Breakdown Torque	7.63 LB-FT
R.P.M.	1140			Pull-up Torque	6.93 LB-FT
Hz	60	Phase	1	Locked-rotor Torque	8.78 LB-FT
NEMA Design Code	L	KVA Code	K	Starting Current	28.3 A
Service Factor (S.F.)	1			No-load Current	3.81 A
NEMA Nom. Eff.	68	Power Factor	65	Line-line Res. @ 25°C	2.879 Ω A Ph 2.6174 Ω B Ph
Rating - Duty	40C AMB-CONT			Temp. Rise @ Rated Load	70°C

Load Characteristics 230 V, 60 Hz, 0.75 HP

% of Rated Load	25	50	75	100	125	150
Power Factor	31	46	57	65	71	76
Efficiency	49.5	62.8	67.8	68.7	67.2	63.4
Speed	1187.4	1177.7	1166.1	1152.9	1137.5	1114.3
Line amperes	3.94	4.24	4.73	5.42	6.32	7.57

Performance Graph at 230V, 60Hz, 0.75HP Typical performance - Not guaranteed values





**AC Induction Motor Performance Data**

Record # 40730 - Typical performance - not guaranteed values

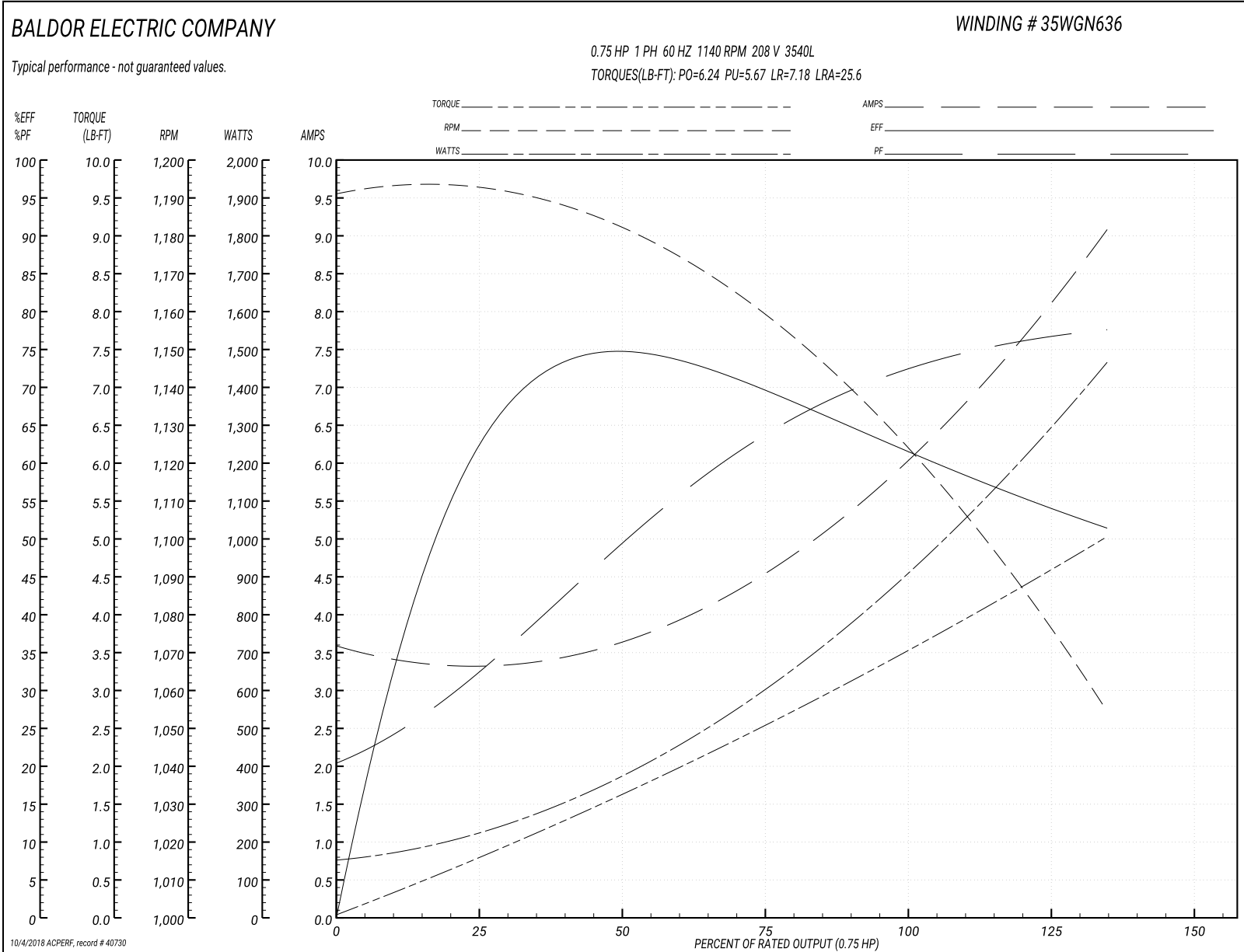
<b>Winding:</b> 35WGN636-R001	<b>Type:</b> 3540L	<b>Enclosure:</b> XPFC
-------------------------------	--------------------	------------------------

Nameplate Data				208 V, 60 Hz: High Voltage Connection	
Rated Output (HP)	.75			Full Load Torque	3.48 LB-FT
Volts	115/208-230			Start Configuration	direct on line
Full Load Amps	10.8/5.7-5.4			Breakdown Torque	6.24 LB-FT
R.P.M.	1140			Pull-up Torque	5.67 LB-FT
Hz	60	Phase	1	Locked-rotor Torque	7.18 LB-FT
NEMA Design Code	L	KVA Code	K	Starting Current	25.6 A
Service Factor (S.F.)	1			No-load Current	3.35 A
NEMA Nom. Eff.	68	Power Factor	65	Line-line Res. @ 25°C	2.879 Ω A Ph 2.6174 Ω B Ph
Rating - Duty	40C AMB-CONT			Temp. Rise @ Rated Load	78°C

Load Characteristics 208 V, 60 Hz, 0.75 HP

% of Rated Load	25	50	75	100	125	150
Power Factor	35	52	64	72	77	78
Efficiency	53.2	65.7	68	66	60	46.9
Speed	1186.1	1172.1	1156.2	1136	1099.5	1028.7
Line amperes	3.51	3.96	4.67	5.68	7.32	9.95

Performance Graph at 208V, 60Hz, 0.75HP Typical performance - Not guaranteed values



**AC Induction Motor Performance Data**

Record # 53202 - Typical performance - not guaranteed values

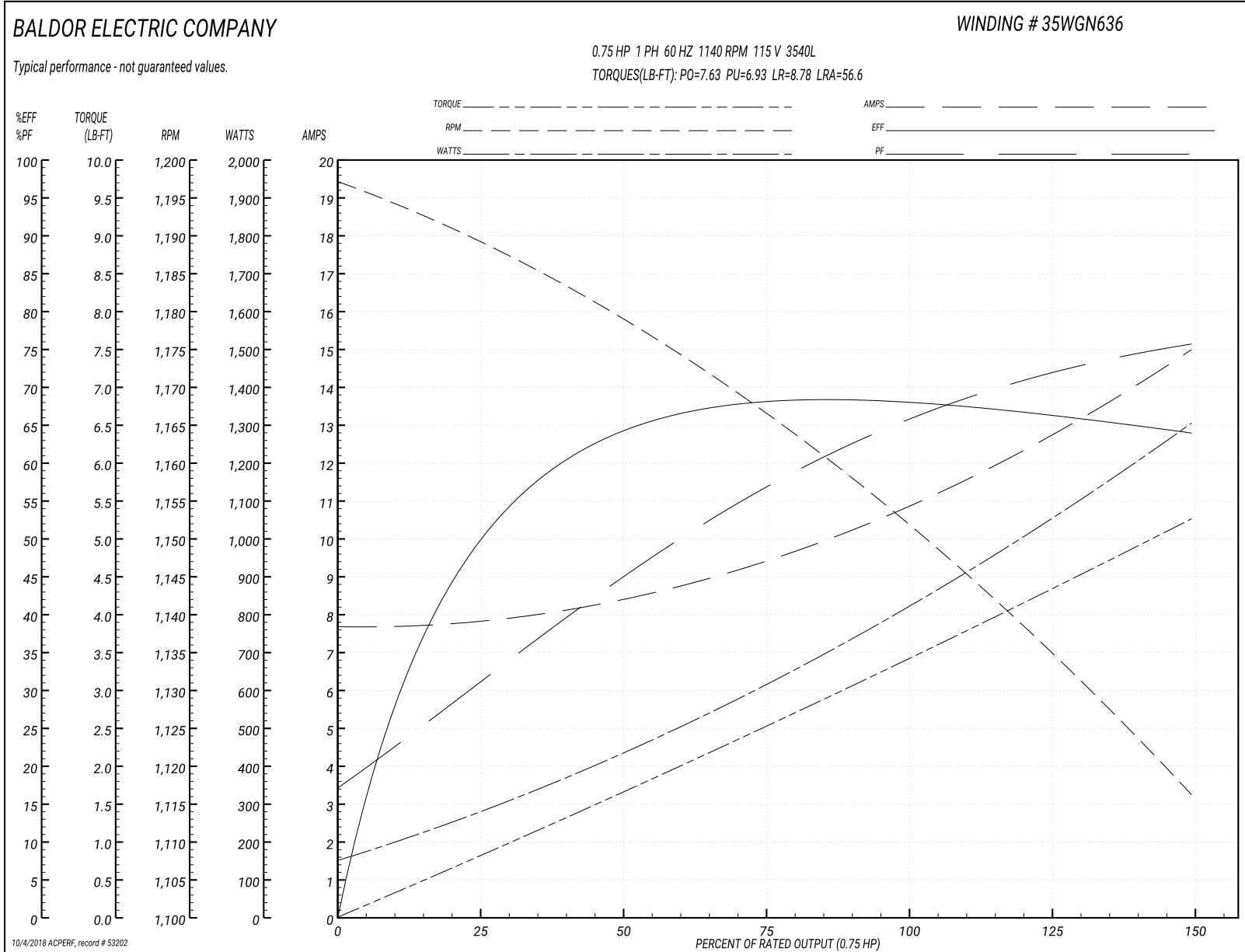
<b>Winding:</b> 35WGN636-R001	<b>Type:</b> 3540L	<b>Enclosure:</b> XPFC
-------------------------------	--------------------	------------------------

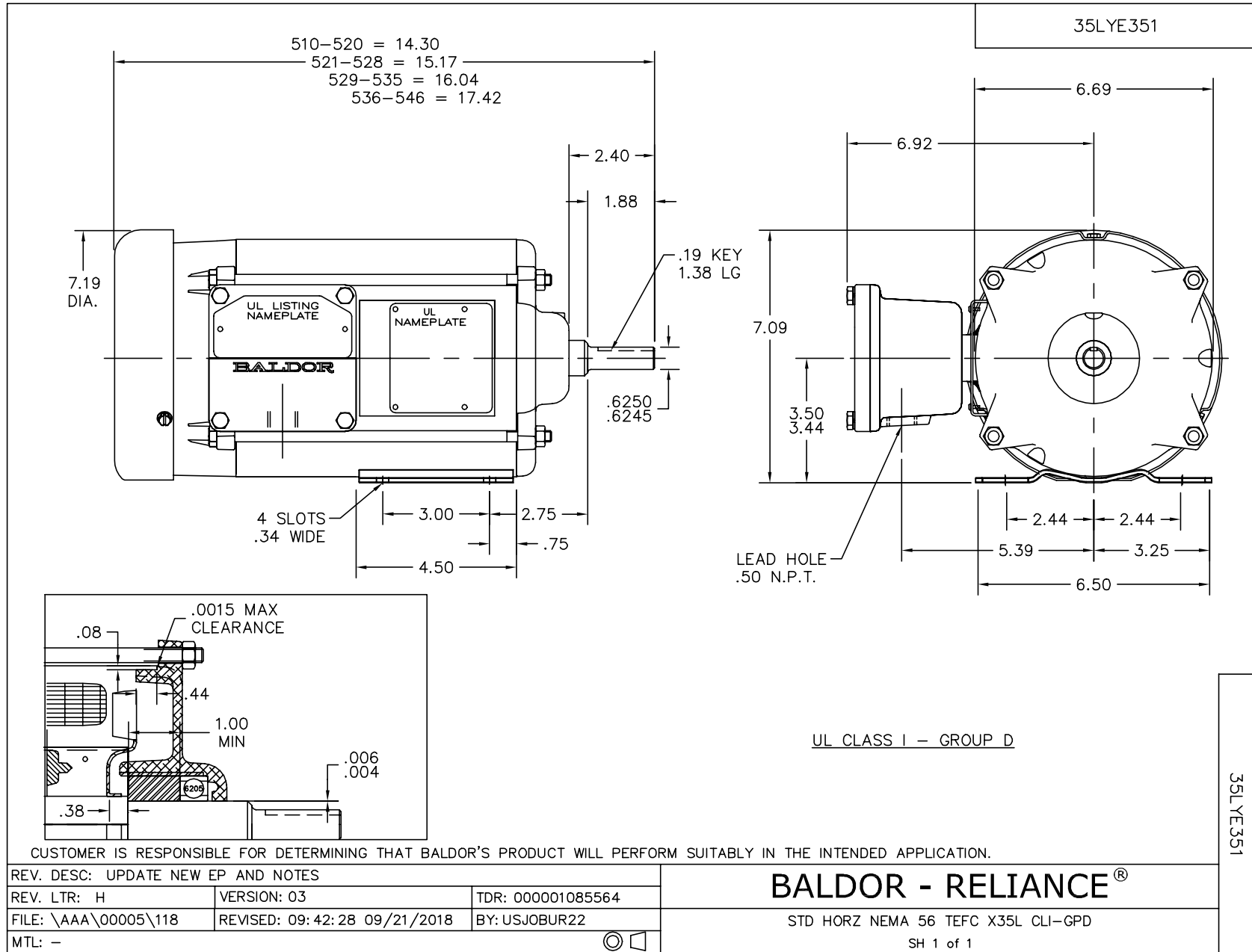
Nameplate Data				115 V, 60 Hz: Low Voltage Connection	
Rated Output (HP)	.75			Full Load Torque	3.42 LB-FT
Volts	115/208-230			Start Configuration	direct on line
Full Load Amps	10.8/5.7-5.4			Breakdown Torque	7.63 LB-FT
R.P.M.	1140			Pull-up Torque	6.93 LB-FT
Hz	60	Phase	1	Locked-rotor Torque	8.78 LB-FT
NEMA Design Code	L	KVA Code	K	Starting Current	56.6 A
Service Factor (S.F.)	1			No-load Current	7.62 A
NEMA Nom. Eff.	68	Power Factor	65	Line-line Res. @ 25°C	0.711 Ω A Ph 2.67 Ω B Ph
Rating - Duty	40C AMB-CONT			Temp. Rise @ Rated Load	70°C
				Locked-rotor Power Factor	88.1
				Rotor inertia	0.237 LB-FT <sup>2</sup>

Load Characteristics 115 V, 60 Hz, 0.75 HP

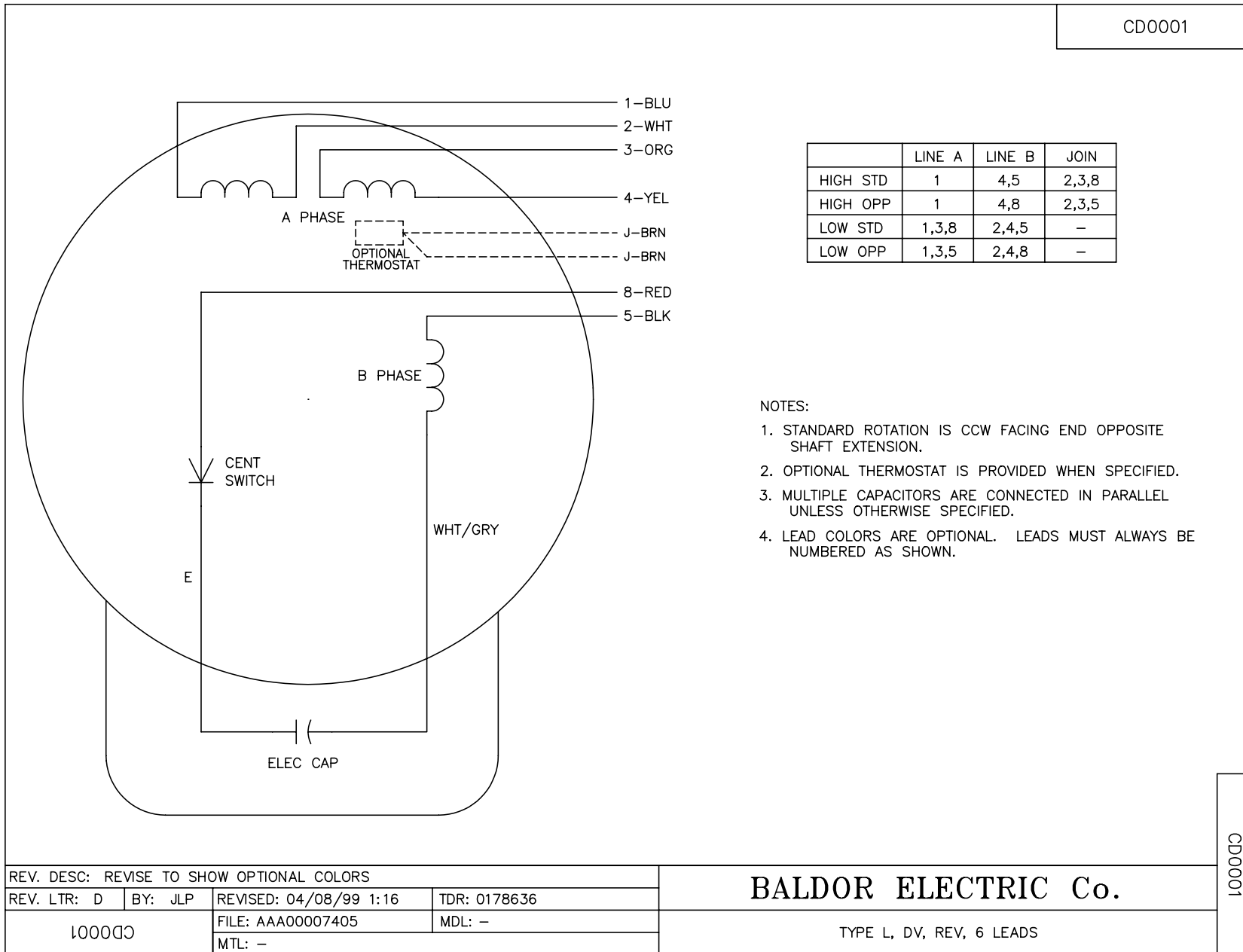
% of Rated Load	25	50	75	100	125	150
Power Factor	31	46	57	66	72	76
Efficiency	49.5	63.1	67.6	68.8	67.2	63.5
Speed	1187	1178	1166	1153	1138	1114
Line amperes	7.88	8.48	9.46	10.8	12.6	15.1

Performance Graph at 115V, 60Hz, 0.75HP Typical performance - Not guaranteed values





CD0001



REV. DESC: REVISE TO SHOW OPTIONAL COLORS			
REV. LTR: D	BY: JLP	REVISED: 04/08/99 1:16	TDR: 0178636
100000		FILE: AAA00007405	MDL: -
		MTL: -	

**BALDOR ELECTRIC Co.**

TYPE L, DV, REV, 6 LEADS

CD0001