

**BALDOR® • RELIANCE** 

**Product Information Packet**

**L5026**

**1HP,1140RPM,1PH,60HZ,184,X3634L,XPFC,F1**

Part Detail							
Revision:	AJ	Status:	PRD/A	Change #:		Proprietary:	No
Type:	AC	Elec. Spec:	36WG0608	CD Diagram:	CD0001	Mfg Plant:	
Mech. Spec:	36N007	Layout:	36LYN007	Poles:	06	Created Date:	
Base:	RG	Eff. Date:	09-10-2015	Leads:	6#16		

Specs			
Catalog Number:	L5026	Insulation Class:	B
Enclosure:	XPFC	Inverter Code:	Not Inverter
Frame:	184	KVA Code:	K
Frame Material:	Steel	Lifting Lugs:	No Lifting Lugs
Output @ Frequency:	1.000 HP @ 60 HZ	Locked Bearing Indicator:	No Locked Bearing
Synchronous Speed @ Frequency:	1200 RPM @ 60 HZ	Motor Lead Quantity/Wire Size:	6 @ 16 AWG
Voltage @ Frequency:	115.0 V @ 60 HZ	Motor Lead Exit:	Ko Box
	208.0 V @ 60 HZ	Motor Lead Termination:	Flying Leads
	230.0 V @ 60 HZ	Motor Type:	3634L
XP Class and Group:	CLI GP D; CLII GP F,G	Mounting Arrangement:	F1
XP Division:	Division I	Power Factor:	67
Agency Approvals:	UL	Product Family:	General Purpose
	CSA	Pulley End Bearing Type:	Ball
Auxillary Box:	No Auxillary Box	Pulley Face Code:	Standard
Auxillary Box Lead Termination:	None	Pulley Shaft Indicator:	Standard
Base Indicator:	Rigid	Rodent Screen:	None
Bearing Grease Type:	Polyrex EM (-20F +300F)	Shaft Extension Location:	Pulley End
Blower:	None	Shaft Ground Indicator:	No Shaft Grounding

<b>Current @ Voltage:</b>	14.000 A @ 115.0 V	<b>Shaft Rotation:</b>	Reversible
	7.000 A @ 230.0 V	<b>Shaft Slinger Indicator:</b>	No Slinger
	7.400 A @ 208.0 V	<b>Speed Code:</b>	Single Speed
<b>Design Code:</b>	L	<b>Motor Standards:</b>	NEMA
<b>Drip Cover:</b>	No Drip Cover	<b>Starting Method:</b>	Direct on line
<b>Duty Rating:</b>	CONT	<b>Thermal Device - Bearing:</b>	NONE (OLD)
<b>Electrically Isolated Bearing:</b>	Not Electrically Isolated	<b>Thermal Device - Winding:</b>	Normally Closed Thermostat
<b>Feedback Device:</b>	NO FEEDBACK	<b>Vibration Sensor Indicator:</b>	No Vibration Sensor
<b>Front Face Code:</b>	Standard	<b>Winding Thermal 1:</b>	None
<b>Front Shaft Indicator:</b>	None	<b>Winding Thermal 2:</b>	None
<b>Heater Indicator:</b>	No Heater	<b>XP Temp Code:</b>	T3C

<b>Nameplate NP1426XPSL</b>	
NO.	[ ] CC [ ]
SER.	[ ]
SPEC.	36N07-608
CAT.NO.	L5026
HP	1 T. CODE T3C
VOLTS	115/208-230
AMPS	14/7.4-7
RPM	1140
HZ	60 PH 1 CL B
SER.F.	1.00 DES L CODE K
RATING	40C AMB-CONT
FRAME	184 NEMA-NOM-EFF 67
USABLE AT 208V	PF 67
BLANK	[ ]

Parts List		
Part Number	Description	Quantity
SA037351	SA 36N07-608	1.000 EA
RA033376	RA 36N07-608	1.000 EA
EC1324A03	ELEC CAP, 324-389 MFD, 125V, 1.81D X 3.	2.000 EA
35CB3001A02SP	EXPL PROOF CONDUIT BOX, 3/4"PIPE TAP LEA	1.000 EA
11XW1032G06	10-32 X .38, TAPTITE II, HEX WSHR SLTD U	1.000 EA
HW3001B01	BRASS CUP WASHER, FOR #10 SCREW	1.000 EA
36EP3700A01	FR ENDPLATE, MACH	1.000 EA
HW4500A19	1/4-28X1/4 SLOTTED PLUG F/S	2.000 EA
13XF0832A08	8-32 X.50 PAN HD,SLTD, TYPE F SCREW, ZIN	2.000 EA
HW5100A05	WVY WSHR F/205 & 304 BRGS	1.000 EA
36EP3701A01	PU ENDPLATE, MACH	1.000 EA
HW4500A19	1/4-28X1/4 SLOTTED PLUG F/S	2.000 EA
XY3816A12	3/8-16 FINISHED NUT	4.000 EA
36FH4009A02	FAN COVER FOR VM7042T,PRIMER	1.000 EA
51XW1032A06	10-32 X .38, TAPTITE II, HEX WSHR SLTD S	3.000 EA
35CB3500A01SP	CONDUIT BOX LID, MACH	1.000 EA
51XN2520A16	SCREW, HEX WS SLT, ZN, 1/4-20 X 1.00	4.000 EA
HW2501D13	KEY, 3/16 SQ X 1.375	1.000 EA
NP0018F	ALUM UL XP CONDUIT BOX NAMEPLATE	1.000 EA
HA7000A01	KEY RETAINER 7/8" DIA SHAFT	1.000 EA
85XU0407S04	4X1/4 U DRIVE PIN STAINLESS	6.000 EA
HA6003A52	CLAMP, CAPACITOR, WHITE ZINC PLATED	2.000 EA
51XW0832A07	8-32 X .44, TAPTITE II, HEX WSHR SLTD SE	2.000 EA
MJ1000A02	GREASE, POLYREX EM EXXON (USe 4824-15A)	0.050 LB

<b>Parts List (continued)</b>		
<b>Part Number</b>	<b>Description</b>	<b>Quantity</b>
36FN3000A01SP	EXFN, PLASTIC, 7.00 OD, .912 ID	1.000 EA
51XB1214A16	12-14X1.00 HXWSSLD SERTYB	1.000 EA
MG1025G29	WILKOFASST, 789.229, DARK CHARCOAL GRAY	0.022 GA
HA3105A06	THRUBOLT- 3/8-16 X 10.500 X	4.000 EA
SP5172A39	37 TYPE L TORQ STAT SWITCH LEAD ASSEMBLY	1.000 EA
LB1119N	WARNING LABEL	1.000 EA
LC0081	CONNECTION LABEL X	1.000 EA
NP1426XPSL	SS XP UL CSA CC CL-I GP-D CL-II GP-F&G	1.000 EA
36PA1001	PKG GRP, PRINT PK1017A06	1.000 EA
MN416A01	TAG-INSTAL-MAINT no wire (1200/bx) 5/18	1.000 EA

**AC Induction Motor Performance Data**

Record # 10489 - Typical performance - not guaranteed values

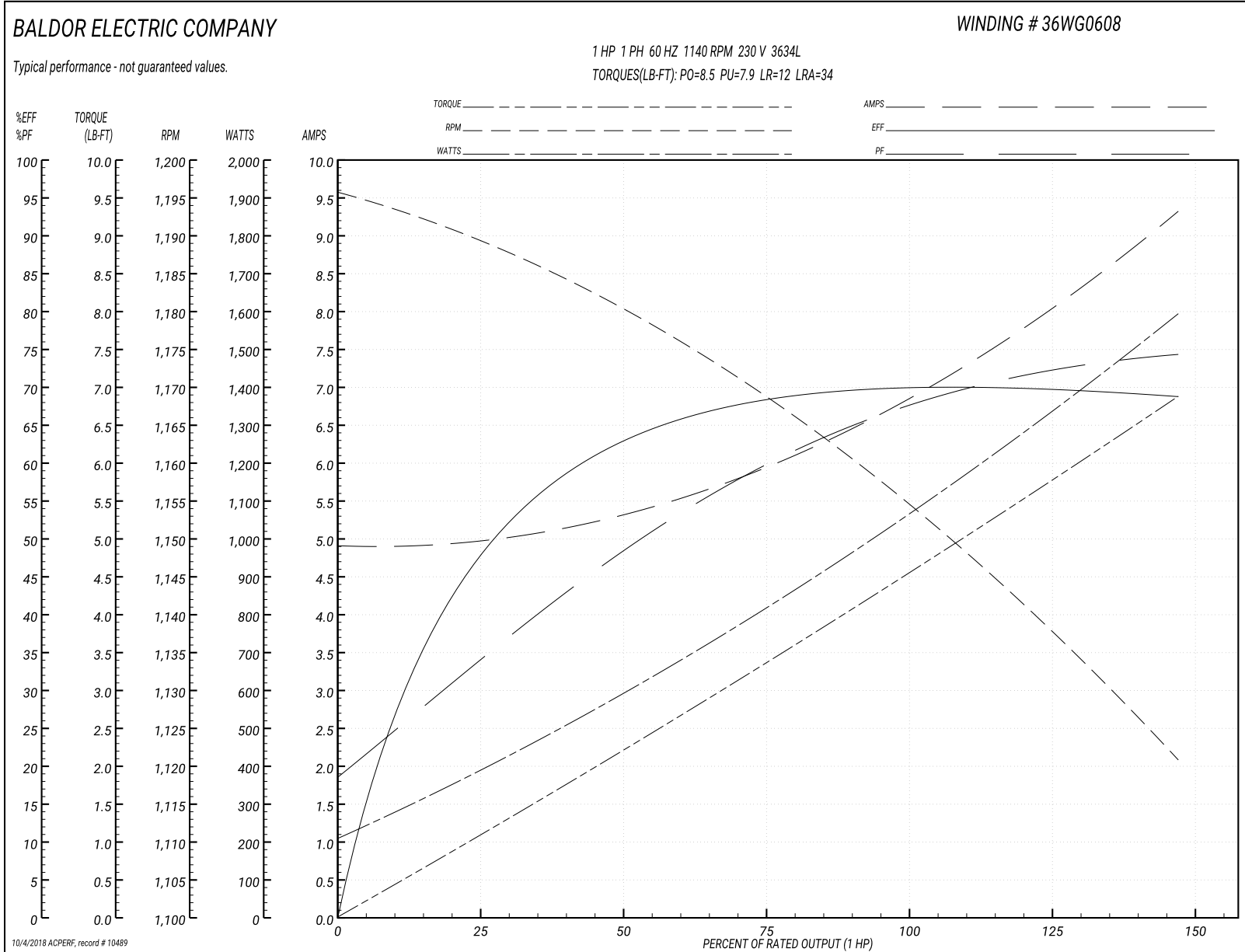
<b>Winding:</b> 36WG0608-R005	<b>Type:</b> 3634L	<b>Enclosure:</b> XPFC
-------------------------------	--------------------	------------------------

Nameplate Data				230 V, 60 Hz: High Voltage Connection	
Rated Output (HP)	1			Full Load Torque	4.6 LB-FT
Volts	115/208-230			Start Configuration	direct on line
Full Load Amps	14/7.4-7			Breakdown Torque	8.5 LB-FT
R.P.M.	1140			Pull-up Torque	7.9 LB-FT
Hz	60	Phase	1	Locked-rotor Torque	12 LB-FT
NEMA Design Code	L	KVA Code	K	Starting Current	34 A
Service Factor (S.F.)	1			No-load Current	4.85 A
NEMA Nom. Eff.	67	Power Factor	67	Line-line Res. @ 25°C	0.502 Ω A Ph 1.74 Ω B Ph
Rating - Duty	40C AMB-CONT			Temp. Rise @ Rated Load	74°C

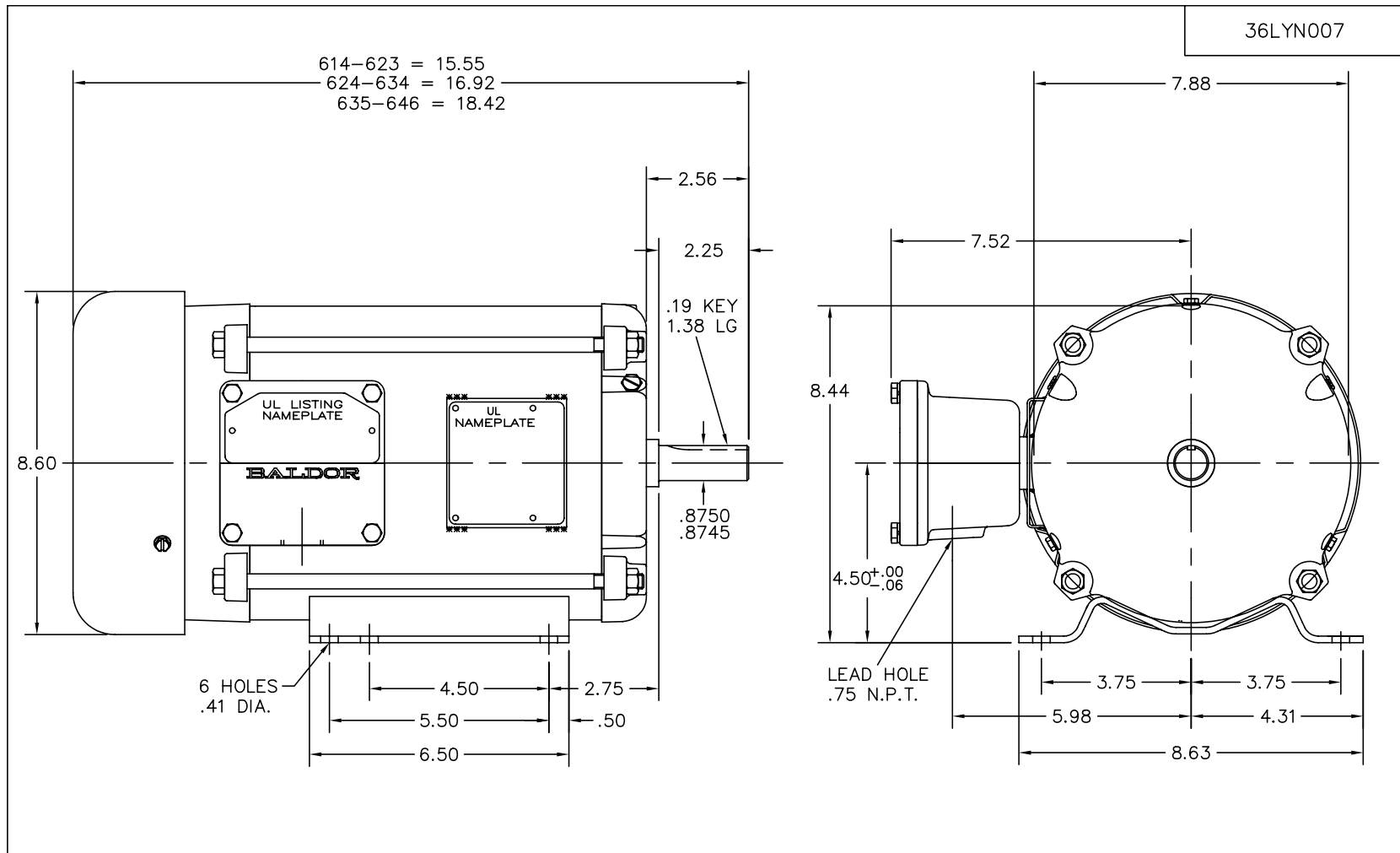
Load Characteristics 230 V, 60 Hz, 1 HP

% of Rated Load	25	50	75	100	125	150
Power Factor	34	48	59	67	73	76
Efficiency	47.8	62.6	68.5	70.6	70.4	68.3
Speed	1188	1178	1168	1155	1140	1119
Line amperes	5.05	5.4	6	6.85	7.95	9.4

Performance Graph at 230V, 60Hz, 1.0HP Typical performance - Not guaranteed values







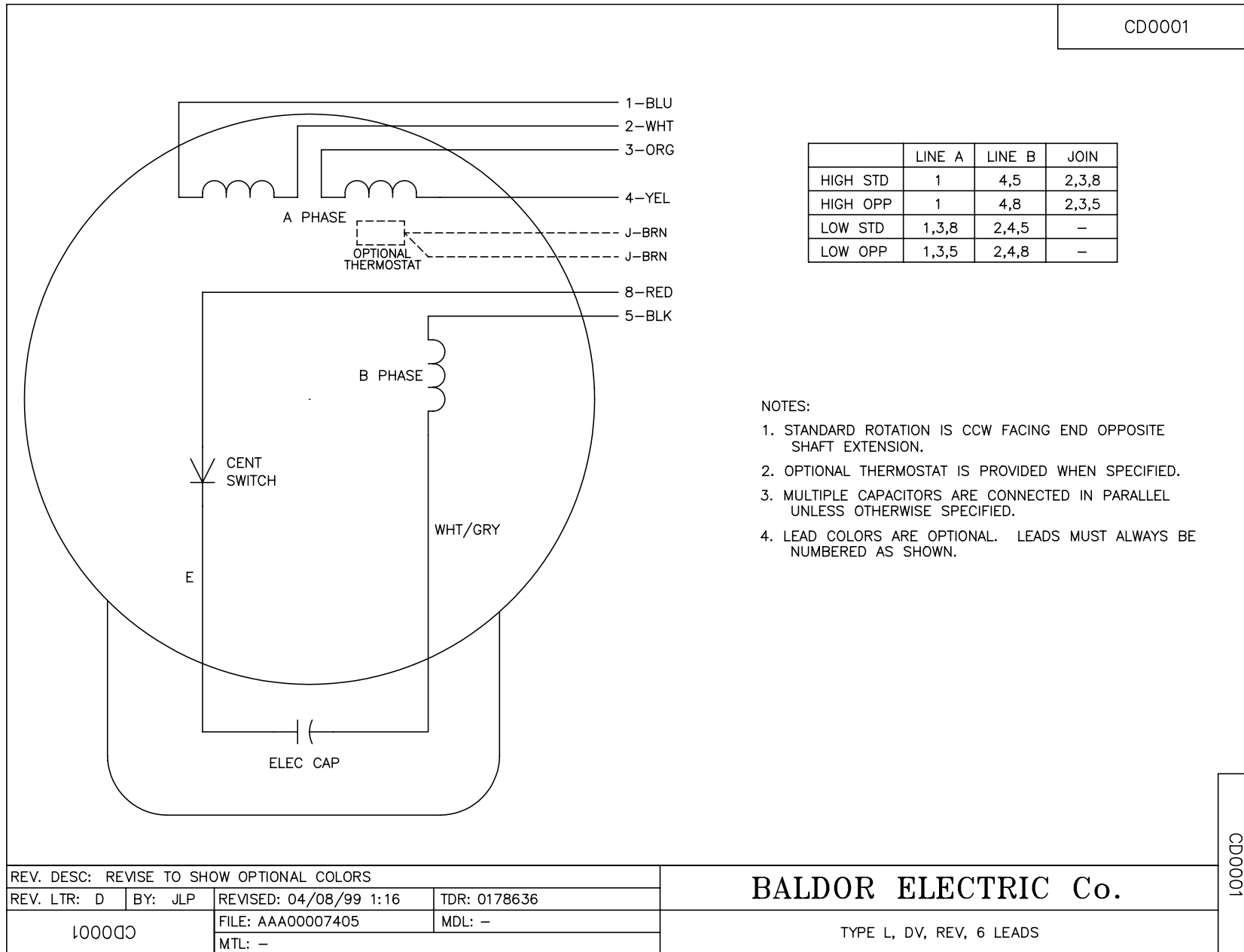
36LYN007

UL CLASS I - GROUP D - CLASS II - GROUPS F & G

CUST. NAME		CUST. P.O.		CERTIFIED BY		MODEL		INSUL		AMB							
H.P.		MTG		TYPE		R.P.M.		VOLTS		ENCL		PHASE		FREQ		FRAME	
REV. DESC: CHG'D FH TO 36FH4009A02												<b>BALDOR ELECTRIC Co.</b>					
REV. LTR: E		BY: JED		REVISED: 06/04/99 2:37				TDR: 0183315									
∠00NΛ79∑				FILE: AAA00004642				MDL: -									
MTL: -				HORZ 182-4 TEFC X36L CL-I,GP D-CL II, GP F&G													

36LYN007

CD0001



NOTES:

1. STANDARD ROTATION IS CCW FACING END OPPOSITE SHAFT EXTENSION.
2. OPTIONAL THERMOSTAT IS PROVIDED WHEN SPECIFIED.
3. MULTIPLE CAPACITORS ARE CONNECTED IN PARALLEL UNLESS OTHERWISE SPECIFIED.
4. LEAD COLORS ARE OPTIONAL. LEADS MUST ALWAYS BE NUMBERED AS SHOWN.

REV. DESC: REVISE TO SHOW OPTIONAL COLORS			
REV. LTR: D	BY: JLP	REVISED: 04/08/99 1:16	TDR: 0178636
100000		FILE: AAA00007405	MDL: -
		MTL: -	

**BALDOR ELECTRIC Co.**

TYPE L, DV, REV, 6 LEADS

CD0001