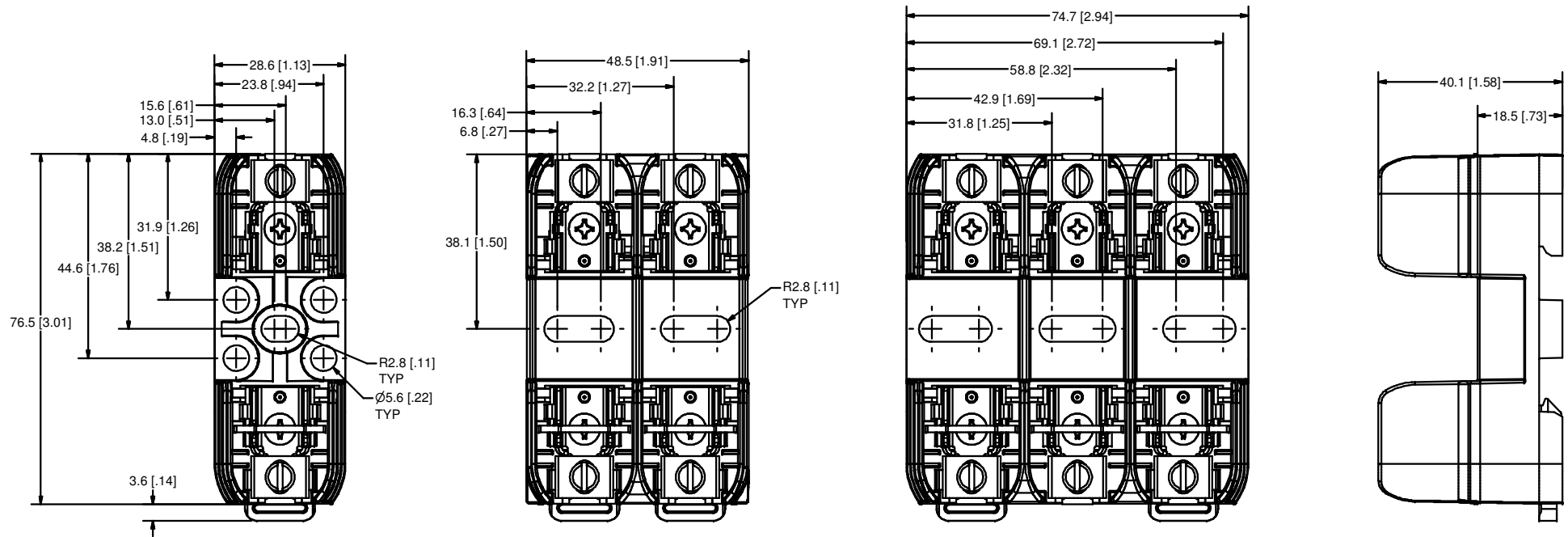


REVISION		DESCRIPTION
REV	DATE	Value
A	12/22/2006	



**SPECIFICATIONS:**

**VOLTAGE RATING:** 250V

**AMPERE RATING:** 30 AMPERES

**INTERRUPT RATING:** 200kA  
300kA Littelfuse Self Certified

**TERMINAL TYPE:** BOX LUG

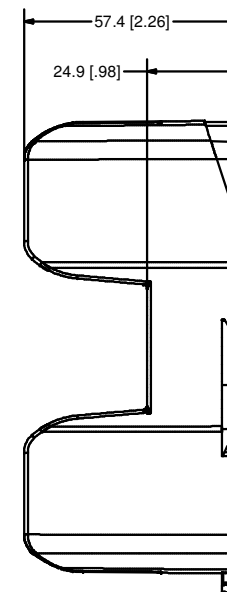
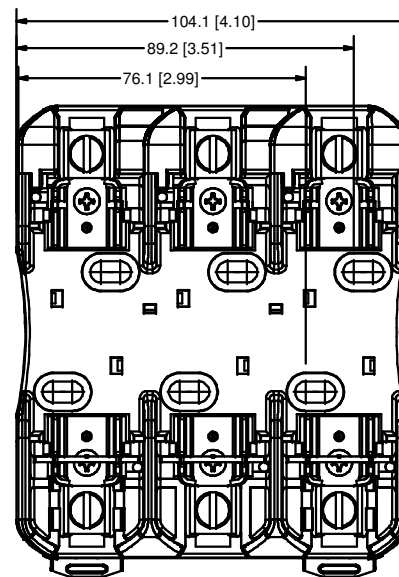
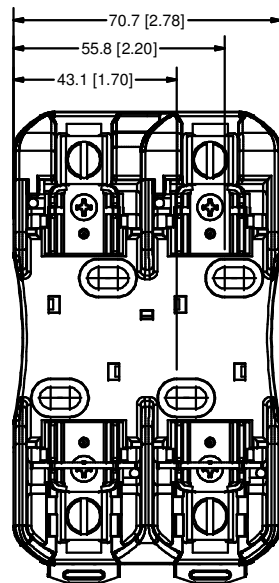
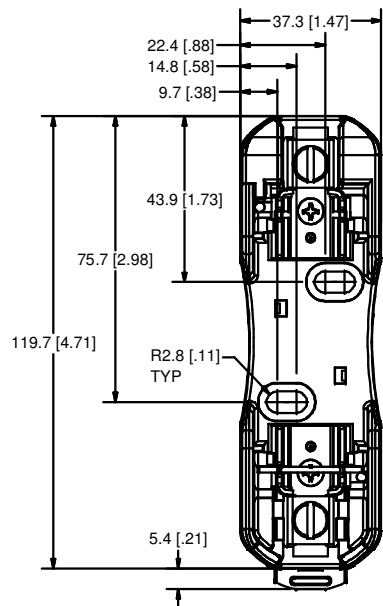
**SUGGESTED TORQUE:** 2.8 N-m (25 IN-LBS)

**WIRE RANGE:** 6-14 AWG Cu ONLY  
SOLID/STRANDED

**APPROVALS:** UL LISTED (FILE NO. E14721)  
CSA CERTIFIED (FILE NO. LR73091)

●	DENOTES CRITICAL CHARACTERISTICS.		
CPK	DENOTES CPK DIMENSIONS, -MINIMUM CPK VALUE		
(ST)	DENOTES A CHARACTERISTIC THAT PROVIDES AN INDICATION OF PROCESS PERFORMANCE. PROCEDURE FOR MEASUREMENT AND TRACKING TO BE DEFINED IN LITTELFUSE INSPECTION INSTRUCTIONS.		
CP	DENOTES CP DIMENSIONS, -MINIMUM CP VALUE MUST BE WITHIN THE DIMENSIONAL LIMITATIONS SHOWN ON DRAWING AND INITIALLY LOCATED TO ALLOW FOR MAXIMUM TOOL LIFE.		
MATL SPEC		FINISH	
DRW M. York	DATE 2/11/2010	SCALE NTS	FINISH GOOD WT GRAMS/PIECE
UNLESS OTHERWISE SPECIFIED, DIMENSIONS ARE IN MILLIMETERS, DIMENSIONS IN BRACKETS [ ] ARE INCHES DIMENSIONING AND DO NOT INCLUDE PLATING. TOLERANCING TO BE INTERPRETED IN ACCORDANCE WITH ANSI Y14.5M-1994			
3RD ANGLE PROJECTION			
TITLE		LFR25030-C OUTLINE	
		REVISION A	DRWG NO. OL-LFR25030
		SHEET 1 OF 1	

REVISION		DESCRIPTION
REV	DATE	Value
A	12/22/2006	



**SPECIFICATIONS:**

**VOLTAGE RATING:** 250V

**AMPERE RATING:** 60 AMPERES

**INTERRUPT RATING:** 200kA  
300kA Littelfuse Self Certified

**TERMINAL TYPE:** BOX LUG

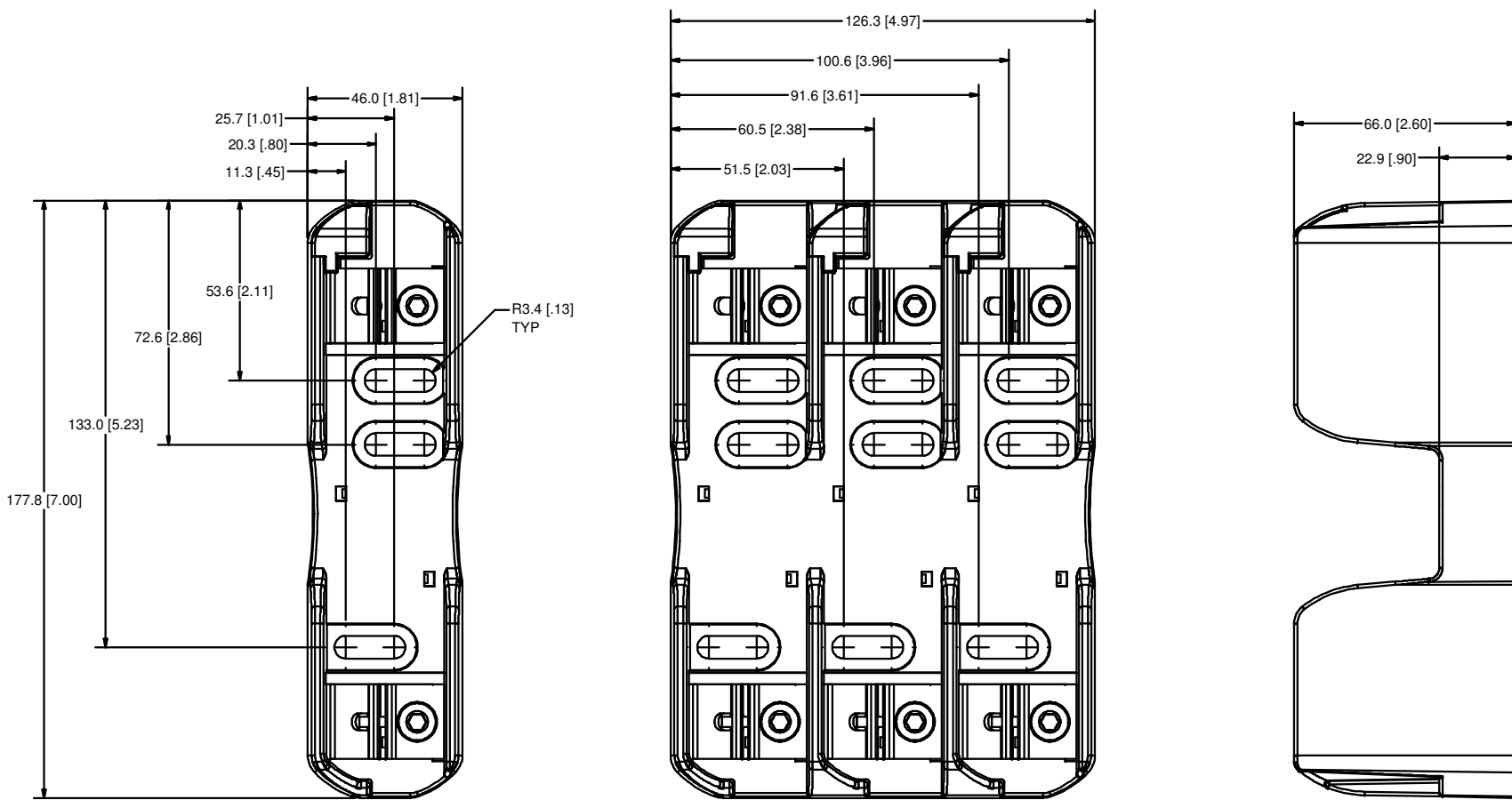
**SUGGESTED TORQUE:** 5.6 N-m (50 IN-LBS) 2-4 AWG  
2.8 N-m (25 IN-LBS) 6-14 AWG

**WIRE RANGE:** 2-14 AWG Cu/Al  
SOLID/STRANDED

**APPROVALS:** UL LISTED (FILE NO. E14721)  
CSA CERTIFIED (FILE NO. LR73091)

●	DENOTES CRITICAL CHARACTERISTICS.		
CPK	DENOTES CPK DIMENSIONS, -MINIMUM CPK VALUE		
(ST)	DENOTES A CHARACTERISTIC THAT PROVIDES AN INDICATION OF PROCESS PERFORMANCE. PROCEDURE FOR MEASUREMENT AND TRACKING TO BE DEFINED IN LITTELFUSE INSPECTION INSTRUCTIONS.		
CP	DENOTES CP DIMENSIONS, -MINIMUM CP VALUE MUST BE WITHIN THE DIMENSIONAL LIMITATIONS SHOWN ON DRAWING AND INITIALLY LOCATED TO ALLOW FOR MAXIMUM TOOL LIFE.		
MATL SPEC		FINISH	
DRW M. York	DATE 2/12/2010	SCALE NTS	FINISH GOOD WT GRAMS/PIECE
UNLESS OTHERWISE SPECIFIED, DIMENSIONS ARE IN MILLIMETERS, DIMENSIONS IN BRACKETS [ ] ARE INCHES DIMENSIONING AND DO NOT INCLUDE PLATING. TOLERANCING TO BE INTERPRETED IN ACCORDANCE WITH ANSI Y14.5M-1994			
3RD ANGLE PROJECTION			
TITLE		LFR25060 OUTLINE	
		REVISION A	DRWG NO. OL-LFR25060
		SHEET 1 OF 1 SERIES	

REVISION		DESCRIPTION
REV	DATE	Value
A	12/22/2006	



**SPECIFICATIONS:**

**VOLTAGE RATING:** 250V

**AMPERE RATING:** 100 AMPERES

**INTERRUPT RATING:** 200kA  
300kA Littelfuse Self Certified

**TERMINAL TYPE:** BOX LUG

**SUGGESTED TORQUE:** 13.6 N-m (120 IN-LBS) 2/0-6 AWG  
4.5 N-m (40 IN-LBS) 8 AWG  
4.0 N-m (35 IN-LBS) 10-14 AWG

**WIRE RANGE:** 2/0-14 AWG Cu/Al  
SOLID/STRANDED

**APPROVALS:** UL LISTED (FILE NO. E14721)  
CSA CERTIFIED (FILE NO. LR73091)

●	DENOTES CRITICAL CHARACTERISTICS.
CPK	DENOTES CPK DIMENSIONS, -MINIMUM CPK VALUE
(ST)	DENOTES A CHARACTERISTIC THAT PROVIDES AN INDICATION OF PROCESS PERFORMANCE. PROCEDURE FOR MEASUREMENT AND TRACKING TO BE DEFINED IN LITTELFUSE INSPECTION INSTRUCTIONS.
CP	DENOTES CP DIMENSIONS, -MINIMUM CP VALUE MUST BE WITHIN THE DIMENSIONAL LIMITATIONS SHOWN ON DRAWING AND INITIALLY LOCATED TO ALLOW FOR MAXIMUM TOOL LIFE.

MATERIAL SPECIFICATION		FINISH	
DRW	M. York	DATE	2/12/2010
SCALE	NTS	FINISH GOOD WT	GRAMS/PIECE

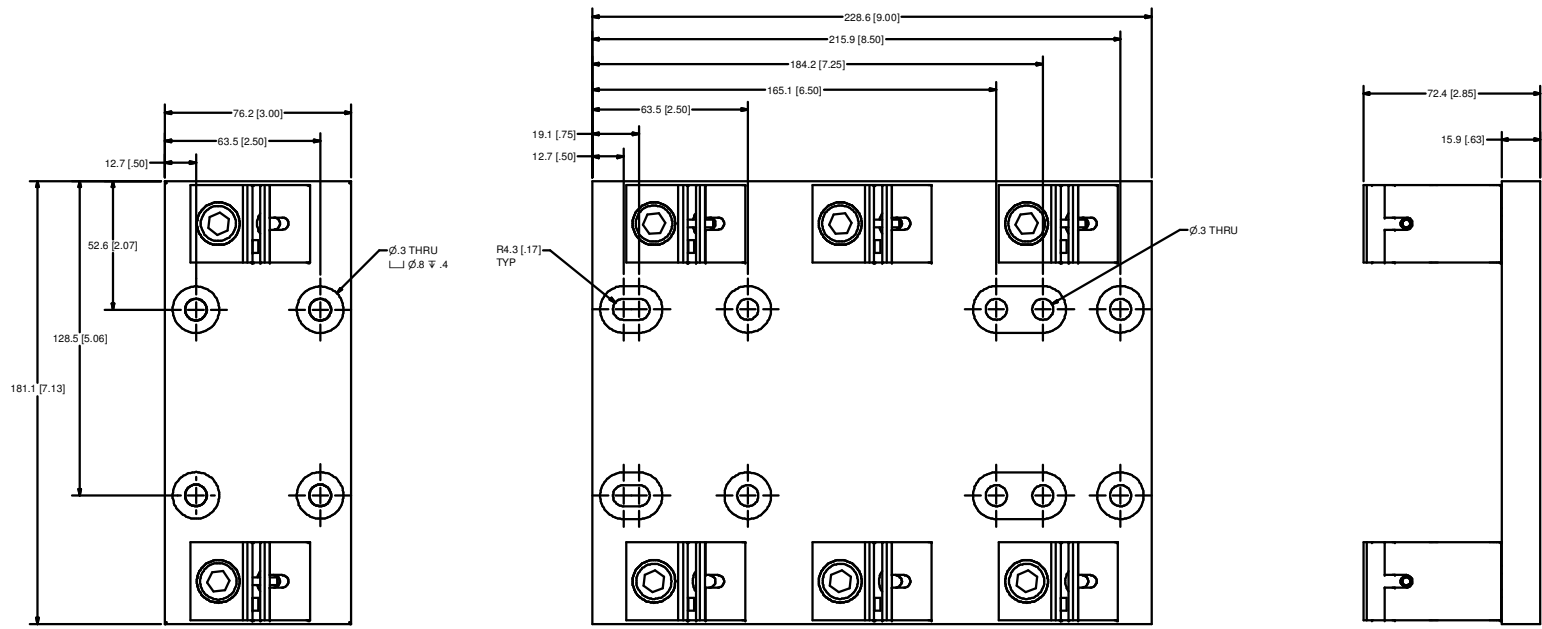
UNLESS OTHERWISE SPECIFIED, DIMENSIONS ARE IN MILLIMETERS, DIMENSIONS IN BRACKETS [ ] ARE INCHES DIMENSIONING AND DO NOT INCLUDE PLATING. TOLERANCING TO BE INTERPRETED IN ACCORDANCE WITH ANSI Y14.5M-1994

3RD ANGLE PROJECTION	
----------------------	--

**TITLE** LFR25100 OUTLINE

<b>Littelfuse</b> DES PLAINES, ILLINOIS 60016	<b>REVISION</b> A	<b>DRWG NO.</b> OL-LFR25100	<b>SHEET 1 OF 1</b> SERIES
--	----------------------	--------------------------------	-------------------------------

REV		DATE	DESCRIPTION
A	1	10/2/2005	VAL

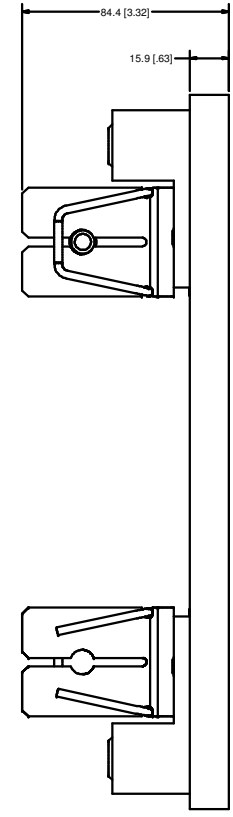
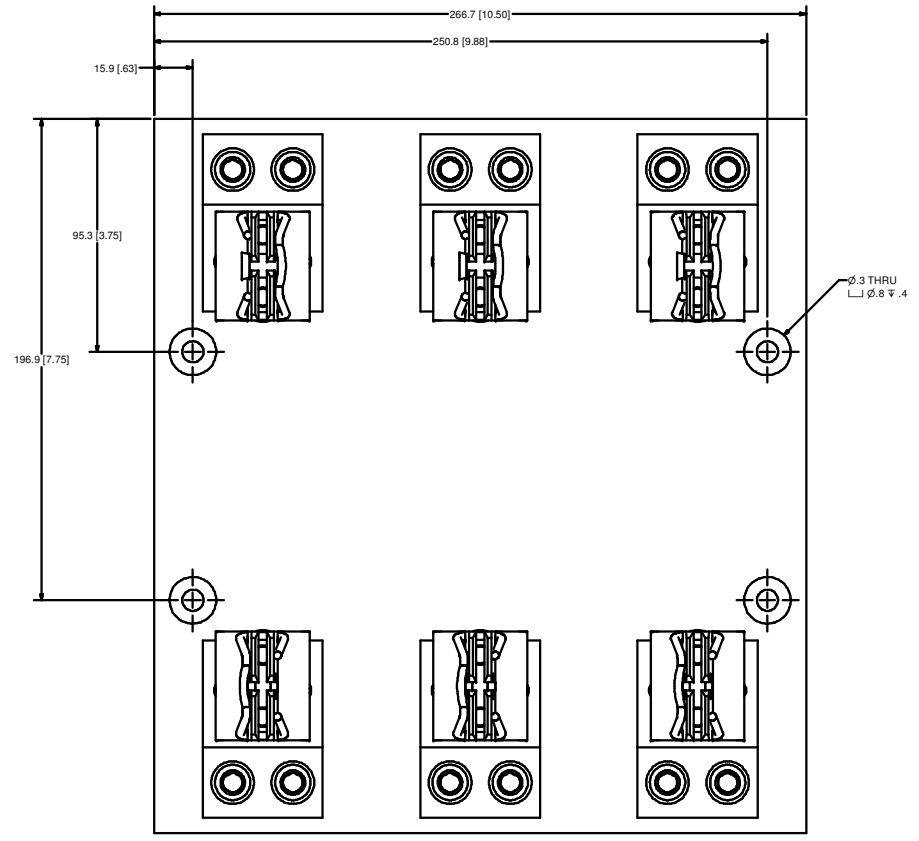
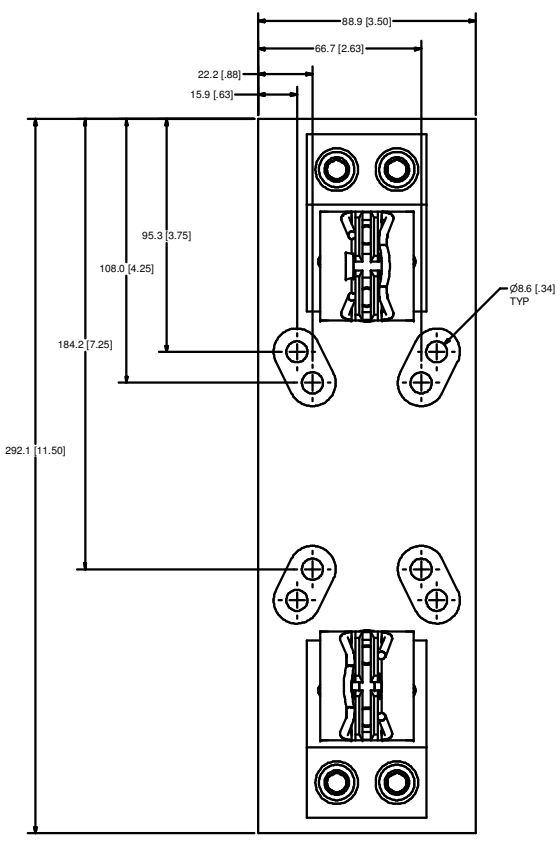


**SPECIFICATIONS:**

- VOLTAGE RATING:** 250V
- AMPERE RATING:** 200 AMPERES
- INTERRUPT RATING:** 200kA  
300kA Littelfuse Self Certified
- TERMINAL TYPE:** BOX LUG
- SUGGESTED TORQUE:** 31.1 N-m (275 IN-LBS)
- WIRE RANGE:** 250kcmil-6 AWG Cu/Al  
SOLID/STRAINED
- APPROVALS:** UL LISTED (FILE NO. E14721)  
CSA CERTIFIED (FILE NO. LR73091)

●	DENOTES CRITICAL CHARACTERISTICS.		
CPK	DENOTES CPK DIMENSIONS, MINIMUM CPK VALUE		
Ⓢ	DENOTES A CHARACTERISTIC THAT PROVIDES AN INDICATION OF PROCESS PERFORMANCE. PROCEDURE FOR MEASUREMENT AND TRACKING TO BE DEFINED IN LITTELFUSE INSPECTOR INSTRUCTIONS.		
CP	DENOTES CP DIMENSIONS, MINIMUM CP VALUE MUST BE WITHIN THE DIMENSIONAL LIMITATIONS SHOWN ON DRAWING AND INITIALLY LOCATED TO ALLOW FOR MAXIMUM TOOL LIFE.		
PAI: SPEC	FINISH		
DRW	DATE	SCALE	FINISH GOOD WT
M: 100%	3/12/2010	1:1	0.0000
UNLESS OTHERWISE SPECIFIED, DIMENSIONS ARE IN MILLIMETERS. DIMENSIONS IN BRACKETS [ ] ARE INCHES DIMENSIONING AND DO NOT INCLUDE PLATING. TOLERANCING TO BE INTERPRETED IN ACCORDANCE WITH ANSI Y14.5M-1994.			
JOB NO.	TITLE		
000000	LFR25200 OUTLINE		
	REVISION	DRWG NO.	SHEET 1 OF 1
	A	OL-LFR25200 Series	

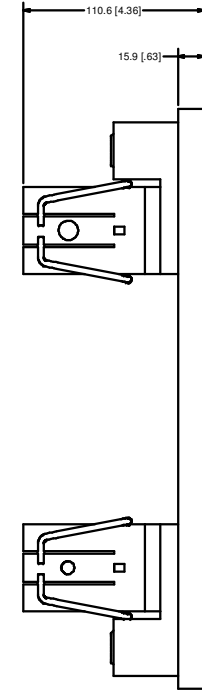
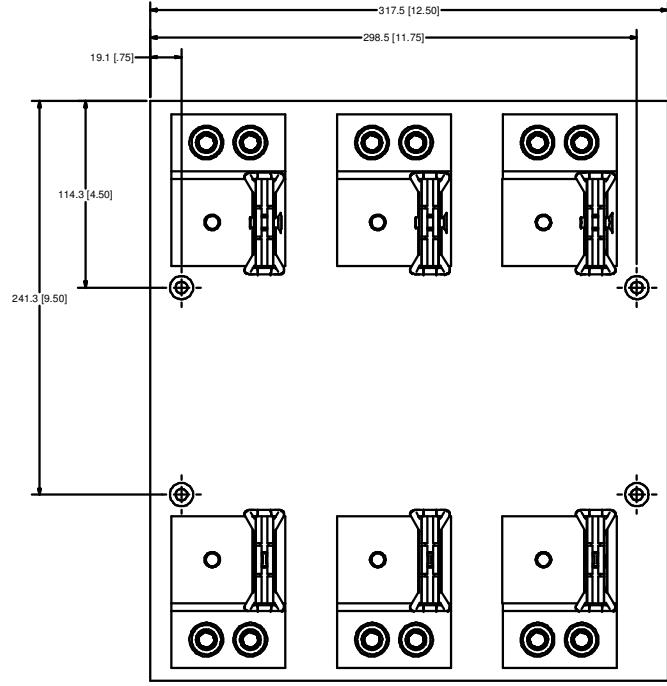
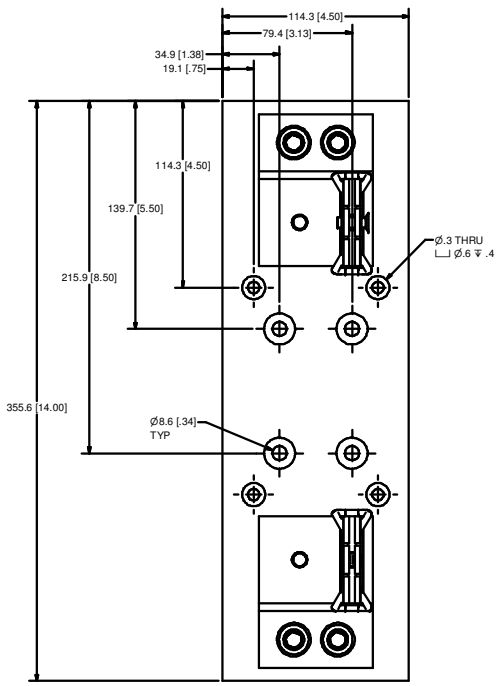
REVISION		DESCRIPTION
REV	DATE	DESCRIPTION
A	10/2/2005	Value



**SPECIFICATIONS:**  
**VOLTAGE RATING:** 250 V  
**AMPERE RATING:** 400 AMPERES  
**INTERRUPT RATING:** 200kA  
 300kA Littelfuse Self Certified  
**TERMINAL TYPE:** BOX LUG  
**SUGGESTED TORQUE:** 31.1 N-m (275 IN-LBS)  
**WIRE RANGE:** 350kcmil-1/0 Cu/Al  
 SOLID-STRANDED  
**APPROVALS:** UL LISTED (FILE NO. E14721)  
 CSA CERTIFIED (FILE NO. LR73091)

●	DENOTES CRITICAL CHARACTERISTICS.		
CPK	DENOTES CPK DIMENSIONS, MINIMUM CPK VALUE		
Ⓢ	DENOTES A CHARACTERISTIC THAT PROVIDES AN INDICATION OF PROCESS PERFORMANCE. PROCEDURE FOR MEASUREMENT AND TRACKING TO BE DEFINED IN LITTELFUSE INSPECTOR INSTRUCTIONS.		
CP	DENOTES CP DIMENSIONS. MINIMUM CP VALUE MUST BE WITHIN THE DIMENSIONAL LIMITATIONS SHOWN ON DRAWING AND INITIALLY LOCATED TO ALLOW FOR MAXIMUM TOOL LIFE.		
PAI: SPEC	FINISH		
DRW	DATE	SCALE	FINISH GOOD WT
14-100	2/12/2010	N/A	0.0000
UNLESS OTHERWISE SPECIFIED, DIMENSIONS ARE IN MILLIMETERS. DIMENSIONS IN BRACKETS [ ] ARE INCHES DIMENSIONING AND DO NOT INCLUDE PLATING. TOLERANCING TO BE INTERPRETED IN ACCORDANCE WITH ANSI Y14.5M-1994.			
JOB NO.	TITLE		
000000	LFR25400 OUTLINE		
Littelfuse MEMPHIS, IL 60089-8006		REVISION	DWG NO. SHEET 1 OF 1
A		OL-LFR25400 Series	

REV	DATE	REVISION	DESCRIPTION
A	10/2/2005		Value

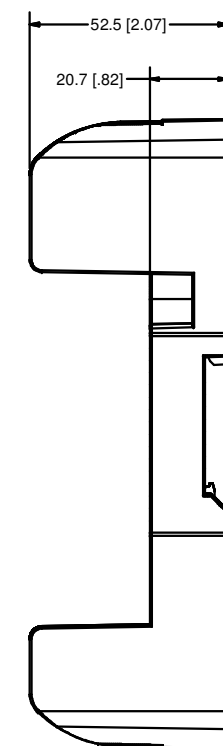
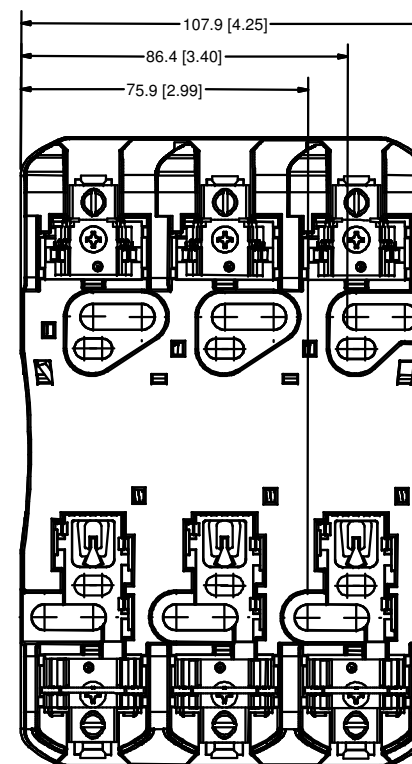
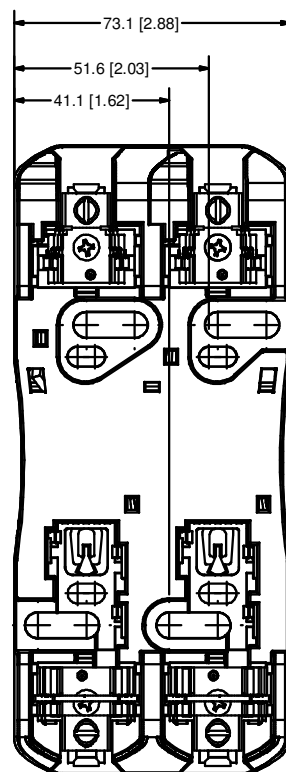
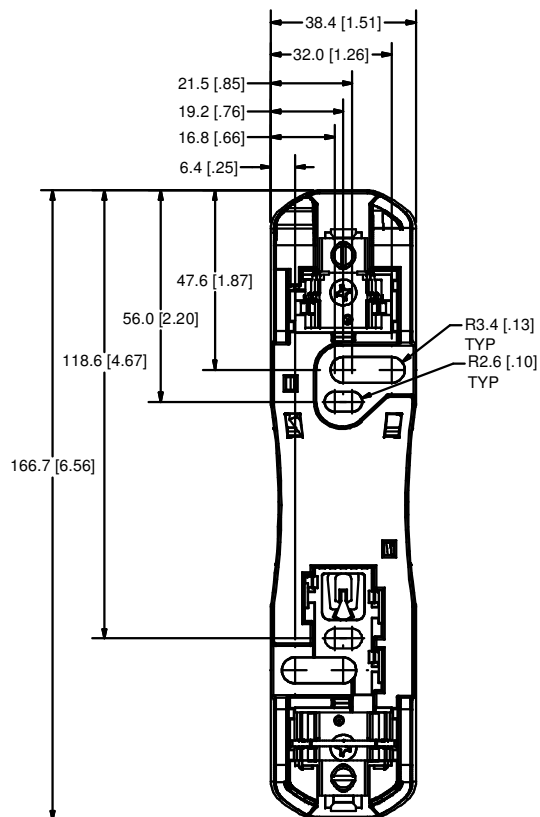


**SPECIFICATIONS:**

- VOLTAGE RATING:** 250V
- AMPERE RATING:** 600 AMPERES
- INTERRUPT RATING:** 200kA  
300kA Littelfuse Self Certified
- TERMINAL TYPE:** BOX LUG
- SUGGESTED TORQUE:** 42.4 N-m (375 IN-LBS)
- WIRE RANGE:** 500kcmil-4 AWG Cu/Al  
SOLID/STRANDED
- APPROVALS:** UL LISTED (FILE NO. E14721)  
CSA CERTIFIED (FILE NO. LR73091)

●	DENOTES CRITICAL CHARACTERISTICS.		
CPK	DENOTES CPK DIMENSIONS, MINIMUM CPK VALUE		
Ⓢ	DENOTES A CHARACTERISTIC THAT PROVIDES AN INDICATION OF PROCESS PERFORMANCE. PROCEDURE FOR MEASUREMENT AND TRACKING TO BE DEFINED IN LITTELFUSE INSPECTOR INSTRUCTIONS.		
CP	DENOTES CP DIMENSIONS, MINIMUM CP VALUE MUST BE WITHIN THE DIMENSIONAL LIMITATIONS SHOWN ON DRAWING AND INITIALLY LOCATED TO ALLOW FOR MAXIMUM TOOL LIFE.		
PAI: SPEC	FINISH		
DRW	DATE	SCALE	FINISH GOOD WT
IN: 1/8"	2/12/2010	1:1	0.0000
UNLESS OTHERWISE SPECIFIED, DIMENSIONS ARE IN MILLIMETERS. DIMENSIONS IN BRACKETS [ ] ARE INCHES DIMENSIONING AND DO NOT INCLUDE PLATING. TOLERANCING TO BE INTERPRETED IN ACCORDANCE WITH ANSI Y14.5M-1994.			
JOB FILED	LITTELFUSE		
TITLE	LFR25600 OUTLINE		
	REVISION	DRWG NO.	SHEET 1 OF 1
A	OL-LFR25600 Series		

REVISION		DESCRIPTION
REV	DATE	Value
A	12/22/2006	



**SPECIFICATIONS:**

**VOLTAGE RATING:** 600V

**AMPERE RATING:** 30 AMPERES

**INTERRUPT RATING:** 200kA  
300kA Littelfuse Self Certified

**TERMINAL TYPE:** BOX LUG

**SUGGESTED TORQUE:** 2.8 N-m (25 IN-LBS)

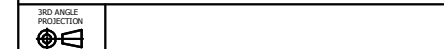
**WIRE RANGE:** 6-14 AWG Cu ONLY  
SOLID/STRANDED

**APPROVALS:** UL LISTED (FILE NO. E14721)  
CSA CERTIFIED (FILE NO. LR73091)

●	DENOTES CRITICAL CHARACTERISTICS.
CPK	DENOTES CPK DIMENSIONS, -MINIMUM CPK VALUE
(ST)	DENOTES A CHARACTERISTIC THAT PROVIDES AN INDICATION OF PROCESS PERFORMANCE. PROCEDURE FOR MEASUREMENT AND TRACKING TO BE DEFINED IN LITTELFUSE INSPECTION INSTRUCTIONS.
CP	DENOTES CP DIMENSIONS, -MINIMUM CP VALUE MUST BE WITHIN THE DIMENSIONAL LIMITATIONS SHOWN ON DRAWING AND INITIALLY LOCATED TO ALLOW FOR MAXIMUM TOOL LIFE.

MATL SPEC	FINISH		
DRW M. York	DATE 2/17/2010	SCALE NTS	FINISH GOOD WT GRAMS/PIECE

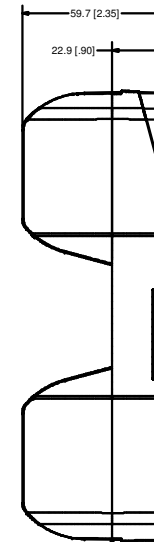
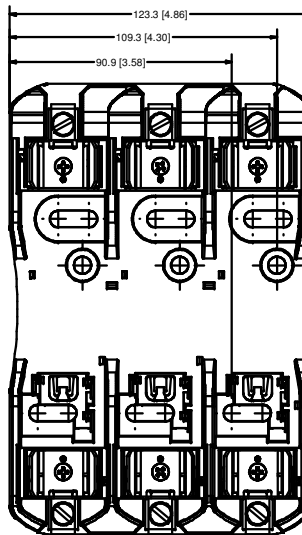
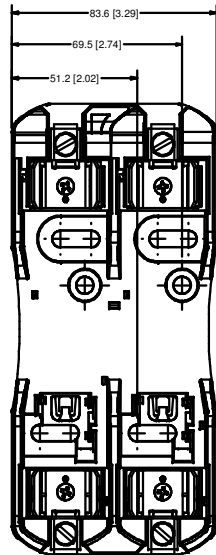
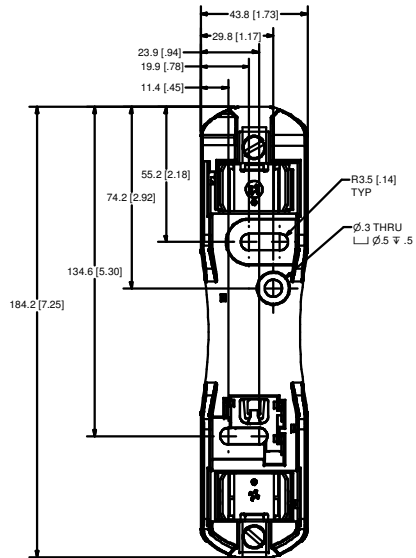
UNLESS OTHERWISE SPECIFIED, DIMENSIONS ARE IN MILLIMETERS, DIMENSIONS IN BRACKETS [ ] ARE INCHES DIMENSIONING AND DO NOT INCLUDE PLATING. TOLERANCING TO BE INTERPRETED IN ACCORDANCE WITH ANSI Y14.5M-1994



TITLE LFR60030-C OUTLINE

<b>Littelfuse</b> DES PLAINES, ILLINOIS 60016	REVISION A	DRWG NO. OL-LFR60030-CID	SHEET 1 OF 1 SERIES
--	---------------	-----------------------------	------------------------

REV	DATE	REVISION	DESCRIPTION
A	10/2/2005		Value



**SPECIFICATIONS:**

**VOLTAGE RATING:** 600V

**AMPERE RATING:** 60 AMPERES

**INTERRUPT RATING:** 200kA  
300kA Littelfuse Self Certified

**TERMINAL TYPE:** BOX LUG

**SUGGESTED TORQUE:** 5.6 N-m (50 IN-LBS) 2-4 AWG  
2.8 N-m (25 IN-LBS) 6-14 AWG

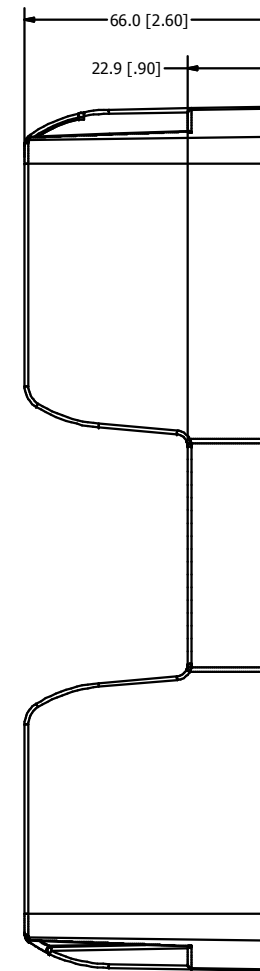
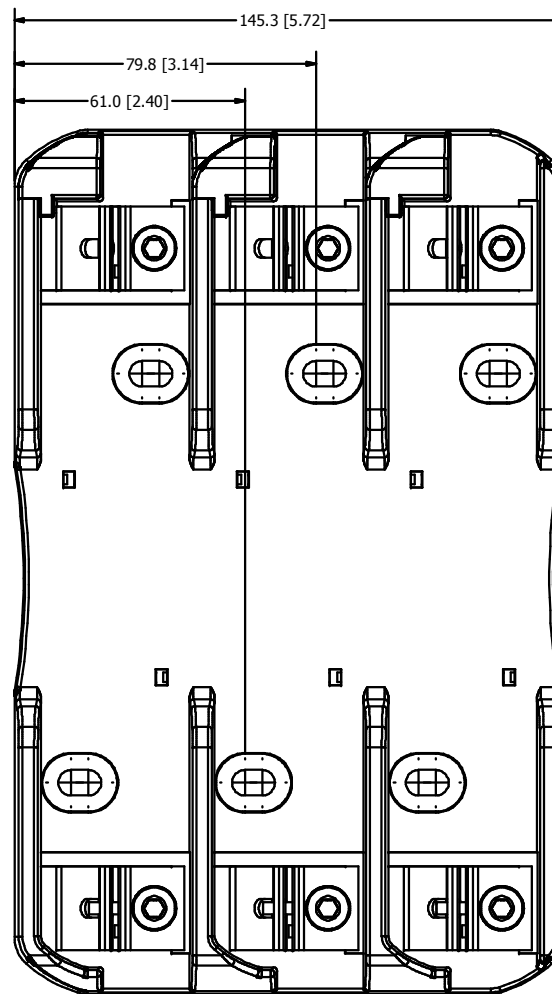
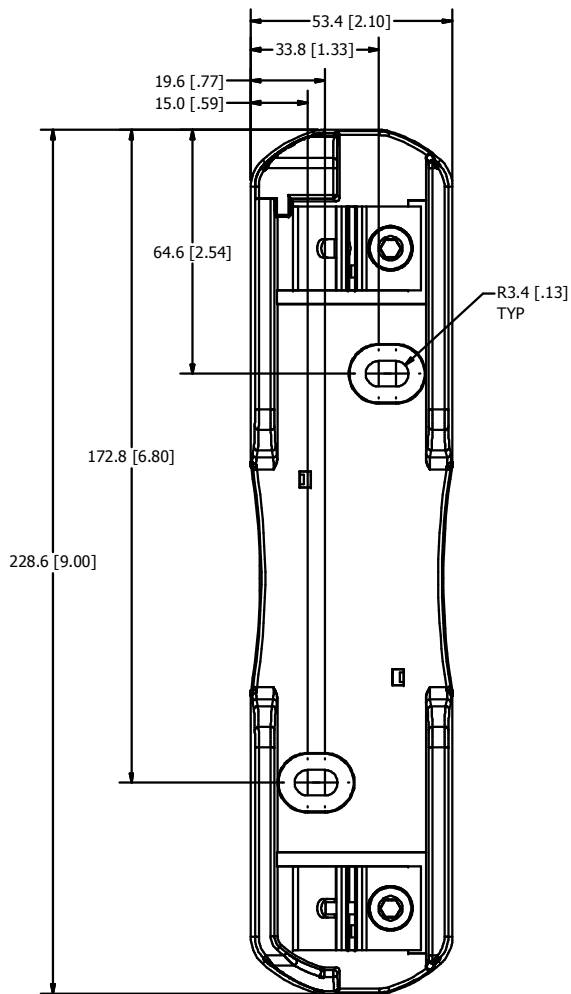
**WIRE RANGE:** 2-14 AWG Cu/Al  
SOLID/STRANDED

**APPROVALS:** UL LISTED (FILE NO. E14721)  
CSA CERTIFIED (FILE NO. LR73091)

●	DENOTES CRITICAL CHARACTERISTICS.		
CPK	DENOTES CPK DIMENSIONS. MINIMUM CPK VALUE		
⊕	DENOTES A CHARACTERISTIC THAT PROVIDES AN INDICATION OF PROCESS PERFORMANCE. PROCEDURE FOR MEASUREMENT AND TRACKING TO BE DEFINED IN LITTELFUSE INSPECTOR INSTRUCTIONS.		
CP	DENOTES CP DIMENSIONS. MINIMUM CP VALUE MUST BE WITHIN THE DIMENSIONAL LIMITATIONS SHOWN OR DRAWING AND INITIALLY LOCATED TO ALLOW FOR MAXIMUM TOOL LIFE.		
PAI: SPEC	FINISH		
DRW	DATE	SCALE	FINISH GOOD WT
IN: 1000	12/23/2010	1:1	0.0000
UNLESS OTHERWISE SPECIFIED, DIMENSIONS ARE IN MILLIMETERS. DIMENSIONS IN BRACKETS [ ] ARE INCHES DIMENSIONING AND DO NOT INCLUDE PLATING. TOLERANCING TO BE INTERPRETED IN ACCORDANCE WITH ANSI Y14.5M-1994.			
JOB NAME	TITLE		
REF: 60060	LFR60060 OUTLINE		
		REVISION	DRWG NO. SHEET 1 OF 1
		A	OL-LFR60060 Series



REVISION		DESCRIPTION
REV	DATE	Value
A	12/22/2006	



**SPECIFICATIONS:**

**VOLTAGE RATING:** 600V

**AMPERE RATING:** 100 AMPERES

**INTERRUPT RATING:** 200kA  
300kA Littelfuse Self Certified

**TERMINAL TYPE:** BOX LUG

**SUGGESTED TORQUE:** 13.6 N-m (120 IN-LBS) 2/0-6 AWG  
4.5 N-m (40 IN-LBS) 8 AWG  
4.0 N-m (35 IN-LBS) 10-14 AWG

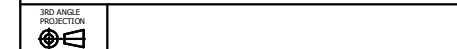
**WIRE RANGE:** 2/0-14 AWG Cu/Al  
SOLID/STRANDED

**APPROVALS:** UL LISTED (FILE NO. E14721)  
CSA CERTIFIED (FILE NO. LR73091)

●	DENOTES CRITICAL CHARACTERISTICS.
CPK	DENOTES CPK DIMENSIONS, -MINIMUM CPK VALUE
(ST)	DENOTES A CHARACTERISTIC THAT PROVIDES AN INDICATION OF PROCESS PERFORMANCE. PROCEDURE FOR MEASUREMENT AND TRACKING TO BE DEFINED IN LITTELFUSE INSPECTION INSTRUCTIONS.
CP	DENOTES CP DIMENSIONS, -MINIMUM CP VALUE MUST BE WITHIN THE DIMENSIONAL LIMITATIONS SHOWN ON DRAWING AND INITIALLY LOCATED TO ALLOW FOR MAXIMUM TOOL LIFE.

MATL SPEC	FINISH		
DRW M. York	DATE 2/26/2010	SCALE NTS	FINISH GOOD WT GRAMS/PIECE

UNLESS OTHERWISE SPECIFIED, DIMENSIONS ARE IN MILLIMETERS, DIMENSIONS IN BRACKETS [ ] ARE INCHES DIMENSIONING AND DO NOT INCLUDE PLATING. TOLERANCING TO BE INTERPRETED IN ACCORDANCE WITH ANSI Y14.5M-1994

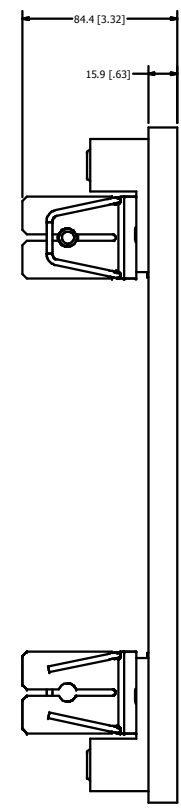
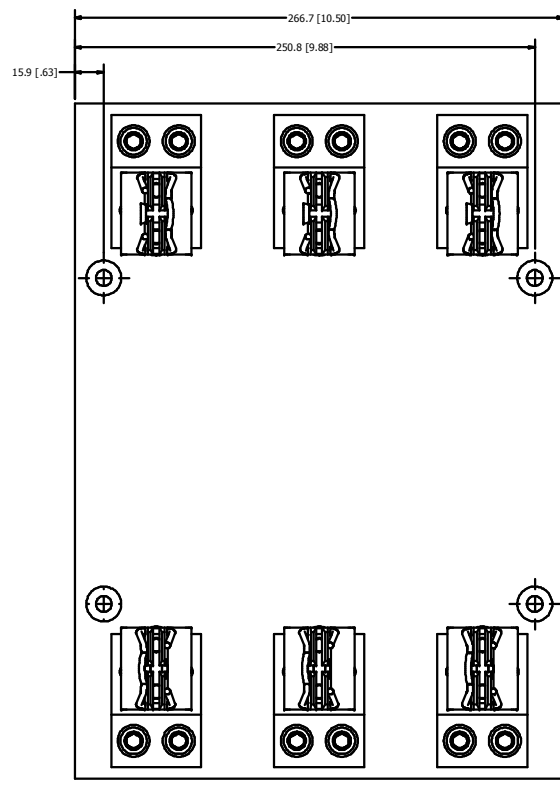
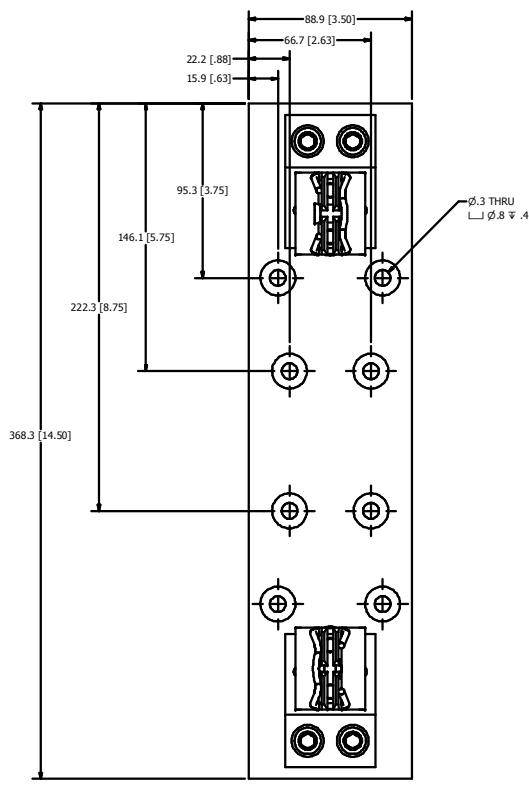


**TITLE** LFR60100 OUTLINE

<b>Littelfuse</b> DES PLAINES, ILLINOIS 60016	<b>REVISION</b> A	<b>DRWG NO.</b> OL-LFR60100 Series	<b>SHEET 1 OF 1</b>
--	----------------------	---------------------------------------	---------------------



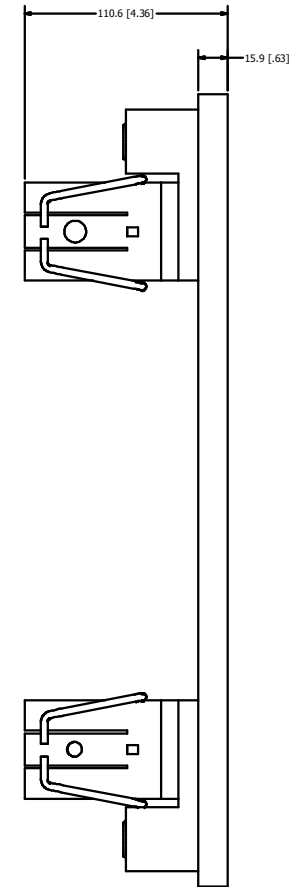
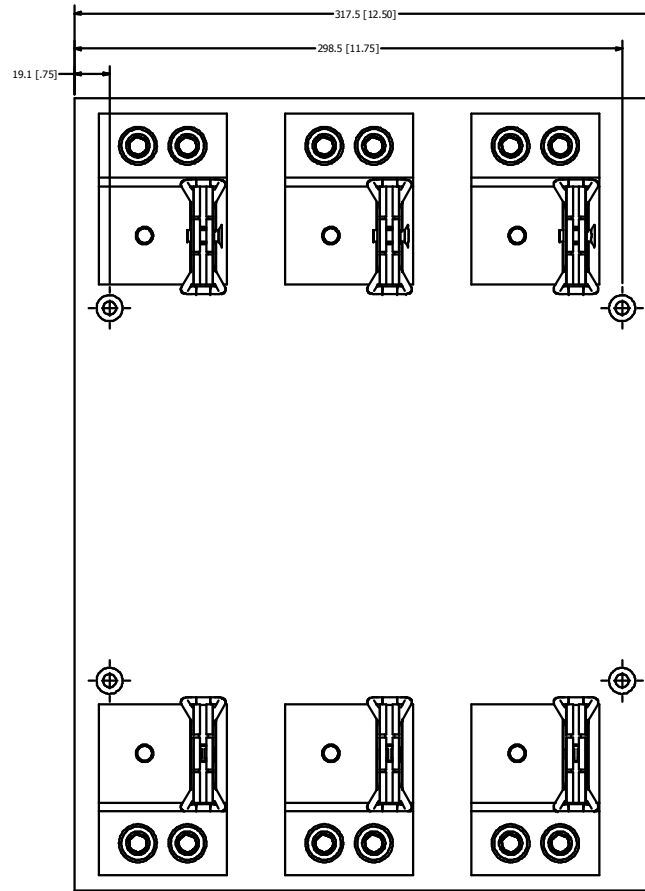
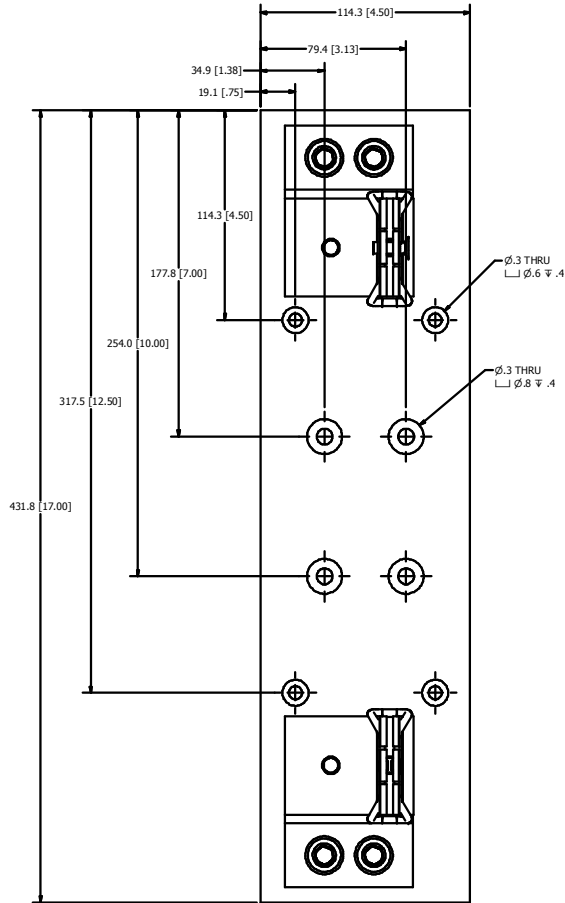
REV		DATE	DESCRIPTION
A	1/22/2005		Value



**SPECIFICATIONS:**  
**VOLTAGE RATING:** 600 V  
**AMPERE RATING:** 400 AMPERES  
**INTERRUPT RATING:** 200kA  
 300kA Littelfuse Self Certified  
**TERMINAL TYPE:** BOX LUG  
**SUGGESTED TORQUE:** 31.1 N-m (275 IN-LBS)  
**WIRE RANGE:** 350kcmil-1/0 AWG Cu/Al  
 SOLID/STRANDED  
**APPROVALS:** UL LISTED (FILE NO. E14721)  
 CSA CERTIFIED (FILE NO. LR73091)

●	DENOTES CRITICAL CHARACTERISTICS.		
CPK	DENOTES CPK DIMENSIONS, MINIMUM CPK VALUE		
Ⓢ	DENOTES A CHARACTERISTIC THAT PROVIDES AN INDICATION OF PROCESS PERFORMANCE. PROCEDURE FOR MEASUREMENT AND TRACKING TO BE DEFINED IN LITTELFUSE INSPECTOR INSTRUCTIONS.		
CP	DENOTES CP DIMENSIONS, MINIMUM CP VALUE MUST BE WITHIN THE DIMENSIONAL LIMITATIONS SHOWN OR DRAWING AND INITIALLY LOCATED TO ALLOW FOR MAXIMUM TOOL LIFE.		
FINISH SPEC:	FINISH		
DRW	DATE	SCALE	FINISH GOOD W/
IN 1/8"	2/26/2010	1:1	DRAGS/DRILL
UNLESS OTHERWISE SPECIFIED, DIMENSIONS ARE IN MILLIMETERS. DIMENSIONS IN BRACKETS [ ] ARE INCH DIMENSIONS AND DO NOT INCLUDE PLATING. TOLERANCING TO BE INTERPRETED IN ACCORDANCE WITH ANSI Y14.5M-1994.			
JOB FILED			
REVISED			
TITLE	LFR60400 OUTLINE		
	REVISION	DRWG NO.	SHEET 1 OF 1
A	OL-LFR60400 Series		

REV	DATE	REVISION	DESCRIPTION
A	10/2/2005		Value



**SPECIFICATIONS:**

- VOLTAGE RATING:** 600V
- AMPERE RATING:** 600 AMPERES
- INTERRUPT RATING:** 200kA  
300kA Littelfuse Self Certified
- TERMINAL TYPE:** BOX LUG
- SUGGESTED TORQUE:** 42.4 N-m (375 IN-LBS)
- WIRE RANGE:** 500kcmil-4 AWG Cu/Al  
SOLID/STRANDED
- APPROVALS:** UL LISTED (FILE NO. E14721)  
CSA CERTIFIED (FILE NO. LR73091)

●	DENOTES CRITICAL CHARACTERISTICS.		
CPK	DENOTES CPK DIMENSIONS, MINIMUM CPK VALUE		
Ⓢ	DENOTES A CHARACTERISTIC THAT PROVIDES AN INDICATION OF PROCESS PERFORMANCE. PROCEDURE FOR MEASUREMENT AND TRACKING TO BE DEFINED IN LITTELFUSE INSPECTOR INSTRUCTIONS.		
CP	DENOTES CP DIMENSIONS. MINIMUM CP VALUE MUST BE WITHIN THE DIMENSIONAL LIMITATIONS SHOWN ON DRAWING AND INITIALLY LOCATED TO ALLOW FOR MAXIMUM TOOL LIFE.		
FINISH	FINISH		
DRW	DATE	SCALE	FINISH GOOD WT
14-1008	12/26/2010	N/A	0.00000000
UNLESS OTHERWISE SPECIFIED, DIMENSIONS ARE IN MILLIMETERS. DIMENSIONS IN BRACKETS [ ] ARE INCHES DIMENSIONING AND DO NOT INCLUDE PLATING. TOLERANCING TO BE INTERPRETED IN ACCORDANCE WITH ANSI Y14.5M-1994.			
JOB NO.	TITLE		
00000000	LFR60000 OUTLINE		
Littelfuse MELBURN, IL 60068 88006		REVISION	DWG NO.
		A	OL-LFR60600 Series