



## ICP Test Report Certification Packet

Company name: Littelfuse, Inc.

Product Series: HR250V 60A, J30A, J60A series

Product #: HR250V 60A (LFR250602xxx), J30A (LFJ600303xxx),  
J 60A (LFJ600603xxx)

Issue Date: February 23, 2013

It is hereby certified by Littelfuse, Inc. that there is neither RoHS (EU Directive 2011/65/EU, recasting 2002/95/EC)-restricted substance nor such use, for materials to be used for unit parts, for packing/packaging materials, and for additives and the like in the manufacturing processes. In addition, it is hereby reported to you that the parts and sub-materials, the materials to be used for unit parts, the packing/packaging materials, and the additives and the like in the manufacturing processes, are all composed of the following components.

Issued by:   
KRISTEEN BACILA

\_\_\_\_\_  
<Global EHS Engineer>

(1) Parts, sub-materials and unit parts

This document covers the Diode RoHS-Compliant series products manufactured by Littelfuse, Inc.

< Raw Materials Used

Please see Table 1

(2) The ICP data on all measurable substances

Please see appropriate pages as identified in Table 1

Remarks :



**Table 1: List of Raw Materials covered by this report**

<b>Total Parts</b>	<b>Raw Material Part Number</b>	<b>Raw Material Description</b>	<b>Page(s)</b>
1	N/A	Base - PBT	3-11
2	N/A	PC 2407	12-20
3	N/A	POM Delrin	21-29
4	N/A	T3	30-35
5	N/A	65 Mn	36-40
6	N/A	Aluminum 6063-T5	41-46
7	N/A	Indicator Assay (Wire & insulation, resistor, lamp)	47-57
8	N/A	Brass	58-61
9	N/A	Steel	62-67
10	N/A	Zinc plating	66-69
11	N/A	Tin plating	70-73



Test Report

Number : TWNC00268062

Applicant: Littelfuse Philippines Inc.  
LIMA Technology Center, Lipa City,  
Malvar, Batangas

Date : Jul 27, 2012

Sample Description:

One (1) group of submitted samples said to be :  
Part Description : PBT Valox  
Date Sample Received : Jul 20, 2012  
Date Test Started : Jul 21, 2012

Test Conducted :

As requested by the applicant, for details please refer to attached pages.

Authorized By:  
On Behalf Of Intertek Testing Services  
Taiwan Limited



K. Y. Liang  
Director

This report shall not be reproduced  
except in full, without the written  
approval of the laboratory.

**Intertek Testing Services Taiwan Ltd.**

8F., No. 423, Ruiguang Rd., Neihu District, Taipei 114, Taiwan, R.O.C.

全國公證檢驗股份有限公司

114 台北市內湖區瑞光路 423 號 8 樓

Tel: (+886-2) 6602-2888 · 2797-8885 Fax: (+886-2) 6602-2410

Test Conducted

( I ) Test Result Summary :

<u>Test Item</u>	<u>Result (ppm)</u>
	<u>Black Plastic</u>
<b>Heavy Metal</b>	
Cadmium (Cd) content	ND
Lead (Pb) content	22
Mercury (Hg) content	ND
Chromium VI (Cr <sup>6+</sup> ) content	ND
<b>Polybrominated Biphenyls (PBBs)</b>	
Monobrominated Biphenyls (MonoBB)	ND
Dibrominated Biphenyls (DiBB)	ND
Tribrominated Biphenyls (TriBB)	ND
Tetrabrominated Biphenyls (TetraBB)	ND
Pentabrominated Biphenyls (PentaBB)	ND
Hexabrominated Biphenyls (HexaBB)	ND
Heptabrominated Biphenyls (HeptaBB)	ND
Octabrominated Biphenyls (OctaBB)	ND
Nonabrominated Biphenyls (NonaBB)	ND
Decabrominated Biphenyl (DecaBB)	ND
<b>Polybrominated Diphenyl Ethers (PBDEs)</b>	
Monobrominated Diphenyl Ethers (MonoBDE)	ND
Dibrominated Diphenyl Ethers (DiBDE)	ND
Tribrominated Diphenyl Ethers (TriBDE)	ND
Tetrabrominated Diphenyl Ethers (TetraBDE)	ND
Pentabrominated Diphenyl Ethers (PentaBDE)	ND
Hexabrominated Diphenyl Ethers (HexaBDE)	ND
Heptabrominated Diphenyl Ethers (HeptaBDE)	ND
Octabrominated Diphenyl Ethers (OctaBDE)	ND
Nonabrominated Diphenyl Ethers (NonaBDE)	ND
Decabrominated Diphenyl Ether (DecaBDE)	ND
<b>Halogen Content</b>	
Fluorine (F)	133
Chlorine (Cl)	ND
Bromine (Br)	34674
Iodine (I)	ND
<b>Phthalates</b>	
Di(2-ethylhexyl) Phthalate (DEHP)	ND
Dibutyl Phthalate (DBP)	ND
Benzyl Butyl Phthalate (BBP)	ND

Test Conducted

( I ) Test Result Summary :

<u>Test Item</u>	<u>Result (ppm)</u>
	<u>Black Plastic</u>
<b>Others</b>	
Hexabromocyclododecane (HBCDD)	ND

Remarks: ppm = Parts per million based on weight of tested sample = mg/kg  
ND = Not detected

Responsibility of Chemist : Irene Chiou / Kevin Liu / Cathy Chen

Date Sample Received : Jul 20, 2012

Test Period : Jul 21, 2012 To Jul 27, 2012

( II ) RoHS Limits:

<u>Restricted Substances</u>	<u>Limits</u>
Cadmium (Cd) Content	0.01% (100ppm)
Lead (Pb) Content	0.1% (1000ppm)
Mercury (Hg) Content	0.1% (1000ppm)
Chromium VI (Cr <sup>6+</sup> ) Content	0.1% (1000ppm)
Polybrominated Biphenyls (PBBs)	0.1% (1000ppm)
Polybrominated Diphenyl Ehters (PBDEs)	0.1% (1000ppm)

The above limits were quoted from Annex II of 2011/65/EU for homogeneous material.

---

## Test Conducted

## (III) Test Method:

<u>Test Item</u>	<u>Test Method</u>	<u>Reporting Limit</u>
Cadmium (Cd) content	With reference to IEC 62321 edition 1.0:2008 in clause 8/9/10, by microwave digestion until the tested samples are totally dissolved and determined by ICP-OES.	2 ppm
Lead (Pb) content	With reference to IEC 62321 edition 1.0:2008 in clause 8/9/10, by microwave digestion until the tested samples are totally dissolved and determined by ICP-OES.	2 ppm
Mercury (Hg) content	With reference to IEC 62321 edition 1.0:2008 in clause 7, by microwave digestion until the tested samples are totally dissolved and determined by ICP-OES.	2 ppm
Chromium VI (Cr <sup>6+</sup> ) content	With reference to IEC 62321 edition 1.0:2008 in annex C, by alkaline digestion and determined by UV-Vis spectrophotometer.	1 ppm
Polybrominated Biphenyls (PBBs)	With reference to IEC 62321 edition 1.0:2008 in annex A, by solvent extraction and determined by GC-MS and further HPLC-DAD confirmation when necessary.	5 ppm
Polybrominated Diphenyl Ethers (PBDEs)	With reference to IEC 62321 edition 1.0:2008 in annex A, by solvent extraction and determined by GC-MS and further HPLC-DAD confirmation when necessary.	5 ppm
Halogen Content	With reference to EN 14582:2007 by calorimetric bomb with oxygen and determined by Ion Chromatograph.	50 ppm
Phthalates	With reference to EN 14372: 2004, by solvent extraction and determined by GC-MS.	50 ppm
Hexabromocyclododecane (HBCDD)	With reference to USEPA 3540C, by solvent extraction and determined by GC-MSD.	10 ppm

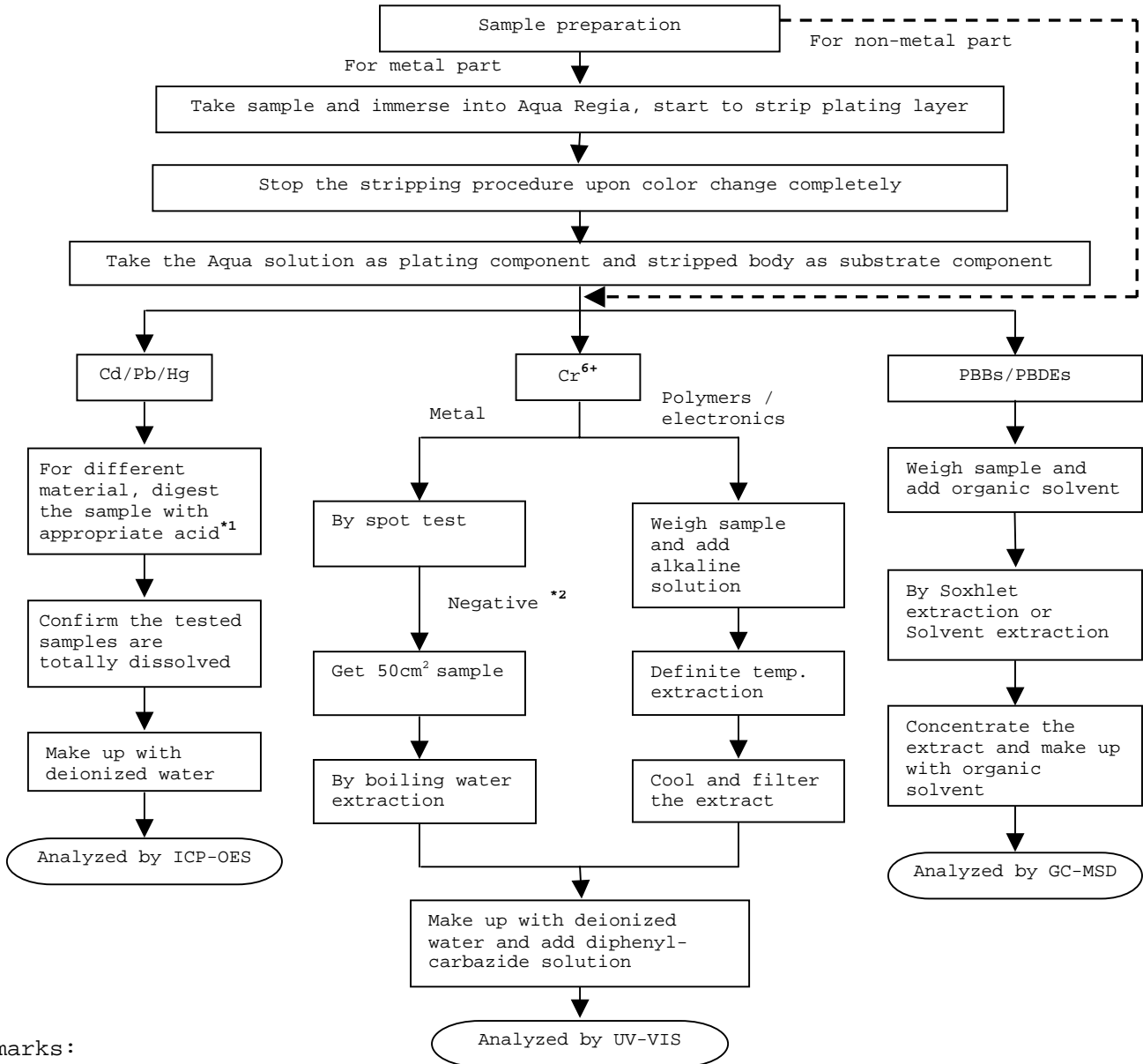
Remark: Reporting limit = Quantitation limit of analyte in sample

Test Conducted

(IV) Measurement Flowchart:

Test for Cd/Pb/Hg/Chromium (VI)/PBBS/PBDES Contents

Reference Standard: IEC 62321 edition 1.0:2008



Remarks:

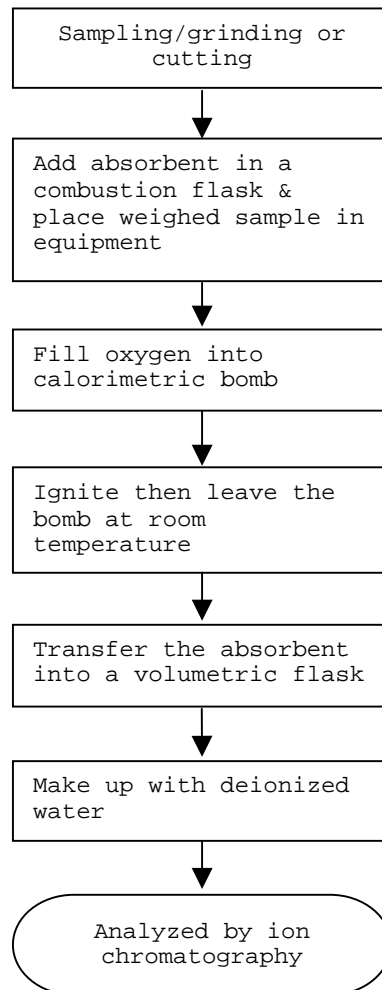
\*1: List of Appropriate Acid:

Material	Acid Added for Digestion
Polymers	HNO <sub>3</sub> , HCl, HF, H <sub>2</sub> O <sub>2</sub> , H <sub>3</sub> BO <sub>3</sub>
Metals	HNO <sub>3</sub> , HCl, HF
Electronics	HNO <sub>3</sub> , HCl, H <sub>2</sub> O <sub>2</sub> , HBF <sub>4</sub>

\*2: If the result of spot test is positive, Chromium VI would be determined as detected.

Test Conducted  
(IV) Measurement Flowchart:

Test for Halogen Content  
Reference Standard : EN 14582



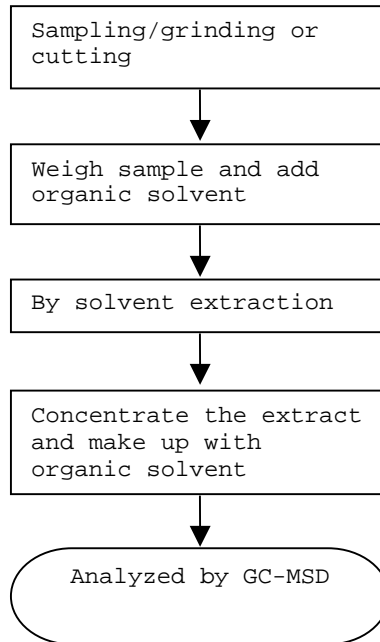


Test Conducted

(IV) Measurement Flowchart:

Test For Phthalates Contents

Reference Method: EN 14372: 2004

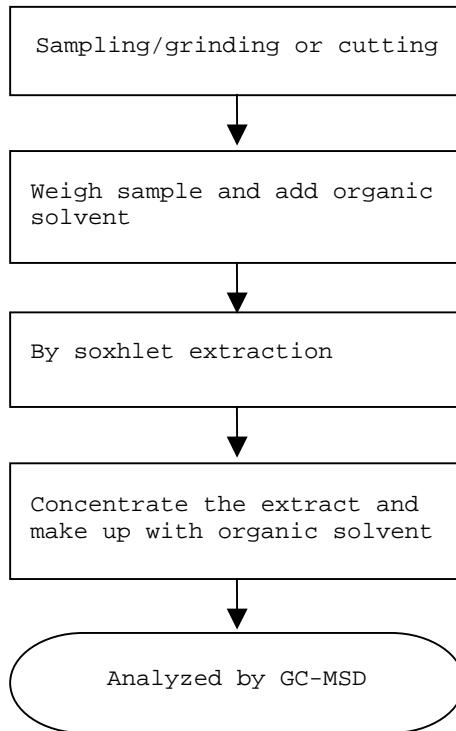




Number : TWNC00268062

Test Conducted  
(IV) Measurement Flowchart:

Test For Hexabromocyclododecane (HBCDD)  
Reference Standard : USEPA 3540C



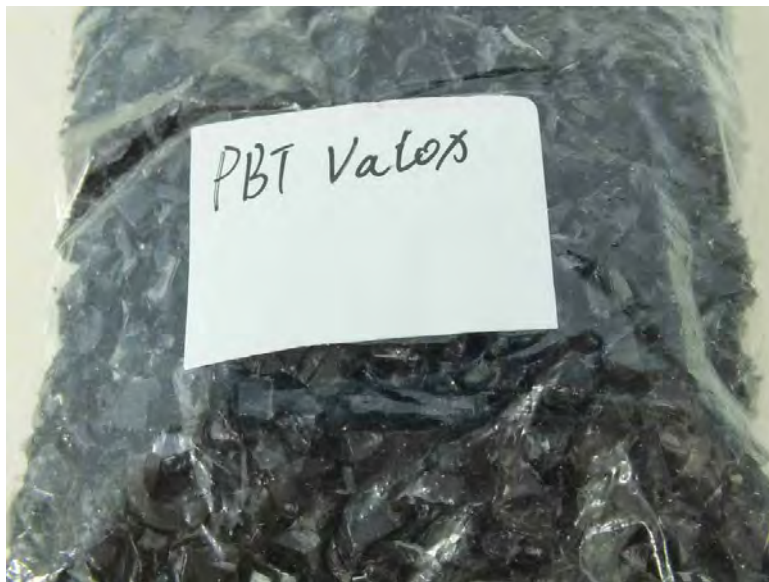
---

End of Report

*This report is made solely on the basis of your instructions and/or information and materials supplied by you. It is not intended to be a recommendation for any particular course of action. Intertek does not accept a duty of care or any other responsibility to any person other than the Client in respect of this report and only accepts liability to the Client insofar as is expressly contained in the terms and conditions governing Intertek's provision of services to you. Intertek makes no warranties or representations either express or implied with respect to this report save as provided for in those terms and conditions. We have aimed to conduct the Review on a diligent and careful basis and we do not accept any liability to you for any loss arising out of or in connection with this report, in contract, tort, by statute or otherwise, except in the event of our gross negligence or wilful misconduct.*

Test Conducted

Photo





Test Report

Number : TWNC00268065

Applicant: Littelfuse Philippines Inc.  
LIMA Technology Center, Lipa City,  
Malvar, Batangas

Date : Jul 26, 2012

Sample Description:

One (1) group of submitted samples said to be :  
Part Description : PC 2407  
Date Sample Received : Jul 20, 2012  
Date Test Started : Jul 21, 2012

Test Conducted :

As requested by the applicant, for details please refer to attached pages.

Authorized By:  
On Behalf Of Intertek Testing Services  
Taiwan Limited



K. Y. Liang  
Director

This report shall not be reproduced  
except in full, without the written  
approval of the laboratory.

## Test Conducted

## ( I ) Test Result Summary :

<u>Test Item</u>	<u>Result (ppm)</u>
	<u>Red Plastic</u>
<b>Heavy Metal</b>	
Cadmium (Cd) content	ND
Lead (Pb) content	ND
Mercury (Hg) content	ND
Chromium VI (Cr <sup>6+</sup> ) content	ND
<b>Polybrominated Biphenyls (PBBs)</b>	
Monobrominated Biphenyls (MonoBB)	ND
Dibrominated Biphenyls (DiBB)	ND
Tribrominated Biphenyls (TriBB)	ND
Tetrabrominated Biphenyls (TetraBB)	ND
Pentabrominated Biphenyls (PentaBB)	ND
Hexabrominated Biphenyls (HexaBB)	ND
Heptabrominated Biphenyls (HeptaBB)	ND
Octabrominated Biphenyls (OctaBB)	ND
Nonabrominated Biphenyls (NonaBB)	ND
Decabrominated Biphenyl (DecaBB)	ND
<b>Polybrominated Diphenyl Ethers (PBDEs)</b>	
Monobrominated Diphenyl Ethers (MonoBDE)	ND
Dibrominated Diphenyl Ethers (DiBDE)	ND
Tribrominated Diphenyl Ethers (TriBDE)	ND
Tetrabrominated Diphenyl Ethers (TetraBDE)	ND
Pentabrominated Diphenyl Ethers (PentaBDE)	ND
Hexabrominated Diphenyl Ethers (HexaBDE)	ND
Heptabrominated Diphenyl Ethers (HeptaBDE)	ND
Octabrominated Diphenyl Ethers (OctaBDE)	ND
Nonabrominated Diphenyl Ethers (NonaBDE)	ND
Decabrominated Diphenyl Ether (DecaBDE)	ND
<b>Halogen Content</b>	
Fluorine (F)	271
Chlorine (Cl)	243
Bromine (Br)	ND
Iodine (I)	ND

Test Conducted

( I ) Test Result Summary :

<u>Test Item</u>	<u>Result (ppm)</u>
	<u>Red Plastic</u>
<b>Phthalates</b>	
Di(2-ethylhexyl) Phthalate (DEHP)	ND
Dibutyl Phthalate (DBP)	ND
Benzyl Butyl Phthalate (BBP)	ND
<b>Others</b>	
Hexabromocyclododecane (HBCDD)	ND

Remarks: ppm = Parts per million based on weight of tested sample = mg/kg  
 ND = Not detected

Responsibility of Chemist : Irene Chiou / Kevin Liu / Cathy Chen

Date Sample Received : Jul 20, 2012

Test Period : Jul 21, 2012 To Jul 25, 2012

( II ) RoHS Requirement:

<u>Restricted Substances</u>	<u>Limits</u>
Cadmium (Cd) Content	0.01% (100ppm)
Lead (Pb) Content	0.1% (1000ppm)
Mercury (Hg) Content	0.1% (1000ppm)
Chromium VI (Cr <sup>6+</sup> ) Content	0.1% (1000ppm)
Polybrominated Biphenyls (PBBs)	0.1% (1000ppm)
Polybrominated Diphenyl Ehters (PBDEs)	0.1% (1000ppm)

The above limits were quoted from 2002/95/EC and amendment 2005/618/EC for homogeneous material.

## Test Conducted

## (III) Test Method:

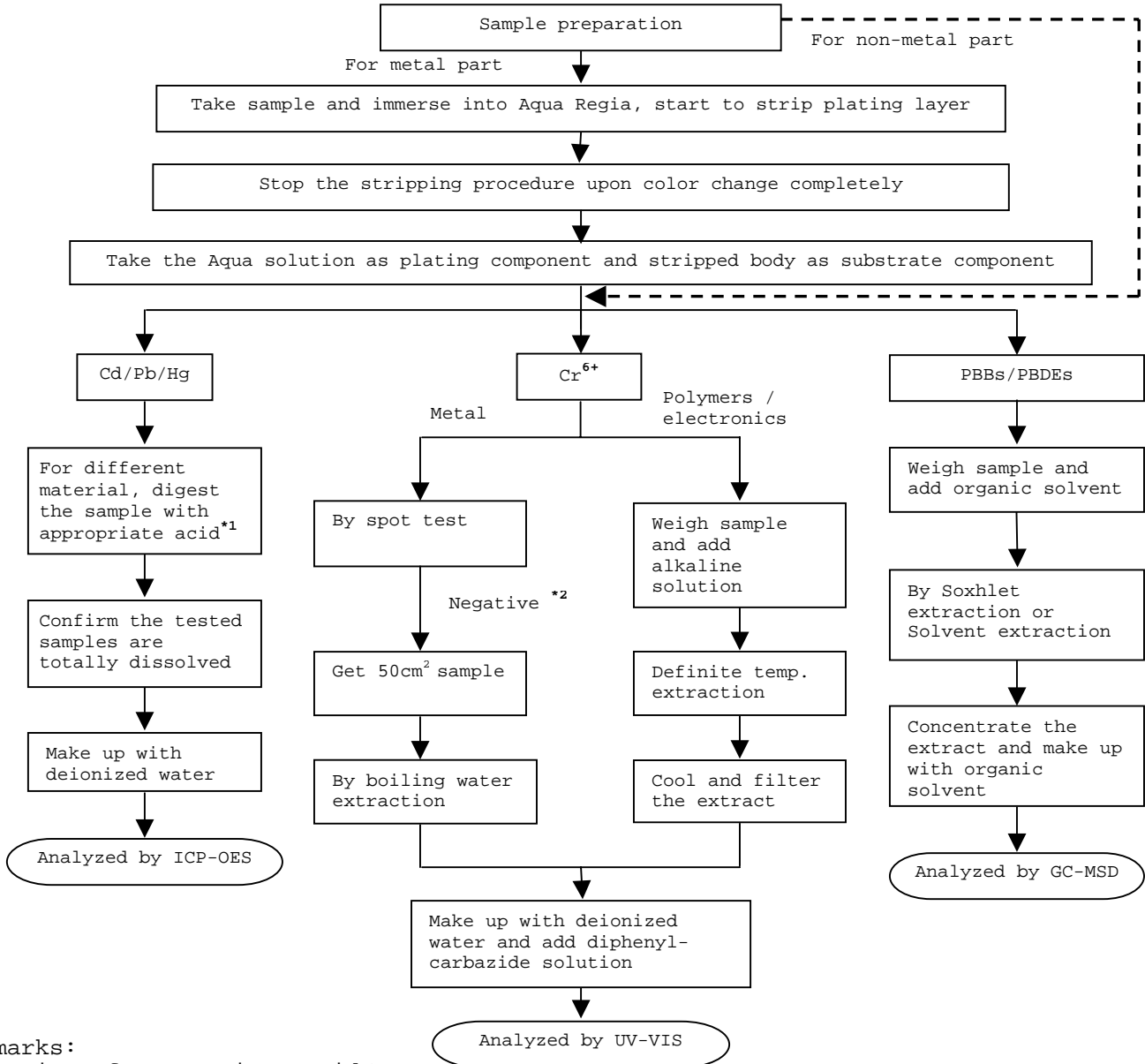
<u>Test Item</u>	<u>Test Method</u>	<u>Reporting Limit</u>
Cadmium (Cd) content	With reference to IEC 62321 edition 1.0:2008 in clause 8/9/10, by microwave digestion until the tested samples are totally dissolved and determined by ICP-OES.	2 ppm
Lead (Pb) content	With reference to IEC 62321 edition 1.0:2008 in clause 8/9/10, by microwave digestion until the tested samples are totally dissolved and determined by ICP-OES.	2 ppm
Mercury (Hg) content	With reference to IEC 62321 edition 1.0:2008 in clause 7, by microwave digestion until the tested samples are totally dissolved and determined by ICP-OES.	2 ppm
Chromium VI (Cr <sup>6+</sup> ) content	With reference to IEC 62321 edition 1.0:2008 in annex C, by alkaline digestion and determined by UV-Vis spectrophotometer.	1 ppm
Polybrominated Biphenyls (PBBs)	With reference to IEC 62321 edition 1.0:2008 in annex A, by solvent extraction and determined by GC-MS and further HPLC-DAD confirmation when necessary.	5 ppm
Polybrominated Diphenyl Ethers (PBDEs)	With reference to IEC 62321 edition 1.0:2008 in annex A, by solvent extraction and determined by GC-MS and further HPLC-DAD confirmation when necessary.	5 ppm
Halogen Content	With reference to EN 14582:2007 by calorimetric bomb with oxygen and determined by Ion Chromatograph.	50 ppm
Phthalates	With reference to EN 14372: 2004, by solvent extraction and determined by GC-MS.	50 ppm
Hexabromocyclododecane (HBCDD)	With reference to USEPA 3540C, by solvent extraction and determined by GC-MSD.	10 ppm

Remark: Reporting limit = Quantitation limit of analyte in sample

Test Conducted

(IV) Measurement Flowchart:

Test for Cd/Pb/Hg/Chromium (VI)/PBBS/PBDES Contents  
Reference Standard: IEC 62321 edition 1.0:2008



Remarks:

\*1: List of Appropriate Acid:

Material	Acid Added for Digestion
Polymers	HNO <sub>3</sub> , HCl, HF, H <sub>2</sub> O <sub>2</sub> , H <sub>3</sub> BO <sub>3</sub>
Metals	HNO <sub>3</sub> , HCl, HF
Electronics	HNO <sub>3</sub> , HCl, H <sub>2</sub> O <sub>2</sub> , HBF <sub>4</sub>

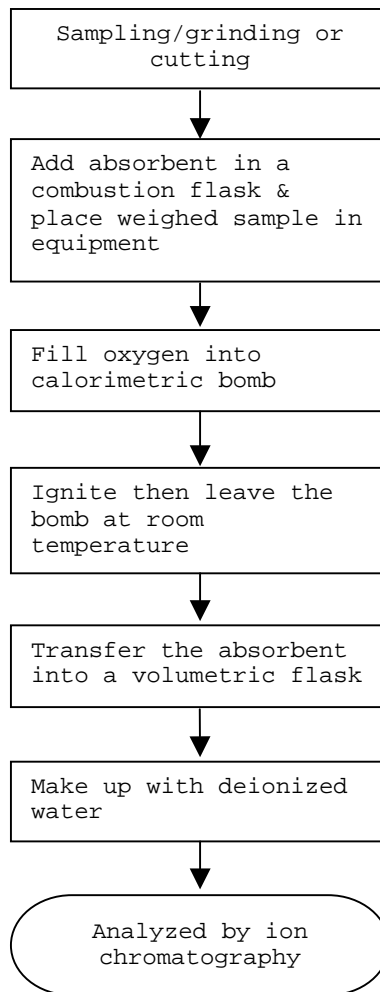
\*2: If the result of spot test is positive, Chromium VI would be determined as detected.



Test Conducted

(IV) Measurement Flowchart:

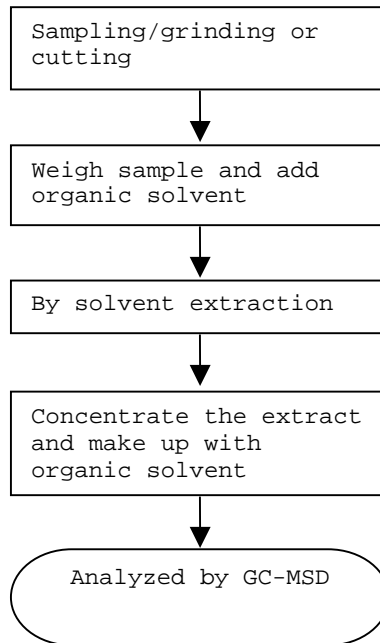
Test for Halogen Content  
Reference Standard : EN 14582



Test Conducted

(IV) Measurement Flowchart:

Test For Phthalates Contents  
Reference Method: EN 14372: 2004

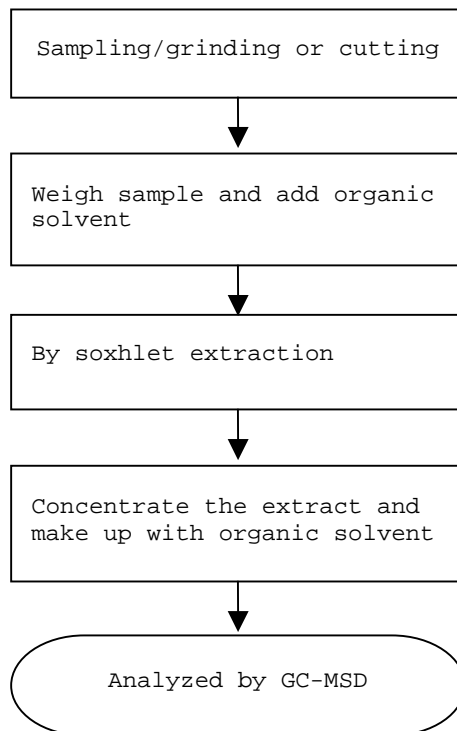


Test Conducted

(IV) Measurement Flowchart:

Test For Hexabromocyclododecane (HBCDD)

Reference Standard : USEPA 3540C



---

End of Report

*This report is made solely on the basis of your instructions and/or information and materials supplied by you. It is not intended to be a recommendation for any particular course of action. Intertek does not accept a duty of care or any other responsibility to any person other than the Client in respect of this report and only accepts liability to the Client insofar as is expressly contained in the terms and conditions governing Intertek's provision of services to you. Intertek makes no warranties or representations either express or implied with respect to this report save as provided for in those terms and conditions. We have aimed to conduct the Review on a diligent and careful basis and we do not accept any liability to you for any loss arising out of or in connection with this report, in contract, tort, by statute or otherwise, except in the event of our gross negligence or wilful misconduct.*

Test Conducted

Photo





Test Report

Number : TWNC00268066

Applicant: Littelfuse Philippines Inc.  
LIMA Technology Center, Lipa City,  
Malvar, Batangas

Date : Jul 26, 2012

Sample Description:

One (1) group of submitted samples said to be :  
Part Description : POM 500P (Red Colorant)  
Date Sample Received : Jul 20, 2012  
Date Test Started : Jul 21, 2012

Test Conducted :

As requested by the applicant, for details please refer to attached pages.

Authorized By:  
On Behalf Of Intertek Testing Services  
Taiwan Limited



K. Y. Liang  
Director

This report shall not be reproduced  
except in full, without the written  
approval of the laboratory.

## Test Conducted

## ( I ) Test Result Summary :

<u>Test Item</u>	<u>Result (ppm)</u>
	Red Plastic Pellets
<b>Heavy Metal</b>	
Cadmium (Cd) content	ND
Lead (Pb) content	ND
Mercury (Hg) content	ND
Chromium VI (Cr <sup>6+</sup> ) content	ND
<b>Polybrominated Biphenyls (PBBs)</b>	
Monobrominated Biphenyls (MonoBB)	ND
Dibrominated Biphenyls (DiBB)	ND
Tribrominated Biphenyls (TriBB)	ND
Tetrabrominated Biphenyls (TetraBB)	ND
Pentabrominated Biphenyls (PentaBB)	ND
Hexabrominated Biphenyls (HexaBB)	ND
Heptabrominated Biphenyls (HeptaBB)	ND
Octabrominated Biphenyls (OctaBB)	ND
Nonabrominated Biphenyls (NonaBB)	ND
Decabrominated Biphenyl (DecaBB)	ND
<b>Polybrominated Diphenyl Ethers (PBDEs)</b>	
Monobrominated Diphenyl Ethers (MonoBDE)	ND
Dibrominated Diphenyl Ethers (DiBDE)	ND
Tribrominated Diphenyl Ethers (TriBDE)	ND
Tetrabrominated Diphenyl Ethers (TetraBDE)	ND
Pentabrominated Diphenyl Ethers (PentaBDE)	ND
Hexabrominated Diphenyl Ethers (HexaBDE)	ND
Heptabrominated Diphenyl Ethers (HeptaBDE)	ND
Octabrominated Diphenyl Ethers (OctaBDE)	ND
Nonabrominated Diphenyl Ethers (NonaBDE)	ND
Decabrominated Diphenyl Ether (DecaBDE)	ND
<b>Halogen Content</b>	
Fluorine (F)	ND
Chlorine (Cl)	3797
Bromine (Br)	ND
Iodine (I)	ND

Test Conducted

( I ) Test Result Summary :

<u>Test Item</u>	<u>Result (ppm)</u>
	Red Plastic Pellets
<b>Phthalates</b>	
Di(2-ethylhexyl) Phthalate (DEHP)	ND
Dibutyl Phthalate (DBP)	ND
Benzyl Butyl Phthalate (BBP)	ND
<b>Others</b>	
Hexabromocyclododecane (HBCDD)	ND

Remarks: ppm = Parts per million based on weight of tested sample = mg/kg  
 ND = Not detected

Responsibility of Chemist : Irene Chiou / Kevin Liu / Cathy Chen

Date Sample Received : Jul 20, 2012

Test Period : Jul 21, 2012 To Jul 25, 2012

( II ) RoHS Requirement:

<u>Restricted Substances</u>	<u>Limits</u>
Cadmium (Cd) Content	0.01% (100ppm)
Lead (Pb) Content	0.1% (1000ppm)
Mercury (Hg) Content	0.1% (1000ppm)
Chromium VI (Cr <sup>6+</sup> ) Content	0.1% (1000ppm)
Polybrominated Biphenyls (PBBs)	0.1% (1000ppm)
Polybrominated Diphenyl Ehters (PBDEs)	0.1% (1000ppm)

The above limits were quoted from 2002/95/EC and amendment 2005/618/EC for homogeneous material.

## Test Conducted

## (III) Test Method:

<u>Test Item</u>	<u>Test Method</u>	<u>Reporting Limit</u>
Cadmium (Cd) content	With reference to IEC 62321 edition 1.0:2008 in clause 8/9/10, by microwave digestion until the tested samples are totally dissolved and determined by ICP-OES.	2 ppm
Lead (Pb) content	With reference to IEC 62321 edition 1.0:2008 in clause 8/9/10, by microwave digestion until the tested samples are totally dissolved and determined by ICP-OES.	2 ppm
Mercury (Hg) content	With reference to IEC 62321 edition 1.0:2008 in clause 7, by microwave digestion until the tested samples are totally dissolved and determined by ICP-OES.	2 ppm
Chromium VI (Cr <sup>6+</sup> ) content	With reference to IEC 62321 edition 1.0:2008 in annex C, by alkaline digestion and determined by UV-Vis spectrophotometer.	1 ppm
Polybrominated Biphenyls (PBBs)	With reference to IEC 62321 edition 1.0:2008 in annex A, by solvent extraction and determined by GC-MS and further HPLC-DAD confirmation when necessary.	5 ppm
Polybrominated Diphenyl Ethers (PBDEs)	With reference to IEC 62321 edition 1.0:2008 in annex A, by solvent extraction and determined by GC-MS and further HPLC-DAD confirmation when necessary.	5 ppm
Halogen Content	With reference to EN 14582:2007 by calorimetric bomb with oxygen and determined by Ion Chromatograph.	50 ppm
Phthalates	With reference to EN 14372: 2004, by solvent extraction and determined by GC-MS.	50 ppm
Hexabromocyclododecane (HBCDD)	With reference to USEPA 3540C, by solvent extraction and determined by GC-MSD.	10 ppm

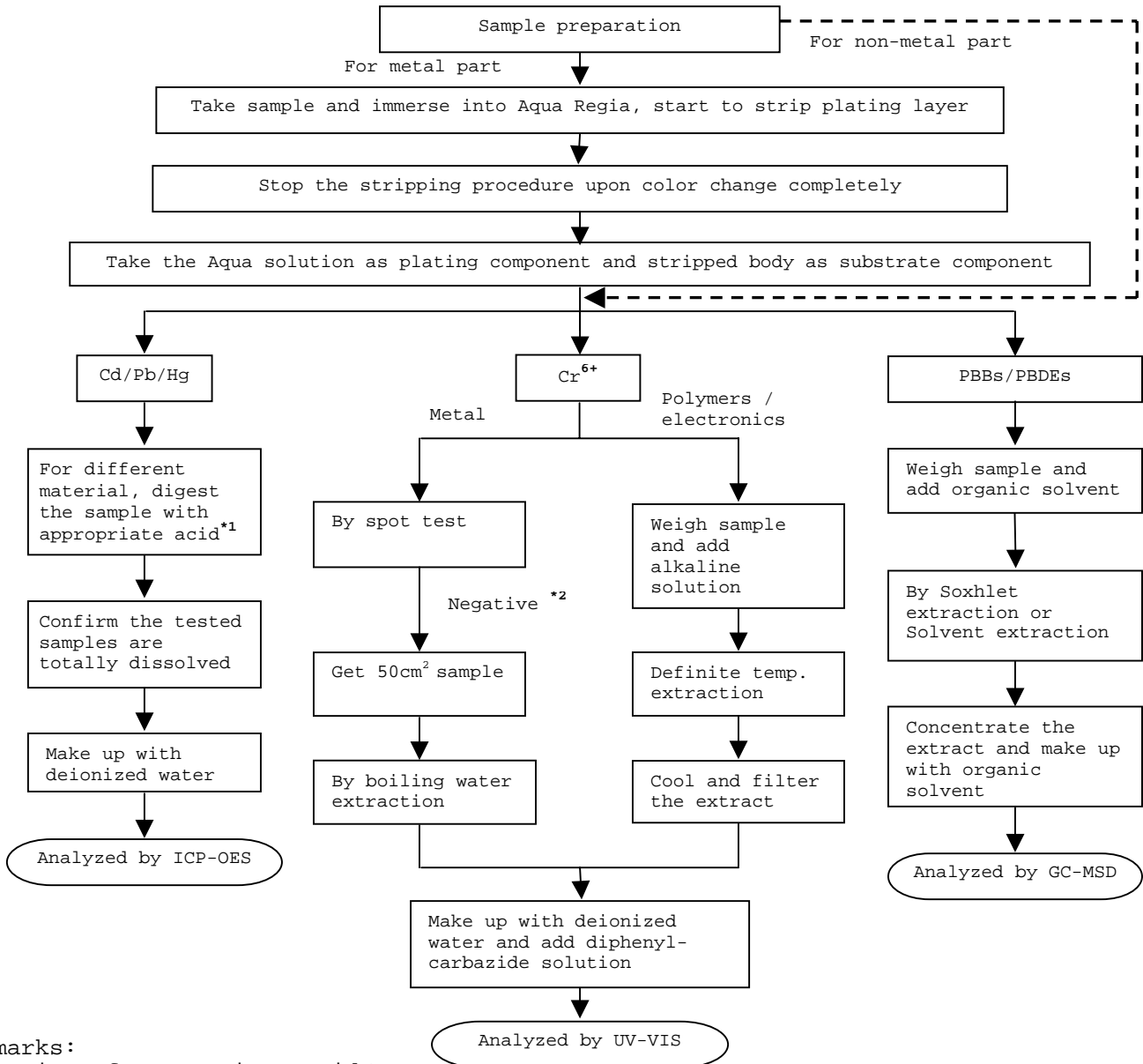
Remark: Reporting limit = Quantitation limit of analyte in sample



Test Conducted

(IV) Measurement Flowchart:

Test for Cd/Pb/Hg/Chromium (VI)/PBBS/PBDES Contents  
 Reference Standard: IEC 62321 edition 1.0:2008



Remarks:

\*1: List of Appropriate Acid:

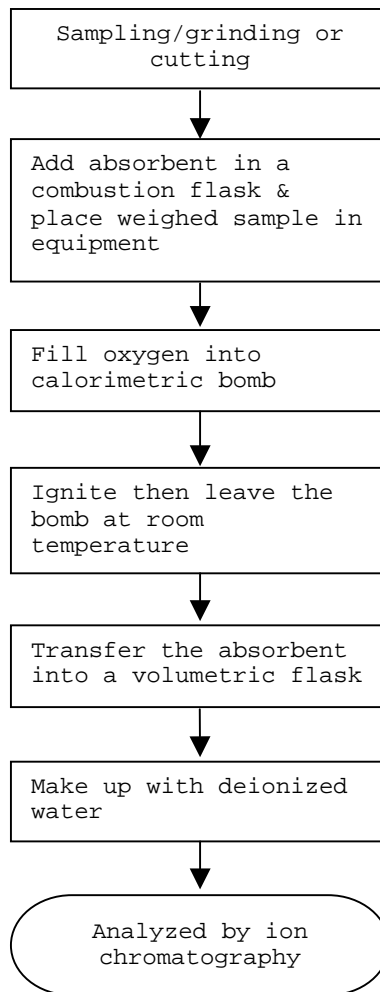
Material	Acid Added for Digestion
Polymers	HNO <sub>3</sub> , HCl, HF, H <sub>2</sub> O <sub>2</sub> , H <sub>3</sub> BO <sub>3</sub>
Metals	HNO <sub>3</sub> , HCl, HF
Electronics	HNO <sub>3</sub> , HCl, H <sub>2</sub> O <sub>2</sub> , HBF <sub>4</sub>

\*2: If the result of spot test is positive, Chromium VI would be determined as detected.

Test Conducted

(IV) Measurement Flowchart:

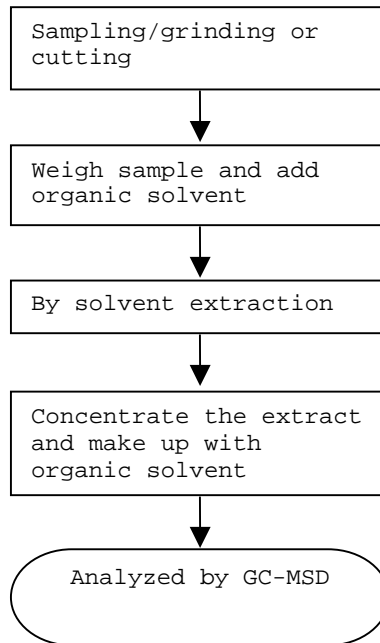
Test for Halogen Content  
Reference Standard : EN 14582



Test Conducted

(IV) Measurement Flowchart:

Test For Phthalates Contents  
Reference Method: EN 14372: 2004

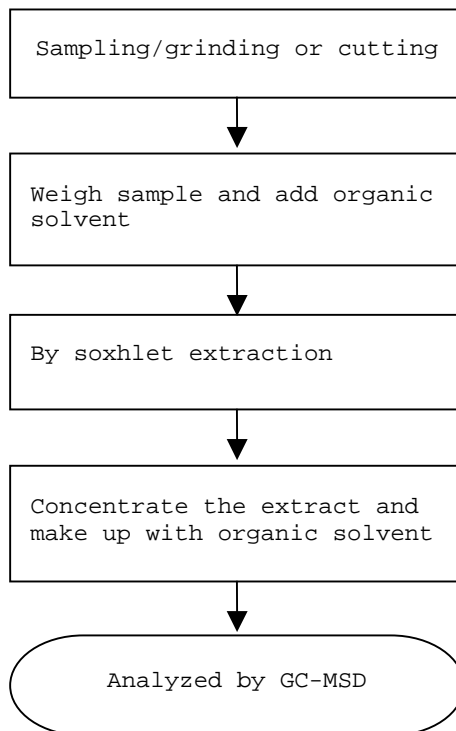


Test Conducted

(IV) Measurement Flowchart:

Test For Hexabromocyclododecane (HBCDD)

Reference Standard : USEPA 3540C



---

End of Report

*This report is made solely on the basis of your instructions and/or information and materials supplied by you. It is not intended to be a recommendation for any particular course of action. Intertek does not accept a duty of care or any other responsibility to any person other than the Client in respect of this report and only accepts liability to the Client insofar as is expressly contained in the terms and conditions governing Intertek's provision of services to you. Intertek makes no warranties or representations either express or implied with respect to this report save as provided for in those terms and conditions. We have aimed to conduct the Review on a diligent and careful basis and we do not accept any liability to you for any loss arising out of or in connection with this report, in contract, tort, by statute or otherwise, except in the event of our gross negligence or wilful misconduct.*

Test Conducted

Photo





Test Report

Number : TWNC00268064

Applicant: Littelfuse Philippines Inc.  
LIMA Technology Center, Lipa City,  
Malvar, Batangas

Date : Jul 27, 2012

Sample Description:

One (1) group of submitted samples said to be :

Part Description : Copper  
Part Number : T3  
Date Sample Received : Jul 20, 2012  
Date Test Started : Jul 21, 2012

Test Conducted :

As requested by the applicant, for details please refer to attached pages.

Authorized By:  
On Behalf Of Intertek Testing Services  
Taiwan Limited



K. Y. Liang  
Director

This report shall not be reproduced  
except in full, without the written  
approval of the laboratory.

Test Conducted

( I ) Test Result Summary :

<u>Test Item</u>	<u>Result (ppm)</u>
	<u>Coppery Metal</u>
<b>Heavy Metal</b>	
Cadmium (Cd) content	ND
Lead (Pb) content	32
Mercury (Hg) content	ND
Chromium VI (Cr <sup>6+</sup> ) content (mg/kg with 50cm <sup>2</sup> )	Negative (< 0.02)

Remarks: ppm = Parts per million based on weight of tested sample = mg/kg  
 ND = Not detected  
 < = Less than  
 mg/kg with 50cm<sup>2</sup> = milligram per kilogram with 50 square centimetre  
 Negative = A negative test result indicated positive observation was not found at the time of Test.

Responsibility of Chemist : Irene Chiou / Kevin Liu / Cathy Chen

Date Sample Received : Jul 20, 2012  
 Test Period : Jul 21, 2012 To Jul 27, 2012

( II ) RoHS Limits:

<u>Restricted Substances</u>	<u>Limits</u>
Cadmium (Cd) Content	0.01% (100ppm)
Lead (Pb) Content	0.1% (1000ppm)
Mercury (Hg) Content	0.1% (1000ppm)
Chromium VI (Cr <sup>6+</sup> ) Content	0.1% (1000ppm)

The above limits were quoted from Annex II of 2011/65/EU for homogeneous material.

## Test Conducted

## ( III ) Test Method:

<u>Test Item</u>	<u>Test Method</u>	<u>Reporting Limit</u>
Cadmium (Cd) content	With reference to IEC 62321 edition 1.0:2008 in clause 8/9/10, by microwave digestion until the tested samples are totally dissolved and determined by ICP-OES.	2 ppm
Lead (Pb) content	With reference to IEC 62321 edition 1.0:2008 in clause 8/9/10, by microwave digestion until the tested samples are totally dissolved and determined by ICP-OES.	2 ppm
Mercury (Hg) content	With reference to IEC 62321 edition 1.0:2008 in clause 7, by microwave digestion until the tested samples are totally dissolved and determined by ICP-OES.	2 ppm
Chromium VI (Cr <sup>6+</sup> ) content	With reference to IEC 62321 edition 1.0:2008 in annex B, by boiling water extraction and determined by UV-Vis Spectrophotometer.	0.02 mg/kg with 50cm <sup>2</sup>

Remark: Reporting limit = Quantitation limit of analyte in sample

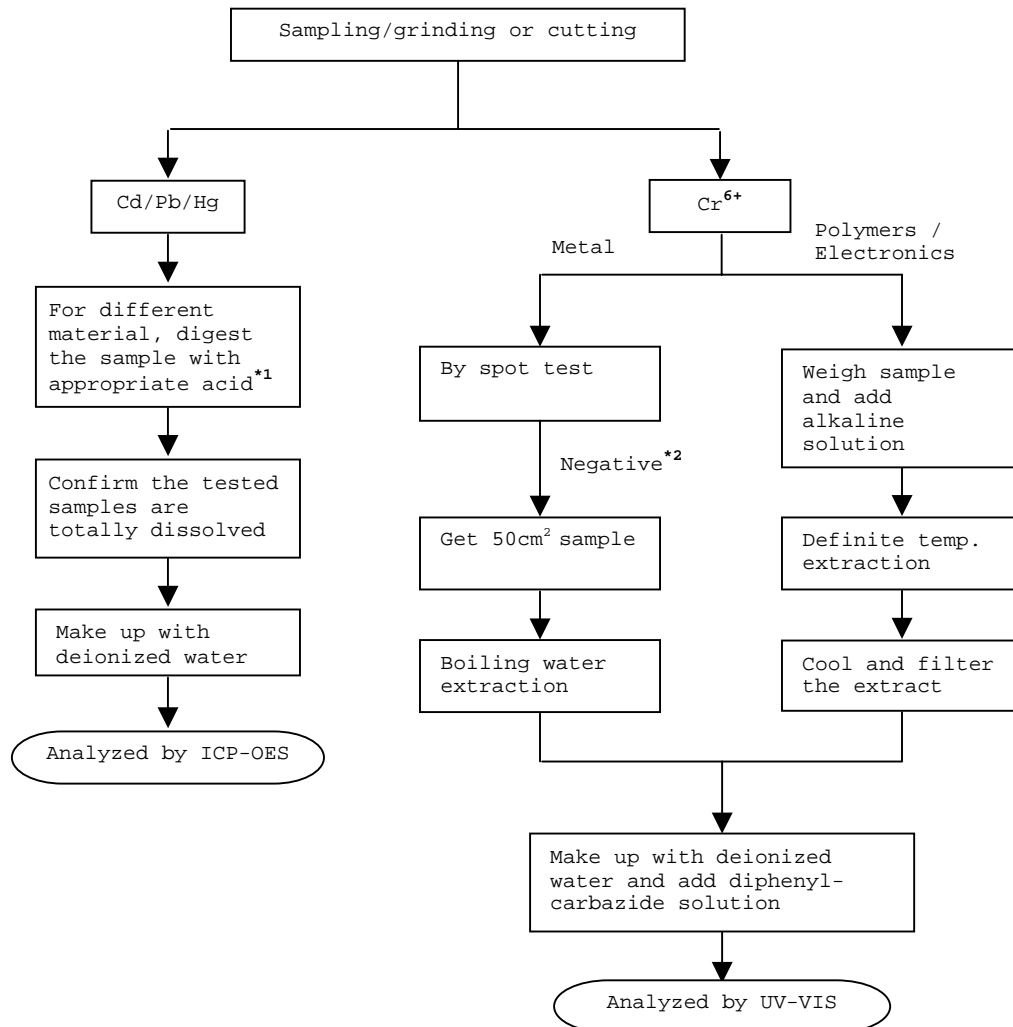
---



Test Conducted

(IV) Measurement Flowchart:

Test For Cd/Pb/Hg/Chromium (VI)  
Reference Standard : IEC 62321 edition 1.0:2008





Number : TWNC00268064

Test Conducted

Remarks:

\*1: List Of Appropriate Acid:

<u>Material</u>	<u>Acid Added For Digestion</u>
Polymers	HNO <sub>3</sub> , HCl, HF, H <sub>2</sub> O <sub>2</sub> , H <sub>3</sub> BO <sub>3</sub>
Metals	HNO <sub>3</sub> , HCl, HF
Electronics	HNO <sub>3</sub> , HCl, H <sub>2</sub> O <sub>2</sub> , HBF <sub>4</sub>

\*2: If the result of spot test is positive, Chromium VI would be determined as detected.

End of Report

*This report is made solely on the basis of your instructions and/or information and materials supplied by you. It is not intended to be a recommendation for any particular course of action. Intertek does not accept a duty of care or any other responsibility to any person other than the Client in respect of this report and only accepts liability to the Client insofar as is expressly contained in the terms and conditions governing Intertek's provision of services to you. Intertek makes no warranties or representations either express or implied with respect to this report save as provided for in those terms and conditions. We have aimed to conduct the Review on a diligent and careful basis and we do not accept any liability to you for any loss arising out of or in connection with this report, in contract, tort, by statute or otherwise, except in the event of our gross negligence or wilful misconduct.*

Test Conducted

Photo





**Test Report**

Number : TWNC00238069

Applicant: Littelfuse, Philippines Inc.  
LIMA Technology Center, Lipa City,  
Malvar, Batangas

Date : Dec 27, 2011

Sample Description:

One (1) group of submitted samples said to be :

Part Description : Metal  
Part Number : 65Mn  
Date Sample Received : Dec 22, 2011  
Date Test Started : Dec 23, 2011

Test Conducted :

As requested by the applicant, for details please refer to attached pages.

Authorized By:  
On Behalf Of Intertek Testing Services  
Taiwan Limited



K. Y. Liang  
Director

This report shall not be reproduced  
except in full, without the written  
approval of the laboratory.



Number : TWNC00238069

Test Conducted

( I ) Test Result Summary :

<u>Test Item</u>	<u>Result (ppm)</u>	
	<u>(1)</u>	<u>(2)</u>
<b>Heavy Metal</b>		
Cadmium (Cd) content	ND	ND
Lead (Pb) content	ND	ND
Mercury (Hg) content	ND	ND
Chromium VI (Cr <sup>6+</sup> ) content (mg/kg with 50cm <sup>2</sup> )	Negative ( < 0.02 )	Negative ( < 0.02 )

Remarks: ppm = Parts per million based on weight of tested sample = mg/kg  
 ND = Not detected  
 < = Less than  
 mg/kg with 50cm<sup>2</sup> = milligram per kilogram with 50 square centimetre  
 Negative = A negative test result indicated positive observation was not found at the time of Test.

Tested Components

- (1) Silvery Metal Base Material
- (2) Silvery Plating Layer

Responsibility of Chemist : Irene Chiou / Kevin Liu

Date Sample Received : Dec 22, 2011

Test Period : Dec 23, 2011 To Dec 26, 2011

( II ) RoHS Requirement:

<u>Restricted Substances</u>	<u>Limits</u>
Cadmium (Cd) Content	0.01% (100ppm)
Lead (Pb) Content	0.1% (1000ppm)
Mercury (Hg) Content	0.1% (1000ppm)
Chromium VI (Cr <sup>6+</sup> ) Content	0.1% (1000ppm)

The above limits were quoted from 2002/95/EC and amendment 2005/618/EC for homogeneous material.

---



Number : TWNC00238069

Test Conducted

( III ) Test Method:

<u>Test Item</u>	<u>Test Method</u>	<u>Reporting Limit</u>
Cadmium (Cd) content	With reference to IEC 62321 edition 1.0:2008 in clause 8/9/10, by microwave digestion until the tested samples are totally dissolved and determined by ICP-OES.	2 ppm
Lead (Pb) content	With reference to IEC 62321 edition 1.0:2008 in clause 8/9/10, by microwave digestion until the tested samples are totally dissolved and determined by ICP-OES.	2 ppm
Mercury (Hg) content	With reference to IEC 62321 edition 1.0:2008 in clause 7, by microwave digestion until the tested samples are totally dissolved and determined by ICP-OES.	2 ppm
Chromium VI (Cr <sup>6+</sup> ) content	With reference to IEC 62321 edition 1.0:2008 in annex B, by boiling water extraction and determined by UV-Vis Spectrophotometer.	0.02 mg/kg with 50cm <sup>2</sup>

Remark: Reporting limit = Quantitation limit of analyte in sample

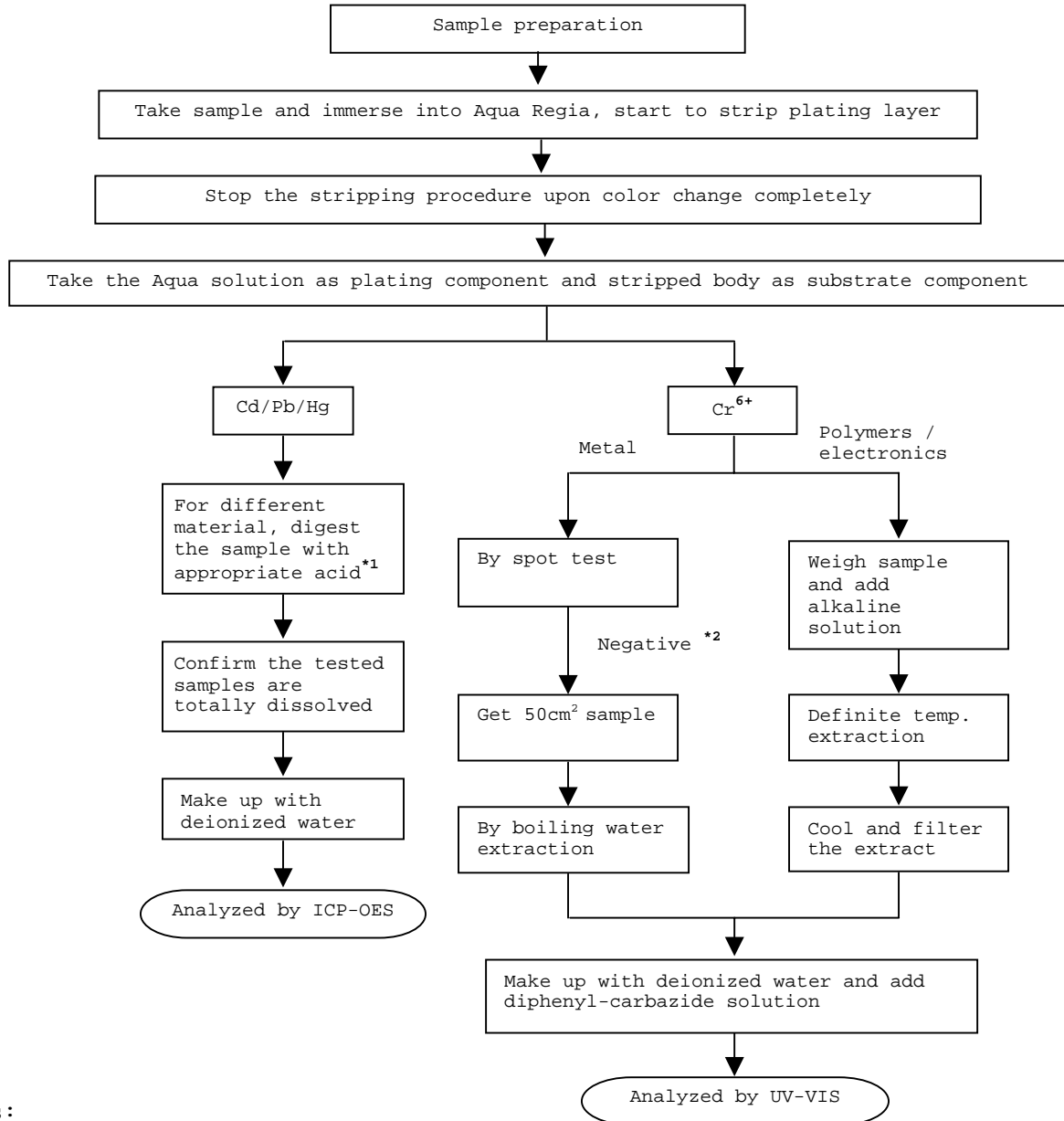
---

Test Conducted

(IV) Measurement Flowchart:

Test for Cd/Pb/Hg/Chromium (VI)

Reference Standard : IEC 62321 edition 1.0:2008



Remarks:

\*1: List of Appropriate Acid:

Material	Acid Added for Digestion
Polymers	HNO <sub>3</sub> , HCl, HF, H <sub>2</sub> O <sub>2</sub> , H <sub>3</sub> BO <sub>3</sub>
Metals	HNO <sub>3</sub> , HCl, HF
Electronics	HNO <sub>3</sub> , HCl, H <sub>2</sub> O <sub>2</sub> , HBF <sub>4</sub>

\*2: If the result of spot test is positive, Chromium VI would be determined as detected.

End of Report

Test Conducted

Photo







Test Report

Number : TWNC00268059

Applicant: Littelfuse Philippines Inc.  
LIMA Technology Center, Lipa City,  
Malvar, Batangas

Date : Jul 27, 2012

Sample Description:

One (1) group of submitted samples said to be :  
Part Description : Aluminum Material  
Date Sample Received : Jul 20, 2012  
Date Test Started : Jul 21, 2012

Test Conducted :

As requested by the applicant, for details please refer to attached pages.

Authorized By:  
On Behalf Of Intertek Testing Services  
Taiwan Limited



K. Y. Liang  
Director

This report shall not be reproduced  
except in full, without the written  
approval of the laboratory.

Test Conducted

## ( I ) Test Result Summary :

<u>Test Item</u>	<u>Result (ppm)</u>
	<u>Silvery Metal</u>
<b>Heavy Metal</b>	
Cadmium (Cd) content	ND
Lead (Pb) content	14
Mercury (Hg) content	ND
Chromium VI (Cr <sup>6+</sup> ) content (mg/kg with 50cm <sup>2</sup> )	Negative (< 0.02)

Remarks: ppm = Parts per million based on weight of tested sample = mg/kg  
ND = Not detected  
< = Less than  
mg/kg with 50cm<sup>2</sup> = milligram per kilogram with 50 square centimetre  
Negative = A negative test result indicated positive observation  
was not found at the time of Test.

Responsibility of Chemist : Irene Chiou / Kevin Liu / Cathy Chen

Date Sample Received : Jul 20, 2012

Test Period : Jul 21, 2012 To Jul 27, 2012

## ( II ) RoHS Limits:

<u>Restricted Substances</u>	<u>Limits</u>
Cadmium (Cd) Content	0.01% (100ppm)
Lead (Pb) Content	0.1% (1000ppm)
Mercury (Hg) Content	0.1% (1000ppm)
Chromium VI (Cr <sup>6+</sup> ) Content	0.1% (1000ppm)

The above limits were quoted from Annex II of 2011/65/EU for homogeneous material.

Test Conducted

( III ) Test Method:

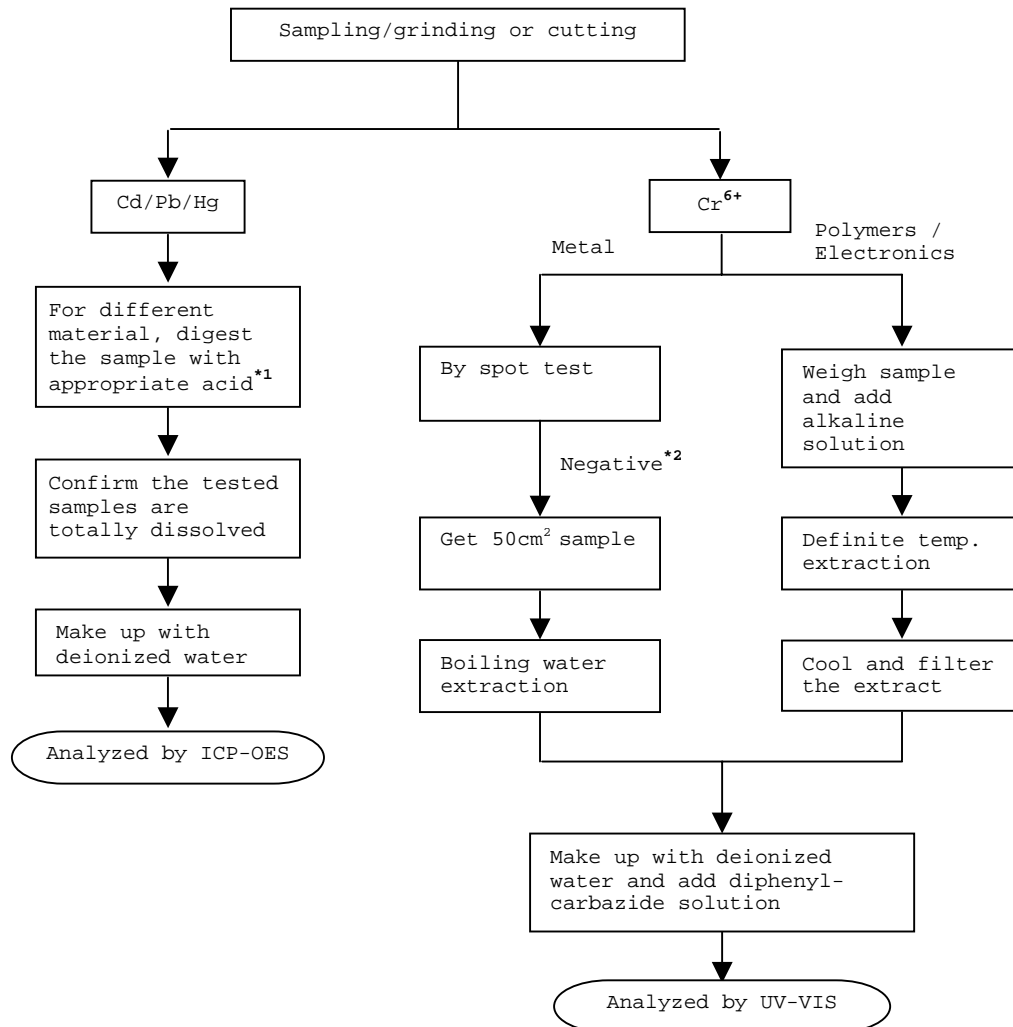
<u>Test Item</u>	<u>Test Method</u>	<u>Reporting Limit</u>
Cadmium (Cd) content	With reference to IEC 62321 edition 1.0:2008 in clause 8/9/10, by microwave digestion until the tested samples are totally dissolved and determined by ICP-OES.	2 ppm
Lead (Pb) content	With reference to IEC 62321 edition 1.0:2008 in clause 8/9/10, by microwave digestion until the tested samples are totally dissolved and determined by ICP-OES.	2 ppm
Mercury (Hg) content	With reference to IEC 62321 edition 1.0:2008 in clause 7, by microwave digestion until the tested samples are totally dissolved and determined by ICP-OES.	2 ppm
Chromium VI (Cr <sup>6+</sup> ) content	With reference to IEC 62321 edition 1.0:2008 in annex B, by boiling water extraction and determined by UV-Vis Spectrophotometer.	0.02 mg/kg with 50cm <sup>2</sup>

Remark: Reporting limit = Quantitation limit of analyte in sample

Test Conducted

(IV) Measurement Flowchart:

Test For Cd/Pb/Hg/Chromium (VI)  
 Reference Standard : IEC 62321 edition 1.0:2008





Number : TWNC00268059

Test Conducted

Remarks:

\*1: List Of Appropriate Acid:

<u>Material</u>	<u>Acid Added For Digestion</u>
Polymers	HNO <sub>3</sub> , HCl, HF, H <sub>2</sub> O <sub>2</sub> , H <sub>3</sub> BO <sub>3</sub>
Metals	HNO <sub>3</sub> , HCl, HF
Electronics	HNO <sub>3</sub> , HCl, H <sub>2</sub> O <sub>2</sub> , HBF <sub>4</sub>

\*2: If the result of spot test is positive, Chromium VI would be determined as detected.

End of Report

*This report is made solely on the basis of your instructions and/or information and materials supplied by you. It is not intended to be a recommendation for any particular course of action. Intertek does not accept a duty of care or any other responsibility to any person other than the Client in respect of this report and only accepts liability to the Client insofar as is expressly contained in the terms and conditions governing Intertek's provision of services to you. Intertek makes no warranties or representations either express or implied with respect to this report save as provided for in those terms and conditions. We have aimed to conduct the Review on a diligent and careful basis and we do not accept any liability to you for any loss arising out of or in connection with this report, in contract, tort, by statute or otherwise, except in the event of our gross negligence or wilful misconduct.*

Test Conducted

Photo





**Test Report**

Number : TWNC00238070

Applicant: Littelfuse, Philippines Inc.  
LIMA Technology Center, Lipa City,  
Malvar, Batangas

Date : Dec 27, 2011

Sample Description:

One (1) group of submitted samples said to be :  
Part Description : Neon Lamp sub-assay  
Date Sample Received : Dec 22, 2011  
Date Test Started : Dec 22, 2011

---

Test Conducted :

As requested by the applicant, for details please refer to attached pages.

---

Authorized By:  
On Behalf Of Intertek Testing Services  
Taiwan Limited



---

K. Y. Liang  
Director

This report shall not be reproduced  
except in full, without the written  
approval of the laboratory.



Number : TWNC00238070

Test Conducted

( I ) Test Result Summary :

Test Item	Result (ppm)	
	(1)	(2)
<b>Heavy Metal</b>		
Cadmium (Cd) content	ND	ND
Lead (Pb) content	78	ND
Mercury (Hg) content	ND	ND
Chromium VI (Cr <sup>6+</sup> ) content (for non-metal material)	ND	ND
Chromium VI (Cr <sup>6+</sup> ) content (by boiling water extraction on metal)(mg/kg with 50cm <sup>2</sup> )	--	--
<b>Polybrominated Biphenyls (PBBs)</b>		
Monobrominated Biphenyls (MonoBB)	ND	ND
Dibrominated Biphenyls (DiBB)	ND	ND
Tribrominated Biphenyls (TriBB)	ND	ND
Tetrabrominated Biphenyls (TetraBB)	ND	ND
Pentabrominated Biphenyls (PentaBB)	ND	ND
Hexabrominated Biphenyls (HexaBB)	ND	ND
Heptabrominated Biphenyls (HeptaBB)	ND	ND
Octabrominated Biphenyls (OctaBB)	ND	ND
Nonabrominated Biphenyls (NonaBB)	ND	ND
Decabrominated Biphenyl (DecaBB)	ND	ND
<b>Polybrominated Diphenyl Ethers (PBDEs)</b>		
Monobrominated Diphenyl Ethers (MonoBDE)	ND	ND
Dibrominated Diphenyl Ethers (DiBDE)	ND	ND
Tribrominated Diphenyl Ethers (TriBDE)	ND	ND
Tetrabrominated Diphenyl Ethers (TetraBDE)	ND	ND
Pentabrominated Diphenyl Ethers (PentaBDE)	ND	ND
Hexabrominated Diphenyl Ethers (HexaBDE)	ND	ND
Heptabrominated Diphenyl Ethers (HeptaBDE)	ND	ND
Octabrominated Diphenyl Ethers (OctaBDE)	ND	ND
Nonabrominated Diphenyl Ethers (NonaBDE)	ND	ND
Decabrominated Diphenyl Ether (DecaBDE)	ND	ND
<b>Halogen Content</b>		
Fluorine (F)	ND	ND
Chlorine (Cl)	ND	ND
Bromine (Br)	ND	ND
Iodine (I)	ND	ND
<b>Phthalates</b>		
Di(2-ethylhexyl) Phthalate (DEHP)	--	--
Dibutyl Phthalate (DBP)	--	--
Benzyl Butyl Phthalate (BBP)	--	--
<b>Others</b>		
Hexabromocyclododecane (HBCDD)	--	--





Number : TWNC00238070

Test Conducted

( I ) Test Result Summary :

Test Item	Result (ppm)	
	(3)	(4)
<b>Heavy Metal</b>		
Cadmium (Cd) content	ND	ND
Lead (Pb) content	ND	ND
Mercury (Hg) content	ND	ND
Chromium VI (Cr <sup>6+</sup> ) content (for non-metal material)	ND	ND
Chromium VI (Cr <sup>6+</sup> ) content (by boiling water extraction on metal)(mg/kg with 50cm <sup>2</sup> )	--	Negative (<0.02) (#)
<b>Polybrominated Biphenyls (PBBs)</b>		
Monobrominated Biphenyls (MonoBB)	ND	--
Dibrominated Biphenyls (DiBB)	ND	--
Tribrominated Biphenyls (TriBB)	ND	--
Tetrabrominated Biphenyls (TetraBB)	ND	--
Pentabrominated Biphenyls (PentaBB)	ND	--
Hexabrominated Biphenyls (HexaBB)	ND	--
Heptabrominated Biphenyls (HeptaBB)	ND	--
Octabrominated Biphenyls (OctaBB)	ND	--
Nonabrominated Biphenyls (NonaBB)	ND	--
Decabrominated Biphenyl (DecaBB)	ND	--
<b>Polybrominated Diphenyl Ethers (PBDEs)</b>		
Monobrominated Diphenyl Ethers (MonoBDE)	ND	--
Dibrominated Diphenyl Ethers (DiBDE)	ND	--
Tribrominated Diphenyl Ethers (TriBDE)	ND	--
Tetrabrominated Diphenyl Ethers (TetraBDE)	ND	--
Pentabrominated Diphenyl Ethers (PentaBDE)	ND	--
Hexabrominated Diphenyl Ethers (HexaBDE)	ND	--
Heptabrominated Diphenyl Ethers (HeptaBDE)	ND	--
Octabrominated Diphenyl Ethers (OctaBDE)	ND	--
Nonabrominated Diphenyl Ethers (NonaBDE)	ND	--
Decabrominated Diphenyl Ether (DecaBDE)	ND	--
<b>Halogen Content</b>		
Fluorine (F)	ND	--
Chlorine (Cl)	272199	--
Bromine (Br)	2257	--
Iodine (I)	ND	--



Number : TWNC00238070

Test Conducted

( I ) Test Result Summary :

<u>Test Item</u>	<u>Result (ppm)</u>	
	<u>(3)</u>	<u>(4)</u>
<b>Phthalates</b>		
Di(2-ethylhexyl) Phthalate (DEHP)	ND	--
Dibutyl Phthalate (DBP)	ND	--
Benzyl Butyl Phthalate (BBP)	ND	--
<b>Others</b>		
Hexabromocyclododecane (HBCDD)	ND	--

Remarks: ppm = Parts per million based on weight of tested sample = mg/kg  
 ND = Not detected  
 < = Less than  
 mg/kg with 50cm<sup>2</sup> = milligram per kilogram with 50 square centimetre  
 Negative = A negative test result indicated positive observation was not found at the time of Test.  
 # = Due to the insufficient sample area, reduced total sample surface of 10 cm<sup>2</sup> was used and the dilution factor was adjusted accordingly.

Responsibility of Chemist : Irene Chiou / Kevin Liu / Cathy Chen

Date Sample Received : Dec 22, 2011

Test Period : Dec 22, 2011 To Dec 27, 2011

( II ) RoHS Requirement:

<u>Restricted Substances</u>	<u>Limits</u>
Cadmium (Cd) Content	0.01% (100ppm)
Lead (Pb) Content	0.1% (1000ppm)
Mercury (Hg) Content	0.1% (1000ppm)
Chromium VI (Cr <sup>6+</sup> ) Content	0.1% (1000ppm)
Polybrominated Biphenyls (PBBs)	0.1% (1000ppm)
Polybrominated Diphenyl Ehters (PBDEs)	0.1% (1000ppm)

The above limits were quoted from 2002/95/EC and amendment 2005/618/EC for homogeneous material.



Number : TWNC00238070

Test Conducted  
( III ) Test Method:

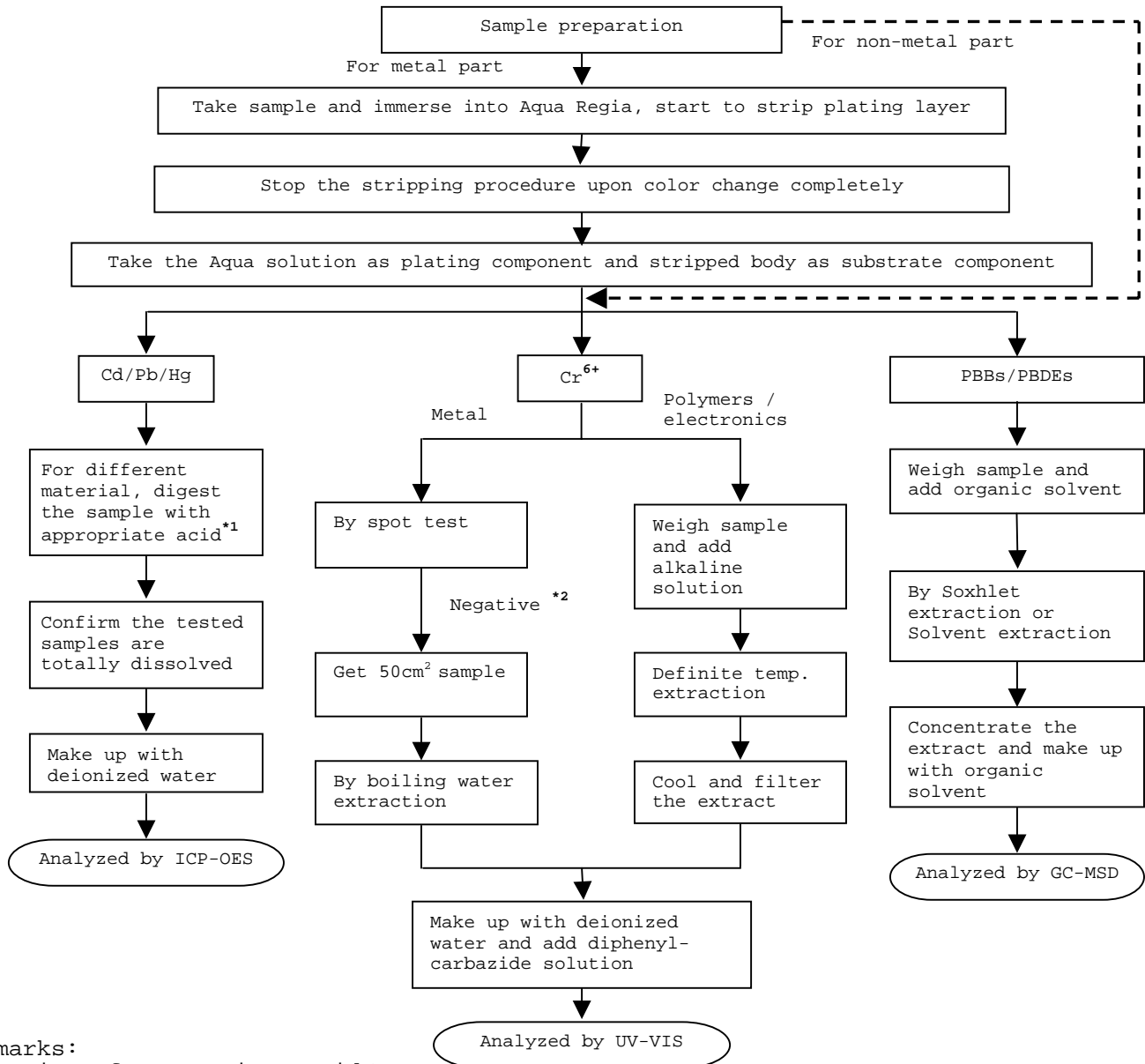
<u>Test Item</u>	<u>Test Method</u>	<u>Reporting Limit</u>
Cadmium (Cd) content	With reference to IEC 62321 edition 1.0:2008 in clause 8/9/10, by microwave digestion until the tested samples are totally dissolved and determined by ICP-OES.	2 ppm
Lead (Pb) content	With reference to IEC 62321 edition 1.0:2008 in clause 8/9/10, by microwave digestion until the tested samples are totally dissolved and determined by ICP-OES.	2 ppm
Mercury (Hg) content	With reference to IEC 62321 edition 1.0:2008 in clause 7, by microwave digestion until the tested samples are totally dissolved and determined by ICP-OES.	2 ppm
Chromium VI (Cr <sup>6+</sup> ) content (for non-metal material)	With reference to IEC 62321 edition 1.0:2008 in annex C, by alkaline digestion and determined by UV-Vis spectrophotometer.	1 ppm
Chromium VI (Cr <sup>6+</sup> ) content (by boiling water extraction on metal)(mg/kg with 50cm <sup>2</sup> )	With reference to IEC 62321 edition 1.0:2008 in annex B, by boiling water extraction and determined by UV-Vis Spectrophotometer.	0.02 mg/kg with 50cm <sup>2</sup>
Polybrominated Biphenyls (PBBs)	With reference to IEC 62321 edition 1.0:2008 in annex A, by solvent extraction and determined by GC-MS and further HPLC-DAD confirmation when necessary.	5 ppm
Polybrominated Diphenyl Ethers (PBDEs)	With reference to IEC 62321 edition 1.0:2008 in annex A, by solvent extraction and determined by GC-MS and further HPLC-DAD confirmation when necessary.	5 ppm
Halogen Content	With reference to EN 14582:2007 by calorimetric bomb with oxygen and determined by Ion Chromatograph.	50 ppm
Phthalates	With reference to EN 14372: 2004, by solvent extraction and determined by GC-MSD	50 ppm
Hexabromocyclododecane (HBCDD)	With reference to USEPA 3540C, by solvent extraction and determined by GC-MSD	10 ppm

Remark: Reporting limit = Quantitation limit of analyte in sample

Test Conducted

(IV) Measurement Flowchart:

Test for Cd/Pb/Hg/Chromium (VI)/PBBS/PBDES Contents  
Reference Standard: IEC 62321 edition 1.0:2008



Remarks:

\*1: List of Appropriate Acid:

Material	Acid Added for Digestion
Polymers	HNO <sub>3</sub> , HCl, HF, H <sub>2</sub> O <sub>2</sub> , H <sub>3</sub> BO <sub>3</sub>
Metals	HNO <sub>3</sub> , HCl, HF
Electronics	HNO <sub>3</sub> , HCl, H <sub>2</sub> O <sub>2</sub> , HBF <sub>4</sub>

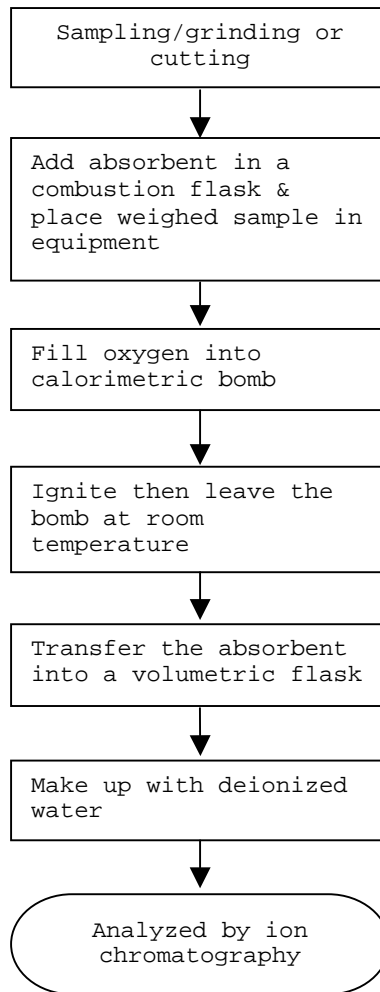
\*2: If the result of spot test is positive, Chromium VI would be determined as detected.

Test Conducted

(IV) Measurement Flowchart:

Test for Halogen Content

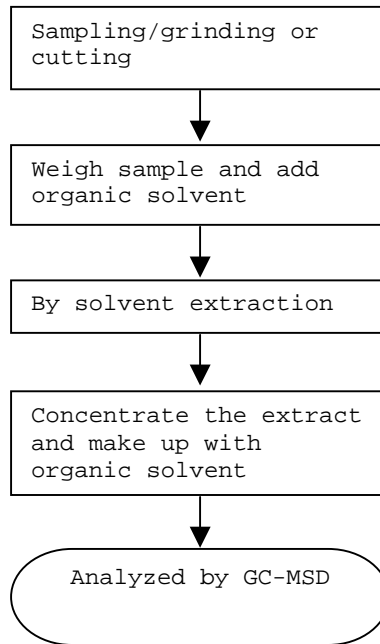
Reference Standard : EN 14582



Test Conducted

(IV) Measurement Flowchart:

Test For Phthalates Contents  
Reference Method: EN 14372: 2004

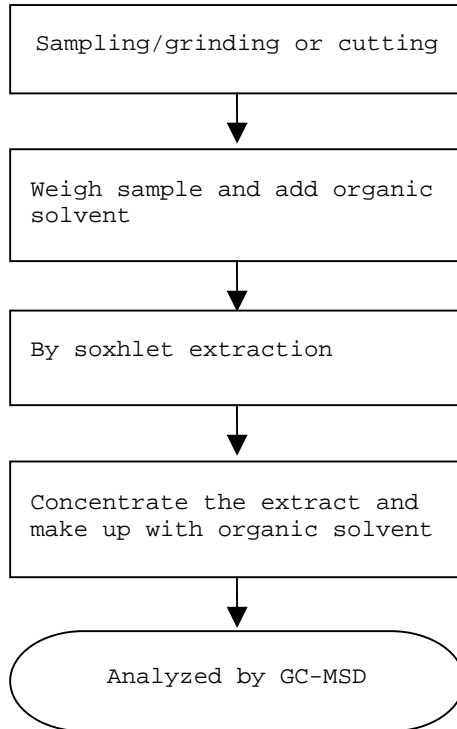


Test Conducted

(IV) Measurement Flowchart:

Test For Hexabromocyclododecane (HBCDD)

Reference Standard : USEPA 3540C





Number : TWNC00238070

Tested Components:

- (1) Lamp (Mixed All Parts)
- (2) Blue Resistor With Golden/Yellow/Red/Green Printing (Mixed All Parts)
- (3) Black Cable Jacket With White Printing
- (4) Silvery Metal Wire

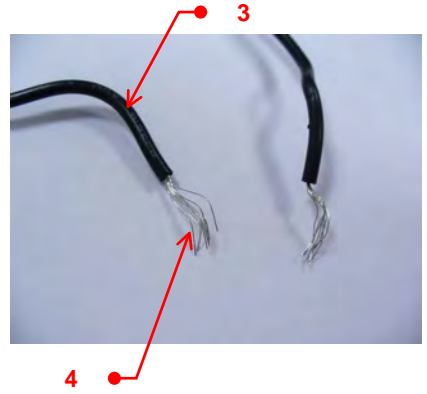
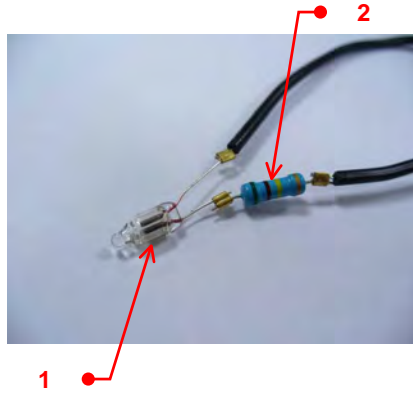
---

End of Report



Test Conducted

Photo



## 测试报告

No. CANEC1200272902

日期: 2012年01月13日

第1页,共4页

东莞市携辉电子有限公司  
中国东莞市长安镇上沙华丽路43号

以下测试之样品是由申请者所提供及确认: H65铜带

SGS工作编号: CP12-000694 - GZ

主要成分: 铜, 锌

样品接收日期: 2012年01月10日

测试周期: 2012年01月10日 - 2012年01月13日

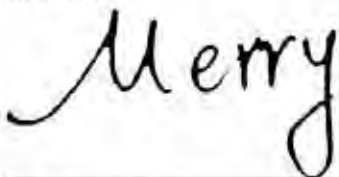
测试要求: 根据客户要求测试

测试方法: 请参见下一页

测试结果: 请参见下一页

结论: 基于所送样品进行的测试, 镉、铅、汞、六价铬的测试结果符合欧盟RoHS指令2002/95/EC的重订指令2011/65/EU附录II的限值要求。

通标标准技术服务有限公司  
授权签名



Merry Lv 吕爱凤  
批准签署人

This document is issued by the Company subject to its General Conditions of Service printed overleaf, available on request or accessible at [http://www.sgs.com/terms\\_and\\_conditions.htm](http://www.sgs.com/terms_and_conditions.htm) and/or electronic format documents subject to Terms and Conditions for Electronic Documents at [www.sgs.com/terms\\_e-document.htm](http://www.sgs.com/terms_e-document.htm). Attention is drawn to the limitation of liability, jurisdiction and jurisdiction issues defined therein. Any holder of this document is advised that information contained herein reflects the Company's findings at the time of its issue and is not intended to be used within the limits of Client's instructions, if any. The Company's sole responsibility is to its Client and this document does not exonerate parties to a transaction from exercising all their rights and obligations under the transaction documents. This document cannot be reproduced except in full, without prior written approval of the Company. Any unauthorized alteration, forgery or falsification of the content or appearance of this document is unlawful and offenders may be prosecuted to the fullest extent of the law. Values of results stated in this test report refer only to the sample(s) tested.



## 测试报告

No. CANEC1200272902

日期: 2012年01月13日 第2页,共4页

测试结果:

样品部件外观描述:

样品编号	SGS样品ID	描述
1	CAN12-002729.001	黄铜色金属片

备注:

- (1) 1 mg/kg = 1 ppm = 0.0001%
- (2) MDL = 方法检测限
- (3) ND = 未检出 (< MDL)
- (4) "-" = 未规定

### RoHS指令2011/65/EU

测试方法: 参考IEC 62321:2008:

- (1)用ICP-OES测定镉的含量.
- (2)用ICP-OES测定铅的含量.
- (3)用ICP-OES测定汞的含量.
- (4)用点测试法/紫外-可见分光光度计比色法测定六价格的含量.

测试项目	限值	单位	MDL	001
镉(Cd)	100	mg/kg	2	ND
铅(Pb)	1,000	mg/kg	2	22
汞(Hg)	1,000	mg/kg	2	ND
六价格(Cr(VI))	-	-	◇	Negative

备注:

- (1) 最大允许极限值引用自指令2011/65/EU附录II.
- (2) ◇ = a. Negative为未检测到六价格;  
b. Positive 为检测到六价格.

针对金属表面的防腐涂层: 由于未获知样品的存储条件和生产日期, 样品的六价格测试结果仅代表测试时样品的状态.

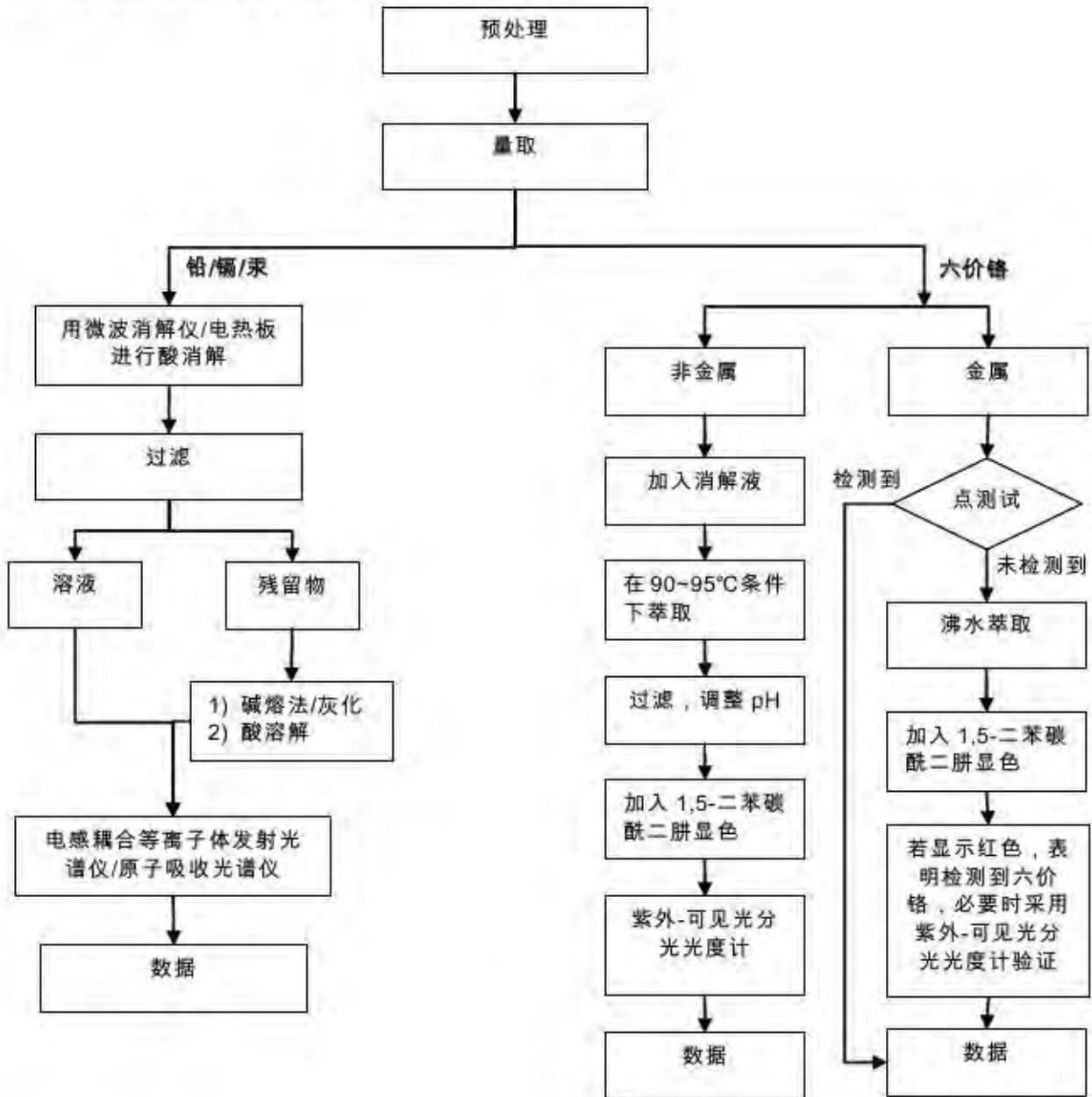
备注: 本测试报告内容是参照报告编号为CANEC1200272901的中文译本, 中英文版本如有歧异, 概以英文版为准.



附件

## RoHS 测试流程图

- 1) 分析人员: 汪丹 / 詹达琦
- 2) 项目负责人: 余奕东
- 3) 样品按照下述流程被完全消解 (六价铬测试除外)。



This document is issued by the Company subject to its General Conditions of Service printed hereover, available on request or accessible at [http://www.sgs.com/terms\\_and\\_conditions](http://www.sgs.com/terms_and_conditions) and for electronic format documents, subject to Terms and Conditions for Electronic Documents at [www.sgs.com/terms\\_e-document.htm](http://www.sgs.com/terms_e-document.htm). Attention is drawn to the limitation of liability, jurisdiction and (jurisdiction) as defined therein. Any holder of this document is advised that information contained herein reflects the Company's findings at the time of its preparation and, within the limits of Client's instructions, if any, the Company's sole responsibility is to its Client and this document does not constitute a warranty or a contract. Any unauthorized alteration, forgery or falsification of the content or appearance of this document is unlawful and offenders may be prosecuted to the fullest extent of the law. Values obtained in this test report refer only to the sample(s) tested.





样品照片:



此照片仅限于随SGS正本报告使用

\*\*\* 报告完 \*\*\*

This document is issued by the Company subject to its General Conditions of Service printed overleaf, available on request or accessible at [http://www.sgs.com/terms\\_and\\_conditions.htm](http://www.sgs.com/terms_and_conditions.htm) and, for electronic format documents, subject to Terms and Conditions for Electronic Documents at [www.sgs.com/terms\\_e-document.htm](http://www.sgs.com/terms_e-document.htm). Attention is drawn to the limitation of liability, indemnification and jurisdiction issues defined therein. Any holder of this document is advised that information contained herein reflects the Company's findings at the time of its inspection and only within the limits of Client's instructions, if any. The Company's sole responsibility is to its Client and this document does not exonerate parties to a transaction from exercising all their rights and obligations under the transaction documents. This document cannot be reproduced in full, without prior written approval of the Company. Any unauthorized alteration, forgery or falsification of the content or appearance of this document is unlawful and offenders may be prosecuted to the fullest extent of the law. Unless otherwise stated, the results shown in this test report refer only to the sample(s) tested.



# Test Report

Report No. RLNBE000088420001

Page 1 of 4

**Applicant** YUEQING DONGFENG FASTENERS COMPANY

**Address** NO528,SOUTH STREET,BEIBAIXIANG TOWN,YUEQING CITY, ZHEJIANG PROVINCE,CHINA.

**The following sample(s) and sample information was/were submitted and identified by/on the behalf of the client**

Sample Name Steel  
Sample Received Date Jul. 2, 2012  
Testing Period Jul. 2, 2012 to Jul. 5, 2012

**Test Requested** As specified by client, to test Lead(Pb), Cadmium(Cd), Mercury(Hg), Hexavalent Chromium(Cr(VI)) in the submitted sample(s).

**Test Method**

Test Item(s)	Test Method	Measured Equipment(s)	MDL
Lead(Pb)	IEC 62321:2008 Ed.1 Sec.9	ICP-OES	2 mg/kg
Cadmium(Cd)	IEC 62321:2008 Ed.1 Sec.9	ICP-OES	2 mg/kg
Mercury(Hg)	IEC 62321:2008 Ed.1 Sec.7	ICP-OES	2 mg/kg
Hexavalent Chromium(Cr(VI))	IEC 62321:2008 Ed.1 Annex B	UV-Vis	/

**Test Result(s)** Please refer to the following page(s).

Tested by

*Sha Chen*

Reviewed by

*Wei Miao*

Approved by

*Chen Qian*

Date

Jul. 5, 2012

Chen Qian

Approved Signatory

No. 13431686

Centre Testing International(Ningbo)Co.,Ltd. 7-8/F.,Building A,No.750.Chuangyuan Road,Gaoxin District,Ningbo,Zhengjiang,China

# Test Report

Report No. RLNBE000088420001

Page 2 of 4

**Test Result(s)**

Tested Item(s)	Content
Lead(Pb)	N.D.
Cadmium(Cd)	N.D.
Mercury(Hg)	N.D.
Tested Item(s)	Conclusion
Hexavalent Chromium(Cr(VI))	Negative

**Tested Sample/Part Description** Metal with silver-grey cover layer

**Note:** The sample had been dissolved totally tested for Lead, Cadmium, Mercury.  
 -MDL = Method Detection Limit  
 -N.D. = Not Detected (<MDL )  
 -mg/kg = ppm = parts per million  
 -Negative = Absence of Cr(VI) , the detected Cr(VI) concentration in the boiling water extraction solution is less than 0.02 mg/kg with 50cm<sup>2</sup> sample surface area used.



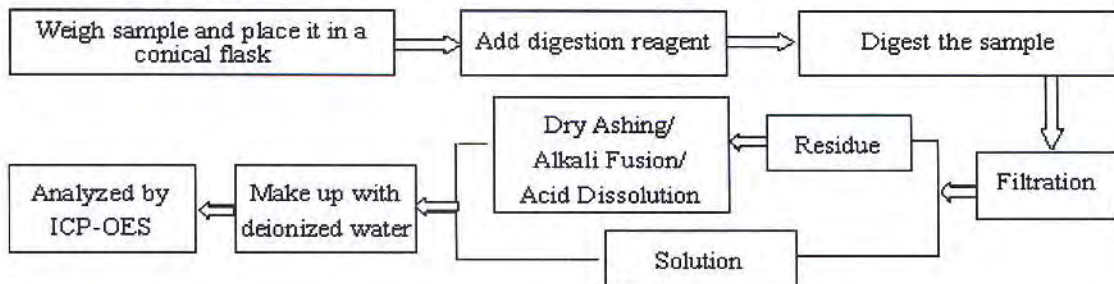
# Test Report

Report No. RLNBE000088420001

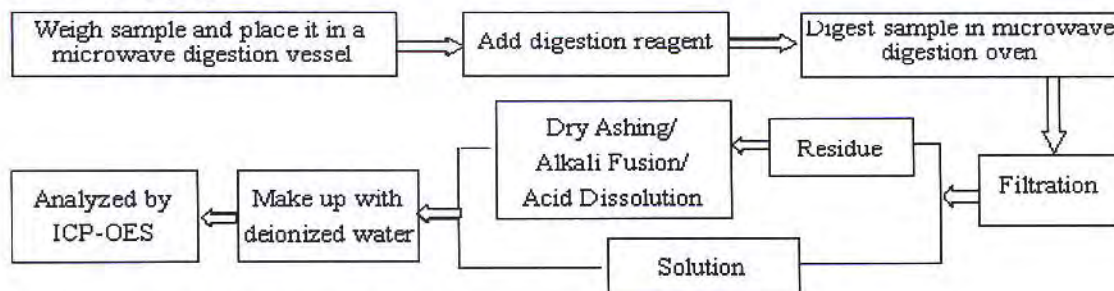
Page 3 of 4

## Test Process

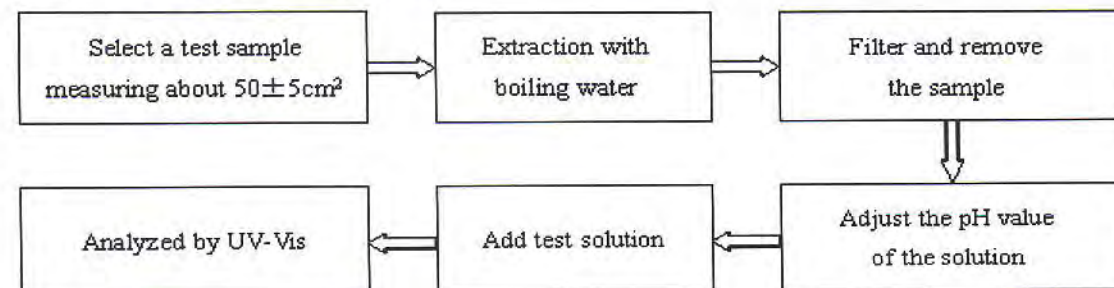
### 1. Lead(Pb), Cadmium(Cd)



### 2. Mercury(Hg)



### 3. Hexavalent Chromium(Cr(VI))



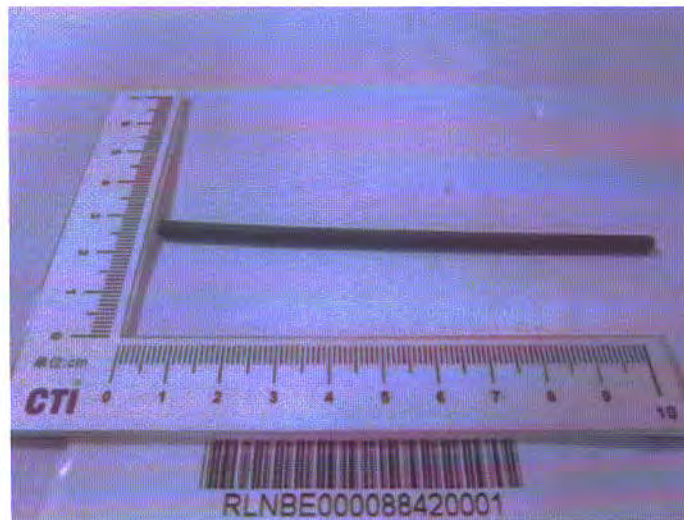


# Test Report

Report No. RLNBE000088420001

Page 4 of 4

## Photo(s) of the sample(s)



\*\*\* End of report \*\*\*

The test report is effective only with both signature and specialized stamp. The result(s) shown in this report refer only to the sample(s) tested. Without written approval of CTI, this report can't be reproduced except in full.

# Test Report

Report No. RLNBE000088420002

Page 1 of 4

**Applicant** YUEQING DONGFENG FASTENERS COMPANY  
**Address** NO528,SOUTH STREET,BEIBAIXIANG TOWN,YUEQING CITY. ZHEJIANG PROVINCE,CHINA.

**The following sample(s) and sample information was/were submitted and identified by/on the behalf of the client**

Sample Name Zinc Plating  
Sample Received Date Jul. 2, 2012  
Testing Period Jul. 2, 2012 to Jul. 5, 2012

**Test Requested** As specified by client, to test Lead(Pb), Cadmium(Cd), Mercury(Hg), Hexavalent Chromium(Cr(VI)) in the plating of submitted sample(s).

**Test Method**

Test Item(s)	Test Method	Measured Equipment(s)	MDL
Lead(Pb)	Plating layer test method (In-house method) and IEC 62321:2008 Ed.1 Sec.9	ICP-OES	2 mg/kg
Cadmium(Cd)	Plating layer test method (In-house method) and IEC 62321:2008 Ed.1 Sec.9	ICP-OES	2 mg/kg
Mercury(Hg)	Plating layer test method (In-house method) and IEC 62321:2008 Ed.1 Sec.7	ICP-OES	2 mg/kg
Hexavalent Chromium(Cr(VI))	IEC 62321:2008 Ed.1 Annex B	UV-Vis	/

**Test Result(s)** Please refer to the following page(s).

Tested by

*Sha Chen*

Reviewed by

*Wei Miao*

Approved by

*Chen Qian*

Date

Jul. 5, 2012

Chen Qian

Approved Signatory

No. 13431686

Centre Testing International(Ningbo)Co.,ltd. 7-8/F.,Building A,No.750.Chuangyuan Road,Gaoxin District,Ningbo,Zhejiang,China

# Test Report

Report No. RLNBE000088420002

Page 2 of 4

## Test Result(s)

Tested Item(s)	Content
Lead(Pb)	N.D.
Cadmium(Cd)	N.D.
Mercury(Hg)	N.D.

Tested Item(s)	Conclusion
Hexavalent Chromium(Cr(VI))	Negative

**Tested Sample/Part Description** Light blue plating

**Note:** The washed plating had been dissolved totally tested for Lead, Cadmium, Mercury.  
-MDL = Method Detection Limit  
-N.D. = Not Detected (<MDL )  
-mg/kg = ppm = parts per million  
-Negative = Absence of Cr(VI) , the detected Cr(VI) concentration in the boiling water extraction solution is less than 0.02 mg/kg with 50cm<sup>2</sup> sample surface area used.



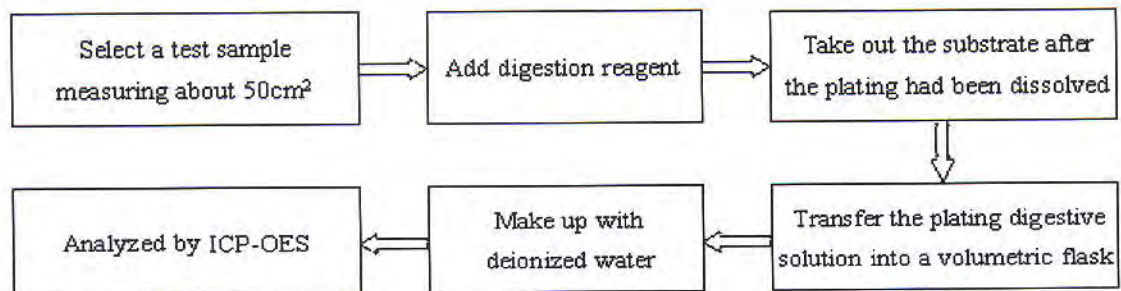
# Test Report

Report No. RLNBE000088420002

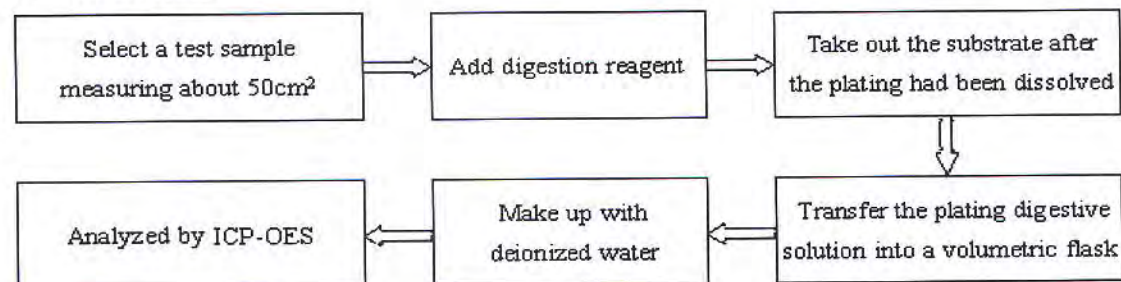
Page 3 of 4

## Test Process

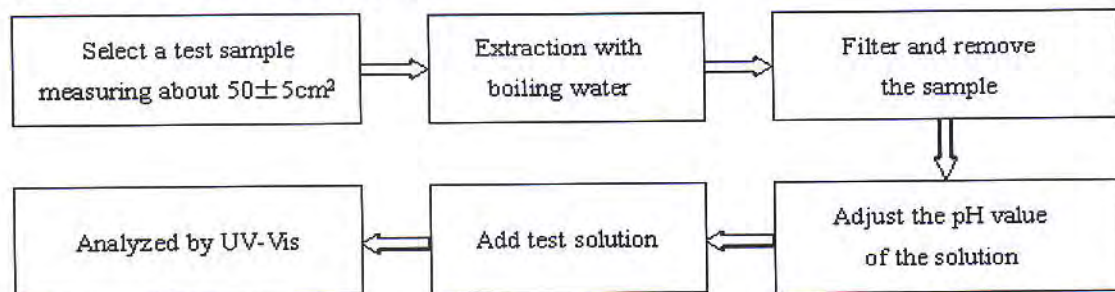
### 1. Lead(Pb), Cadmium(Cd)



### 2. Mercury(Hg)



### 3. Hexavalent Chromium(Cr(VI))



# Test Report

Report No. RLNBE000088420002

Page 4 of 4

## Photo(s) of the sample(s)



\*\*\* End of report \*\*\*

The test report is effective only with both signature and specialized stamp. The result(s) shown in this report refer only to the sample(s) tested. Without written approval of CTI, this report can't be reproduced except in full.

# Test Report

Report No. RLNBE000090170001

Page 1 of 4

**Applicant** YUEQING HUIFENG ELECTROPLATE FACTORY

**Address** NO528,XIANGTA WEST ROAD,BEIBAIXIANG TOWN,YUEQING CITY.  
ZHEJIANG PROVINCE,CHINA.

**The following sample(s) and sample information was/were submitted and identified by/on the behalf of the client**

Sample Name Tin Plating  
Sample Received Date Jul. 12, 2012  
Testing Period Jul. 12, 2012 to Jul. 14, 2012

**Test Requested** As specified by client, to test Lead(Pb), Cadmium(Cd), Mercury(Hg), Hexavalent Chromium(Cr(VI)) in the plating of submitted sample(s).

**Test Method**

Test Item(s)	Test Method	Measured Equipment(s)	MDL
Lead(Pb)	Plating layer test method (In-house method) and IEC 62321:2008 Ed.1 Sec.9	ICP-OES	2 mg/kg
Cadmium(Cd)	Plating layer test method (In-house method) and IEC 62321:2008 Ed.1 Sec.9	ICP-OES	2 mg/kg
Mercury(Hg)	IEC 62321:2008 Ed.1 Sec.7	ICP-OES	2 mg/kg
Hexavalent Chromium(Cr(VI))	IEC 62321:2008 Ed.1 Annex B	UV-Vis	/

**Test Result(s)** Please refer to the following page(s).

Tested by Sha Chen Reviewed by Wei Miao  
 Approved by Chen Qian Date Jul. 14, 2012  
 Chen Qian  
 Approved Signatory No. 13431669



Centre Testing International(Ningbo)Co.,ltd. 7-8/F.,Building A,No.750.Chuangyuan Road,Gaoxin District,Ningbo,Zhengjiang,China



# Test Report

Report No. RLNBE000090170001

Page 2 of 4

**Test Result(s)**

Tested Item(s)	Content
Lead(Pb)	258 mg/kg
Cadmium(Cd)	N.D.
Mercury(Hg)	N.D.

Tested Item(s)	Conclusion
Hexavalent Chromium(Cr(VI))	Negative

**Tested Sample/Part Description** Silvery plating

**Note:** The washed plating had been dissolved totally tested for Lead, Cadmium, Mercury.  
 -MDL = Method Detection Limit  
 -N.D. = Not Detected (<MDL )  
 -mg/kg = ppm = parts per million  
 -Negative = Absence of Cr(VI) , the detected Cr(VI) concentration in the boiling water extraction solution is less than 0.02 mg/kg with 50cm<sup>2</sup> sample surface area used.

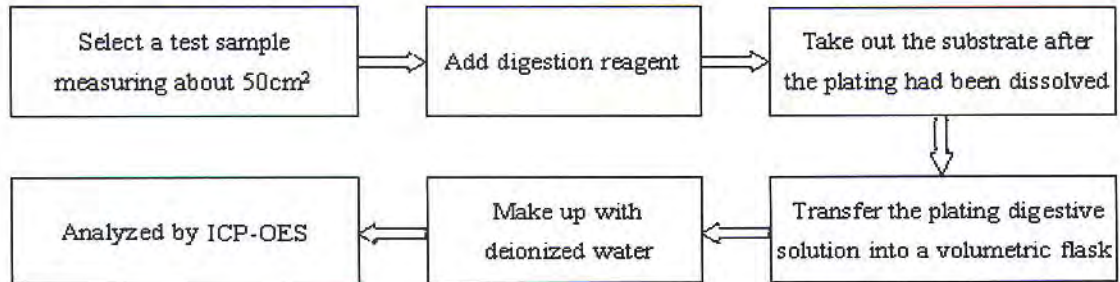
# Test Report

Report No. RLNBE000090170001

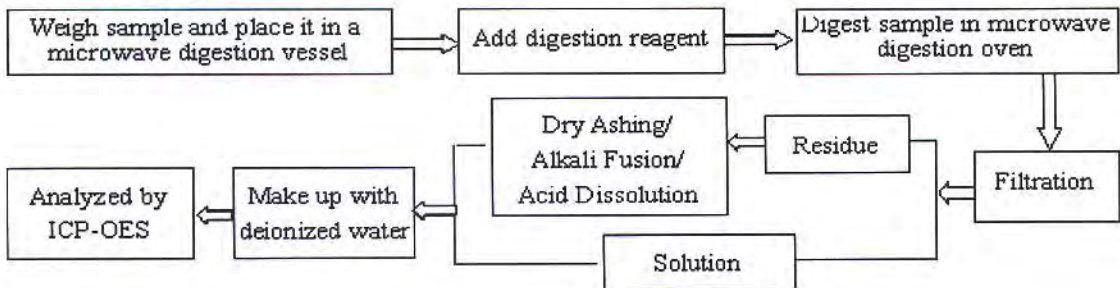
Page 3 of 4

## Test Process

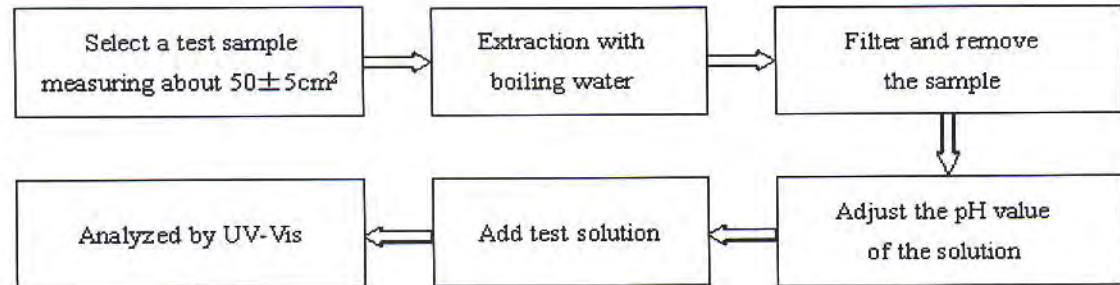
### 1. Lead(Pb), Cadmium(Cd)



### 2. Mercury(Hg)



### 3. Hexavalent Chromium(Cr(VI))



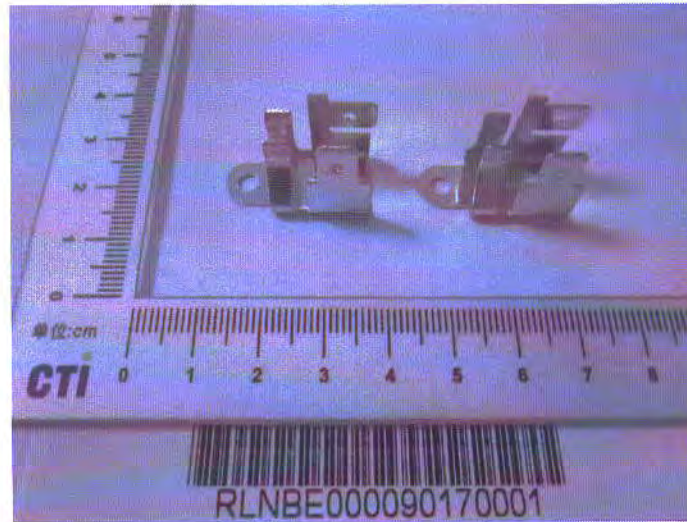


# Test Report

Report No. RLNBE000090170001

Page 4 of 4

## Photo(s) of the sample(s)



\*\*\* End of report \*\*\*

The test report is effective only with both signature and specialized stamp. The result(s) shown in this report refer only to the sample(s) tested. Without written approval of CTI, this report can't be reproduced except in full.