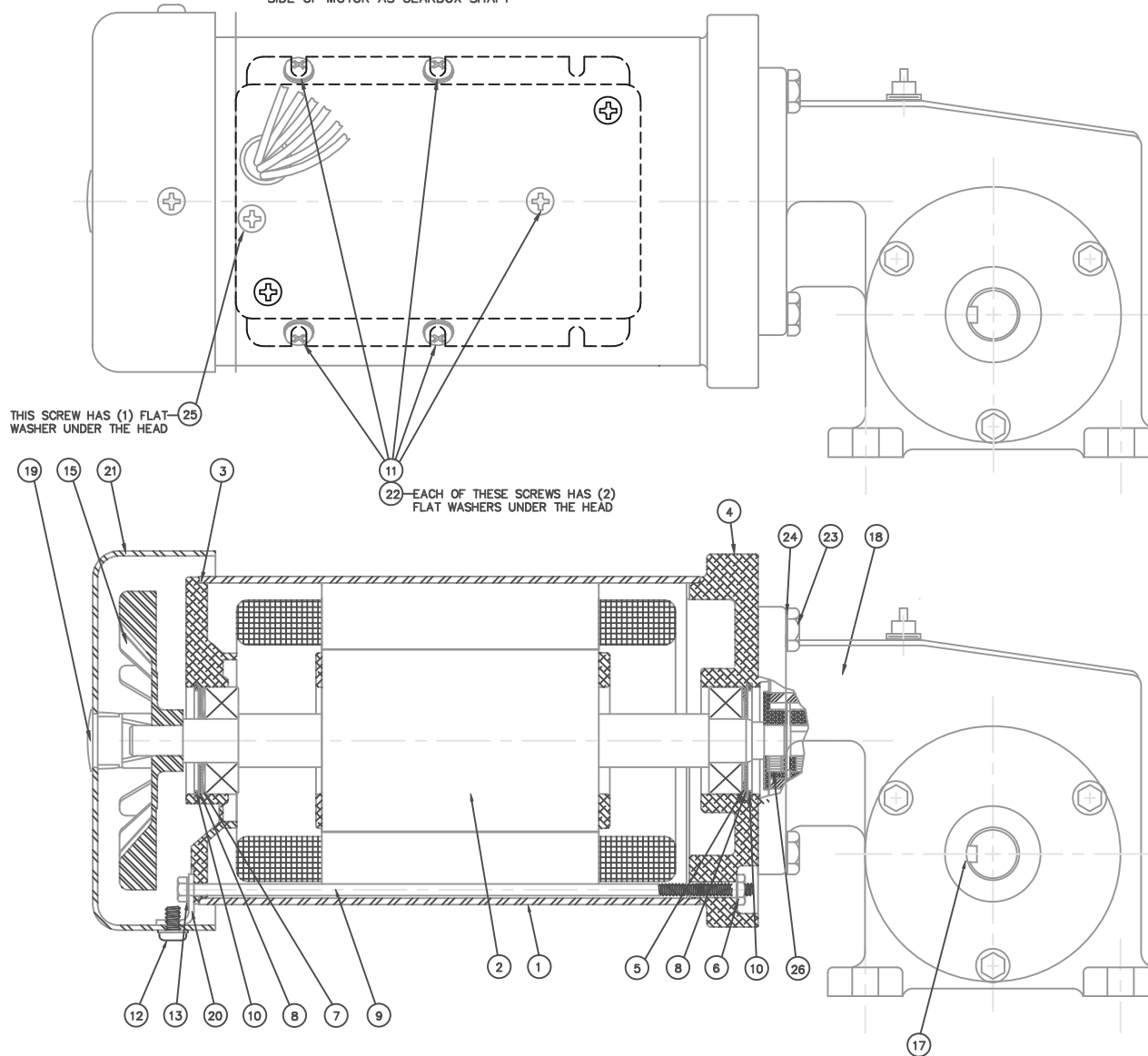
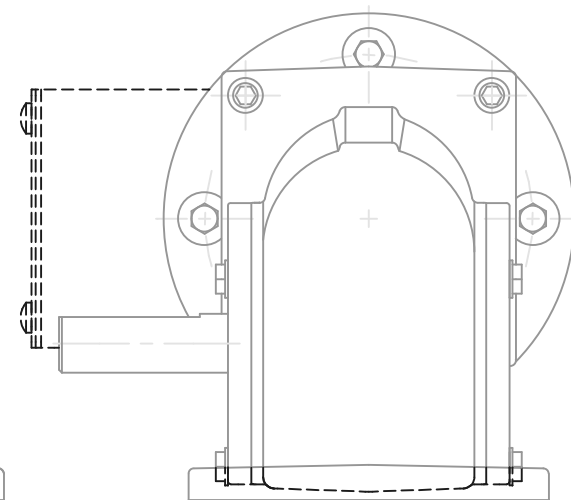


VIEW SHOWING CONDUIT BOX MOUNTING,
CAPACITOR MOUNTING, AND GROUND
SCREW LOCATION. ALL ARE ON SAME
SIDE OF MOTOR AS GEARBOX SHAFT



26	LOCTITE #242
25	8-32 X .38 PP ZPG
24	ITLW 1/4
23	1/4-20 X .88 H ZP
22	FLAT WASHER
21	FAN SHROUD
20	BRACKET
19	HOLE PLUG
18	RT. ANGLE GEARBOX
17	KEY 3/16 X 1.00
16	CAPACITOR
15	FAN
14	FW #8
13	ITLW #6
12	TFS 8-32 X .38 PP PO
11	TFS 8-32 X .25 PP ZP
10	RETAINING RING
9	6-32 THRU-BOLT
8	WASHER COVER
7	LOAD SPRING
6	HEX LOCK NUT
5	SHIM WASHER .030
4	ENDBELL MACHINED
3	ENDBELL MACHINED
2	ROTOR/SHAFT ASSEMBLY
1	FRAME/STATOR ASSEMBLY
ITEM	DESCRIPTION



CAUTION!
PRIOR TO ASSEMBLY OF GEARBOX TO MOTOR A COUPLING
HALF MUST BE ASSEMBLED TO MOTOR SHAFT WITH A SET
SCREW AND LOC-TITE. PUSH COUPLING HALF TO SHOULDER
ON SHAFT BEFORE TIGHTENING SET SCREW. PLACE DRIVE
RING ON ONE HALF OF COUPLING AND THEN ASSEMBLE
GEARBOX TO MOTOR.

06	RAISED REVISION TO MATCH ORACLE	SAD	9/8/99	TOLERANCES UNLESS OTHERWISE SPECIFIED	LEESON ELECTRIC CORPORATION	TITLE	GENERAL ASSEMBLY
05	RAISED REVISION TO MATCH ORACLE	SAD	9/8/99	DECIMALS			38 FR. AC GEARMOTOR
04	RAISED REVISION TO MATCH ORACLE	SAD	9/8/99				
03	CHANGED GEARBOX TO 3.30 SHAFT DESIGN	SAD	5/4/98	.00 ± .01	DRAWN DWF 3/14/95	CHK'D.	
02	GEAR SYSTEMS GEARBOX WAS HUB CITY GEARBOX	SAD	12/16/97	.000 ± .005	APPR.	MAT'L.	
01	ADDED FLAT WASHER UNDER GROUND SCREW	DWF	5/25/95	.0000 ± .0005	SCALE	1=1	
NO.	REVISION	BY	REV. DATE	FRACTIONS ± 1/64	REF.	FINISH	SIZE
THIS DRAWING IN DESIGN AND DETAIL IS OUR PROPERTY AND MUST NOT BE USED EXCEPT IN CONNECTION WITH OUR WORK ALL RIGHTS OF DESIGN OR INVENTION ARE RESERVED				ANGLES ± 1/2"	REF.	FINISH	DRAWING NO.
				INCH/MM	F/MF	M1146037.00	STOCK
							C
							M1040447.00