

Synthetic Single Jacket Mill Hose

Application:

- used in open end water discharge applications only, not intended for fire fighting service

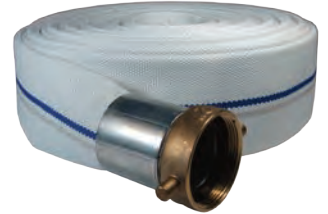


Features:

- outer construction: single jacket, all polyester
- tube construction: black, PVC rubber
- Consult Dixon for pricing and availability of additional lengths and other configurations.

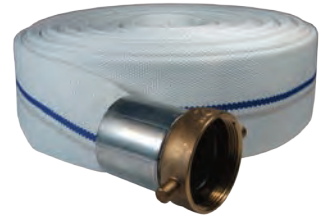
Coupled with NPSH female and male King short shank couplings, crimp sleeve, Aluminum shank with brass pin lug swivel nut

Size	Clamps per End	Length	Working Pressure PSI at 70°F	Part #	Price/E
1½"	2	25'	75	M15-25KAS	\$89.80
1½"	2	50'	75	M15-50KAS	150.00
2"	2	25'	75	M20-25KAS	115.00
2"	2	50'	75	M20-50KAS	179.30
2½"	2	25'	50	M25-25KAS	148.00
2½"	2	50'	50	M25-50KAS	230.30
3"	3	25'	50	M30-25KAS	185.50
3"	3	50'	50	M30-50KAS	279.75



Coupled with NST (NH) female and male King short shank couplings, crimp sleeve, Aluminum shank with brass pin lug swivel nut

Size	Clamps per End	Length	Working Pressure PSI at 70°F	Part #	Price/E
1½"	2	25'	75	M15-25KAF	\$107.00
1½"	2	50'	75	M15-50KAF	165.40
2½"	2	25'	50	M25-25KAF	168.50
2½"	2	50'	50	M25-50KAF	250.40



Coupled with female and male (C & E) global aluminum cam and groove, crimp sleeve

Size	Clamps per End	Length	Working Pressure PSI at 70°F	Part #	Price/E
1½"	2	25'	112	M15-25GAX	\$104.00
1½"	2	50'	112	M15-50GAX	162.30
2"	2	25'	112	M20-25GAX	136.00
2"	2	50'	112	M20-50GAX	199.40
2½"	2	25'	112	M25-25GAX	163.85
2½"	2	50'	112	M25-50GAX	245.75
3"	2	25'	112	M30-25GAX	188.55
3"	2	50'	112	M30-50GAX	284.40
4"	2	25'	112	M40-25GAX	275.10
4"	2	50'	112	M40-50GAX	434.30



P

Consult Dixon for pricing and availability for any of the following options:

- additional lengths
- other configurations