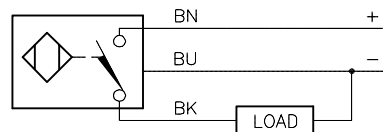


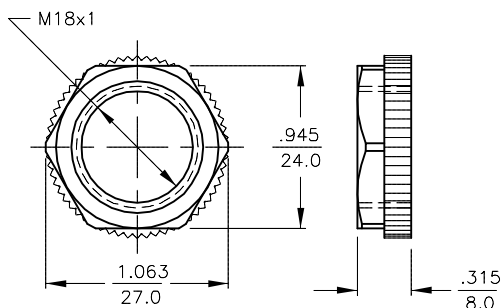
WIRING DIAGRAM



OUTPUT: AP6X2

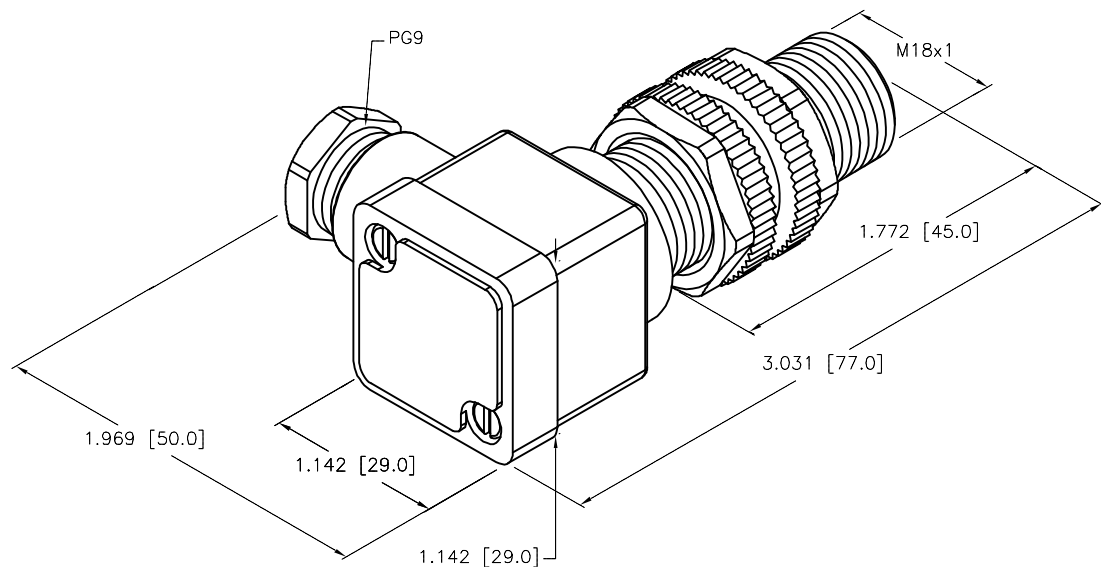
SHORT-CIRCUIT AND OVERLOAD PROTECTED

LOCKNUT LN-P18

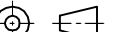


SPECIFICATIONS

RATED OPERATING DISTANCE	10mm [.394]
MOUNTING MODE	NON-FLUSH
TEMPERATURE DRIFT	$\leq \pm 10\%$
HYSTERSIS	3-15%
MIN. REPEAT ACCURACY	$\leq 2\%$
OPERATING TEMPERATURE	-25°C to +70°C (-13°F to +158°F)
OPERATING VOLTAGE	10-30 VDC
DC RATED OPERATIONAL CURRENT	≤ 200 mA
NO-LOAD CURRENT	≤ 15.0 mA
RESIDUAL CURRENT	≤ 0.1 mA
RATED INSULATION VOLTAGE	≤ 0.5 kV
SHORT-CIRCUIT PROTECTION	YES
MAX. VOLTAGE DROP	≤ 1.8 V
WIRE BREAKAGE PROTECTION	INCORPORATED
REVERSE POLARITY PROTECTION	INCORPORATED
OUTPUT FUNCTION	3-WIRE, NORMALLY OPEN, PNP
SWITCHING FREQUENCY	≤ 0.5 kHz
HOUSING MATERIAL	PLASTIC, PA
TERMINAL CHAMBER COVER MATERIAL	PLASTIC, ULTEM
TERMINAL CHAMBER HOUSING MATERIAL	PLASTIC, PA12-GF20
ACTIVE FACE MATERIAL	PLASTIC, PA
CONNECTION	TERMINAL CHAMBER
VIBRATION RESISTANCE	55 Hz (IN ALL 3 PLANES)
SHOCK RESISTANCE	30 g, 11 ms
PROTECTION DEGREE	IP67
SWITCHING STATUS INDICATION	LED; YELLOW



SOURCE DRAWING - FOR REFERENCE ONLY

RELATED DOCUMENTS 1. 2. 3. 4.	3RD ANGLE PROJECTION 	THIS DRAWING IS CONFIDENTIAL AND THE PROPERTY OF TURCK INC. USE OF THIS DOCUMENT WITHOUT WRITTEN PERMISSION IS PROHIBITED.		<div>TURCK INC</div> <div>High Technology Sensors and Automation Controls</div> <div>3000 CAMPUS DRIVE MINNEAPOLIS, MN 55441 1-800-544-7769 (763) 553-7300 (763) 553-0708 fax turck.com</div>			
MATERIAL SEE NOTE	ALL DIMENSIONS DISPLAYED ON THIS DRAWING ARE FOR REFERENCE ONLY CONTACT TURCK FOR MORE INFORMATION	DRFT	GMB	DATE	10/03/89	DESCRIPTION NI10-P18SK-AP6X2	
APVD		SCALE		1=1.0			
FINISH		UNIT OF MEASUREMENT INCH [MILLIMETER]			IDENTIFICATION NO. T4657100		REV A
		DO NOT SCALE THIS DRAWING					
		FILE: T4657100				SHEET 1 OF 1	

A	SEE REVISION DOCUMENT NP18SK	SWC	7/27/93	
REV	DESCRIPTION	BY	DATE	ECO NO.