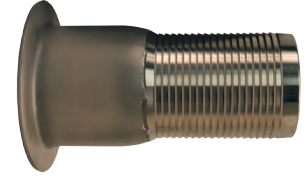


King Turned Back Hose Nipples for Floating Flanges

Features:

- A turned back nipple, when used in a floating flange assembly, allows the flange to be aligned without stressing (twisting) the hose. This generally increases the hose's service life by eliminating a common cause of premature hose failure.
- for use with Lap Joint flanges shown on page 714

Size	Plated Carbon Steel		316 Stainless Steel	
	Part #	Price/E	Part #	Price/E
1"	N10	\$49.30	RN10	\$119.40
1¼"	N15	49.80	RN15	148.30
1½"	N20	78.20	RN20	152.35
2"	N25	84.70	RN25	203.70
2½"	N30	113.30	RN30	381.20
3"	N35	98.15	RN35	311.50
4"	N40	156.50	RN40	457.60
6"	N60	254.00	RN60	916.70
8"	N80	375.00	RN80	1485.00
10"	N100	630.00	RN100	POR
12"	N120	1035.00	RN120	POR



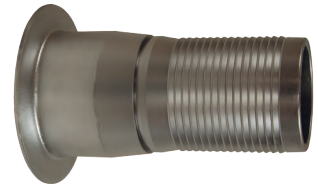
King Crimp Nipples for Floating Flanges

2014
NEW

Feature:

- to be used with King Crimp sleeves and/or ferrules

Size	Plated Carbon Steel		316 Stainless Steel	
	Part #	Price/E	Part #	Price/E
1"	N25CS	\$134.85	RN25CS	\$225.00
1¼"	N35CS	189.35	RN35CS	340.55
1½"	N40CS	244.20	RN40CS	457.60
2"	N60CS	496.55	RN60CS	1115.00



King Turned Back Weld-To-Metal Hose Nipples

Features:

- MSS Type C
- for use with Slip-On and Lap Joint flanges shown on page 714

Size	Length	Phono-Finish Face Schedule 40 Plated Carbon Steel		Phono-Finish Face Schedule 10 304 Stainless Steel		Smooth Face Schedule 10 304 Stainless Steel	
		Part #	Price/E	Part #	Price/E	Part #	Price/E
		¾"	2"	NW5	\$25.55	GNW5	\$32.00
1"	2"	NW10	27.05	GNW10	32.65	GNWP10	20.80
1¼"	2"	NW15	41.15	GNW15	50.00	GNWP15	60.10
1½"	2"	NW20	37.70	GNW20	57.00	GNWP20	22.80
2"	2½"	NW25	40.65	GNW25	70.05	GNWP25	28.15
2½"	2½"	NW30	54.00	GNW30	80.00	GNWP30	35.50
3"	2½"	NW35	58.65	GNW35	88.85	GNWP35	51.50
4"	3"	NW40	76.30	GNW40	108.25	GNWP40	55.50
6"	3½"	NW60	114.60	GNW60	255.00	GNWP60	194.80
8"	4"	NW80	146.65	GNW80	525.00	GNWP80	270.30
10"	5"	NW100	295.00	---	---	GNWP100	500.00
12"	6"	NW120	425.00	---	---	GNWP120	526.30



R