



**READ ALL SAFETY WARNINGS BEFORE PROCEEDING.**

**SAFETY INSTRUCTIONS WARNING:**

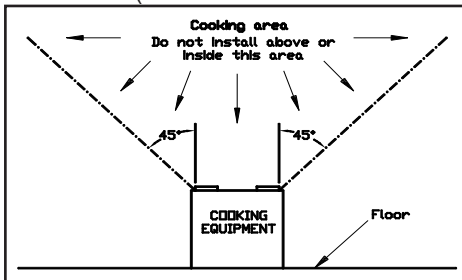
**"WARNING - To Reduce The Risk Of Fire or Electric Shock, Do Not Use This Fan With Any Solid-State Speed Control Device."**

**WARNING - TO REDUCE THE RISK OF FIRE, ELECTRIC SHOCK, OR INJURY TO PERSON, OBSERVE THE FOLLOWING:**

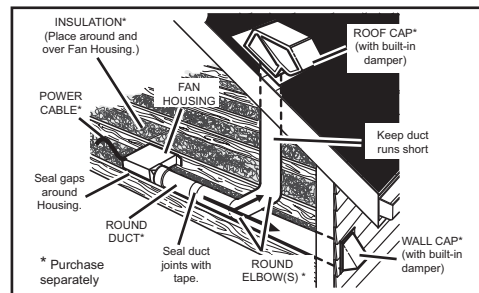
- a) Use this unit only in the manner intended by the manufacturer. If you have questions, contact the manufacturer.
- b) Install fan at least 7 feet (2.1m) above the floor.
- c) Before servicing or cleaning unit, switch power off at service panel and lock the service disconnecting means to prevent power from being switched on accidentally. When the service disconnecting means cannot be locked, securely fasten a prominent warning device, such as a tag, to the service panel.

**WARNING - TO REDUCE THE RISK OF FIRE, ELECTRIC SHOCK, OR INJURY TO PERSON, OBSERVE THE FOLLOWING:**

- a) Installation work and electrical wiring must be done by qualified person(s) in accordance with all applicable codes and standards, including fire-rated construction. Use 120V, 60Hz for electrical supply and properly ground the unit.
- b) Sufficient air is needed for proper combustion and exhausting of gases through the flue (chimney) of fuel burning equipment to prevent back drafting. Follow the heating equipment manufacturer's guideline and safety standards such as those published by the National Fire Protection Association (NFPA), and the American Society for Heating, Refrigeration and Air Conditioning Engineers (ASHRAE), and the local code authorities.
- c) When cutting or drilling into wall or ceiling, do not damage electrical wiring and other hidden utilities.
- d) Ducted fans must always be vented to the outdoors.
- e) If this unit is to be installed over a tub or shower, it must be marked as appropriate for the application and be connected to a GFCI (Ground Fault Circuit Interrupter) - protected branch circuit.



- a) "Do not install fan above or inside a 45-degree angle projected outwards from the cooking equipment element closest to the fan. See instruction sheet for clarification;" or
- b) "Not for use in cooking area - see installation instructions;"



- Recommended to put insulation around and the fan housing to minimize the building heat loss. Seal all the gaps around the housing with caulk or other similar material to inhibit air leakage to the exterior of the thermal envelope of the building. Rigid sheet metal duct and the shortest path to the outside will minimize static pressure losses and promote adequate flow.

**" Do Not Mount In A Ceiling Thermally Insulated To A Value Greater Than R40"**

**"CAUTION - For General Ventilating Use Only. Do Not Use To Exhaust Hazardous Or Explosive Materials And Vapors."**

**WARRANTY OWNER:** Orbit Industries, Inc., warrants to the original consumer purchaser that it's products will be free from defects in materials or workmanship for a period of one year from the date of original consumer purchase.

**THERE ARE NO OTHER WARRANTIES, EXPRESS OR IMPLIED, INCLUDING, BUT NOT LIMITED TO, IMPLIED WARRANTIES OF MERCHANTABILITY OR FITNESS FOR A PARTICULAR PURPOSE.**

During this one year period, Orbit, will at its option, repair or replace, without charge, any products or part which is found to be defective under normal use and service. **THIS WARRANTY DOES NOT EXTEND TO FLUORESCENT LAMP STARTERS OR TUBES, FILTERS, DUCT, ROOF CAPS, and OTHER ACCESSORIES FOR DUCTING.**

This warranty does not cover (a) normal maintenance and service or (b) any products or parts which have been subject to misuse, negligence, accident, improper maintenance of repair (other than by Orbit), faulty installation or installation contrary to recommended installation instructions. The duration of any implied warranty is limited to the one year period as specified for the express warranty. Orbit **OBLIGATION TO REPAIR OR REPLACE, AT Orbit OPTION, LIABLE FOR INCIDENTAL, CONSEQUENTIAL OR SPECIAL DAMAGES ARISING OUT OF OR IN CONNECTION WITH PRODUCT USE OR PERFORMANCE.** Some states do not allow the exclusion or limitation of incidental or consequential damages, so the above limitation or exclusive may not apply to you. This warranty gives you specific legal rights, and you may have other rights, which vary from state to state. This warranty supercedes all prior warranties.

**WARRANTY SERVICE:** To qualify for warranty service, you must (a) notify Orbit at the address stated below, (b) give the model number and part identification and (c) describe the nature of any defect in the product or part. At the time of requesting warranty service, you must present evidence of the original purchase date.

Date of installation: \_\_\_\_\_ Installer: \_\_\_\_\_

Model number \_\_\_\_\_ Product Description: \_\_\_\_\_

Orbit Industries, Inc. 2100 S. Figueroa St. Los Angeles, CA 90007 Tel: (213) 745-8884 Fax: (213) 745-2015 1-800-90-ORBIT

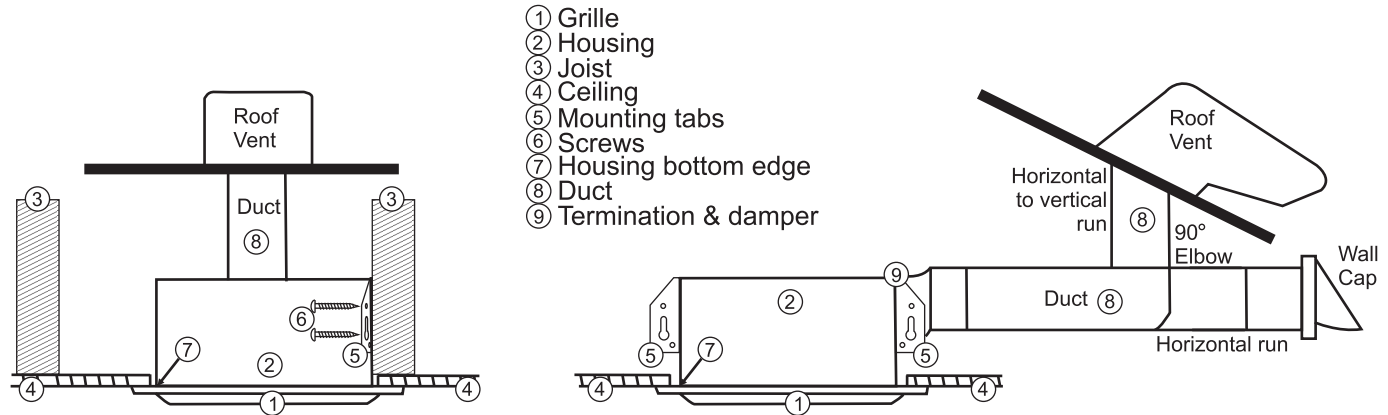


## READ ALL SAFETY WARNINGS BEFORE PROCEEDING.

OSP50 - 3" Termination (duct)  
 Rough Opening: 7-1/2" L X 7-5/16" W X 3-11/16" D

OSP70 - 4" Termination (duct)  
 Rough Opening: 7-1/2" L X 7-5/16" W X 3-11/16" D

**Carefully position fan  
 for shortest duct run and  
 fewest elbows to achieve  
 maximum performance**



### New Construction

1. Remove grille from housing before installation.
2. Locate housing between ceiling joists or truss so bottom flange will fit flush to the finished ceiling.
3. Loosely screw to joist through the mounting tab KEYHOLE slots (screws not provided).
4. Confirm housing allowance for ceiling finished thickness then tighten keyhole screw. Note: housing must be flush with the finished ceiling for the grille to fit properly.
5. Add a screw in the hole above the keyhole slot, confirm fit and tighten all screws.

### Existing Construction

1. For new fan installation position the housing in the attic next to the ceiling joist or truss.
2. Trace housing bottom edge on ceiling material for cutout.
3. Confirm the opening, then cut hole 1/16" larger than the housing edge all around.
4. Place housing in the opening with allowance so bottom edge will fit flush to the finished ceiling.
5. To attach follow steps 3, 4, 5 for New Construction.

### DUCTING Always vent to the outdoors.

1. NEVER USE SCREWS to connect duct to termination - USE TAPE ONLY making sure to not obstruct damper.
2. Termination duct pipe must exhaust outside the home.
3. Rigid sheet metal duct and the shortest path to the outside is recommended.

### MAINTENANCE

#### WARNING: Disconnect power before servicing.

NOTE: Never use gas, thinners or any other chemicals for cleaning the ventilating fan.

1. Never allow water to get into the motor.
2. Never immerse plastic parts in hot water over 150° F.

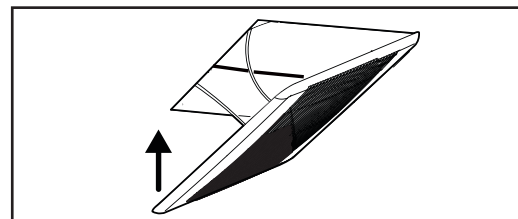
Routine maintenance should be done every year.

1. Remove wash and clean the grill.
2. Using a soft cloth dampened with mild detergent, remove any dirt from the unit then wipe to dry.
3. After cleaning, reassemble correctly.

### INSTALL GRILLE

#### Model OSP50 OSP70

Install ceiling material to complete the ceiling construction. Then cut the opening around the fan housing. To attach the grille assembly to the fan housing, pinch the grille springs on the sides of the grille assembly and position the grille into the housing with the grille springs in the appropriate slots. Push the grille assembly towards the ceiling to secure.





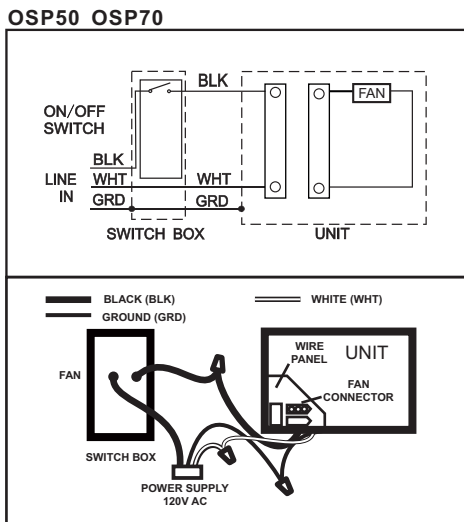
# INSTALLATION INSTRUCTIONS

**READ ALL SAFETY WARNINGS BEFORE PROCEEDING.**

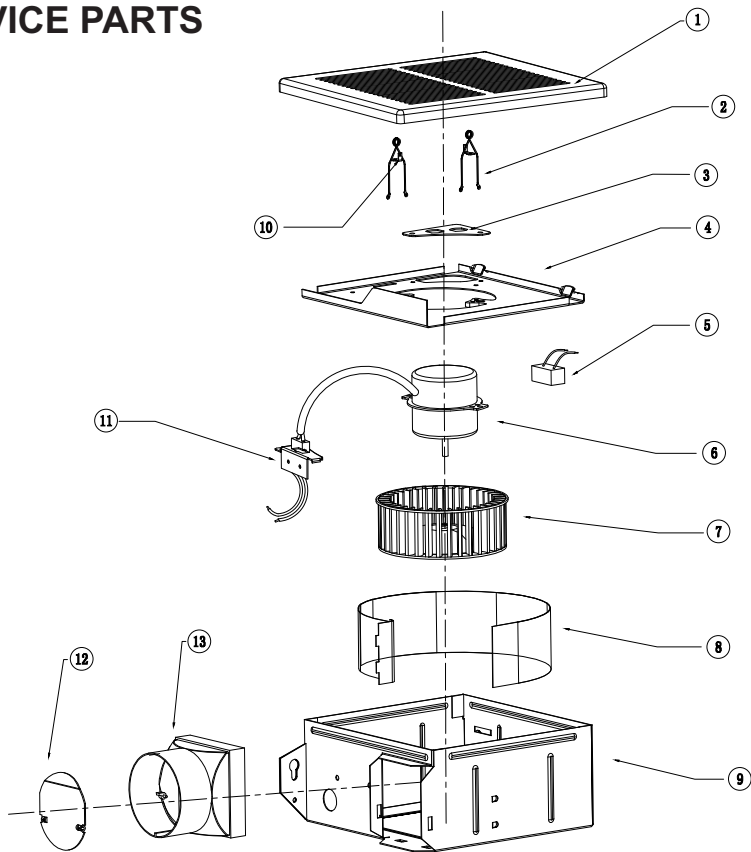
**WIRING: Power must be disconnected during installation.**

1. Run electrical as directly as possible from the wall switch to the unit.
2. Using approved connectors, connect cables wires according to the model and diagram below to the junction box.
3. Do not allow cable to touch side of unit after installation.

## WIRING DIAGRAMS:



## SERVICE PARTS



No.	Name of Parts	Quantity
1	Panel	1pcs
2	Spring	2pcs
3	Capacitor Plate	1pcs
4	Install Panel	1pcs
5	capacitor	1pcs
6	Motor	1pcs
7	Impeller	1pcs
8	Housing Shroud	1pcs
9	Housing	1pcs
10	Spring Fastener	2pcs
11	Patch Board	1pcs
12	Damper	1pcs
13	Duct Connector	1pcs

